



STARPAD SE7071TC - 15/100W

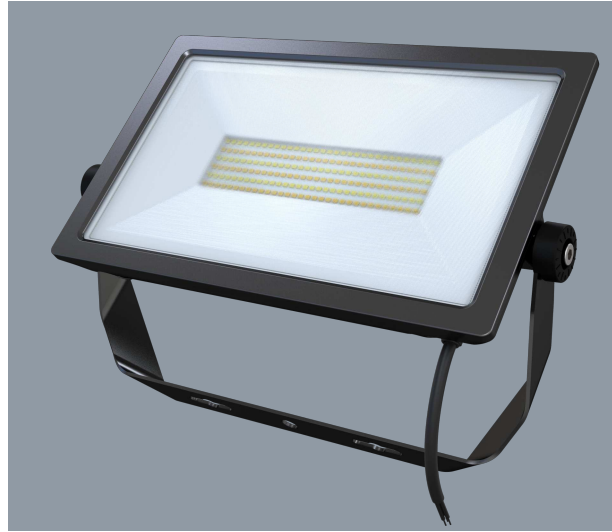
15-100 watt IP65 LED floodlight with integral selectable colour temperature

Application

A versatile floodlight solution for residential and commercial exterior spaces

Design Specifications

- Robust die-cast aluminium body, IK 07 rated
- Durable black, silver or white powder coated finish
- Textured tempered glass front cover
- High efficiency SMD LED chips, non-dimmable LED driver, CRI > 80, CCT selectable 3000, 4000 or 5000K
- High performance aluminium reflector, beam distribution 100 degree
- Nickel plated copper cable gland with 600 mm 3 core rubber flex (15-30 watt models), 800mm for (50-100 watt models)



-
-
-
-
-
-
-
-
-
-

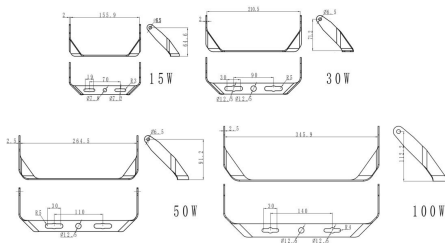
Technical Specification

Model No.	Input Voltage (V/AC)	Power (W)	Lumens (lm)	CCT (K)	CRI	Beam Angle (°)
SE7071/15TC/WH	240	15	1275/1500/1350	3000/4000/5000	80	100
SE7071/15TC/SL	240	15	1275/1500/1350	3000/4000/5000	80	100
SE7071/15TC/BK	240	15	1275/1500/1350	3000/4000/5000	80	100
SE7071/30TC/WH	240	30	2550/3000/2700	3000/4000/5000	80	100
SE7071/30TC/SL	240	30	2550/3000/2700	3000/4000/5000	80	100
SE7071/30TC/BK	240	30	2550/3000/2700	3000/4000/5000	80	100
SE7071/50TC/WH	240	50	4250/5000/4500	3000/4000/5000	80	100
SE7071/50TC/SL	240	50	4250/5000/4500	3000/4000/5000	80	100
SE7071/50TC/BK	240	50	4250/5000/4500	3000/4000/5000	80	100
SE7071/100TC/WH	240	100	8500/10000/9000	3000/4000/5000	80	100
SE7071/100TC/SL	240	100	8500/10000/9000	3000/4000/5000	80	100
SE7071/100TC/BK	240	100	8500/10000/9000	3000/4000/5000	80	100

Model No.	Body Colour	Dim (mm)	Mass (kg)
SE7071/15TC/WH	WHITE	153(L) x 153(W) x 33(H)	0.6
SE7071/15TC/SL	SILVER	153(L) x 153(W) x 33(H)	0.6
SE7071/15TC/BK	BLACK	153(L) x 153(W) x 33(H)	0.6
SE7071/30TC/WH	WHITE	204(L) x 36(W) x 207(H)	1
SE7071/30TC/SL	SILVER	204(L) x 36(W) x 207(H)	1
SE7071/30TC/BK	BLACK	204(L) x 36(W) x 207(H)	1
SE7071/50TC/WH	WHITE	246(L) x 261(W) x 39(H)	1.5
SE7071/50TC/SL	SILVER	246(L) x 39(W) x 261(H)	1.5
SE7071/50TC/BK	BLACK	246(L) x 39(W) x 261(H)	1.5
SE7071/100TC/WH	WHITE	290(L) x 40(W) x 342(H)	2.6
SE7071/100TC/SL	SILVER	290(L) x 40(W) x 342(H)	2.6
SE7071/100TC/BK	BLACK	290(L) x 40(W) x 342(H)	2.6

Due to continued product and technology enhancements, data sourced from sal.net.au shall not form part of any contract and or technical performance guarantee unless expressly confirmed in writing by SAL at the time of order. Products are sold in accordance with SAL Terms and Conditions of sale and all images shown are for illustration purposes only and may vary from the actual colour or finish. Unless specifically stated, all IP ratings nominated for Interior products are from "below the ceiling".

Dimensions

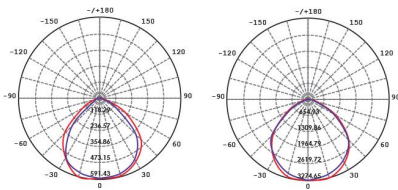


Photometric Data

Unit: cd C0/C180 — C90/C270

SE7171/15TC/WH at 3000K

SE7171/100TC/WH at 3000K



POWERSTAR SE7100/600 - 600W



Before selecting a floodlight look out for the marks of Compliance and Safety. Starting with the RCM mark, this signals that the product has been tested to all relevant Australian Safety standards, to ensure the product delivers its designed safety performance.

In addition look out for limits in aiming orientation to ensure the floodlight operates within its design limits and to ensure the product is suitable for such an application.

Need more information on AS/NZS 60598 safety and compliance?

Check out the SAL web FAQ's or speak to your local SAL team member.

For related
products
please
scan me

