

100C23EJ10

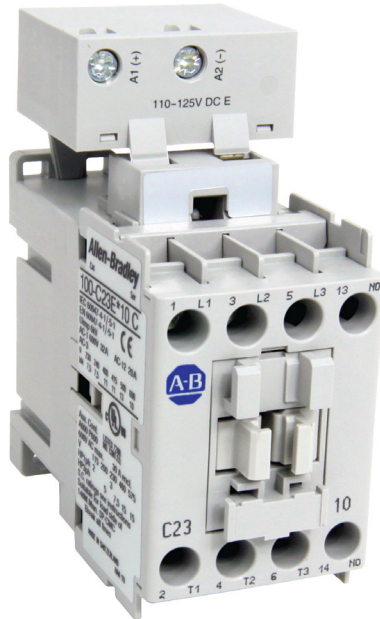
Allen-Bradley 100C Contactor 11kW 3Pole 24VDC Coil 1NO
Contact Auxiliary



Allen-Bradley

by ROCKWELL AUTOMATION

CONTACTORS



Component type	Power contactor, AC switching
Range	100C
Model	N/A
Product status	Existing

The Allen-Bradley 100-C contactor line offers compact, high-performance design in 9 to 97 A contactors. These energy efficient contactors are designed to control motors and other loads. Straightforward wiring and installation process ensure quick and easy setup, reducing downtime and increasing productivity.

ELECTRICAL

Number of normally open contacts as main contact	3.0
Number of normally closed contacts as main contact	0.0
Rated operation current I_e at AC-3, 400 V	23.0 A
Rated operation power at AC-3, 400 V	11.0 kW
Rated operation current I_e at AC-1, 400 V	32.0 A
Max. rated operation voltage U_e AC	690.0 V
Voltage type for actuating	DC
Control supply voltage U_s at DC	24.0 V
Number of auxiliary contacts as normally open contact	1.0
Number of auxiliary contacts as normally closed contact	0.0
Rated operation current I_e at AC-3, 690 V	12.0 A
Rated operation power at AC-3, 690 V	10.0 kW
Rated operation power at AC-4, 400 V	4.0 kW
Power consumption, DC coil pickup	10.0 W
Power consumption, DC coil hold-in	1.7 W
Type of electrical connection of main circuit	Screw connection
Rated operation current I_e at AC-4, 400 V	9.0 A

CONSTRUCTION

Degree of protection (IP)	IP20
Mounting method	DIN-rail/screw

DIMENSIONS

Height	81.0 mm
Width	45.0 mm
Depth	86.5 mm
Weight	0.4 kg