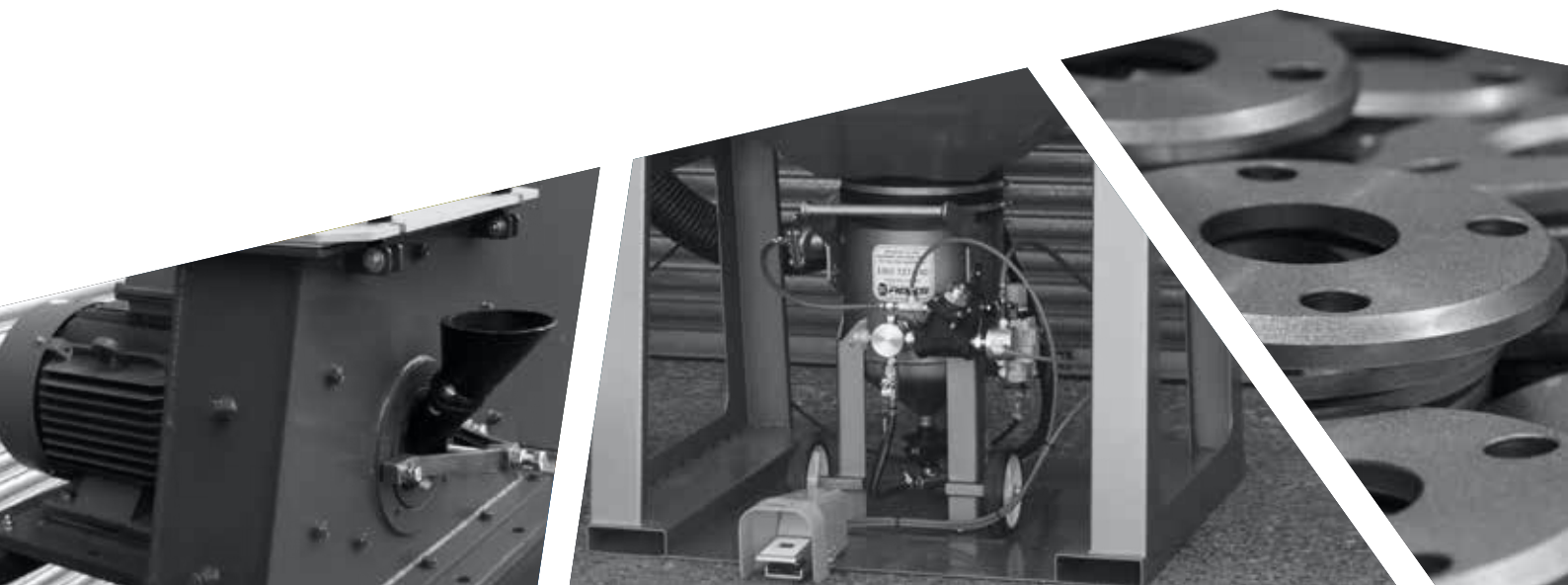


**ABRASIVE BLASTING SERVICE AND SUPPLIES (ABSS) PTY LTD**

# CATALOGUE

ABRASIVE BLASTING EQUIPMENT AND ACCESSORIES

2020 EDITION





**ABRASIVE BLASTING SERVICE AND SUPPLIES (ABSS) PTY LTD**

### **OUR VISION**

To be established as the Premier Choice Supplier for Products and Engineering Solutions to the Abrasive Blasting and Shot Peening Industries.

### **OUR MISSION**

We are committed to assisting our customers with their requirements by providing them with a Comprehensive, Economical and Engineered Solution.

We are committed to providing a safe and pleasant work environment.

Through our Global Partner Network, we will continue to provide the best Equipment and Solutions available in the World today.



---

#### **MELBOURNE HEAD OFFICE**

18 Beckett Avenue, Keilor East VIC 3033  
PH: (03) 9336 1961  
Fax: (03) 9331 6223  
Free Call 1300 727 240

#### **SYDNEY**

Unit 27, 274-276 Hoxton Park Road  
Prestons NSW 2170  
PH: (02) 9607 9953

[www.abss.net.au](http://www.abss.net.au)

# TABLE OF CONTENTS

<b>4</b>	<b>ABRASIVE BLAST VESSELS</b>	<b>49</b>	<b>BULK STORAGE BLAST VESSELS</b>
5	ABSS Blast Pot Packages	53	Bulk Storage Vessel Accessories
8	Blast Pot Easy Selection Guide		
10	Specialty Blast Pot Packages	55	Air Preparation Pre-Filter System
11	Performance Blast Pot Range		
19	Soda Blasting Equipment	<b>56</b>	<b>ABRASIVE BLAST CABINETS</b>
20	Blast Pot Spare Parts and Air Control Valves	56	Blast Cabinet Easy Selection Guide
		58	Abrasive Suction Blast Cabinets
<b>24</b>	<b>OPERATOR CONTROLS</b>	63	Suction Blast Cabinet Optional Upgrades
24	Deadman Handles and Hose	64	Abrasive Pressure Blast Cabinets
25	Electric Deadman	69	Pressure Blast Cabinet Optional Upgrades
27	Electric Deadman Conversion Kit	70	Optional Upgrades and Accessories
		75	Replacement Parts
28	Abrasive Feed Valves	<b>77</b>	<b>WET BLASTING EQUIPMENT</b>
29	Blast Lights	77	Graco EcoQuip Vapor Blast Systems
<b>30</b>	<b>SPECIALTY APPLICATION</b>	82	Moisture Separators
30	Internal Pipe Blasters		
		83	Special Gauges
<b>32</b>	<b>STANDARD BLAST NOZZLES</b>		
		84	Wagner Air Spray Equipment
<b>33</b>	<b>SPECIAL BLAST NOZZLES</b>		
		86	Carlisle Fluid Technologies
<b>34</b>	<b>HOSE AND FITTINGS</b>		
34	Couplings and Nozzle Holders	88	Graco Air Spray Equipment
37	Coupling Accessories		
37	Nylon Nozzle and Coupling Guide	90	Abrasive Media
38	ABSS Premium Blast Hose	92	Abrasive Blast Rooms
39	Compressed Air "Bull" Hose	96	Turbine Wheel Machines
40	Hose and Fittings	102	Dust Collection
<b>42</b>	<b>OPERATOR SAFETY</b>	106	Magnetic Heat (Flameless)
42	Nova 2000 Blast Helmet		
43	Nova 2000 Blast Helmet Components	107	Technical Information
44	Nova 3 Blast Helmet		
45	Nova 3 Blast Helmet Components		
46	Blast Helmet Replacement Lenses		
47	Breathing Filtration		
48	Safety Equipment		

# ABRASIVE BLAST VESSELS

## ABSS BLAST VESSEL FEATURES

150 PSI RATED BLAST POTS  
FULLY COMPLIANT TO AUSTRALIAN STANDARDS AS1210

- High Quality Finish in ABSS Green Hammertone
- Heavy Duty Lifting Lugs on Models ABS174 and larger
- Quality Pneumatics fitted to all Models
- Moisture Separators fitted to Models ABS20 and above
- Lid and Screen Sets on all Models
- 1¼" BSP Piping on Performance Blast Pots ABS80 and above to accommodate #6, ¾" Blast Nozzles
- 1½" BSP Piping on Hi-Flow Blast Pots to accommodate #8, ½" Blast Nozzles
- Heavy Duty Steel Frame, Sturdy Wheels and Forklift Pockets (Model ABS80 and above)
- Simple Pneumatic Deadman Valving on all Pressure Hold and Automatic Exhaust ABSS Blast Pots
- Micro Abrasive Feed Valves fitted to Performance Blast Pots ABS40 and above
- Pressure Hold Valves fitted to all Hi-Flow Blast Pots



ABSS 174 Litre Blast Pot Model ABS174



FOR FURTHER DETAILS PLEASE CONTACT US ON 1300 727 240

## ABSS BLAST POT PACKAGES

### PACKAGE A

- Abrasive Feed Valve
- Moisture Separator
- Lid and Screen
- Pneumatic Deadman Controls, Hose and Handle
- Pneumatic Deadman Valving
- Pneumatic Deadman Handle and Hose
- Tri-Clover Quick Release Fitting



### PACKAGE B

- Abrasive Feed Valve
- Moisture Separator
- Lid and Screen
- Pneumatic Deadman Controls, Hose and Handle
- DuraBLast Hose
- Pneumatic Deadman Valving
- Pneumatic Deadman Handle and Hose
- Tri-Clover Quick Release Fitting

#### INCLUDES:

- [ABSS DuraBlast Fitted Blast Hose](#)
- [Blast Nozzle](#)



### PACKAGE C

- Abrasive Feed Valve
- Moisture Separator
- Lid and Screen
- Pneumatic Deadman Controls, Hose and Handle
- DuraBLast Hose
- Pneumatic Deadman Valving
- Pneumatic Deadman Handle and Hose
- Tri-Clover Quick Release Fitting

#### INCLUDES:

- [ABSS DuraBlast Fitted Blast Hose](#)
- [Blast Nozzle](#)
- [Breathing Filter Kit](#)
- [Blast Helmet and Fitted Breathing Hose Assembly](#)



Do you have a unique requirement? Contact us now and speak with our experienced Engineers

# BLAST POT PACKAGES

Type	Model	Capacity	Package A	Package B	Package C
"Auto Exhaust" PERFORMANCE Blast Pots	ABS7	7L	4A-A201417	4A-A202322	4A-A210094
	ABS20	20L	4A-A201235	4A-A202323	4A-A201244
	ABS40	40L	4A-A201236	4A-A202324	4A-A201245
	ABS80	80L	4A-A202274	4A-A202325	4A-A202275
	ABS100	100L	4A-A201253	4A-A202328	4A-A201257
	ABS140	140L	4A-A202279	4A-A202326	4A-A202289
	ABS174	174L	4A-A201240	4A-A202327	4A-A201249
	ABS185	185L	4A-A201255	4A-A202329	4A-A201259
Pressure Hold Blast Pot (uses Pressure Hold Valve)	ABS100PH	100L	4A-A201254	4A-A202343	4A-A201258
	ABS140PH	140L	4A-A201239	4A-A202341	4A-A201248
	ABS174PH	174L	4A-A201241	4A-A202342	4A-A201250
	ABS185PH	185L	4A-A201256	4A-A202344	4A-A201260
Hi-Flow Blast Pot (uses Auto Exhaust System - Micro Valve with 1½" piping)	ABS174HF	174L	4A-A201263	4A-A202340	4A-A201269
Hi-Flow/ Pressure Hold Blast Pots (uses Thompson II Valve with 1½" piping)	ABS140HF - Hi-FL/PH	140L	4A-201262	4A-A202245	4A-A201268
	ABS170HF - Hi-FL/PH	174L	4A-A201264	4A-A202246	4A-A201270
"S" Series Pot	ABS174S	174L	4A-A202396	4A-A202397	4A-A202398
Soda Blast Pot	4A-MSM35TVPR	80KG	4A-A202330	4A-A202331	4A-A202332

Type	Model	Capacity	Product No.
Bulk Blast Pot (Mini) - 2 Outlets	MB45 For Lift Pockets	1275L	4A-A201898
Bulk Blast Pot (Skid Mounted) - 4 Outlets	MB100 Skid Mounted	2800L	4A-A201273
Bulk Blast Pot (Skid Mounted) - 6 Outlets	MB160 Skid Mounted	4500L	4A-A201275
Bulk Blast Pot (Trailer Mounted) - 4 Outlets	MB100 Trailer Mounted	2800L	4A-A201274
Bulk Blast Pot (Trailer Mounted) - 6 Outlets	MB160 Trailer Mounted	4500L	4A-A201276
20L Pressure Blast Conversion Kit			1B-A201127

# DO YOU NEED A CUSTOM SOLUTION?

**At ABSS, we pride ourselves on delivering to our Customers the Best Solution the First time.**

If you have a specific requirement such as a Corporate Colour you would like your ABSS Product Finished in, we can accommodate this.

*Contact us today for further details*



**Just Another Benefit when Choosing  
ABSS Blast Equipment**

# BLAST POT EASY SELECTION GUIDE

Description	Performance Blast Pots					
	ABS7	ABS20	ABS40	ABS80	ABS140	ABS174
<b>ABSS Model</b>						
Volume (Litres)	7	20	40	80	140	174
Garnet Capacity (kg)	16	45	90	180	320	400
Dimensions - Height (mm)	890	575	880	1010	1310	1320
Dimensions - Diameter (mm)	150	290	290	508	508	610
Piping Diameter (mm)	15	15	25	32	32	32
Mini Micro Valve	✓	✓				
Micro Feed Valve 1¼" (32 NB)			✓	✓	✓	✓
Micro Feed Valve 1½" (40 NB)						
Small Urethane Pop Up Valve	✓	✓	✓			
Large Urethane Pop Up Valve				✓	✓	✓
Lid and Screen Set		✓	✓	✓	✓	
Moisture Separator (mm)		15	25	40	40	40
Blast helmet - Nova 2000	✓	✓	✓	✓	✓	✓
Blast helmet Air Supply Hose	✓	10m	10m	20m	20m	20m
Blast Hose Standard ½" (12.5mm) x 27mm OD	5m	10m				
Blast Hose Standard ¾" (20mm) x 34mm OD			10m			
Blast Hose Standard 1" (25mm) x 40mm OD				20m		
Blast Hose Standard 1¼" (32mm) x 48mm OD					20m	20m
<b>Upgrades Available</b>						
<b>ABSS Model</b>	<b>ABS7</b>	<b>ABS20</b>	<b>ABS40</b>	<b>ABS80</b>	<b>ABS140</b>	<b>ABS174</b>
Series II Pressure Hold Abrasive Valve					✓	✓
Pressure Hold System					✓	✓
Electric Deadman System					✓	✓
Breathing Air System - 2 Operator	✓	✓	✓	✓	✓	✓
Breathing Air System - 4 Operator	✓	✓	✓	✓	✓	✓
Helmet Cool-Air Tube or Heating Tube	✓	✓	✓	✓	✓	✓
Blast Hose - Heavy Wall		✓		✓	✓	✓
Recommended Blast Nozzle Size	No. 2	No. 3	No. 4	No. 5	No. 6	No. 7



Description	US Blast Pots		Hi-Flow Blast Pots	
	ABS100	ABS185	ABS140HF	ABS174HF
<b>ABSS Model</b>				
Volume (Litres)	100	185	140	174
Garnet Capacity (kg)	230	420	320	400
Dimensions - Height (mm)	1320	1335	1310	1320
Dimensions - Diameter (mm)	610	762	508	610
Piping Diameter	32	32	40	40
Mini Micro Valve				
Micro Feed Valve 1¼" (32mm)	✓	✓		
Micro Feed Valve 1½" (38mm)			✓	✓
Small Urethane Pop Up Valve				
Large Urethane Pop Up Valve	✓	✓	✓	✓
Lid and Screen Set	✓	✓	✓	✓
Moisture Separator (mm)	40	40	40	40
Blast helmet - Nova 2000	✓	✓	✓	✓
Blast helmet Air Supply Host	20m	20m	20m	20m
Blast Hose Standard 1" (25mm) x 40mm OD				
Blast Hose Standard 1¼" (32mm) x 48mm OD	20m	20m		
Blast Hose Standard 1½" (38mm) x 55mm OD			20m	20m
<b>Upgrades Available</b>				
<b>ABSS Model</b>	<b>ABS100</b>	<b>ABS185</b>	<b>ABS140HF</b>	<b>ABS174HF</b>
Series II Pressure Hold Abrasive Valve	✓	✓	✓	✓
Pressure Hold System	✓	✓	✓	✓
Electric Deadman System	✓	✓	✓	✓
Breathing Air System - 2 Operator	✓	✓	✓	✓
Breathing Air System - 4 Operator	✓	✓	✓	✓
Helmet Cool-Air Tube or Heating Tube	✓	✓	✓	✓
Blast Hose - Heavy Wall	✓	✓	✓	✓
Recommended Blast Nozzle Size	No. 5	No. 6	No. 8	No. 8

## SPECIALTY BLAST POT PACKAGES

---

### DO YOU REQUIRE A PRESSURE HOLD VESSEL OR A 1½" PIPED BLAST VESSEL?

ABSS Manufacture a range of Pressure Hold Blast Vessel as well as the Hi-Flow range of large piped 1½" Blast Vessels.

See Chart on page 9 for available Standard Configurations.

All ABSS Blast Vessels comply to Australian Standards AS1210.

[Contact Us Now for Further Information.](#)

### ABSS BLAST VESSEL TERMINOLOGY EXPLAINED

#### *"Auto Exhaust"*

Utilises an Automatic Exhaust Valve which releases the Compressed Air from the Blast Vessel when the Deadman Handle is released. Standard Piping is used with the Abrasive Feed Valve.

#### *"Pressure Hold"*

Utilises a Series II Pressure Hold Metering Valve which allows for the Blast Vessel to hold its pressure when the Deadman Handle is released. The pressure in the Blast Vessel is released manually using a Ball Valve. Standard Piping is used with the Series II Pressure Hold Metering Valve.

#### *"Hi-Flow Auto Exhaust"*

The same as "Auto Exhaust", however 1½" Piping is used to maintain a Higher Flow of Compressed Air, allowing for larger Blast Nozzles of up to #8 (½") to be used.

#### *"Hi-Flow Pressure Hold"*

The same as "Pressure Hold" however 1½" Piping is used to maintain a Higher Flow of Compressed Air, allowing for larger Blast Nozzles of up to #8 (½") to be used.



# ABRASIVE BLAST VESSELS

## PERFORMANCE BLAST POTS

### 7 LITRE PERFORMANCE ABRASIVE BLAST POT

#### Model ABS7 "Auto Exhaust" PERFORMANCE Blast Pot

<b>Pot Capacity</b>	7L (0.25 ft <sup>3</sup> )
<b>Pot Diameter</b>	150mm
<b>Pot Height</b>	890mm
<b>Piping Diameter</b>	15mm (½")
<b>Hose Length</b>	5m
<b>Garnet Capacity</b>	16kg
<b>Maximum Operating Pressure</b>	125 psi (8.6 BAR) Automatic Exhaust Valve Operation

#### Blast Pot Packages

Item/Component	A	B	C
Mini Micro Abrasive Feed Valve	✓	✓	✓
½" BSP Piping String	✓	✓	✓
Hopper and Perforated Screen	✓	✓	✓
Pneumatic Deadman Controls, Hose and Handle	✓	✓	✓
5m - 13mm x 27mm DuraBlast Hose		✓	✓
AT2 - 1/8" (3.2mm) Tungsten Carbide Blast Nozzle and Nozzle Holder		✓	✓
Hose Coupling		✓	✓
Blast Helmet			✓
Breathing Filter Kit with Breathing Hose			✓



## 20 LITRE PERFORMANCE ABRASIVE BLAST POT

### Model ABS20 "Auto Exhaust" PERFORMANCE Blast Pot

<b>Pot Capacity</b>	20L (0.7 ft <sup>3</sup> )
<b>Pot Diameter</b>	292mm
<b>Pot Height</b>	590mm
<b>Piping Diameter</b>	15mm (½")
<b>Hose Length</b>	10m
<b>Garnet Capacity</b>	45kg
<b>Maximum Operating Pressure</b>	125 psi (8.6 BAR) Automatic Exhaust Valve Operation

Made in Australia  
Complies with Australian Standards AS1210

### Blast Pot Packages

Item/Component	A	B	C
Mini Micro Abrasive Feed Valve	✓	✓	✓
½" (12mm) Filter Regulator	✓	✓	✓
Lid and Screen	✓	✓	✓
Pneumatic Deadman Controls, Hose and Handle	✓	✓	✓
10m - 13mm x 27mm DuraBlast Hose		✓	✓
AT3 ⅜" (4.8mm) Venturi Blast Nozzle		✓	✓
Blast Helmet			✓
Breathing Filter Kit			✓
12m Fitted Breathing Hose			✓



FOR FURTHER DETAILS PLEASE CONTACT US ON 1300 727 240

## 40 LITRE PERFORMANCE ABRASIVE BLAST POT

### Model ABS40 "Auto Exhaust" PERFORMANCE Blast Pot

**Pot Capacity** 40L (1.4 ft<sup>3</sup>)

**Pot Diameter** 292mm

**Pot Height** 890mm

**Piping Diameter** 25mm (1")

**Hose Length** 10m

**Garnet Capacity** 90kg

**Maximum Operating Pressure** 125 psi (8.6 BAR)  
Automatic Exhaust Valve Operation

Made in Australia  
Complies with Australian Standards AS1210

### Blast Pot Packages

Item/Component	A	B	C
1¼" (32mm) Micro Abrasive Feed Valve	✓	✓	✓
½" (12mm) Filter Regulator	✓	✓	✓
Lid and Screen	✓	✓	✓
Pneumatic Deadman Controls, Hose and Handle	✓	✓	✓
10m - 19mm x 34mm DuraBlast Hose		✓	✓
ATW4 ¼" (6.4mm) Venturi Blast Nozzle		✓	✓
Blast Helmet			✓
Breathing Filter Kit			✓
12m Fitted Breathing Hose			✓



## 80 LITRE PERFORMANCE ABRASIVE BLAST POT

### Model ABS80 "Auto Exhaust" PERFORMANCE Blast Pot

**Pot Capacity** 80 Litres (2.8 ft<sup>3</sup>)

**Pot Diameter** 514 mm

**Pot Height** 1010 mm

**Piping Diameter** 32 mm (1¼")

**Hose Length** 20m

**Garnet Capacity** 180 kg

**Maximum Operating Pressure** 150 psi (10 BAR)  
Automatic Exhaust Valve Operation

Made in Australia  
Complies with Australian Standards AS1210

### Blast Pot Packages

Item/Component	A	B	C
1¼" (32mm) Micro Abrasive Feed Valve	✓	✓	✓
1½" BSP (40mm) Moisture Separator	✓	✓	✓
Lid and Screen	✓	✓	✓
Pneumatic Deadman Controls, Hose and Handle	✓	✓	✓
20m - 25mm x 40mm DuraBlast Hose		✓	✓
ATW5 5/16" (8mm) Venturi Blast Nozzle		✓	✓
Blast Helmet			✓
Breathing Filter Kit			✓
22m Fitted Breathing Hose			✓



## 100 LITRE PERFORMANCE ABRASIVE BLAST POT

### Model ABS100 "Auto Exhaust" PERFORMANCE Blast Pot

**Pot Capacity** 100 litres (3.5 ft<sup>3</sup>)

**Pot Diameter** 450 mm

**Pot Height** 1245 mm

**Piping Diameter** 32 mm (1¼")

**Hose Length** 20m

**Garnet Capacity** 230 kg

**Maximum Operating Pressure** 150 psi (10 BAR)  
Automatic Exhaust Valve Operation

Made in USA  
Complies with Australian Standards AS1210

### Blast Pot Packages

Item/Component	A	B	C
1¼" (32mm) Micro Abrasive Feed Valve	✓	✓	✓
1½" BSP (40mm) Moisture Separator	✓	✓	✓
Lid and Screen	✓	✓	✓
Pneumatic Deadman Controls, Hose and Handle	✓	✓	✓
20m - 32mm x 48mm DuraBlast Hose		✓	✓
ATW5 ⅝" (8mm) Venturi Blast Nozzle		✓	✓
Blast Helmet			✓
Breathing Filter Kit			✓
22m Fitted Breathing Hose			✓



## 140 LITRE PERFORMANCE ABRASIVE BLAST POT

### Model ABS140 "Auto Exhaust" PERFORMANCE Blast Pot

**Pot Capacity** 140 litres (5 ft<sup>3</sup>)

**Pot Diameter** 514 mm

**Pot Height** 1310 mm

**Piping Diameter** 32 mm (1¼")

**Hose Length** 20m

**Garnet Capacity** 320 kg

**Maximum Operating Pressure** 150 psi (10 BAR)  
Automatic Exhaust Valve Operation

Made in Australia  
Complies with Australian Standards AS1210

### Blast Pot Packages

Item/Component	A	B	C
1¼" (32mm) Micro Abrasive Feed Valve	✓	✓	✓
1½" BSP (40mm) Moisture Separator	✓	✓	✓
Lid and Screen	✓	✓	✓
Pneumatic Deadman Controls, Hose and Handle	✓	✓	✓
20m - 32mm x 48mm DuraBlast Hose		✓	✓
ATW6 ¾" (9.5mm) Venturi Blast Nozzle		✓	✓
Blast Helmet			✓
Breathing Filter Kit			✓
22m Fitted Breathing Hose			✓





## 174 LITRE PERFORMANCE ABRASIVE BLAST POT

### Model ABS174 "Auto Exhaust" PERFORMANCE Blast Pot

**Pot Capacity** 174 litres (6 ft<sup>3</sup>)

**Pot Diameter** 622 mm

**Pot Height** 1370 mm

**Piping Diameter** 32 mm (1¼")

**Hose Length** 20m

**Garnet Capacity** 400 kg

**Maximum Operating Pressure** 150 psi (10 BAR)  
Automatic Exhaust Valve Operation

Made in Australia  
Complies with Australian Standards AS1210

### Blast Pot Packages

Item/Component	A	B	C
1¼" (32mm) Micro Abrasive Feed Valve	✓	✓	✓
1½" BSP (40mm) Moisture Separator	✓	✓	✓
Lid and Screen	✓	✓	✓
Pneumatic Deadman Controls, Hose and Handle	✓	✓	✓
20m - 32mm x 48mm DuraBlast Hose		✓	✓
ATW6 ¾" (9.5mm) Venturi Blast Nozzle		✓	✓
Blast Helmet			✓
Breathing Filter Kit			✓
22m Fitted Breathing Hose			✓



## 185 LITRE PERFORMANCE ABRASIVE BLAST POT

### Model ABS185 "Auto Exhaust" PERFORMANCE Blast Pot

**Pot Capacity** 185 litres (6.5 ft<sup>3</sup>)

**Pot Diameter** 610 mm

**Pot Height** 1370 mm

**Piping Diameter** 32 mm (1¼")

**Hose Length** 20m

**Garnet Capacity** 420 kg

**Maximum Operating Pressure** 150 psi (10 BAR)  
Automatic Exhaust Valve Operation

Made in USA  
Complies with Australian Standards AS1210

### Blast Pot Packages

Item/Component	A	B	C
1¼" (32mm) Micro Abrasive Feed Valve	✓	✓	✓
1½" BSP (40mm) Moisture Separator	✓	✓	✓
Lid and Screen	✓	✓	✓
Pneumatic Deadman Controls, Hose and Handle	✓	✓	✓
20m - 32mm x 48mm DuraBlast Hose		✓	✓
ATW6 ⅝" (9.5mm) Venturi Blast Nozzle		✓	✓
Blast Helmet			✓
Breathing Filter Kit			✓
22m Fitted Breathing Hose			✓



FOR FURTHER DETAILS PLEASE CONTACT US ON 1300 727 240

# SODA BLASTING EQUIPMENT

## SODA BLAST MACHINES

### MOD-U-BLAST® SODA BLAST SYSTEM

#### 4A-MSM35TVPR

**Capacity** 3.5ft<sup>3</sup> (105L)

**Soda Capacity** 80kg

**Pot Diameter** 533mm

**Pot Height** 1400mm

Pneumatic Deadman Fitted as Standard  
Upgradeable to Electric Deadman

Australian Standards AS1210, CRN Registered,  
National Board Certified, U-Stamped (ASME),  
A-Stamped (Alberta)

System Includes:

- 20m Fitted Blast Hose
- Water Induction Blast Nozzle
- Remote Deadman System with Blowdown Silencer
- 20m Fitted Water Line
- Pneumatic Vibrator
- Moisture Separator



MADE IN THE USA

# BLAST POT SPARE PARTS

## TRI-CLOVER CLAMP ASSEMBLIES

The quick and easy way to disconnect and remove your Abrasive Feed Valve from the Blast Vessel.

304 Grade Stainless Steel Ferrules and Clamp

4I-A201159 Tri-Clover Clamp Assembly 1/4" BSPT

4I-A201160 Tri-Clover Clamp Assembly 1/4" NPT

## TRI-CLOVER COMPONENTS

4I-F201161 Ferrule 304 Stainless Steel 1/4" BSPT Male

4I-F201162 Ferrule 304 Stainless Steel 1/4" NPT Male

4I-S201164 Tri-Clover EPDM Gasket

4I-C201163 Locking Clamp 304 Stainless Steel

## UNION BALL VALVE

4E-A201281 Brass Union End Ball Valve 1/4" BSPT

## POP-UP VALVE

4I-A201288 Large ABSS Rubber Pop-Up Valve  
(Suits ABS80, ABS140, ABS174 and ABS200 Blast Pots)

4I-A201289 Small ABSS Urethane Pop-Up Valve  
(Suits ABS20 and ABS40 Blast Pots)

4I-O201290 Large Rubber O-Ring to Suit Pop-Up Valve

4I-O201291 Small Rubber O-Ring to Suit Pop-Up Valve

4I-A201310 Large Urethane Pop-Up Valve  
(Suits US Blast Pots 3.5-20 ft<sup>3</sup>)

4I-A201311 Small Urethane Pop-Up Valve  
(Suits US Blast Pots 0.7-1.5 ft<sup>3</sup>)

4I-S201313 Large Urethane O-Ring to Suit Pop-Up Valve

4I-S201312 Small Urethane O-Ring to Suit Pop-Up Valve



## PUSHER LINES C/W BALL VALVES

### ABSS PERFORMANCE BLAST POT PRESSURE HOLD

4I-A201284	15mm Suits ABS20 Blast Pots
4I-A201285	25mm Suits ABS40 Blast Pots
4I-A201286	32mm Suits ABS80 Blast Pots
4I-A201287	32mm Suits ABS140, ABS174, ABS200 Blast Pots
4I-A201585	15mm Suits ABS100, ABS 185 Blast Pots (US Pots)

### ABSS PERFORMANCE BLAST POT PRESSURE HOLD

4I-A201586	32mm Suits ABS140, ABS174, ABS200 Blast Pots
4I-A201587	32mm Suits ABS100, ABS185 (US Pots)

### ABSS HI-FLOW BLAST POT AUTO EXHAUST

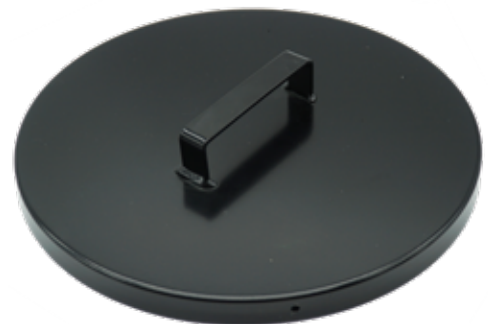
4I-A201345	40mm Suits ABS140HF Blast Pots
4I-A201346	40mm Suits ABS174HF Blast Pots
4I-A201347	40mm Suits ABS200HF Blast Pots
4I-A201588	40mm Suits ABS100, ABS185 (US Pots)

### ABSS HI-FLOW BLAST POT PRESSURE HOLD

4I-A201589	40mm Suits ABS140HF Blast Pots
4I-A201590	40mm Suits ABS174HF Blast Pots
4I-A201591	40mm Suits ABS200HF Blast Pots
4I-A201592	40mm Suits ABS100, ABS185 (US Pots)

## BLAST POT LIDS TO SUIT ABSS BLAST POTS

4B-L950225	Suits Models ABS20 and ABS40 Blast Pots
4B-L950227	Suits Models ABS80 and ABS140 Blast Pots
4B-L200773	Suits Model ABS174 and ABS185 Blast Pot
4B-L980176	Suits Model ABS200 Blast Pot
4B-L201326	Suits US Model ABS100



# BLAST POT SPARE PARTS

## PERFORATED MESH BLAST POT SCREENS

4B-S950226 Suits Models ABS20 and ABS40 Blast Pots

4B-S950228 Suits Models ABS80 and ABS140 Blast Pots

4B-S200774 Suits Models ABS174 and ABS185 Blast Pot

4B-S980179 Suits Models ABS200 Blast Pot

4B-S201327 Suits US Model ABS100

4B-S200774 Suits US Model ABS185



## ABSS AUTO EXHAUST VALVES

4I-A201455 ABSS Blast Pot Exhaust Valve Only

4I-D201458 Exhaust Valve Diaphragm (only one required)

4I-A201565 Muffler to Suit



## ABSS AUTO EXHAUST VALVES

For ABS7 and ABS20

4I-A201282 ABSS Blast Pot Exhaust Valve Only

4I-A201316 Exhaust Pipe and Reducing Bush

4I-A201283 Exhaust Valve Seal Set (Orange and Black)



## ABSS AIR CONTROL VALVES

4I-A201082	Air Control Valve 3/4" NPT
4I-A201094	Air Control Valve 1" NPT
4I-A201064	Air Control Valve 1 1/4" NPT
4I-A201077	Air Control Valve 1 1/2" NPT
4I-A201324	Air Control Valve 2" NPT
4I-A201402	Service Kit (Suit 3/4", 1")
4I-A201400	Service Kit (Suit 1 1/4", 1 1/2")



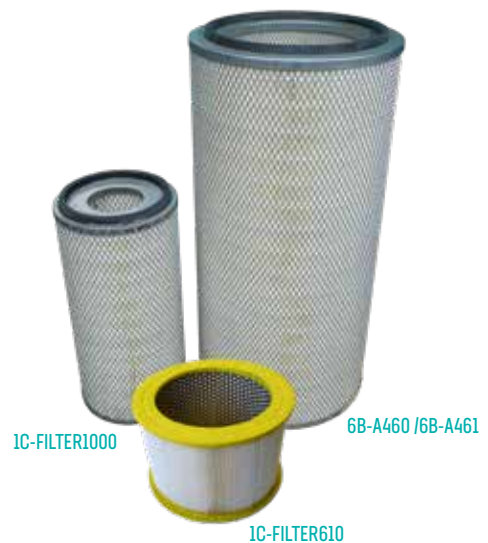
## COMBINATION REMOTE VALVES

4I-A201359	Combination Inlet/Exhaust Valve 1 1/4" BSP
4I-A201371	Service Kit
4I-C201348	Exhaust Hose Adaptor 1" BSP
4H-BHHW1938	Exhaust Hose - Per Metre



## FILTER CARTRIDGES

6B-A460	Replacement Filter Cartridge (Open One End) Suits Dust Collector Models 6A-A201122 and 6A-A201123
6B-A461	Filter Cartridge (Open Both Ends)
1C-FILTER610	Replacement Filter Cartridge Suits Old Style SB1000 Blast Cabinet
1C-FILTER1000	Replacement Filter Cartridge Suits 6A-A200823 Dust Collector



# OPERATOR CONTROLS

## DEADMAN HANDLES AND HOSE

### PNEUMATIC DEADMAN HANDLE

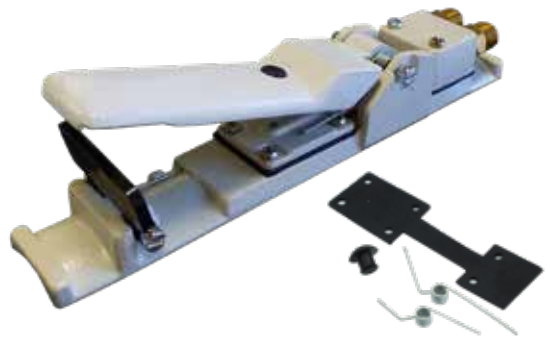
No More Annoying Air Leaks  
Solid Stainless Steel Robust Construction

A202289 ABSS Pneumatic Deadman Handle

4J-A201292 Pneumatic Deadman Handle RLX

4J-A201314 Service Kit

4J-DM2263-002 Pneumatic Deadman Handle STX



### ABSS PNEUMATIC DEADMAN CONTROL COLOUR CODED TWINLINE

4H-H201341 6mm Tinline Per Metre

4H-H201341-R 6mm Tinline - 100m Roll

4H-A201190-1 Deadman Hose Assembly - 12m

4H-A201190 Deadman Hose Assembly - 12m

4H-N201196 1/4" BSP - 6mm Hose Brass Fitting

4H-OTK08 OTK Hose Clip to suit ABSS Tinline





## ELECTRICAL DEADMAN

### ELECTRIC DEADMAN HANDLE

#### THUMB CONTROL - SEALED UNIT

4J-291275-2 Electric Deadman Handle 12 Volt (2 Wire)

4J-281275-3 Electric Deadman Handle 12 Volt (3 Wire)

#### THUMB CONTROL - REPAIRABLE UNIT

4J-25001-2 Electric Deadman Handle 12 Volt (2 Wire)

4J-25001-3 Electric Deadman Handle 12 Volt (3 Wire)

4J-DM2263-402 Electric Deadman Handle STX G2



### ELECTRIC DEADMAN - REPAIR KIT

4J-291282 Electric Deadman - Repair Kit

### ELECTRIC DEADMAN HANDLE - SHORT PROOF

Thumb Control - Repairable Unit  
Suits ABSS Short Proof Control System

4J-25001-SP2 Electric Deadman Handle 12 Volt (2 Wire)

4J-25001-SP3 Electric Deadman Handle 12 Volt (3 Wire)



### SAFETY BALL AND CHAIN

4J-BC25 Ball and Chain - 25mm  
Suits 25001 Model Electric Deadman Handles

4J-BC20 Ball and Chain - 20mm



## FITTED ELECTRICAL DEADMAN CONTROL CABLE

### CABLES FITTED WITH 2 PIN MALE AND FEMALE

4J-A201387 12 Volt x 20m Length

4J-A201388 12 Volt x 40m Length

### CABLES FITTED WITH 3 PIN MALE AND FEMALE

4J-A201332 12 Volt x 20m Length

4J-A201333 12 Volt x 40m Length



## DEADMAN CONTROL CABLE - PER METRE

Specify Length Required

4J-66035439-2 12 Volt, 2 Core Deadman Control Cable Only

4J-66035439-3 12 Volt, 3 Core Deadman Control Cable Only



## ELECTRIC DEADMAN CABLE PLUGS

### 2 CORE, 2 PIN TWIST LOCK CONNECTORS

4J-ECK2001 Male TWISTLOCK Plug  
Suited for Electrical Deadman Model 4J-25001-REP

4J-ECK2002 Female TWIST LOCK Socket  
Suited for Electrical Deadman Model 4J-25001-REP

### 3 CORE, 3 PIN TWIST LOCK CONNECTORS

4J-ECK3001 Male TWISTLOCK Plug  
Suited for Electrical Deadman Model 4J-25001-REP

4J-ECK3002 Female TWIST LOCK Socket  
Suited for Electrical Deadman Model 4J-25001-REP



## ELECTRIC DEADMAN CONVERSION KIT

### ELECTRIC DEADMAN CONVERSION KIT

The ABSS Electrical Deadman Conversion Kit uses an Electric Signal 12V DC or 240V AC which is received immediately upon activation at the Conversion Hub located at the Blast Pot; the Air Valve is still activated by a pneumatic signal received from the Hub. The result is a very fast activation and deactivation. Much faster than the Pneumatic Deadman control.

There is no requirement to upgrade your existing Blast Pot Air Control Valves.

4J-A201385	Electric Deadman Conversion 12V DC box only
4J-A20138	Electric Deadman Conversion 240V AC box only
4J-A201965	12 Volt DC Supply / 12 Volt DC Output
4J-A201966	240 Volt AC Supply / 12 Volt DC Output



### ELECTRIC DEADMAN SHORT PROOF SYSTEM - CARD ONLY

4J-SCC-2	12 Volt Short Proof Control Card - Card Only (Each Card Controls Two (2) Blast Operators)
----------	--



### COMPLETE SHORT PROOF SYSTEMS

Available in: Two (2) Operator, Four (4) Operator or Six (6) Operator

[Contact Us For Further Details](#)



# ABRASIVE FEED VALVES

## MICRO ABRASIVE METERING VALVE

Used on ABSS Auto Exhaust Blast Pots Models ABS40, ABS80, ABS140, ABS174, ABS100 and ABS185

4I-A201216	1 1/4" BSP x 1 1/4" BSP Model
4I-A201322	1 1/2" BSP x 1 1/2" BSP Model
4I-A201384	1 1/4" BSP x 1 1/2" BSP Model



## MICRO VALVE SERVICE KITS

4I-A201325	Micro Valve Full Service Kit
4I-A201454	Micro Valve Soft Service Kit

## MINI MICRO ABRASIVE METERING VALVE

Used on ABSS Auto Exhaust Blast Pots Model ABS7 and ABS20

4I-A201390	3/4" BSP/NPT x 3/4" BSP/NPT Model
4I-T201576	Base 3/4" BSP Tee Piece
4I-A201453	Service Kit



## REPLACEMENT PIPE NIPPLES

4I-P201226	1 1/4" BSP-M x 1" BSP-F (32NB)
4I-P201308	1 1/2" BSP-M x 1" BSP-F (32NB)
4I-P201223	1 1/4" BSP-M x 1 1/4" BSP-M (32NB)
4I-P201362	1 1/4" BSP-M x 1 1/2" BSP-M (32NB)
4I-P201224	1 1/2" BSP-M x 1 1/2" BSP-M (38NB)



## SERIES II PRESSURE HOLD METERING VALVE

1 1/4" (32mm) Abrasive Inlet Port  
1" (25mm) Side Cleanout Port

4I-2152-007 Model 1 1/4" NPT Tungsten Carbide Sleeve

4I-2152-008 Model 1 1/2" NPT Tungsten Carbide Sleeve



## SPARE PARTS KIT

4I-2152-000-99 Replacement Parts Kit Complete with Tungsten Carbide Sleeve and Plunger

4I-2152-000-98 Replacement Parts Kit (Urethane Kit, Seals, Gaskets and O-Rings)

4I-2152-000-10 Urethane Seat Only (Red)



## BLAST LIGHTS

### HALOGEN BLAST LIGHT 12 VOLT, 20 WATT

Rugged Heavy Duty Halogen Blast Light  
Diecast Aluminium Body  
Ribbed Design for Heat Dissipation

4K-290285 Complete Blast Light Assembly - 20 Watt



### HALOGEN BLAST LIGHT - REPLACEMENT PARTS

4K-290286 20 Watt Halogen Globe

4K-290284 35 Watt Halogen Globe

4K-290297 Pyrex Glass Lens Kit c/w Heat Ring



# SPECIALTY APPLICATION

## INTERNAL PIPE BLASTERS

### MUB-HB-JR INTERNAL PIPE CLEANER

Bast Cleans internal pipe diameters from between 19mm to 50mm ( $\frac{3}{4}$ " to 2")

Available with Reducer and Centering Collars

MUB-EE01098 MUB-JR c/w Reducer and Centering Collars

MUB-EE01099 MUB-JR c/w Centering Collars



### MUB CIRCLE BLAST INTERNAL PIPE CLEANER

Bast Cleans internal pipe diameters from between 32mm to 100mm ( $1\frac{1}{4}$ " to 4")

Attaches to 27mm O.D. Blast Hose

MUB-291591 MUB Circle Blast



### MUB 360 INTERNAL PIPE CLEANER

Bast Cleans internal pipe diameters from between 50mm to 150mm (2" to 6")

Equipped with large Carbide deflector  
Standard  $1\frac{1}{4}$ " NPSM nozzle thread

MUB-291400 MUB-360 Internal Pipe Cleaner



## MUB SR INTERNAL PIPE CLEANER

Best Cleans internal pipe diameters from between 50mm to 300mm (2" to 12")  
Scissor Carriage sold separately

MUB-EE01076 MUB-SR ID Internal Pipe Cleaner

## MUB SR DEFLECTOR TIPS

MUB-291562 Deflector Tip - Tungsten Carbide

MUB-291554 Deflector Tip - Boron Carbide

MUB-291568 Deflector Tip - Roctec®500



## MUB SR INTERNAL PIPE BLASTER COMPLETE ASSEMBLIES

MUB-291555 Tool c/w Scissor Carriage  
125mm - 300mm (5" - 12")

MUB-291553 Tool c/w Centering Collars  
75mm - 125mm (3" - 5")



## ACCESSORIES

MUB-291559 Centering Collars Kit  
75mm - 125mm (3" - 5")

MUB-291556 ABSS-IPC-SRSC Scissor Carriage Assembly Only  
Used solely with the ABSS-IPC-SR ID Blast Tool

## THE MUB "TWISTER" BLASTER

Cleans internal pipe diameters between 300mm to 900mm (12" to 36")

Designed for reduced maintenance and large production requirements

MUB-221700 MUB "Twister" Internal Pipe Cleaner



# STANDARD BLAST NOZZLES

## NOZZLES AND COUPLINGS

### TUNGSTEN CARBIDE BLAST NOZZLES

Aluminium Jacket - Coarse Thread 2" UNC

4F-ABSSATW3 NO.3 -  $\frac{3}{16}$ " (4.8mm) Long Venturi

4F-ABSSATW4 NO.4 -  $\frac{1}{4}$ " (4.8mm) Long Venturi

4F-ABSSATW5 NO.5 -  $\frac{5}{16}$ " (8mm) Long Venturi

4F-ABSSATW6 NO.6 -  $\frac{3}{8}$ " (9.5mm) Long Venturi

4F-ABSSATW7 NO.7 -  $\frac{7}{16}$ " (11mm) Long Venturi

4F-ABSSATW8 NO.8 -  $\frac{1}{2}$ " (12.7mm) Long Venturi



### SILICON CARBIDE BLAST NOZZLES

Polyurethane Jacket - Coarse Thread 2" UNC

4F-ABSSASW5 NO.5 -  $\frac{5}{16}$ " (8mm) Long Venturi

4F-ABSSASW6 NO.6 -  $\frac{3}{8}$ " (9.5mm) Long Venturi

4F-ABSSASW7 NO.7 -  $\frac{7}{16}$ " (11mm) Long Venturi

4F-ABSSASW8 NO.8 -  $\frac{1}{2}$ " (12.7mm) Long Venturi



### SYCLONE BLAST NOZZLE

Polyurethane Jacket - Coarse Thread 2" UNC

4F-ABSSSYC5 NO.5 -  $\frac{5}{16}$ " (8mm) Long Venturi

4F-ABSSSYC6 NO.6 -  $\frac{3}{8}$ " (9.5mm) Long Venturi

4F-ANSSSYC7 NO.7 -  $\frac{7}{16}$ " (11mm) Long Venturi

4F-ANSSSYC7 NO.8 -  $\frac{1}{2}$ " (12.7mm) Long Venturi



### TUNGSTEN CARBIDE BLAST NOZZLES – SHORT

Polyurethane Jacket - Coarse Thread 2" UNC

4F-ABSSATS4 NO.4 -  $\frac{1}{4}$ " (6mm) Short Venturi

4F-ABSSATS5 NO.5 -  $\frac{5}{16}$ " (8mm) Short Venturi

4F-ABSSATS6 NO.6 -  $\frac{3}{8}$ " (9.5mm) Short Venturi

4F-ABSSATS7 NO.7 -  $\frac{7}{16}$ " (11mm) Short Venturi

4F-ABSSATS8 NO.8 -  $\frac{1}{2}$ " (12.7mm) Short Venturi





# SPECIAL BLAST NOZZLES

## NOZZLES AND COUPLINGS

### TUNGSTEN CARBIDE WATER INDUCTION NOZZLE

Aluminium Jacket 2" UNC Thread includes Water Whip Hose and Ball Valve

4F-HYDWJ3	No.3 - 3/16" (4.8mm) Venturi
4F-HYDWJ4	No.4 - 1/4" (6mm) Venturi
4F-HYDWJ5	No.5 - 5/16" (8mm) Venturi
4F-HYDWJ6	No.6 - 3/8" (9.5mm) Venturi
4F-HYDWJ7	No.7 - 7/16" (11mm) Venturi
4F-HYDWJ8	No.8 - 1/2" (12.7mm) Venturi



### 45° ANGLE TUNGSTEN CARBIDE BLAST NOZZLE

Coarse Thread 2" UNC. Also available in Triple Orifice

4F-BNS45-4	No. 4 - 1/4" (6mm) Single Orifice
4F-BNS45-5	No. 5 - 5/16" (8mm) Single Orifice
4F-BNS45-6	No. 6 - 3/8" (9.5mm) Single Orifice



### TUNGSTEN CARBIDE HOSE INSERT BLAST NOZZLE

4F-BNI25-4	25mm Hosetail x No.4 - 1/4" (6mm)
4F-BNI25-5	25mm Hosetail x No.5 - 5/16" (8mm)
4F-BNI25-6	25mm Hosetail x No.6 - 3/8" (9.5mm)
4F-BNI32-5	32mm Hosetail x No.5 - 5/16" (8mm)
4F-BNI32-6	32mm Hosetail x No.6 - 3/8" (9.5mm)
4F-BNI32-7	32mm Hosetail x No.7 - 7/16" (11mm)
4F-BNI32-8	32mm Hosetail x No.8 - 1/2" (12.7mm)



### SPECIALTY CUSTOM BUILT BLAST LANCES

Tungsten Carbide 45° 2" UNC Thread  
Lance Length - 635mm (not including Thread)  
For Internal Blasting and Hard to Access Blast Area Applications

4F-A200790	No. 4 - 1/4" (6mm)
------------	--------------------



# HOSE AND FITTINGS

## COUPLINGS AND NOZZLE HOLDERS

### ALUMINIUM NOZZLE HOLDERS/STEEL COUPLINGS

4G-NH1/2 Aluminium Nozzle Holder 3/4" Thread  
Suits 27mm OD Blast Hose

4G-SC3/4 Steel Blast Claw Coupling



### NYLON BLAST NOZZLE HOLDERS

4G-NNH3/4 Suits BHHW1334 and BHS2034 (34mm OD Hose)

4G-NNH1 Suits BHHW2040 and BHS2540 (40mm OD Hose)

4G-NNH2 Suits BHHW2548 and BHS3248 (48mm OD Hose)

4G-NNH3 Suits BHHW3255 and BHS3855 (55mm OD Hose)

4G-NNH4 Suits BHHW3860 (60mm OD Hose)



### NYLON COUPLINGS

4G-NHC3/4 Suits BHHW1334 and BHS2034 (34mm OD Hose)

4G-NHC1 Suits BHHW2040 and BHS2540 (40mm OD Hose)

4G-NHC2 Suits BHHW2548 and BHS3248 (48mm OD Hose)

4G-NHC3 Suits BHHW3255 and BHS3855 (55mm OD Hose)

4G-NHC4 Suits BHHW3860 (60mm OD Hose)



### BRASS COUPLINGS

4G-BHC1 Suits BHHW2040 and BHS2540 (40mm OD Hose)

4G-BHC2 Suits BHHW2548 and BHS3248 (48mm OD Hose)

4G-BHC3 Suits BHHW3255 and BHS3855 (55mm OD Hose)

4G-BHC4 Suits BHHW3860 (60mm OD Hose)



## ALUMINIUM NOZZLE HOLDERS AND STEEL CLAW COUPLING GASKETS

4G-NH20GSKT Gasket to suit 4G-NH1/2 Nozzle Holder

4G-SC3/4GSKT Gasket to suit 4G-SC3/4 Claw Coupling



## NYLON NOZZLE HOLDER GASKET

4G-GKS25-1 25mm Narrow Bore Nozzle Gasket  
Suits ABHS20 and ABHS25 Standard Blast Hose

4G-GKS32-1 32mm Wide Bore Nozzle Gasket  
Suits ABHS32 and Above



## NYLON COUPLINGS GASKETS

4G-SBG-3/4 Gasket suits Nylon Hose Couplings (NHC3/4 tapered)

4G-SBG-1 Gasket suits Nylon Hose Couplings (NHC3/4 and NHC1)

4G-SBG-2 Gasket suits Nylon Hose Couplings (NHC2 and NHC3)



## METAL COUPLING GASKET

4G-SBG Gasket suits Brass and Steel Couplings



# COUPLINGS AND NOZZLE HOLDERS

## NYLON THREADED BLAST POT COUPLINGS

4G-NTC-1 1¼" Female BSP Claw Coupling

4G-NTC-2 1½" Female BSP Claw Coupling



## STEEL THREADED BLAST POT COUPLINGS

4G-STC-1 1¼" Female BSP Claw Coupling

4G-STC-2 1½" Female BSP Claw Coupling



## BRASS THREADED BLAST POT COUPLINGS

4G-BTC-1 1¼" Female BSP Claw Coupling

4G-BTC-2 1½" Female BSP Claw Coupling



## THREADED BLAST COUPLING GASKETS

4G-SBG-2 Gasket to suit 1¼" and 1½" Nylon Blast Pot Couplings

4G-SBG Gasket to suit 1¼" and 1½" Brass and Steel Pot Couplings



## COUPLING ACCESSORIES

### COUPLING LOCKING PINS AND SCREWS

- 4G-C201342 "D" Clip Coupling Locking Pins
- 4G-C201343 "R" Clip Coupling Locking Pins
- 4G-S201344 Screws to suit Couplings and Nozzle Holders



### WHIP CHECK SAFETY CABLES

- 4G-WC3 3mm Small x 600mm (Approx Length)
- 4G-WC6 6mm Large x 1000mm (Approx Length)



## NYLON NOZZLE AND COUPLING GUIDE

Blast Hose	Description	Nozzle Holder	Coupling
4H-BHS1327	DuraBlast Standard 13mm ID x 27mm OD	4G-NH1/2	4G-SC1/2
4H-BHS2034	DuraBlast Standard 20mm ID x 34mm OD	4G-NNH3/4	4G-NHC3/4
4H-BHS2540	DuraBlast Standard 25mm ID x 40mm OD	4G-NNH1	4G-NHC1
4H-BHS3248	DuraBlast Standard 32mm ID x 48mm OD	4G-NNH2	4G-NHC2
4H-BHS3855	DuraBlast Standard 38mm ID x 55mm OD	4G-NNH3	4G-NHC3
4H-BHHW1334	DuraBlast Heavy Wall 13mm ID x 34mm OD	4G-NH3/4	4G-NHC3/4
4H-BHHW2040	DuraBlast Heavy Wall 20mm ID x 40mm OD	4G-NNH1	4G-NHC1
4H-BHHW2548	DuraBlast Heavy Wall 25mm ID x 48mm OD	4G-NNH2	4G-NHC2
4H-BHHW3255	DuraBlast Heavy Wall 32mm ID x 55mm OD	4G-NNH3	4G-NHC3
4H-BHHW3860	DuraBlast Heavy Wall 38mm ID x 60mm OD	4G-NNH4	4G-NHC4

# ABSS PREMIUM BLAST HOSE

## ABSS DURABLAST PREMIUM QUALITY HOSE

Pressure rated to 10 Bar (150psi) Working Pressure  
Safety Factor 3:1  
Temperature Rated: -30°C to +80°C

### Construction

Tube: Premium Black Conductive NR  
Reinforcement: High Tensile Textile Cords  
Cover: Black Conductive SBR/NR Pin Pricked  
Standard Length: 20 Meters



## ABSS DURABLAST PREMIUM QUALITY 10 BAR WP STANDARD LIGHT WALL 2 PLY BLAST HOSE

4H-BHS1327	DuraBlast Standard 13mm ID x 27mm OD
4H-BHS2034	DuraBlast Standard 20mm ID x 34mm OD
4H-BHS2540	DuraBlast Standard 25mm ID x 40mm OD
4H-BHS3248	DuraBlast Standard 32mm ID x 48mm OD
4H-BHS3855	DuraBlast Standard 38mm ID x 55mm OD

## ABSS DURABLAST PREMIUM QUALITY 10 BAR WP HEAVY WALL 4 PLY BLAST HOSE

4H-BHHW1334	DuraBlast Heavy Wall 13mm ID x 34mm OD
4H-BHHW2040	DuraBlast Heavy Wall 20mm ID x 40mm OD
4H-BHHW2548	DuraBlast Heavy Wall 25mm ID x 48mm OD
4H-BHHW3255	DuraBlast Heavy Wall 32mm ID x 55mm OD
4H-BHHW3860	DuraBlast Heavy Wall 38mm ID x 60mm OD

## COMPRESSED AIR "BULL" HOSE

### PREMIUM QUALITY COMPRESSED AIR "BULL" HOSE

Pressure rated to 14 Bar (200psi) Working Pressure  
Safety Factor 3:1

Temperature Rated: -30°C to +70°C

Standard Length: 20 Meters

4H-A201801 3/4" (20mm) Contractor Air Hose Assembly  
c/w Fittings

4H-A201802 1" (25mm) Contractor Air Hose Assembly  
c/w Fittings



### PREMIUM QUALITY 10 BAR WP COMPRESSED AIR "BULL" HOSE

4H-BULL-38 Wrapped Bull Hose 1 1/2" ID (38mm)

4H-BULL-50 Wrapped Bull Hose 2" ID (50mm)

4H-BULL-75 Wrapped Bull Hose 3" ID (75mm)



### BULL HOSE END ASSEMBLIES - ONE END (SUITS STANDARD ABSS BULL HOSES)

4I-A201372 End Assembly 1 1/2" BSP suit 38mm ID Hose

4I-A201373 End Assembly 2" BSP suit 50mm ID Hose

4I-A201374 End Assembly 3" BSP suit 75mm ID Hose



### BULL HOSE CLAW COUPLINGS - ONE END

4I-C201375 1 1/2" BSP Female - Medium Head

4I-C201376 2" BSP Female - Medium Head

4I-C201377 3" BSP Female - Large Head

4I-C201378 1 1/2" BSP Male - Medium Head

4I-C201379 2" BSP Male - Medium Head

4I-C201380 3" BSP Male - Large Head



# HOSE AND FITTINGS

## HEAVY DUTY PVC CONNECTION HOSE

Connects Blast Pot to Recovery Hopper and Dust Drum to Dust Collector Hopper

H-LAYFLAT150	150mm ID (6" ID) HD Layflat Hose
H-HC150	Hose Clamps to suit 150mm Layflat Hose



## RECOVERY SUCTION HOSE

To suit ABSS Blast Room Recovery Systems

H-RH100MM	100mm ID Rubber, Wire Reinforced
H-RH125MM	125mm ID Rubber, Wire Reinforced
H-RH150MM	150mm ID Rubber, Wire Reinforced
H-RH200MM	200mm ID Rubber, Wire Reinforced



## HD BOLT TYPE HOSE CLAMPS

H-HC115122	Suits 100mm ID (115mm - 122mm)
H-HC140147	Suits 125mm ID (140mm - 147mm)
H-HC172179	Suits 150mm ID (172mm - 179mm)
H-HC227239	Suits 200mm ID (227mm - 239mm)



## FLEXIBLE HOSE

IC-PFD100	Flexible Duct Plastic 4" (100mm)
IC-PFD150	Flexible Duct Plastic 6" (150mm)





## BALL VALVES - BRASS, NICKEL PLATED

Male/Female, Lever Handle

### WORKING PRESSURE 3000KPA, 435PSI

V-V201460	1/4" BSP Male and Female - 6mm Bore
V-V201461	1/2" BSP Male and Female - 13mm Bore
V-V201462	3/4" BSP Male and Female - 19mm Bore
V-V201463	1" BSP Male and Female - 25mm Bore



### WORKING PRESSURE 2500KPA, 360PSI

V-V201464	1 1/4" BSP Male and Female - 32mm Bore
V-V201465	1 1/2" BSP Male and Female - 40mm Bore
V-V201466	2" BSP Male and Female - 50mm Bore

## BALL VALVES - BRASS, NICKEL PLATED

Female/Female, Lever Handle

### WORKING PRESSURE 3000KPA, 435PSI

V-V201469	1/2" BSP Female and Female - 13mm Bore
V-V241470	3/4" BSP Female and Female - 19mm Bore
V-V241471	1" BSP Female and Female - 25mm Bore



### WORKING PRESSURE 2500KPA, 360PSI

V-V241472	1 1/4" BSP Female and Female - 32mm Bore
V-V241473	1 1/2" BSP Female and Female - 40mm Bore
V-V241474	2" BSP Female and Female - 50mm Bore

## BREATHING HOSE ASSEMBLIES

Compliant to AS/NZS 1716 Standards

4H-A201179	10mm ID Breathing Hose Assembly 22m
4H-A201179-1	10mm ID Breathing Hose Assembly 12m
4H-BH10MM	Breathing Hose open length (please advise length required)
4H-C201195	Dual Action Safety Type 1/4" BSP Male Adaptor
4H-C201194	Dual Action Safety Type 1/4" BSP Male Coupling



# OPERATOR SAFETY

## NOVA 2000 BLAST HELMET

### OPERATOR BLAST HELMET

4C-NV2000	Nova 2000 Blast Helmet
4C-NV2000CT	Nova 2000 Blast Helmet c/w Cool Air Tube
4C-NV2000HT	Nova 2000 Blast Helmet c/w Heating Air Tube
4C-NV2000-C40	Nova 2000 Blast Helmet c/w Nova C40 Climate Control Device



### NV2000 BLAST HELMET CAPES

4C-NV2002L	Leather Cape c/w Inner Bib
4C-NV2002	Nylon Cape c/w Inner Bib



### CLIMATE CONTROL TUBES

Suits NV2000 and Nova 3 Blast Helmets

4C-NV4000-01	Cool Air Tube - Cools Air Entering the Blast Helmet up to 18°C
4C-NV4000-02	Heating Air Tube - Warms Air Entering the Blast Helmet up to 17°C
4C-NVC40	Nova C40 Climate Control Device



## NOVA 2000 BLAST HELMET COMPONENTS

### BLAST HELMET BREATHING AIR TUBE

4C-NV2021	Breathing Air Tube (Black) Suits Nova 2000
4C-NV2021B	Breathing Air Tube (Grey) Suits Nova 3
4C-NV2016	Flow Control Valve and Belt Suits Nova 2000/Nova 3
4C-NV2022	Belts with Buckles Suits Nova 2000/Nova 3



### WINDOW COMPONENTS

4C-NV2003	Window Frame Gasket
4C-NV2004	Visor with Hinge and Screens



### HELMET LINERS

4C-NV2009	Polystyrene Helmet Liner
4C-NV2010S	Sidewings - Small
4C-NV2010M	Sidewings - Medium
4C-NV2010L	Sidewings - Large
4C-NV2009/10	Liner Kit (Includes NV2009 and NV2010M)



### OTHER COMPONENTS

4C-NV2006/7	Air Inlet Assembly - Lock Nut and Nipple
4C-NV2008	Visor Latch and Screws



# NOVA 3 BLAST HELMET

## OPERATOR BLAST HELMET

4C-NV3	Nova 3 Blast Helmet
4C-NV3-CT	Nova 3 Blast Helmet c/w Cool Air Tube
4C-NV3-HT	Nova 3 Blast Helmet c/w Heating Air Tube
4C-NV3-C40	Nova 3 Blast Helmet c/w Nova C40 Climate Control Device



## NOVA 3 BLAST HELMET CAPES

4C-NV3-750	Nylon Cape 710mm c/w Inner Bib - Standard
4C-NV3-751	Nylon Cape 965mm c/w Inner Bib
4C-NV3-752	Leather Cape 710mm c/w Inner Bib
4C-NV3-753	Leather Cape 965mm c/w Inner Bib



## NOVA 3 BLAST HELMET JACKETS

4C-NV3-754	Blast Jacket - Size XL
4C-NV3-755	Blast Jacket - Size XXL



## NOVA 3 BLAST HELMET COMPONENTS

### VISOR COMPONENTS

- 4C-NV3-721 Inner Gasket
- 4C-NV3-723 Inner Lens Frame
- 4C-NV3-726 Visor Kit with Hinge Pin and Latch



### HEAD LINER COMPONENTS

- 4C-NV3-734 Head Liner Kit c/w Head Liner, Padding, and Clips (4)
- 4C-NV3-735 Liner Foam Padding



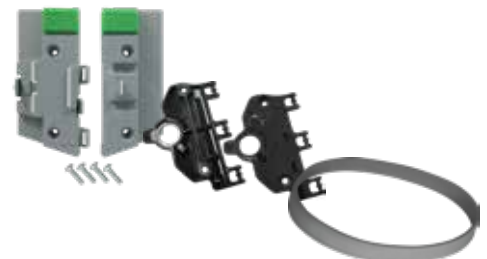
### HELMET PADDING

- 4C-NV3-731 Side Padding Frames (left and right)
- 4C-NV3-732 Side Padding (available in S, M, and L)
- 4C-NV3-733 Side Padding Covers (left and right)



### OTHER COMPONENTS

- 4C-NV3-727/8 Visor Latch Mount Kit c/w Covers and Mounts
- 4C-NV3-730 Padding Connectors (left and right)
- 4C-NV3-759 Cape Coverband



# BLAST HELMET REPLACEMENT LENSES



**NOVA 2000**

**NOVA 3**

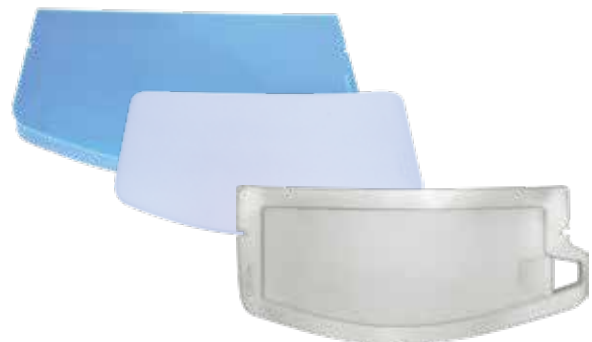
## NOVA 2000 REPLACEMENT LENSES

4C-NV2031-50	NOVA 2 Outer Lens NV2031 50pk
4C-NV2031-200	NOVA 2 Outer Lens NV2031 200pk
4C-NV2031-1K	NOVA 2 Outer Lens NV2031 1000pk
4C-NV2018-10	NOVA 2 Outer Lens NV2018 50pk
4C-NV2018-100	NOVA 2 Outer Lens NV2018 100pk
4C-NV2017-50	NOVA 2 Outer Lens NV2017 50pk
4C-NV2017-1K	NOVA 2 Outer Lens NV2017 1000pk



## NOVA 3 REPLACEMENT LENSES

4C-NV3-724	Outer Lens 50pk
4C-NV3-722	Inner Lens 10pk
4C-NV3-725	Tear-Off Lens 50pk



## BREATHING FILTRATION

### ABSS BREATHING FILTRATION KIT C/W CONNECTION HOSE AND FRAME

- Micro Mist Separator  
Nominal Filtration Rate - 0.01 microns
- 4E-A201323 Odour Removal Filter  
Nominal Filtration Rate - 0.01 microns
- Not designed to remove Carbon Monoxide, Carbon Dioxide, or other gases from the Air Supply
- 4E-AMH-EL250 Replacement Micro Mist Filter Element
- 4E-AMF-EL350 Replacement Odour Removal  
Activated Carbon Filter Element



### CARTRIDGE TYPE BREATHING FILTER

- 4E-04-900 Airline Filter Complete
- 4E-04-900MM Airline Filter Complete c/w Micro Mist Filter
- 4E-04-906 Airline Filter 6 Outlet c/w Couplings
- 4E-04-906MM Airline Filter 6 Outlet c/w Micro Mist Filter
- 4E-APF3100 Replacement Filter Cartridge (with Flange)
- 4E-AFC100 Replacement Filter Cartridge (no Flange)



## SAFETY EQUIPMENT

### OPERATOR BLAST SUITS - DOUBLE SEAL, PRESSED STUD OVER VELCRO

#### COMBINATION NYLON AND CHROME LEATHER SIZES AVAILABLE

4K-1852-M	(M) Medium - Suits 170cm-173cm Tall
4K-1854-L	(L) Large - Suits 173cm-182cm
4K-1856-XL	(XL) Extra Large - Suits 186cm Plus
4K-1858-XXL	(XXL) 2X Extra Large - Suits 186cm Plus
4K-1860-XXXL	(XXXL) 3X Extra Large - Suits 186cm Plus



#### ALL NYLON CONSTRUCTION SIZES AVAILABLE

4K-1852N-M	(M) Medium - Suits 170cm-173cm Tall
4K-1854N-L	(L) Large - Suits 173cm-182cm
4K-1856N-XL	(XL) Extra Large - Suits 182cm-186cm
4K-1858N-XXL	(XXL) 2X Extra Large - Suits 186cm Plus

#### HEAD SOCKS

4K-49050-10	Head Socks 10pk
-------------	-----------------

## CUSTOM SOLUTIONS

**At ABSS, we pride ourselves on delivering to our Customers the Best Solution the First time.**

If you have a specific requirement such as a Corporate Colour you would like your ABSS Product Finished in, we can accommodate this.

**Just Another Benefit when Choosing ABSS Blast Equipment**

*Contact us today for further details*



FOR FURTHER DETAILS PLEASE CONTACT US ON 1300 727 240



# BULK STORAGE BLAST VESSELS

## ABSS BULK STORAGE BLAST VESSELS FEATURES

### 150 PSI RATED BLAST POTS

FULLY COMPLIANT TO AUSTRALIAN STANDARDS AS1210, CRN REGISTERED,  
NATIONAL BOARD CERTIFIED, U-STAMPED (ASME), A-STAMPED (ALBERTA)

- Accessory Mounting Port (4) to house Bulk Bag Loading Platform, Safety Cage, Swivel Filling Funnel, Hose Racks
- Pneumatic or Electric Deadman System
- Full 3" Inlet
- 250mm Top Closure with 5 Bolt Cam-Locks (Posi-Seal Ready)
- Full Loading Lifting Eyes
- Full Access Double Claw Manway
- 4" Bottom Drain
- Genuine Schmidt Thompson II or Raptor Valve
- Heavy Duty Steel Frame Skid Mounted
- Two (2) Access Ladder



MB100 Skid Mounted Bulk Storage



# BULK STORAGE BLAST VESSELS

## MB100 SKID MOUNTED BULK STORAGE

### 4A-A201273

**Capacity** 100 ft<sup>3</sup> (2800L)

**Diameter** 1524 mm

**Height** 2130 mm

**Garnet Capacity** 6400 kg

150 PSI Rated Vessel c/w Four (4) Outlets

Pneumatic Deadman Standard Upgradeable to Electric Deadman

Complies with Australian Standards AS1210, CRN Registered, National Board Certified, U-Stamped (ASME), A-Stamped (Alberta)



## MB100 TRAILER MOUNTED BULK STORAGE

### 4A-A201274

**Capacity** 100 ft<sup>3</sup> (2800L)

**Diameter** 1524 mm

**Height** 2130 mm

**Garnet Capacity** 6400 kg

150 PSI Rated Vessel c/w Four (4) Outlets

Pneumatic Deadman Standard Upgradeable to Electric Deadman

Complies with Australian Standards AS1210, CRN Registered, National Board Certified, U-Stamped (ASME), A-Stamped (Alberta)



## MB160 SKID MOUNTED BULK STORAGE

### 4A-A201275

**Capacity** 160 ft<sup>3</sup> (4500L)

**Diameter** 1830 mm

**Height** 2400 mm

**Garnet Capacity** 10350 kg

150PSI Rated Vessel c/w Six (6) Outlets)

Pneumatic Deadman Standard Upgradeable to Electric Deadman

Complies with Australian Standards AS1210, CRN Registered, National Board Certified, U-Stamped (ASME), A-Stamped (Alberta)



## MB160 TRAILER MOUNTED BULK STORAGE

### 4A-A201276

**Capacity** 160 ft<sup>3</sup> (4500L)

**Diameter** 1830 mm

**Height** 2400 mm

**Garnet Capacity** 10350 kg

150PSI Rated Vessel c/w Six (6) Outlets

Pneumatic Deadman Standard Upgradeable to Electric Deadman

Complies with Australian Standards AS1210, CRN Registered, National Board Certified, U-Stamped (ASME), A-Stamped (Alberta)



FOR FURTHER DETAILS PLEASE CONTACT US ON 1300 727 240

## BULK STORAGE VESSEL - OPTIONAL ACCESSORIES

### BULK LOADING PLATFORM

Allows for Safe and Simple Method of Loading the Abrasive Media into the Bulk Storage Vessel.

Simply Place the Bulk Bag into the Platform and Place the Platform on the Bulk Storage Vessel.

4B-A201277 Bulk Loading Platform



### ABRASIVE FILLING FUNNEL

Swing into Place to allow for Loading of the Abrasive Media into the Bulk Storage Vessel.

When filling is complete, simply swing away from the Opening and Seal.

The Abrasive Filling Funnel suits all Standard Bulk Storage Vessels.

4B-A201278 Abrasive Filling Funnel



## AUTO POSI-SEAL VALVE

A Double Seal Valve 10" (250mm) Diameter Automatic Pop-Up Valve that allows Filling without the removal of the 10" (250mm) Closure.

Internally Vessel Mounted.

Suits all ABSS Bulk Storage Vessel

4B-A201279 Auto Posi-Seal Valve



## HIGH VOLUME MOISTURE SEPARATOR

Available in Two Sizes - Multi Outlet.

Features a Maintenance Free Stainless Steel Coalescing De-Mister Element.

AS1210 Australian Standards Compliant CRN Registered Vessel.

4B-A201280 800 CFM Unit

4B-A201340 1600 CFM Unit



## AIR PREPARATION PRE-FILTER SYSTEMS

Air Preparation Pre-Filter Systems offer a unique means of cooling with an efficient moisture collection system.

These units are robustly built and fully transportable for use in the Abrasive Blasting, Defence, Mining, and Construction Industries.

*Contact ABSS for Further Information Regarding a Suitably Sized Air Preparation Pre-Filter System.*

A-A201942	Air Dryer 200 cfm
A-APC300	Compressed Air Pre-Filter System 300 cfm
A-APC500	Compressed Air Pre-Filter System 500 cfm
A-APC1000	Compressed Air Pre-Filter System 1000 cfm



## CUSTOM ENGINEERED SYSTEMS

Do You Need a Custom Solution to Your Abrasive Blast Cleaning Requirements?

ABSS Specialise in Custom Designed and Engineered Solutions using the Latest Solid Works and CAD Design Packages.

*Contact ABSS for Further Information Regarding a Suitably Sized Air Preparation Pre-Filter System.*

# ABRASIVE BLAST CABINETS

## EASY SELECTION GUIDE

Description	Suction Blast Cabinets			
	CS1000	CS1200	CS1500	CS1800
<b>ABSS Blast Cabinet Model</b>	<b>CS1000</b>	<b>CS1200</b>	<b>CS1500</b>	<b>CS1800</b>
Overall Height (mm)	2200	2200	2300	2200
Overall Width (mm)	1050	1250	1600	1900
Overall Depth (mm)	650	1000	1400	1300
Work Chamber Height (mm)	1010	850	1100	1100
Work Chamber Width (mm)	1000	1200	1500	1800
Work Chamber Depth (mm)	600	800	1200	1200
Minimum Air Requirement @ 50 PSI	15 CFM	15 CFM	15 CFM	15 CFM
Replacement Cartridge	IC-FILTER1000	6B-A460	6B-A460	6B-A460
Blow-Off Air Gun c/w 1m Air Hose	✓	✓	✓	✓
Water Tap and Regulator	✓	✓	✓	✓
<b>Available Upgrades</b>				
Turntable (diameter)	500mm	630mm	1000mm	1000mm
Tumble Basket (diameter x depth)		285mm x 200mm	380mm x 300mm	380mm x 300mm
Reverse Pulse Dust Collector		✓	✓	✓





Description	Pressure Blast Cabinets			
ABSS Blast Cabinet Model	CP800	CP1200	CP1500	CP1800
Overall Height (mm)	2200	2200	2300	2700
Overall Width (mm)	850	1250	1600	1900
Overall Depth (mm)	900	1000	1400	1300
Work Chamber Height (mm)	900	850	1100	1100
Work Chamber Width (mm)	800	1200	1500	1800
Work Chamber Depth (mm)	800	900	1200	1200
Minimum Air Requirement @ 60 PSI	30 CFM	30 CFM	30 CFM	30 CFM
Replacement Cartridge	6B-A460	6B-A460	6B-A460	6B-A460
Blow-Off Air Gun c/w 1m Air Hose	✓	✓	✓	✓
Water Tap and Regulator	✓	✓	✓	✓
Available Upgrades				
Turntable (diameter)	630mm	630mm	1000mm	1000mm
Tumble Basket (diameter x depth)		285mm x 200mm	380mm x 300mm	380mm x 300mm
Auto Reverse Pulse Dust Collector	✓	✓	✓	✓



# ABRASIVE SUCTION BLAST CABINETS

## ABSS SUCTION BLAST CABINET FEATURES

---

- Manufactured using Heavy Gauge Steel Plate
- Two (2) 18 Watt Fluro Lights
- Door Interlocks Design to Cease Blasting Operations if the Door is Opened
- Large Laminated Glass Viewing Window
- Hammertone Finish
- Only 240V Power Required
- Heavy Duty Rubber Gauntlets
- Two Dust Collection Options Available:  
Reverse Pulse 500CFM or  
Drum Type Filter 500CFM
- Pneumatic Foot Control Pedal



# ABRASIVE SUCTION BLAST CABINETS

## CS1000 SUCTION BLAST CABINET

CS1000 Dimensions	
<b>Overall (mm)</b>	2200 H x 1050 W x 650 D
<b>Work Chamber (mm)</b>	1010 H x 1000 W x 600 D
<b>Door (mm)</b>	850 H x 500 W
<b>Dust Collection Method</b>	300 CFM - 60L Capacity Drum Type Only

ABSS MODEL CS1000	
	1A-A201100
	60L Drum Type Dust Collector 300 CFM Capacity
<b>Replacement Cartridge</b>	1C-FILTER1000
<b>Power Requirements</b>	240V, 3 Pin, 10 Amp Supply
<b>Minimum Air Required @ 50PSI</b>	15 CFM Using an A930405 Suction Blast Gun c/w 1/8" (3.2mm) Air Jet



All ABSS Suction Blast Cabinets are fitted with the A930405 Suction Blast Gun. See Page 63 For Standard Air Jet/Blast Nozzle Combination Available

### SUCTION GUN

1C-A930405	ABSS Suction Gun Assembly
1C-T930401-2	Air Jet 1/8" (3.2mm)
1C-ABSSAT5	AT Blast Nozzle 5/16" (8mm)



## CS1200 SUCTION BLAST CABINET

### CS1200 Dimensions

<b>Overall (mm)</b>	2200 H x 1250 W x 1000 D
<b>Work Chamber (mm)</b>	850 H x 1200 W x 900 D
<b>Door (mm)</b>	775 H x 750 W
<b>Dust Collection Method</b>	Reverse Pulse 500 CFM or 200L Drum Type

### ABSS MODEL CS1200

1A-A201102

200L Drum Type Dust Collector  
500 CFM Capacity

**Replacement Cartridge** 6B-A460

**Power Requirements** 240V, 3 Pin, 10 Amp Supply

**Minimum Air Required @ 50PSI** 15 CFM Using an A930405 Suction Blast Gun c/w 1/8" (3.2mm) Air Jet



### ABSS MODEL CS1200RP

1A-A201103

500 CFM Manual Reverse Pulse Dust Collector

**Replacement Cartridge** 6B-A460

**Power Requirements** 240V, 3 Pin, 10 Amp Supply

**Minimum Air Required @ 50PSI** 15 CFM Using an A930405 Suction Blast Gun c/w 1/8" (3.2mm) Air Jet



## CS1500 SUCTION BLAST CABINET

CS1500 Dimensions	
<b>Overall (mm)</b>	2300 H x 1600 W x 1400 D
<b>Work Chamber (mm)</b>	1100 H x 1500 W x 1200 D
<b>Door (mm)</b>	1025 H x 1050 W
<b>Dust Collection Method</b>	Reverse Pulse 500 CFM or 200L Drum Type

ABSS MODEL CS1500	
	1A-A201105
	200L Drum Type Dust Collector
	500 CFM Capacity
<b>Replacement Cartridge</b>	6B-A460
<b>Power Requirements</b>	240V, 3 Pin, 10 Amp Supply
<b>Minimum Air Required @ 50PSI</b>	15 CFM Using an A930405 Suction Blast Gun c/w 1/8" (3.2mm) Air Jet



ABSS MODEL CS1500RP	
	1A-A201106
	500 CFM Manual Reverse Pulse Dust Collector
<b>Replacement Cartridge</b>	6B-A460
<b>Power Requirements</b>	240V, 3 Pin, 10 Amp Supply
<b>Minimum Air Required @ 50PSI</b>	15 CFM Using an A930405 Suction Blast Gun c/w 1/8" (3.2mm) Air Jet



## CS1800 SUCTION BLAST CABINET

### CS1800 Dimensions

<b>Overall (mm)</b>	2200 H x 1900 W x 1300 D
<b>Work Chamber (mm)</b>	1100 H x 1800 W x 1200 D
<b>Door (mm)</b>	1025 H x 1050 W
<b>Dust Collection Method</b>	Reverse Pulse 500 CFM or 200L Drum Type

### ABSS MODEL CS1800

1A-A201108

200L Drum Type Dust Collector  
500 CFM Capacity

**Replacement Cartridge** 6B-A460

**Power Requirements** 240V, 3 Pin, 10 Amp Supply

**Minimum Air Required @ 50PSI** 15 CFM Using an A930405 Suction Blast Gun c/w 1/8" (3.2mm) Air Jet



### ABSS MODEL CS1800RP

1A-A201109

500 CFM Manual Reverse Pulse Dust Collector

**Replacement Cartridge** 6B-A460

**Power Requirements** 24V, 3 Pin, 10 Amp Supply

**Minimum Air Required @ 50PSI** 15 CFM Using an A930405 Suction Blast Gun c/w 1/8" (3.2mm) Air Jet



## SUCTION BLAST - AIR REQUIREMENTS TECHNICAL INFORMATION

Nozzle Jet Combination	Suction Blast Gun Nozzle Data								Air Required
	Pressure At The Blast Nozzle (PSI)								
	30	40	50	60	70	80	90	100	
5/16" (18mm) Blast Nozzle, 1/8" (3.2mm) Air Jet	10	12	15	17	19	21	23	26	Air (CFM)
3/8" (9.5mm) Blast Nozzle, 3/16" (4.8mm) Air Jet	18	22	26	30	35	40	43	45	Air (CFM)

*Disclaimer: The figures stated in the above chart are intended as a reference only.*

## SUCTION BLAST CABINET OPTIONAL UPGRADES

### CS1000 OPTIONAL UPGRADES

1A-A201132-1 500mm Diameter Turntable

### CS1200/RP OPTIONAL UPGRADES

1A-A201132-2 630mm Diameter Turntable

1B-A201130 500kg Track and 630mm Diameter Roll In Table

1B-A201133-1 Tumble Basket 285mm Diameter x 200mm Deep

### CS1500/RP OPTIONAL UPGRADES

1B-A201125-1 1500mm Operator Platform

1A-A201132-3 1000mm Diameter Turntable

1B-A201129 500kg Track and 1000mm Diameter Roll In Table

1B-A201133-2 Tumble Basket 380mm Diameter x 300mm Deep

### CS1800/RP OPTIONAL UPGRADES

1B-A201125-2 1800mm Operator Platform

1A-A201132-3 1000mm Diameter Turntable

1B-A201129 500kg Track and 1000mm Diameter Roll In Table

1B-A201133-2 Tumble Basket 380mm Diameter x 300mm Deep

# ABRASIVE PRESSURE BLAST CABINETS

## ABSS PRESSURE BLAST CABINET FEATURES

- Manufactured using Heavy Gauge Steel Plate
- Two (2) 18 Watt Fluro Lights
- Door Interlocks Design to Cease Blasting Operations if the Door is Opened
- Large Laminated Glass Viewing Window
- Hammertone Finish
- Only 240V Power Required
- Heavy Duty Rubber Gauntlets
- Two Dust Collection Options Available: Reverse Pulse 500CFM (pictured) or 200L Drum Type Filter 500CFM
- Pneumatic Foot Control Pedal
- Blast Vessel 20L Capacity



## WANT TO CONVERT YOUR ABSS SUCTION BLAST CABINET TO A PRESSURE BLAST CABINET?

### PRESSURE BLAST CONVERSION KIT

**Includes:**

- 20L Pressure Pot
- Fitted Blast Hose Assembly
- AT3 Straight Bore Blast Nozzle
- Rubber Sealing Band Skirt
- Two (2) Skirt Clamps

Not Available for Model CS1000



1A-A201127 Pressure Blast Conversion Kit



## ABRASIVE PRESSURE BLAST CABINETS

### CP800 PRESSURE BLAST CABINET

#### CP800 Dimensions

<b>Overall (mm)</b>	2200 H x 850 W x 900 D
<b>Work Chamber (mm)</b>	900 H x 800 W x 800 D
<b>Door (mm)</b>	825 H x 650 W
<b>Dust Collection Method</b>	Reverse Pulse 500 CFM or 200L Drum Type

#### ABSS MODEL CP800

1A-A201111

200L Drum Type Dust Collector

500 CFM Capacity

**Replacement Cartridge** 6B-A460

**Power Requirements** 240V, 3 Pin, 10 Amp Supply

**Minimum Air Required @ 60PSI** 30 CFM - Using a #3 3/16" (4.8mm) Blast Nozzle



#### ABSS MODEL CP800RP

1A-A201112

500 CFM Manual Reverse Pulse Dust Collector

**Replacement Cartridge** 6B-A460

**Power Requirements** 240V, 3 Pin, 10 Amp Supply

**Minimum Air Required @ 60PSI** 30 CFM - Using a #3 3/16" (4.8mm) Blast Nozzle



## CP1200 PRESSURE BLAST CABINET

### CP1200 Dimensions

<b>Overall (mm)</b>	2200 H x 1250 W x 1000 D
<b>Work Chamber (mm)</b>	850 H x 1200 W x 900 D
<b>Door (mm)</b>	775 H x 750 W
<b>Dust Collection Method</b>	Reverse Pulse 500 CFM or 200L Drum Type

### ABSS MODEL CP1200

1A-A201114

200L Drum Type Dust Collector  
500 CFM Capacity

**Replacement Cartridge** 6B-A460

**Power Requirements** 240V, 3 Pin, 10 Amp Supply

**Minimum Air Required @ 60PSI** 30 CFM - Using a #3 3/16" (4.8mm) Blast Nozzle

### ABSS MODEL CP1200RP

1A-A201115

500 CFM Manual Reverse Pulse Dust Collector

**Replacement Cartridge** 6B-A460

**Power Requirements** 240V, 3 Pin, 10 Amp Supply

**Minimum Air Required @ 60PSI** 30 CFM - Using a #3 3/16" (4.8mm) Blast Nozzle



## CP1500 PRESSURE BLAST CABINET

CP1500 Dimensions	
<b>Overall (mm)</b>	2300 H x 1600 W x 1400 D
<b>Work Chamber (mm)</b>	1100 H x 1500 W x 1200 D
<b>Door (mm)</b>	1025 H x 1050 W
<b>Dust Collection Method</b>	Reverse Pulse 500 CFM or 200L Drum Type

ABSS MODEL CP1500	
	1A-A201117
	200L Drum Type Dust Collector 500 CFM Capacity
<b>Replacement Cartridge</b>	6B-A460
<b>Power Requirements</b>	240V, 3 Pin, 10 Amp Supply
<b>Minimum Air Required @ 60PSI</b>	30 CFM - Using a #3 3/16" (4.8mm) Blast Nozzle

ABSS MODEL CP1500RP	
	1A-A201118
	500 CFM Manual Reverse Pulse Dust Collector
<b>Replacement Cartridge</b>	6B-A460
<b>Power Requirements</b>	240V, 3 Pin, 10 Amp Supply
<b>Minimum Air Required @ 60PSI</b>	30 CFM - Using a #3 3/16" (4.8mm) Blast Nozzle



## CP1800 PRESSURE BLAST CABINET

### CP1800 Dimensions

<b>Overall (mm)</b>	2700 H x 1900 W x 1300 D
<b>Work Chamber (mm)</b>	1100 H x 1800 W x 1200 D
<b>Door (mm)</b>	1025 H x 1050 W
<b>Dust Collection Method</b>	Reverse Pulse 500 CFM or 200L Drum Type

### ABSS MODEL CP1800

1A-A201117

200L Drum Type Dust Collector

500 CFM Capacity

**Replacement Cartridge** 6B-A460

**Power Requirements** 240V, 3 Pin, 10 Amp Supply

**Minimum Air Required @ 60PSI** 30 CFM - Using a #3 3/16" (4.8mm) Blast Nozzle



### ABSS MODEL CP1800RP

1A-A201118

500 CFM Manual Reverse Pulse Dust Collector

**Replacement Cartridge** 6B-A460

**Power Requirements** 240V, 3 Pin, 10 Amp Supply

**Minimum Air Required @ 60PSI** 30 CFM - Using a #3 3/16" (4.8mm) Blast Nozzle



## PRESSURE BLAST CABINET OPTIONAL UPGRADES

### CP800/RP OPTIONAL UPGRADES

1A-A201132-2	630mm Diameter Turntable
1B-A201130-1	500kg Track and 500mm Diameter Roll In Table
1B-A201133-1	Tumble Basket 285mm Diameter x 200mm Deep

### CP1200/RP OPTIONAL UPGRADES

1A-A201132-3	630mm Diameter Turntable
1B-A201130-2	500kg Track and 630mm Diameter Roll In Table
1B-A201133-1	Tumble Basket 285mm Diameter x 200mm Deep

### CP1500/RP OPTIONAL UPGRADES

1B-A201125-1	1500mm Operator Platform
1A-A201132-3	1000mm Diameter Turntable
1B-A201129	500kg Track and 1000mm Diameter Roll In Table
1B-A201133-2	Tumble Basket 380mm Diameter x 300mm Deep

### CP1800/RP OPTIONAL UPGRADES

1B-A201125-2	1800mm Operator Platform
1A-A201132-3	1000mm Diameter Turntable
1B-A201129	500kg Track and 1000mm Diameter Roll In Table
1B-A201133-2	Tumble Basket 380mm Diameter x 300mm Deep

## DO YOU HAVE A CUSTOM DESIGNED BLAST CABINET REQUIREMENT?

ABSS will Expertly Engineer and Design the Perfect Solution. Call our Qualified Engineers Now!



## OPTIONAL UPGRADES AND ACCESSORIES

### TURN TABLES

- 1B-A201132-1 500mm Diameter Turntable Suits CP800 and CS1000
- 1B-A201132-2 630mm Diameter Turntable Suits CP/CS1200 Blast Cabinet
- 1B-A201132-3 1000mm Diameter Turntable Suits CP/CS 1500 and 1800



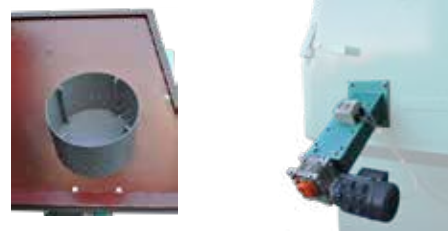
### TRACK AND TROLLEYS

- 1B-A201130-1 500kg Track and 500mm Diameter Roll In Table Suits CP800 Blast Cabinets
- 1B-A201130-2 500kg Track and 630mm Diameter Roll In Table Suits CS/CP1200 Blast Cabinets
- 1B-A201129 500kg Track and 1000mm Diameter Roll In Table Suits CP/CS1500 and 1800 Blast Cabinets



### TUMBLE BASKETS

- 1B-A201133-1 Tumble Basket 285mm Diameter x 200mm Deep Suits CP800, CS1000, CS/CP1200 Blast Cabinets
- 1B-A201133-2 Tumble Basket 380mm Diameter x 300mm Deep Suits CS/CP1500 and CS/CP1800 Blast Cabinets



### OPERATOR WORK PLATFORMS

- 1B-A201125-1 1500mm Operator Work Platform Suits CP/CS1500
- 1B-A201125-2 1800mm Operator Work Platform Suits CP/CS1800



### REPLACEMENT PERFORATED SCREEN FLOORS

- 1C-S900418-11 Suits 800mm Wide Cabinet CP800
- 1C-S900418-16 Suits 1000mm Wide Cabinet CS1000
- 1C-S900418-12 Suits 1200mm Wide Cabinet CS/CP1200
- 1C-S900418-28 Suits 1500mm Wide Cabinet CS/CP1500
- 1C-S900418-32 Suits 1800mm Wide Cabinet CS/CP1800



## REVERSE PULSE (RP) DUST COLLECTOR

Includes Automatic Pulse (Suits CP800, CS/CP1200, CS/CP1500, and CS/CP1800)

6A-A940185-1	RP 500CFM Dust collector - 100mm Spigot - 10L Drum
6A-A940185-2	RP 500CFM Dust collector - 150mm Spigot - 10L Drum
6A-A940185-4	RP 500CFM Dust collector - 100mm Spigot - 20L Drum
6A-A940185-5	RP 500CFM Dust collector - 150mm Spigot - 20L Drum
6A-A940185-6	RP 500CFM Dust collector - 100mm Spigot - 60L Drum
6A-A940185-7	RP 500CFM Dust collector - 150mm Spigot - 60L Drum
6B-A460	Replacement Filter Cartridge



## 300CFM DUST COLLECTOR - DRUM STYLE

6A-A200823	300CFM Dust Collector 60L Capacity Suits CS1000
1C-FILTER1000	Replacement Filter Cartridge



## 500CFM DUST COLLECTOR - DRUM STYLE

6A-A201122	500CFM Dust Collector 200L Capacity Suits CP800, CS/CP1200, CS/CP1500, and CS/CP1800
6B-A460	Replacement Filter Cartridge

## SOLENOID TIMER

Suits Model 6A-A201123 Dust Collector  
Controls the Pulse Timing Frequency as well as the duration

1C-T201158 Solenoid Timer



## AUTOMATIC PULSE TIMER

Suits 6A-A940185 (240V Required)  
Convert your Manual Pulse Cleaning System  
to Automatic Pulse Cleaning. This unit Controls the Pulse  
Timing Frequency as well as the duration

1B-A201128 Automatic Pulse Timer to Suit 6A-A940185 series  
(240V Required)



## OPERATOR FOOT PEDAL - PNEUMATIC

1C-A201825 Operator Foot Pedal - Pneumatic  
(Suits all ABSS Blast Cabinets)





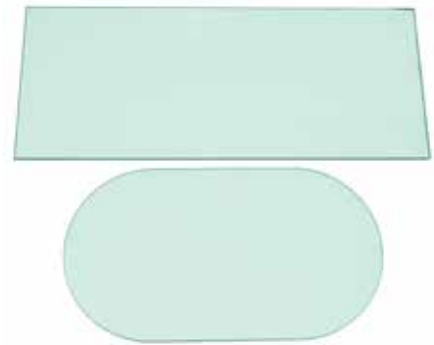
## DOOR INTERLOCK

1C-A202190	Door Interlock and Service Kit
1C-VM230-02-05-A	Mechanical Valve for Door Interlock
1C-A980160-1	Door Interlock Kit Prevents Blasting While the Door is Open
1C-DCV12	Replacement Check Valve



## REPLACEMENT GLASS WINDOWS

1C-G900520-1	Oval Window 458mm x 254mm
1C-G900520-16	Rectangle Window 620mm x 260mm
1C-G900520-1	Rectangle Window 905mm x 295mm
1C-ABSW-97	Rubber Window Seal



## RUBBER BLAST CABINET GLOVES

1C-GLOVE27SB	Rubber Blast Cabinets Gloves 250mm Diameter x 680mm Long (Suits All ABSS Blast Cabinets)
1C-GLOVE27SBS	Rubber Blast Cabinet Gloves 200mm diameter
1C-GLCLAMP	Clamp to Suit Blast Cabinet Gloves (Suits All ABSS Blast Cabinets)



## BLAST POT SEAL SKIRT AND CLAMPS

Suits ABSS Pressure Blast Cabinets

1C-POTSEAL	Rubber Skirt Sealing Band
1C-PSCLAMP	Sealing Band Clamps



## MINI MICRO ABRASIVE METERING VALVE

Used on ABSS Auto Exhaust Blast Pots Models ABS7 and ABS40

1C-A201390	3/4" BSP x 3/4" BSP Model
1C-T201576	Base 3/4" BSP Tee Piece
1C-A201453	Service Kit



## STRAIGHT BORE BLAST NOZZLES

Tungsten Carbide 3/4" Thread

4F-ABSSAT2	3/16" (3.2mm) Orifice 45mm Overall Length
4F-ABSSAT3	3/16" (4.8mm) Orifice 45mm Overall Length
4F-ABSSAT4	1/4" (6.4mm) Orifice 45mm Overall Length
4F-ABSSAT5	5/16" (8mm) Orifice 45mm Overall Length



## ALUMINIUM NOZZLE HOLDER

1C-NH1/2	Aluminium Nozzle Holder 3/4" Thread Suits 1C-ABHS13 27mm OD Blast Hose and the 1C-ABSSAT Range of Blast Nozzles
1C-NH20GSKT	Nozzle Gasket Rubber (Suits NH-20 Nozzle Holder)



## COUPLING ADAPTOR

1C-BH20	Blast Hose Claw Coupling Suits DuraBlast Standard 13mm ID x 27mm OD hose
---------	---



## REPLACEMENT PARTS

### ABSS SUCTION GUN

1C-A900300 ABSS Suction Gun - High Performance  
Standard Configuration:  $\frac{3}{16}$ " Air Jet x  $\frac{3}{8}$ " Nozzle

#### AVAILABLE CONFIGURATIONS:

1C-A900309-4 Air Jet  $\frac{1}{8}$ " (3.2mm)

1C-A900310-4 Tungsten Carbide Blast Nozzle  $\frac{1}{4}$ " (6.4mm)

1C-A900309-6 Air Jet  $\frac{3}{16}$ " (4.8mm)

1C-A900310-6 Tungsten Carbide Blast Nozzle  $\frac{3}{8}$ " (9.5mm)



### ABSS SUCTION GUN ASSEMBLY

1C-A930405 ABSS Suction Gun Assembly  
Standard Configuration:  $\frac{1}{8}$ " Air Jet x  $\frac{5}{16}$ " Nozzle

#### AVAILABLE CONFIGURATIONS:

1C-T930401-2  $\frac{1}{8}$ " (3.2mm) Air Jet

1C-T930401-5  $\frac{3}{16}$ " (5mm) Air Jet

4F-ABSSAT5 AT Tungsten Carbide Blast nozzle  $\frac{5}{16}$ " (8mm) Orifice

4F-ABSSAT6 AT Tungsten Carbide Blast nozzle  $\frac{3}{8}$ " (9.5mm) Orifice



### ABSS DURABLAST PREMIUM BLAST HOSE

Suits All ABSS Pressure Blast Cabinets  
Lightweight and Flexible

Internal Dimension  $\frac{1}{2}$ " (12.5mm)  
Outside Dimension 27mm

Standard Length - 20m  
Cut Lengths Available

4H-BHS1327 ABSS Durablast Premium Blast Hose



## ABSS PREMIUM QUALITY SUCTION BLAST CABINET BLAST HOSE

Lightweight and Flexible

Internal Dimension 1/2" (12.5mm)

Outside Dimension 7/8" (22mm)

Standard Length - 10m

Cut Lengths Available

1C-ABH13SUCT ABSS Premium Quality Suction Blast Cabinet Blast Hose

## PVC AIR HOSE

Suits ABSS Suction Blast Cabinets

1C-AHPVC13

PVC Air Hose 1/2" (12.5mm) Yellow  
Roll Sizes 20m, 100m, and 200m  
Other Sizes Available on Request  
include 8mm and 10mm

## COMPRESSED AIR BLOW DOWN GUN

1C-A201131

Compressed Air Blow Down Gun  
Complete with 1m Fitted PCV Air Hose

## FILTER REGULATOR

4E-AW40-04H-A

Filter Regulator 1/2" BSP  
c/w 1/4" Rear Entry Gauge 0-1000kpa

## BLAST CABINET DOOR SEAL

1C-DS246

Blast Cabinet Sponge Rubber Door Seal  
24mm wide x 6mm thick, Roll Size 10m



# WET BLASTING EQUIPMENT

## ECOQUIP VAPOR BLAST™ SYSTEM

### EcoQuip® are the International Market Leader in the Vapor Abrasive Industry

Models available include Stand-Alone Unity sturdily housed in Stainless Steel Crash Frames and Trailer Mounted Systems complete with built-in Compressors. All systems are rippied with a Fully Galvanized Blast Vessels inside and out and are Fully Compliant to Australian Standards AS1210. Electric Deadman Ready and Pneumatic Deadman fitted as standard. EcoQuip Systems use Blast Hoses, Fittings and Blast Nozzles.

#### Major Benefits Include:

- Up to 75% Less Abrasive Media used when compared to Dry Abrasive Blasting Methods
- Uses only up to 1L of Water per Minute
- More than 92% of Dust is Suppressed
- Blast Hose and Nozzles last up to 4-6 times longer when compared to Dry Abrasive Blasting Methods

#### ***\*Slow Start Safety Feature***

The EcoQuip "Slow Start" Safety Feature allows the Operator to Control the Time it takes to get from 30psi to full Blast Pressure.



**MODEL NO. EQp**  
**FEATURES:**

Fully Adjustable "Slow Start"

Fully Portable Trolley and Wheels

2ft<sup>3</sup> A-Coat and Powder Coat Blast Pot  
(AS1210 Australian Standards Compliant)

Pneumatic Deadman as Standard

**BENEFITS**

Blasts up to 90 minutes between refills

Reduced Run-Off (Less than 1L Water per Minute)

Suppressed up to 92% of Airborne Particles

Less Waste Material to Dispose  
(Reduce Transport and Disposal Costs)

Effective in Rain and High Humidity

**EcoQuip® Portable Units**  
**Model EQp**

**Standard System Includes:**

- 55L (2ft<sup>3</sup>) Vessel
- 175psi (12.1 Bar) Design Pressure
- Pneumatic Deadman Controls, 15m Twin Line Hose and Deadman Handle
- 15m Blast Hose
- No.5 5/16" (8mm) HP Blast Nozzle

E-EQp      EQp EcoQuip2 – Vapor Blaster



## MODEL NO. EQm

### FEATURES:

- Fully Adjustable "Slow Start"
- Fully Portable Trolley and Wheels
- 2.1ft<sup>3</sup> A-Coat and Powder Coat Blast Pot (AS1210 Australian Standards Compliant)
- Pneumatic Deadman as Standard
- Electric Deadman Ready
- Adjustable Blast Pressures 30psi - 110psi

### BENEFITS

- Reduced Media Consumption (25-75kg of Media per Hour)
- Reduced Run-Off (Less than 1L Water per Minute)
- Suppressed up to 92% of Airborne Particles
- Less Waste Material to Dispose (Reduce Transport and Disposal Costs)
- Effective in Rain and High Humidity

## EcoQuip® Portable Units Model EQm

### Standard System Includes:

- Pneumatic Deadman System
- 20m 2548 Fitted Blast Hose
- 20m Pneumatic Twinline Deadman Hose
- No.7 7/16" (11mm) Venturi Blast Nozzle
- 7.6m Electric Deadman Battery Extension Cord
- Blast Pressure Range 30psi - 110psi

E-EQ100M      EcoQuip Vapor Blast System Model EQm  
(Requires Minimum 185cfm)



## MODELS NO. EQs and EQs Elite

### FEATURES:

Fully Adjustable "Slow Start"

Mild Steel Crash Frame (EQs)

Sturdy Stainless Steel Crash Frame (EQs Elite)

6.5ft<sup>3</sup> A-Coat and Powder Coat Blast Pot  
(AS1210 Australian Standards Compliant)

Pneumatic Deadman as Standard

Electric Deadman Ready

437L UV Stable Poly Tank

Adjustable Blast Pressures 30psi - 110psi

### BENEFITS

Reduced Media Consumption (25-75kg of Media per Hour)

Reduced Run-Off (Less than 1L Water per Minute)

Suppressed up to 92% of Airborne Particles

Less Waste Material to Dispose  
(Reduce Transport and Disposal Costs)

Effective in Rain and High Humidity

## EcoQuip® Portable Units

### Model EQs and EQs Elite

#### All Standard System Include:

- Pneumatic Deadman System
- 20m Pneumatic Twinline Deadman Hose
- 7.6m Electric Deadman Battery Extension Cord

EcoQuip Vapor Blast System Model EQs  
(Requires Minimum 185cfm)

E-EQs

- 20m 25x48 Fitted Blast Hose
- No.7 7/16" (11mm) Ventury Blast Nozzle
- Blast Pressure Range 30psi - 110psi

EcoQuip Vapor Blast System Model EQs Elite  
(Requires Minimum 375cfm)

E-EQs Elite

- 20m 32x48 Fitted Blast Hose
- No.8 1/2" (12.7mm) Ventury Blast Nozzle
- Adjustable Blast Pressure Range 30psi - 130psi



FOR FURTHER DETAILS PLEASE CONTACT US ON 1300 727 240



## MODELS NO. EQ200T and EQ400T

### FEATURES:

- Fully Adjustable "Slow Start"
- Sturdy Stainless Steel Crash Frame
- 6.5ft<sup>3</sup> A-Coat and Powder Coat Blast Pot (AS1210 Australian Standards Compliant)
- Pneumatic Deadman as Standard
- Electric Deadman Ready
- 437L UV Stable Poly Tank
- Adjustable Blast Pressures 30psi - 110psi

### BENEFITS

- Reduced Media Consumption (25-75kg of Media per Hour)
- Reduced Run-Off (Less than 1L Water per Minute)
- Suppressed up to 92% of Airborne Particles
- Less Waste Material to Dispose (Reduce Transport and Disposal Costs)
- Effective in Rain and High Humidity

## EcoQuip® Portable Units Model EQ200T and EQ400T

### All Standard System Include:

- Pneumatic Deadman System
- 20m Pneumatic Twinline Deadman Hose
- 7.6m Electric Deadman Battery Extension Cord

E-EQ200T	<p>EcoQuip Vapor Blast System Model EQ200T (Requires Minimum 185cfm)</p> <ul style="list-style-type: none"> <li>- 20m 25x48 Fitted Blast Hose</li> <li>- No.7 7/8" (11mm) Ventury Blast Nozzle</li> <li>- Blast Pressure Range 30psi - 110psi</li> </ul>
E-EQ400T	<p>EcoQuip Vapor Blast System Model EQ400T (Requires Minimum 375cfm)</p> <ul style="list-style-type: none"> <li>- 20m 32x48 Fitted Blast Hose</li> <li>- No.8 1/2" (12.7mm) Ventury Blast Nozzle</li> <li>- Adjustable Blast Pressure Range 30psi - 130psi</li> </ul>



# AIR PREPARATION MOISTURE SEPARATORS

## MOD-U-BLAST® DRYPRO MOISTURE SEPARATORS



### Features:

- High Volume and Maintenance Free
- 150psi Rated Vessel
- AS1210 Australian Standards Compliant
- Stainless Steel De-Mister Pads (Internally Mounted)
- Single or Multi Outlet

A-22520-1	800CFM Capacity - One (1) Outlet
A-22520-2	800CFM Capacity - Two (2) Outlet
A-22520-3	800CFM Capacity - Three (3) Outlet
A-22520-4	800CFM Capacity - Four (4) Outlet
A-22620-2	1600CFM Capacity - Two (2) Outlet
A-22620-3	1600CFM Capacity - Three (3) Outlet
A-22620-4	1600CFM Capacity - Four (4) Outlet
A-22620-5	1600CFM Capacity - Five (5) Outlet



## FILTER REGULATORS

4E-AW40-04H-A	½" BSP (15mm) Filter Regulator Suits ABSS Blast Pot Model ABS20
---------------	--

## DRY GAUGES ONLY

4I-G40-K10-01	40mm ¼" Rear Entry 0-145psi/1000kpa
4I-G40-K10-02	40mm ¼" Rear Entry 0-145psi/1000kpa



## MOISTURE SEPARATORS

Suits US Models ABS100, ABS185  
and All ABSS Hi-Flow Blast Pots

4E-AF60-10	1" BSP (25mm) Moisture Trap Suits Blast Pots ABS40
4E-AF800-14	1½" BSP (40mm) Moisture Trap Suits Blast Pots ABS80, ABS140 and ABS174

# INSTRUMENTATION

## SPECIAL GAUGES

### HYPODERMIC NOZZLE PRESSURE GAUGE

- T-21148 Hypodermic Nozzle Pressure Gauge 0-160psi  
c/w Three (3) Needles, Adaptor and Case
- T-21149 Spare Hypodermic Needles (packets of 12)



### BLAST NOZZLE ORIFICE GAUGE

- T-30000 Nozzle Orifice Gauge



### ALMEN TEST STRIPS

Packets of 50

- T-ASA-1 Type A, Almen Strips - Grade 1
- T-ASC-1 Type C, Almen Strips - Grade 1
- T-ASN-1 Type N, Almen Strips - Grade 1
- T-ASA-2 Type A, Almen Strips - Grade 2
- T-ASC-2 Type C, Almen Strips - Grade 2
- T-ASN-2 Type N, Almen Strips - Grade 2



### ALMEN GAUGE

- T-AG2 #2 Almen Gauge



# WAGNER AIR SPRAY EQUIPMENT

## AIR POWERED SPRAYERS



### TITAN® POWRCOAT™ AIR POWERED SPAYER

**Features:**

- Dynamic Self-Adjusting Packings Ultra-Durable Hard Chrome Piston and Cylinder
- Heavy Duty Hose Wrap and Gun Holder
- Fully Adjustable Lubricator
- Heavy-Duty Crane Hook
- High-Efficiency Anti-Icing Motor
- AirCare™ System:
  - Complete FRL (Filter, Regulator, Lubricator) standard with every PowrCoat™
  - Eliminates motor icing
  - Automatic draining moisture trap
  - Easy access air filter and lubrication reservoir
- Heavy Duty Metal Shroud to protect FRL and air motor
- High Capacity Outlet Filter
- Integrated Wall Mount Bracket
- Large, 16" Pneumatic Tires
- Severe Service™ Pump
- Lift Handles, Heavy Duty Cart, Mounting Bracket



MODEL	630	1045	1064	1072
Air Motor Size (Inches)	6"	10"	10"	10"
Ratio	30:1	45:1	64:1	72:1
Stroke Length (Inches)	4"	4.75"	4.75"	4.75"
Maximum Operating Pressure (PSI)	3480 PSI	4500 PSI	6400 PSI	7200 PSI
Maximum Volume Flow - 60CPM	5.7 L/min	15.14 L/min	11.36 L/min	10 L/min
Fluid Output Per Cycle (cc)	61cc	253.8cc	188.5cc	167.1cc
Configuration	Cart/Wall	Cart/Wall	Cart/Wall	Cart/Wall
Warranty	4 years	4 years	4 years	4 years

FOR FURTHER DETAILS PLEASE CONTACT US ON 1300 727 240

## AIR SPRAY GUNS

### TOMCAT 100C (GENERAL PURPOSE)

The T100C is an economical general purpose conventional air spray gun for spraying a wide range of coatings. Designed for production use, the TOMCAT is perfect for all coatings from thin to thick, stains to glue. Can also be used with internal mix nozzles as well as carbide tipped fluid nozzles for abrasives. This gun features a self-adjusting needle packing, inexpensive nozzle replacement and rugged construction.



### PANTHER 200Z (ZINC RICH)

The P200Z is a rugged, general purpose, conventional air spray gun designed for spraying zinc-rich coatings. Our P200Z has a Delrin tipped fluid nozzle to prevent plating and a unique leather / Teflon packing arrangement that increases your spraying time before the gun needs to be cleaned. The body and air cap are Teflon anodized to aid in clean-up and extend the life of the gun. This gun comes standard with air-adjusting valve, stainless steel fluid passages and heavy-duty needle return spring.



## BINKS DX200

### AIR OPERATED 1:1 RATIO DIAPHRAGM PUMPS

#### Features:

Self-priming and perfect for use with ALL TYPES of spray gun technologies including Conventional, Compliant Trans-Tech®, HVLP, LVLP and low pressure Electrostatic guns.

- **Rugged Construction and Universal Material Compatibility.** Available in Aluminium and Stainless Steel to handle a wide variety of fluids.

- **Extended Service Life and Zero Leakage.** Bonded PTE diaphragm is more flexible, removing mechanical seals or packings, which means an extended service life.

- **Consistent Fluid Delivery.** unique "no-crease" diaphragm design and "built-in" fluid regulator ensures a consistent pressure output and significantly reduced pulsation.

- **Pumps Shear-Sensitive Materials.** Low internal velocities and gentle pumping action does not shear coatings.

- **Fast and Easy Servicing.** Pump body provides unobstructed access to air valve and diaphragms for fast and easy maintenance without the need to dismount the pump.



## RANSFLEX RX 45KV / RFX 65KV

### LOW PRESSURE AIR ATOMISING ELECTROSTATIC SPRAY

#### Features:

- Superior atomization and transfer efficiency
- Lighter weight with superior ergonomic balance
- Quick and easy to set up "straight from the box"
- Lower running costs and maintenance
- For most solvent based paints and materials
- Ergonomic fit, feel, balance and controls
- Redesign sleek and smooth exterior
- Triple Turbine Protection
- Ergonomic handle profile and comfortable trigger
- Meets ATEX-CE/FM/GSA



## ADVANCE HD CONVENTIONAL PRESSURE, GRAVITY AND SUCTION MANUAL SPRAY GUNS

### Features:

- Wide range of conventional atomisation air caps provide a superior sprayed finish
- Robust, Lightweight and work friendly design for High Demand outputs
- Stainless Steel tips, needles and fluid passageways as standard
- Contoured handle design - Greatly reduces RSi and operator fatigue
- CE marked and fully ATEX approved.

The comprehensive Advance HD (High Demand) spray gun range ensures there's a DeVilbiss spray gun to suit all types of industrial spray finishing applications.

Light weight with a lighter trigger action and increased finger room. Advance HD is perfectly balanced and naturally comfortable thanks to the fit and feel of the contoured handle design. It greatly reduces operator fatigue and significantly lessens the chances of RSi or finger problems.



## ADVANCE HD HVLP AND TRANS-TECH PRESSURE, GRAVITY AND SUCTION MANUAL SPRAY GUNS

### Features:

- Robust, Lightweight and work friendly design for High Demand outputs
- Balanced air valve design for lighter trigger pull and improved air flow
- Trans-Tech Compliant and HVLP air caps provide superior finish with the best possible paint savings and transfer efficiency
- Contoured handle design - Greatly reduces RSi and operator fatigue
- Stainless Steel tips, needles and fluid passageways as standard
- CE marked and fully ATEX approved.

The comprehensive Advance HD (High Demand) spray gun range ensures there's a DeVilbiss spray gun to suit all types of industrial spray finishing applications.



# GRACO AIR SPRAY EQUIPMENT

## HIGH PRESSURE SPRAY EQUIPMENT

### TRITON

#### AIR OPERATED DIAPHRAGM SPRAY PACKAGE

##### Features:

Applies a high quality, decorative finish to wood and metal parts. Triton is a more effective alternative to traditional pressure pots and standard diaphragm pumps.

- **High Quality Finish.** Low pulsation output and smooth pump changeover deliver a consistent spray pattern.
- **Easy-To-Use.** Quick color changes and fast material refills save time and money.
- **Rugged Construction.** Stainless steel or aluminum pump handles a wide variety of fluids.



### KING

#### AIRLESS SPRAYER FOR APPLYING PROTECTIVE COATINGS

Graco airless sprayers have been the industry's preferred brand for over 60 years. When looking for a dependable, durable and rugged single-component protective coatings pump to get the job done.

##### Features:

- **Simple Maintenance.** A factory installed toolbox contains common items that every applicator should have on the job site. Contents include throat seal liquid, air filter element, tool for poppet and air valve, pump filter cap O-rings, pump filter element, spare tip and gun filter.
- **Reduced Icing Potential.** Up to 70% with thermally isolated poppets. The components are easily accessed for service or replacement if needed.
- **Less Pulsation.** With 145% higher intake/exhaust capacity in the air valve compared to NXT™ motors you'll achieve a faster, smoother changeover.
- **Multi-Gun Capabilities.** Graco's powerful new air motor lets you use multiple guns with almost no perceivable pulsation.





## XTR

### AIRLESS SPRAY GUNS

Rugged design to handle the toughest protective coatings.

#### Features:

- Compact design allows for easy maneuverability
- Variety of handle and trigger options
- High quality materials and construction



## XHD RAC SWITCHTIP

Your best choice for spraying high-pressure coatings.

#### Features:

- Saves time - no screwdriver required
- Change tip sizes in seconds - without removing the tip guard housing
- Locking tab ensures tip stays securely in guard



## XTREME-DUTY

### HIGH PRESSURE HOSES

Complete line of durable hoses for all your high-quality spraying.

#### Features:

- Colour-coded by pressure to take the guesswork out of using the right hose
- Durable design meets exacting standards
- Tested and proven to pass quality and performance tests



# ABRASIVE MEDIA

---

## STEEL GRIT G10-G120

**GL Grade** - Loses the sharp edges while blasting, Suitable for Descaling and Surface Preparation.

**GH Grade** - Maximum Hardness. Grit retains its angular edge while blasting

**Packaging:** 25kg and 1 ton (40x25kg) pallet

Stainless Steel Grit Available Upon Request



## CAST STEEL SHOT S70-S780

Most Common Form of Blasting Media used in Turbine Wheel Blast Machines

**Packaging:** 25kg and 1 ton (40x25kg) pallet

Stainless Steel Shot Available Upon Request



## CUT WIRE

Aluminium: Range 0.6mm - 2.5mm

Carbon Steel : Range 0.3mm - 1.2mm

Stainless Steel: Range 0.2mm - 1.2mm

**Packaging:** 25kg and 1 ton (40x25kg) pallet

Conditioned Media Available Upon Request



## CERAMIC BEAD 0.1MM - 2.5MM

Used in Turbine Wheel Blast Machines where the removal of carbon deposits and other impurities are required without damaging the substrate.

**Packaging:** 25kg and 1 ton (40x25kg) pallet



## GARNET ALMANDINE

**Standard Available Grades:**

20/40, 30/60, #80 Mesh

**Packaging:** 25kg and 1 ton (40x25kg) pallet

Other Grades Available Upon Request



## GLASS BEAD COMPACT SPHERES

**Standard Available Grades:**

No.2 (C) Mesh - 425-250 Coarse - Uncoated\*

No.3 (AB) Mesh - 300-180 Medium - Uncoated\*

No.4 (AC) Mesh - 250-150 Medium - Coated

No.5 (AD) Mesh - 225-100 Medium - Uncoated\*

**Packaging:** 25kg and 1 ton (40x25kg) pallet

\*Uncoated beads can be used with Wet Blasting systems



## BROWN FUSED ALUMINIUM OXIDE

Mesh F16 - F220

**Packaging:** 25kg and 1 ton (40x25kg) pallet



## GRANULATED PLASTIC MEDIA UREA AND ACRYLIC

Milspec Media Available Upon Request

**Packaging:** 250lb (114kg) drums and 50lb (23kg) boxes

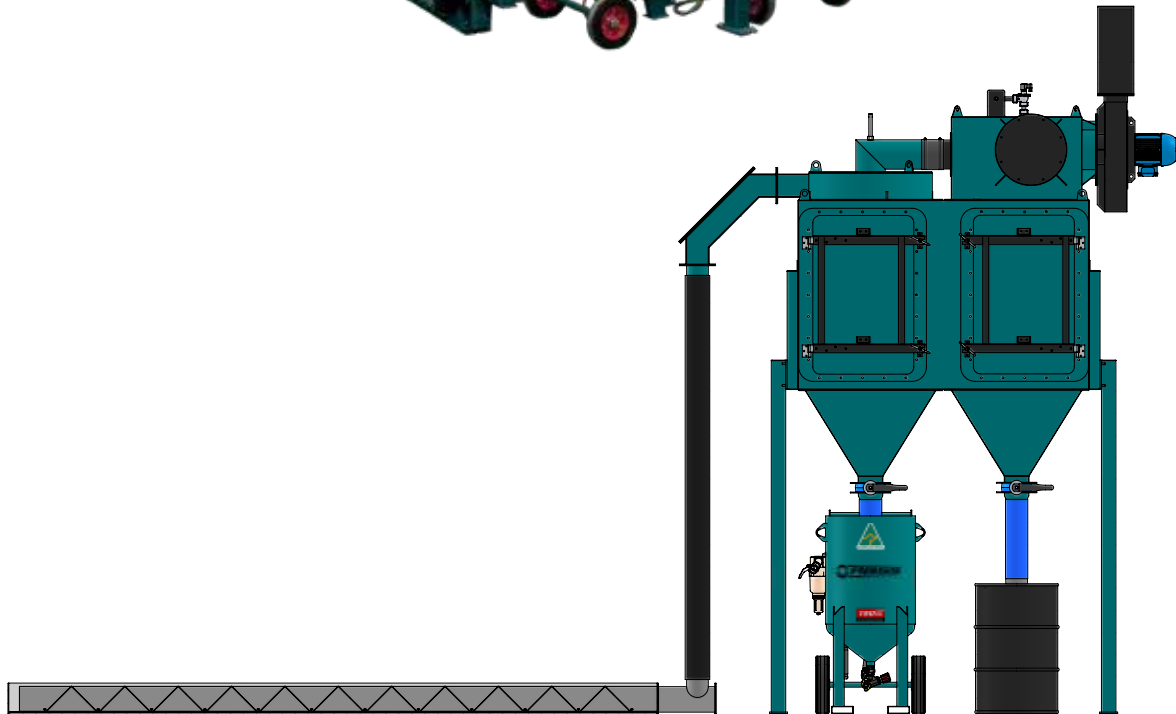
Various Grades Available. Please Contact ABSS  
with your Requirements.



# ABRASIVE BLAST ROOMS

## ABSS PNEUMATIC RECOVERY BLAST ROOM

---



## ABSS PNEUMATIC RECOVERY FLOOR MODULE SYSTEM

---



Three (3) Module ABSS Recovery Floor fitted flush to the Blast Room Floor. Shallow Pits of 280mm are required.



Three (3) Module ABSS Recovery Floor fitted deeper in the Blast Room Floor. This configuration allows for 100% Abrasive Media Recovery.

## THE ABSS PNEUMATIC RECOVERY CONTAINER BLAST ROOM



### RELOCATABLE CONTAINER SYSTEM

Included in the ABSS Pneumatic Abrasive Recovery Blast Room range is the ABSS Hi-Cube Container Blast Room.

Manufactured in Melbourne to Australian Standards and using a NEW 20 foot Shipping Container, the ABSS Container Blast Room has been designed and built to be easily relocatable while still maintaining many of the features of the larger ABSS Rooms.



## WHAT IS A MECHANICAL RECOVER BLAST ROOM?

---

Mechanical Abrasive Recovery Blast Systems are used to recover the Abrasive Media and remove the dust and contaminants using a Bucket Elevator. Feeding the Abrasive Media into this Bucket Elevator, a variety of mechanical methods can be used. Typical methods include Scraper Blade Floors or Vibrating Floors that move the spent Abrasive Media into a central Screw Conveyor that in turn feeds into the Bucket Elevator.

Feeding the Bucket Elevator can also be achieved with strategic placement of the Screw Conveyor/s without the requirement for Scraper or Vibrating Floors.

ABSS Stand alone Bucket Elevator systems can provide an economical option to recovering the spent Abrasive Media and can be incorporated into a Blast Room application without the use of Scraper Blade Floors, Vibrating Floors or Screw Conveyors however the percentage of automatic Media Recovery diminishes and more manual labour is required to replenish the Bucket Elevator.

New Abrasive Media can be loaded directly onto the Mechanical Floor or placed directly into the Bucket Elevator.

Spent Abrasive Media including dust and contaminants are carried vertically through the Bucket Elevator and through a Cascading Dust Separation process. Dust and contaminants are vacuum drawn into the Dust Collector. The cleaned Abrasive Media is deposited in the Media Storage Hopper located above the Blast Vessel/s or directly into the Blast Vessel.

The ability to convey very large quantity of Media is the main benefit of using Mechanical Blast Room Recovery Systems. How much you can recover is dependent on the layout.

“Full Recovery” is the term used when 100% of the Blast Room floor automatically conveys the new and used Abrasive Blast Media back through the system and replenishes the Blast Vessel or Storage Hopper. This usually requires deep pits excavated into the Blast Room floor to accommodate the method of recovery floor.

“Partial Recovery” is the term used when less than 100% of the Blast Room floor is utilised to automatically convey the new and used Abrasive Blast Media back through the system to replenish the Blast Vessel or Storage Hopper.

Contact our [Engineering Team](#) to discuss your requirements and let us design, engineer and build you a Mechanical Abrasive Blast Room System specific to your requirements.

# TURBINE WHEEL MACHINES

## ABSS PLATE AND SECTION CLEANER CLEANER TURBINE BLAST MACHINES

### PLATE AND SECTION CLEANER

The ABSS Turbine Plate And Section Cleaner is designed to clean off rust, paint and millscale from straight or fabricated sections more effectively and economically than conventional methods such as air blast or chemical cleaning.

The ABSS Turbine Plate And Section Cleaners are high production machines that will process a wide variety of steel products such as plate, universal columns, beams, angle, flat, channel, bar, pipe, square and RHS sections.

Contact our Engineering Team to discuss your requirements and let us design, engineer and build you a Plate And Section Cleaner Turbine Blast Machine specific to your requirements.





## ABSS PIPE CLEANER TURBINE BLAST MACHINES

### PIPE CLEANER

The ABSS Turbine Pipe Cleaners are designed to blast clean the external surface of various diameter pipe section of rust, paint and millscale.

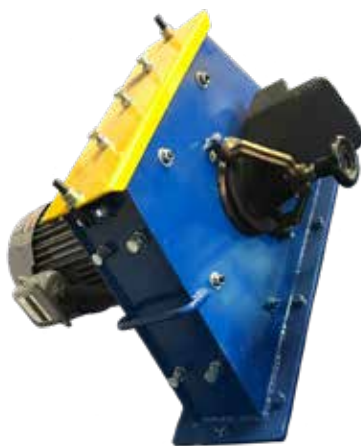
Skew rollers are utilised to provide forward movement as well as rotation on the product to be blasted.

All ABSS Turbine Blast Machines are purpose built heavy duty steel fabrications and lined with abrasive resistant plates and cast wear plates where the cabinet encounters direct blast.

Inlet and Outlet vestibules can be incorporated into the cabinet structure or made removable for easy product changeover.

Wear resistant rubber is used at the entrance and exit to prevent the egress of dust and media.

Contact our [Engineering Team](#) to discuss your requirements and let us design, engineer and build you a Turbine Pipe Cleaner specific to your requirements.



# ABSS TURBINE BLAST MACHINES

## TABLE TYPE CLEANERS

The ABSS Turbine Table Cleaners utilise a table that rotates beneath the blast wheel or multiple wheels. Table machines process a batch at a time.

Depending on the complexity of the substrate being blasted, a two-step blast cycle may be required. The parts may need to be re-orientated on the table to allow for complete coverage from the blast turbines.

Typically designed with either a swing door, where the table is built into the door and can be loaded from outside of the cabinet or a fixed table with a clam shell design door which exposes most of the table.

Contact our Engineering Team to discuss your requirements and let us design, engineer and build you a Table Type Cleaner specific to your requirements.



## TWIN TABLE AND COMBINATION TUMBLE BLASTER TURBINE MACHINES



## TUMBLE BLAST (APRON) CLEANERS

The ABSS range of Tumble Blast Machines offer a single load capacities of 75kg-1000kg or more with system integration.

The GW Series Shot Blasting Machine is suitable for a wide range of surface cleaning applications. As the work is gently tumbled inside the machine, the fixed turbine blast cleans each face of the component as it presented.

After the blasting operation has been completed, reversing the direction of the rubber belt conveyor discharges the work pieces from the machine. The belt is manufactured from a high wear-resistant rubber. It is extremely durable and ensures the components are not damaged during the cycle.

Contact our Engineering Team to discuss your requirements and let us design, engineer and build you a Tumble Blast (Apron) Cleaner specific to your requirements.



## SPINNER HANGER BLAST CLEANERS

The ABSS range of Spinner Hanger Blast Machines are designed to handle the cleaning and surface preparation of typically awkward components that cannot be adapted to a Table or Tumble Blast Machines. Parts are loaded onto a hanger and rotated during the blast cycle for multiple angle cleaning.

The abrasive blast is generated by one or more Blast Turbines depending on your specific application. The continuous abrasive recovery system removes spent abrasive from the Blast Chamber and feeds it through the airwash cleaner and into the storage hopper for re-use by the turbine.

Contact our Engineering Team to discuss your requirements and let us design, engineer and build you a Spinner Hanger Cleaner specific to your requirements.



## CAMFIL FARR GOLD SERIES®

---

The Camfil-Farr Gold Series® cartridge Dust Collector combines enhanced performance with the ease of service while cleaning the Blast Room environment of irritating dust. The Gold Series® cartridge Dust Collector has enhanced performance features with exceptional ease of installation and service making the Camfil-Farr Gold Series® the ultimate choice for a clean Blast Room.

Meeting airflow requirements with a 25% smaller housing allows the Gold Series® to deliver premium performance at a competitive price and take up less factory floor space. The service benefits are numerous offering faster, trouble-free change-out of cartridges

The Camfil-Farr Gold Series® cartridge Dust Collection system is supplied standard with the Gold Cone™ Filter Cartridge. Featuring an injection moulded inner cone in the centre of the Filter Cartridge, cleaning is accomplished by pulse waves that emanate outward from this inner cone providing enhanced cleaning for more efficient operation, longer cartridge life and reduced service requirements. This unique cartridge filtration method consolidates more filter area into a very small space, resulting in extremely efficient filtration at decreased media to air ratios, improved operation and maintenance at a token floor space requirement.

The Cartridge filtration system shortens filter change time up to 65% when compared to systems employing cloth filter socks.

A Dust Collector is only as effective as the system that controls its operation. The Camfil-Farr FDC Controller is the first to have Graphical User Interface (GUI) for ease of use, with clear, permanent instructions posted on the NEMA 4X water and chemical proof box. A pulse cleaning switch on the front of the box allows the user to clean "on demand" when the high pressure setting is reached and a dirty filter alarm sounds. By pulse-cleaning only when needed, less dust passes through the filters for reduced emissions.

The user can program the controller settings using a simple five-step intuitive procedure that is self-taught in less than a minute. The controller ships ready to install and includes fittings and air lines. Power requirements are 110/220 V, 50/60 Hz, 1-phase. The FDC Controller is UL and CE listed.

[Contact our Engineering Team to discuss a System specific to your requirements.](#)

The Camfil Farr Gold Series® Dust Collection system is supplied standard with the Gold Cone® Filter Cartridge.



## ABRASIVE RECOVERY SYSTEMS

Included in the ABSS Pneumatic Abrasive Recovery Systems, ABSS have incorporated the Camfil Farr Gold Series® Dust Collector.

Perfectly suited and sized to suit most standard ABSS Abrasive Recovery Systems available, the Camfil-Farr Gold Series® Dust Collector is utilised as part of the Airwash System to extract Dust and Debris from the Abrasive Media.

# DUST COLLECTION

---

The ABSS Dustech range of Dust Collectors are proudly Australian Made. Designed for the smaller application, the Dustech system is a reverse pulse Dust Collector that uses a pulse-jet of compressed air to clean the cartridge filters. This allows for an extremely high dust collection efficiency and a longer life expectancy for the cartridge filters.

All Dust Collectors are supplied with the Electronic Pulse Control Unit as standard. High quality, fully balanced fans and motors are selected to suit each specific duty.

The ABSS Dustech Dust Collector uses pleated cartridge filter elements that are encased in an all metal rigid housing. These filters are typically double stacked inside the Dust Collector reducing the required amount of floor space by up to 40%.

Sealed dust collection bins are included for easy removal and clean out. Large drums with forklift facilities are an optional accessory.

[Contact our Engineering Team to discuss a System specific to your requirements.](#)



## ABSS DUSTECH RANGE

---

500 CFM TO 4,000 CFM



## CAMFIL GSX-XFL RANGE

---

2,000 CFM TO 200,000 CFM



FOR FURTHER DETAILS PLEASE CONTACT US ON 1300 727 240



2,000 CFM TO 60,000 CFM



# MAGNETIC HEAT (FLAMELESS)

## MAG FAN HEAT

---

The Mag Fan D3500 uses magnetic heat to generate high volumes of humidity-free, low emissions heat for almost any large area. This economical heating solution quickly produces a tremendous amount of fast dry heat, without the use of spark, friction or flame. A safer alternative to an incineration device attached to a boiler, this flameless heater's efficiency rating is over 90 percent in many environments and weather conditions. This high efficiency lowers the cost per BTU, resulting in an overall reduced cost of operation. So even in the roughest, toughest weather conditions this user-friendly series is ready to deliver the heat.

Contact our Engineering Team to discuss a System specific to your requirements.

***A SAFER ALTERNATIVE  
TO HEAT!***

***100% FLAMELESS AND ODOURLESS***

***100% MOISTURE FREE HEAT***

***2 SERIES OFFERING 5 MODELS***

***FULL TELEMETRIC CAPABILITIES***

***BTUS UP TO 1.4 MILLION***

***AIR PUSH UP TO 8400 CFM***

***LIMITED MAINTENANCE***

***POWERED BY CAT/DOOSAN***



FOR FURTHER DETAILS PLEASE CONTACT US ON 1300 727 240

## TECHNICAL INFORMATION

Nozzle Orifice	Pressure Blast Nozzle Data						Air, Power and Abrasive Required
	Pressure At The Blast Nozzle (PSI)						
	60	70	80	90	100	125	
No.2 1/8" (3.2mm)	12	15	17	18.5	20	25	Air (CFM)
	35	40	46	51	56	69	Abrasive (kg/hr)
	3	3.5	4	4.5	5	5.5	Compressor (hp)
No.3 3/16" (4.8mm)	30	33	38	41	45	55	Air (CFM)
	77	89	98	108	120	145	Abrasive (kg/hr)
	7	8	9	10	10	12	Compressor (hp)
No.4 1/4" (6.4mm)	54	61	68	74	81	98	Air (CFM)
	142	161	185	203	224	276	Abrasive (kg/hr)
	12	14	16	17	18	22	Compressor (hp)
No.5 5/16" (8mm)	89	101	113	126	137	168	Air (CFM)
	242	274	305	336	369	446	Abrasive (kg/hr)
	20	23	26	28	31	37	Compressor (hp)
No.6 3/8" (9.5mm)	126	143	161	173	196	237	Air (CFM)
	347	392	436	478	523	633	Abrasive (kg/hr)
	28	32	36	39	44	52	Compressor (hp)
No.7 7/16" (11mm)	170	194	217	240	254	314	Air (CFM)
	469	534	596	658	720	877	Abrasive (kg/hr)
	38	44	49	54	57	69	Compressor (hp)
No.8 1/2" (12.7mm)	224	252	280	309	338	409	Air (CFM)
	607	687	763	843	920	1117	Abrasive (kg/hr)
	50	56	63	69	75	90	Compressor (hp)

*Disclaimer: The figures stated in the above chart are intended as a reference only.*

Nozzle Jet Combination	Suction Blast Gun Nozzle Data								Air Required
	Pressure At The Blast Nozzle (PSI)								
	30	40	50	60	70	80	90	100	
5/16" (18mm) Blast Nozzle, 1/8" (3.2mm) Air Jet	10	12	15	17	19	21	23	26	Air (CFM)
3/8" (9.5mm) Blast Nozzle, 3/16" (4.8mm) Air Jet	18	22	26	30	35	40	43	45	Air (CFM)

*Disclaimer: The figures stated in the above chart are intended as a reference only.*

# NOTES

---



# NOTES

---

# NOTES

---

# NOTES

---



**ABRASIVE BLASTING SERVICE AND SUPPLIES (ABSS) Pty Ltd**

**MELBOURNE HEAD OFFICE**

18 Beckett Avenue, Keilor East VIC 3033  
PH: (03) 9336 1961  
Fax: (03) 9331 6223  
Free Call 1300 727 240

**SYDNEY**

Unit 27, 274-276 Hoxton Park Road  
Prestons NSW 2170  
PH: (02) 9607 9953

FIND OUT MORE AT  
[www.abss.net.au](http://www.abss.net.au)

