

THE Ultimate CONDUIT

Triple Coated for Superior Protection and Performance

1 External Galvanised Coating

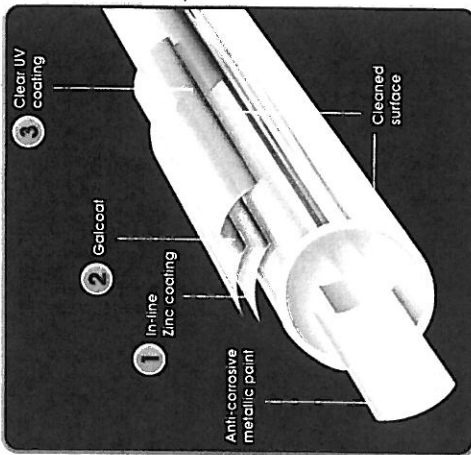
The external surface of Galcon Ultra is hot dip galvanised by a unique in-line process to achieve a smooth, even zinc coating. This coating not only provides excellent protection of the steel conduit against atmospheric corrosion but is durable and will withstand severe manipulation and mechanical damage.

2 Galcoat

The Galcoat is applied to protect the external galvanised surface of Galcon Ultra against the onset of white rust during storage and to provide optimum corrosion protection.

3 Clear UV Coating

The Clear UV Coating combined with these excellent coating systems provides Galcon Ultra with a smooth, clean, non-greasy surface which makes the installation of electrical circuits a neat, easy operation.



Galcon Ultra Triple Layer Protection System
The internal surface of Galcon Ultra is uniformly coated, including the weld, to provide a high grade finish which aids in the drawing of cables, minimising the necessity to use lubricants.

Product Description

Galcon Ultra is medium protection welded steel electrical conduit, screwed both ends and supplied complete with socket. Galcon Ultra is used in applications where a degree of mechanical strength and corrosion protection is required. Length - 4.0 metres.

Typical Applications

These include public and educational buildings, industrial plants, factories, commercial and high rise buildings, lift wells, etc.

Specifications

Galcon Ultra steel electrical conduit is manufactured to AUSTRALIAN Standard AS2053, 1995.

Installation Techniques

Cutting

Galcon Ultra steel conduit should be held in a pipe vice or similar apparatus and cut with a fine toothed hacksaw. Any resulting burr should be removed before threading.

Threading

Galcon Ultra steel conduit is easily threaded on-site by means of a stock and die fitted with a suitable guide. A soluble lubricant will assist the operation and a clean thread will result. A sufficient length of thread should be cut to allow the conduit to be securely screwed into a metallic fitting to ensure that both the mechanical strength and electrical continuity of the run is maintained in accordance with the requirements of the Australian Standard 3000-1991 S.A.A. Wiring Rules.

Both fixed and ratchet type stocks are available together with a range of dies from 20mm to 50mm. These should comply with AS1721 General Purpose Metric Screw Threads. Automatic Threading Machines are also available - enquiries should be directed to your Omega Electrical Wholesale Merchant.

Bending

For sizes 20mm and 25mm this may be carried out with the aid of an Omega manual type bender. A press bender is ideal for larger sizes or, alternatively, a filling should be inserted in the run.

Fixing

Where necessary Galcon Ultra steel conduit should be fixed with steel saddles or clips. These should be spaced at intervals not exceeding 2 metres.

Cable Drawing

The smooth internal finish of Galcon Ultra steel conduit facilitates the drawing in of cables with the aid of a draw wire or snake, without the risk of damage to conductors. Powdered lubricants are seldom required with Galcon Ultra steel conduit as is the case with PVC enclosures.

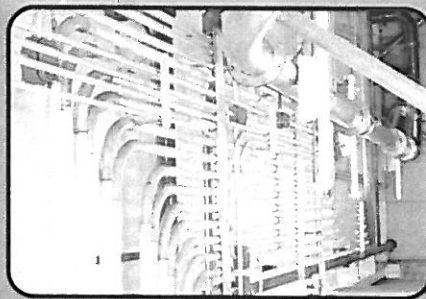
Earthing

Metallic conduits may be earthed by means of an earth clip or clamp at the end adjacent to the switch board of which they originate, or at the commencement of the run. Mechanical and electrical continuity must be maintained through metallic enclosures, control boxes, etc., by bonding with metal lock nuts so that the whole installation is considered as one. By ensuring that conduit threads are kept free of contamination, during assembly, the maximum resistance of two (2) ohms between the direct earthing electrode, or the neutral conductor of the supply system and any point on the installation is easily achieved.

10

for using Galcon Ultra

- 01 Quantum advances in internal & external coatings.
- 02 Sets a new standard of excellence with superior corrosion protection.
- 03 The weld is fully protected, both internally & externally, against corrosion.
- 04 Galcoat offers a significant reduction in oxidation & flaking common to pre-galvanised product.
- 05 The revolutionary triple layer protection system acts as a primer, so extensive cleaning is no longer needed - reducing costs.
- 06 The new generation anti-corrosion metallic paint fully protects the internal surface.
- 07 No more problems of having a weldline with different characteristics to the rest of the surface.
- 08 Flaking or cracking of the coat is eliminated.
- 09 Clean & easy to handle with no surface oil.
- 10 Smooth, even surface finish.



GALCON

Conduit Specifications

GALCON *Ultra*

Outside Diameter	Nominal Thickness	Internal Cross Sectional Area	Metric Thread To AS1721*	Length of Thread (Ends)	Runout of Thread	Approx. Mass	Standard Pack
mm	mm	mm ²	mm	mm	mm	kg/100m	m
20	1.6	222	M20x1.5 -7H/8g	14	2	83	40
25	1.8	360	M25x1.5 -7H/8g	17	3	120	28
32	1.8	634	M32x1.5 -7H/8g	19	3	156	20
40	1.8	1041	M40x1.5 -7H/8g	20	3	196	12
50	2.0	1663	M50x1.5 -7H/8g	23	3	275	12

*AS1721 - General purpose metric screw threads. Dimensions and thread data are in accordance with the Australian Standard 2053.

Bundling Data

Galcon Ultra - Medium Protection

Hot Dipped Galvanised Conduit - Heavy Protection

Size mm	Sub Bundle			Subs/ Master	Master Bundle		
	Lengths	Metres	Mass kg		Lengths	Metres	Mass kg
20	10	40	29.28	40	400	1600	1171
25	7	28	27.08	30	210	840	812
32	5	20	27.20	25	125	500	680
40	3	12	21.12	25	75	300	528
50	3	12	29.64	25	75	300	741

Size mm	Sub Bundle			Subs/ Master	Master Bundle		
	Lengths	Metres	Mass kg		Lengths	Metres	Mass kg
20	10	36	28.30	40	400	1440	1132
25	7	25.2	25.96	30	210	756	779
32	5	18	26.28	25	125	450	657
40	3	10.8	20.09	25	75	270	502
50	3	10.8	28.08	25	75	270	702

RELEVANT STANDARDS: Threading - AS 1721 - General Purpose Metric Screw Threads. Hot Dipped Galvanising - AS 1650 - Galvanised Coatings on Ferrous Articles. Both products manufactured to AS NZ 2053:1995

new **g**eneration conduit

GALCON *Ultra*

A complete range of galvanised fittings are also available:

- Solid bends
- Elbows (solid & inspection)
- Tees (solid & inspection)
- Couplings
- Round junction boxes (1, 2, 3, 4 way & 2 way angle)



BHP Structural & Pipeline Products



Omega branch directory:

VICTORIA (03) 9793 6111 NEW SOUTH WALES (02) 9734 9944 QUEENSLAND (07) 3216 2799 SOUTH AUSTRALIA (08) 8340 9200 WESTERN AUSTRALIA (08) 9451 7633

This brochure has been prepared by Omega Power Equipment Pty. Ltd. Although every effort has been made to ensure accuracy, the company cannot accept any responsibility for loss, damage or consequence from the use of this publication. Please note that the specifications and technical data stated are subject to change without notice.

ACN 005 772 672