

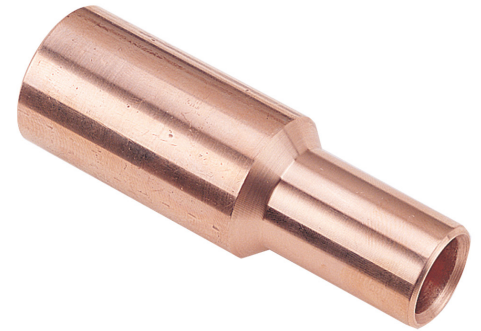
COPPER REDUCING LINKS

The CABAC copper reducing link range are a barrier type, so they can be used in any situation where an impermeable barrier to oils or water is required.

Note: Do not crimp close to the centre barrier or the links may shear.

FEATURES

- Suitable for circular and sector stranded copper conductors
- Application: reducing joints, fly leads, tails, etc.
- Impermeable barrier for oils and water
- Crimped with CABAC and MSS Power standard tooling and Copper dies
- Crimp with standard Australian/NZ dies



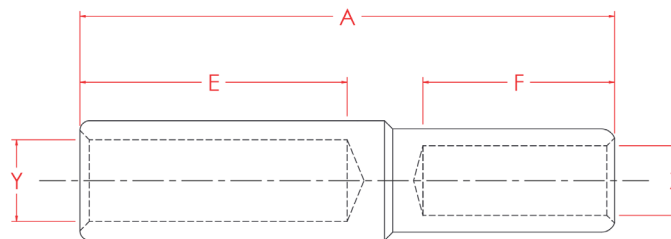
COMPLIANCE AND SAFETY

- AS4325 Part 1 Australia; IEC France; GL/DIN/VDE Germany; JIS Japan; BS United Kingdom; UL/NEMA USA
- Accepting Authorities: Electricity Services Victoria, Energy Australia, Rail Services Australia, Energex, Western Power - and many other recognised authorities.



TECHNICAL INFORMATION

	DESCRIPTION
Conductive Material	Copper 99.95% pure Oxygen content 30 p.p.m. Max. Tensile strength 200 MPa Ductile rating 40% Final metal state fully annealed
Plating	This product is not supplied plated since limited shelf life is expected
Operating Temperature	-55°C to 155°C
General Electrical Properties	Total conductivity 99.7% IACS Total resistivity 1.738 micro-ohm cm
Dimensional Specification	Tooling is interchangeable between cable accessories, Utilux and Burndy.



In support of our policy of continuous product improvement we reserve the right to change materials and specifications without notice. Drawings, where used, are not to scale. All dimensions are in millimetres and sizes given are approximate. Where possible, technical MSDS data sheets are made available on the website. All products should be installed and used in accordance with manufacturer's instructions provided. Warning: products may be the subject of registered designs and patents. Refer to website for terms and conditions on warranty.

COPPER REDUCING LINKS 6-150MM²

SPECIFICATIONS AND ORDERING INFORMATION

Part No.	Nominal Conductor (mm ²)	A (mm)	E (mm)	F (mm)	Y (mm)	Z (mm)	Large Barrel Crimp Die	Large A/F Hex Die (mm)	Large Barrel No Crimps	Small Barrel Crimp Die	Small A/F Hex Die (mm)	Small Barrel No Crimps	Unit	Qty
CASR6/4	6	30	10	10	4	3	K26 TOOL	4.4	1	K26 TOOL	-	1	EA	1
CASR10/6	10	30	10	10	4.5	4	K26 TOOL	5.7	1	K26 TOOL	4.4	1	EA	1
CASR16/6	16	40	19	10	5.5	4	HT130-C-16	6.3	1	K26 TOOL	4.4	1	EA	1
CASR16/10	16	40	19	10	5.5	4.5	HT130-C-16	6.3	1	K26 TOOL	5.7	1	EA	1
CASR25/6	25	40	21	10	7.1	4	HT130-C-25	7.7	1	K26 TOOL	4.4	1	EA	1
CASR25/10	25	40	21	10	7.1	4.5	HT130-C-25	7.7	1	K26 TOOL	5.7	1	EA	1
CASR25/16	25	50	21	19	7.1	5.5	HT130-C-25	7.7	1	HT130-C-16	6.3	1	EA	1
CASR35/10	35	40	21	10	8.5	4.5	HT130-C-35	9.2	1	K26 TOOL	5.7	1	EA	1
CASR35/16	35	55	21	19	8.5	5.5	HT130-C-35	9.2	1	HT130-C-16	6.3	1	EA	1
CASR35/25	35	60	21	21	8.5	7.5	HT130-C-35	9.2	1	HT130-C-25	7.7	1	EA	1
CASR50/10	50	45	22	10	9.5	4.5	HT130-C-50	10.4	1	K26 TOOL	5.7	1	EA	1
CASR50/16	50	55	22	19	9.5	5.5	HT130-C-50	10.4	1	HT130-C-16	6.3	1	EA	1
CASR50/25	50	55	22	21	9.5	7.5	HT130-C-50	10.4	1	HT130-C-25	7.7	1	EA	1
CASR50/35	50	60	22	21	9.5	8.5	HT130-C-50	10.4	1	HT130-C-35	9.2	1	EA	1
CASR70/16	70	60	24	19	11.5	5.5	HT130-C-70	11.5	1	HT130-C-16	6.3	1	EA	1
CASR70/25	70	60	24	21	11.5	7.5	HT130-C-70	11.5	1	HT130-C-25	7.7	1	EA	1
CASR70/35	70	65	24	21	11.5	8.5	HT130-C-70	11.5	1	HT130-C-35	9.2	1	EA	1
CASR70/50	70	65	24	22	11.5	9.5	HT130-C-70	11.5	1	HT130-C-50	10.4	1	EA	1
CASR95/25	95	65	27	21	13.5	7.5	HT130-C-95	14.2	1	HT130-C-25	7.7	1	EA	1
CASR95/35	95	65	27	21	13.5	8.5	HT130-C-95	14.2	1	HT130-C-35	9.2	1	EA	1
CASR95/50	95	70	27	22	13.5	9.5	HT130-C-95	14.2	1	HT130-C-50	10.4	1	EA	1
CASR95/70	95	70	27	24	13.5	11.5	HT130-C-95	14.2	1	HT130-C-70	11.5	1	EA	1
CASR120/25	120	70	30	21	15.5	7.5	HT130-C-120	16.5	1	HT130-C-25	7.7	1	EA	1
CASR120/35	120	70	30	21	15.5	8.5	HT130-C-120	16.5	1	HT130-C-35	9.2	1	EA	1
CASR120/50	120	70	30	22	15.5	9.5	HT130-C-120	16.5	1	HT130-C-50	10.4	1	EA	1
CASR120/70	120	75	30	24	15.5	11.5	HT130-C-120	16.5	1	HT130-C-70	11.5	1	EA	1
CASR120/95	120	75	30	27	15.5	13.5	HT130-C-120	16.5	1	HT130-C-95	14.2	1	EA	1
CASR150/50	150	70	30	22	16.5	9.5	HT130-C-150	18.3	1	HT130-C-50	10.4	1	EA	1
CASR150/70	150	75	30	24	16.5	11.5	HT130-C-150	18.3	1	HT130-C-70	11.5	1	EA	1
CASR150/95	150	80	30	27	16.5	13.5	HT130-C-150	18.3	1	HT130-C-95	14.2	1	EA	1
CASR150/120	150	80	30	30	16.5	15.5	HT130-C-150	18.3	1	HT130-C-120	16.5	1	EA	1

In support of our policy of continuous product improvement we reserve the right to change materials and specifications without notice. Drawings, where used, are not to scale. All dimensions are in millimetres and sizes given are approximate. Where possible, technical MSDS data sheets are made available on the website. All products should be installed and used in accordance with manufacturer's instructions provided. Warning: products may be the subject of registered designs and patents. Refer to website for terms and conditions on warranty.

CU REDUCING LINKS 185-1000MM²

SPECIFICATIONS AND ORDERING INFORMATION

Part No.	Nominal Conductor (mm ²)	A (mm)	E (mm)	F (mm)	Y (mm)	Z (mm)	Large Barrel Crimp Die	Large A/F Hex Die (mm)	Large Barrel No Crimps	Small Barrel Crimp Die	Small A/F Hex Die (mm)	Small Barrel No Crimps	Unit	Qty
CASR185/70	185	75	32	24	18.5	11.5	HT130-C-185	20	1	HT130-C-70	11.5	1	EA	1
CASR185/95	185	80	32	27	18.5	13.5	HT130-C-185	20	1	HT130-C-95	14.2	1	EA	1
CASR185/120	185	85	32	30	18.5	15.5	HT130-C-185	20	1	HT130-C-120	16.5	1	EA	1
CASR185/150	185	85	32	30	18.5	16.5	HT130-C-185	20	1	HT130-C-150	18.3	1	EA	1
CASR240/95	240	85	38	27	21.5	13.5	HT130-C-240	23.1	3	HT130-C-95	14.2	1	EA	1
CASR240/120	240	90	38	30	21.5	15.5	HT130-C-240	23.1	3	HT130-C-120	16.5	1	EA	1
CASR240/150	240	90	38	30	21.5	16.5	HT130-C-240	23.1	3	HT130-C-150	18.3	1	EA	1
CASR240/185	240	95	38	32	21.5	18.5	HT130-C-240	23.1	3	HT130-C-185	20	1	EA	1
CASR300/120	300	95	42	30	23.5	15.5	HT130-C-300	26	3	HT130-C-120	16.5	1	EA	1
CASR300/150	300	95	42	30	23.5	16.5	HT130-C-300	26	3	HT130-C-150	18.3	1	EA	1
CASR300/185	300	100	42	32	23.5	18.5	HT130-C-300	26	3	HT130-C-185	20	1	EA	1
CASR300/240	300	105	42	38	23.5	21.5	HT130-C-300	26	3	HT130-C-240	23.1	3	EA	1
CASR400/150	400	110	55	30	26.5	16.5	ECW-H3D-400	28.1	3	HT130-C-150	18.3	1	EA	1
CASR400/185	400	110	55	32	26.5	18.5	ECW-H3D-400	28.1	3	HT130-C-185	20	1	EA	1
CASR400/240	400	125	55	38	26.5	21.5	ECW-H3D-400	28.1	3	HT130-C-240	23.1	3	EA	1
CASR400/300	400	125	55	42	26.5	23.5	ECW-H3D-400	28.1	3	HT130-C-300	26	3	EA	1
CASR500/185	500	115	55	32	30	18.5	ECW-H3D-500	31	3	HT130-C-185	20	1	EA	1
CASR500/240	500	120	55	38	30	21.5	ECW-H3D-500	31	3	HT130-C-240	23.1	3	EA	1
CASR500/300	500	125	55	42	30	23.5	ECW-H3D-500	31	3	HT130-C-300	26	3	EA	1
CASR500/400	500	140	55	55	30	26.5	ECW-H3D-500	31	3	ECW-H3D-400	28.1	3	EA	1
CASR630/240	630	120	56	38	34	21.5	ECW-H3D-630	37	4	HT130-C-240	23.1	3	EA	1
CASR630/300	630	125	56	42	34	23.5	ECW-H3D-630	37	4	HT130-C-300	26	3	EA	1
CASR630/400	630	140	56	55	34	26.5	ECW-H3D-630	37	4	ECW-H3D-400	28.1	3	EA	1
CASR630/500	630	140	56	55	34	30	ECW-H3D-630	37	4	ECW-H3D-500	31	3	EA	1

In support of our policy of continuous product improvement we reserve the right to change materials and specifications without notice. Drawings, where used, are not to scale. All dimensions are in millimetres and sizes given are approximate. Where possible, technical MSDS data sheets are made available on the website. All products should be installed and used in accordance with manufacturer's instructions provided. Warning: products may be the subject of registered designs and patents. Refer to website for terms and conditions on warranty.