

## COPPER OUTDOOR STYLE LONG BARREL LUGS

Copper Long Barrel Lugs are designed for external use. There is no window present and the palms are solder sealed to stop the ingress of water. The extra long barrel allows more crimps than usual, in high stress areas, such as high voltage terminations, drop out fuses etc. The extra long barrel also allows more length for heatshrink sealing, to ensure a totally air tight seal.

The Long Barrel Outdoor Style Lug is designed for crimping with standard hexagon dies (also used for the standard range of copper lugs).

Made from 99.9%+ cu high conductivity copper, this lug provides the best electrical properties possible.

If a longer palm with two or more stud holes is required, please see the Long Palm Long Barrel Lug (LPB Range).



### COMPLIANCE AND SAFETY

- AS/NZS4325 Part 1 Australia; IEC France, DIN/VDE Germany, JIS Japan, BS United Kingdom and UL/NEMA USA
  - Accepting Authorities: Electricity Services Victoria, Energy Australia, Rail Services Australia, Energex, Western Power, Ergon, Integral Energy, Country Energy, Powercor and many other recognised authorities
- Test reports are available on request



### TECHNICAL INFORMATION

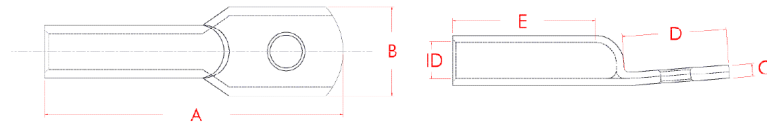
	DESCRIPTION
<b>Conductive Material</b>	Copper 99.95% pure Oxygen content 30 p.p.m Max. Tensile strength 200 MPa Ductile rating 40% Final metal state fully annealed
<b>Electroplating Material</b>	Tin 99.9% pure Other metals lead + antimony Thickness 5 -10 microns
<b>General Electrical Properties</b>	Total conductivity 99.7% IACS Total resistivity: 1.738 micro-ohm cm
<b>Operating Temperature</b>	-55°C to 155°C due to oxygen-free copper
<b>Dimensional Specification</b>	Tooling is interchangeable between CABAC, Utilux and Burndy

Torque Recommendations	
Thread dia.(mm)	Torque (Nm)
5	5
6	9
8	22
10	44
12	77
16	190

Recommended torques for hardware should be to Australian and New Zealand Standards

In support of our policy of continuous product improvement we reserve the right to change materials and specifications without notice. Drawings, where used, are not to scale. All dimensions are in millimetres and sizes given are approximate. Where possible, technical MSDS data sheets are made available on the website. All products should be installed and used in accordance with manufacturer's instructions provided. Warning: products may be the subject of registered designs and patents. Refer to website for terms and conditions on warranty.

## COPPER OUTDOOR STYLE LONG BARREL LUGS



### SPECIFICATIONS AND ORDERING INFORMATION

Part No.	Nominal Conductor (mm <sup>2</sup> )	Stranding No.	ID Size (mm)	Stud Size (mm)	A (mm)	B (mm)	C (mm)	D (mm)	E (mm)	A/F Hex Die (mm)	No. Crimps	Crimp Die	Unit	Qty
CAL10LB-6	10	7/1.35	4.7	6	39	12	1.8	16	21	5.7	2	HT130-C-10	EA	1
CAL16LB-6	16	7/1.7	5.5	6	60	11	2.3	20	35	6.3	2 OVERLAP	HT130-C-16	EA	1
CAL16LB-8	16	7/1.7	5.5	8	60	14	1.7	20	35	6.3	2 OVERLAP	HT130-C-16	EA	1
CAL25LB-8	25	19/1.35	7.1	8	62	14	2.4	22	35	7.7	2 OVERLAP	HT130-C-25	EA	1
CAL25LB-10	25	19/1.35	7.1	10	62	16	2	22	35	7.7	2 OVERLAP	HT130-C-25	EA	1
CAL25LB-12	25	19/1.35	7.1	12	62	18	1.75	22	35	7.7	2 OVERLAP	HT130-C-25	EA	1
CAL35LB-8	35	19/1.53	8.2	8	65	16	3	25	35	9.2	2 OVERLAP	HT130-C-35	EA	1
CAL35LB-12	35	19/1.53	8.2	12	65	20	2.3	25	35	9.2	2 OVERLAP	HT130-C-35	EA	1
CAL35LB-10	35	19/1.53	8.2	10	65	18	2.6	25	35	9.2	2 OVERLAP	HT130-C-35	EA	1
CAL50LB-10	50	19/1.78	9.5	10	77	18	3.2	27	44	10.4	2	HT130-C-50	EA	1
CAL50LB-12	50	19/1.78	9.5	12	77	21	2.7	27	44	10.4	2	HT130-C-50	EA	1
CAL70LB-10	70	19/2.14	11.2	10	81	21	3.3	27	48	11.5	2	HT130-C-70	EA	1
CAL70LB-12	70	19/2.14	11.2	12	81	21	3.3	27	48	11.5	2	HT130-C-70	EA	1
CAL95LB-10	95	37/1.78	13.4	10	88	25	3.9	27	54	14.2	2	HT130-C-95	EA	1
CAL95LB-12	95	37/1.78	13.4	12	88	25	3.9	27	54	14.2	2	HT130-C-95	EA	1
CAL120LB-10	120	37/2.03	15.6	10	98	29	5	30	60	16.5	3	HT130-C-120	EA	1
CAL120LB-12	120	37/2.03	15.6	12	98	29	5	30	60	16.5	3	HT130-C-120	EA	1
CAL150LB-12	150	37/2.25	16.7	12	110	32	5.5	41	60	18.3	4 OVERLAP	HT130-C-150	EA	1
CAL150LB-16	150	37/2.25	16.7	16	110	32	5.5	41	60	18.3	4 OVERLAP	HT130-C-150	EA	1
CAL185LB-12	185	37/2.25	18.4	12	115	32	5.5	41	64	20	4 OVERLAP	HT130-C-185	EA	1
CAL240LB-10	240	61/2.25	21.2	10	142	40	7.1	50	80	23.1	4	HT130-C-240	EA	1
CAL240LB-12	240	61/2.25	21.2	12	142	40	7.1	50	80	23.1	4	HT130-C-240	EA	1
CAL300LB	300	61/2.52	23.5	-	153	45	7.8	50	90	26	4	HT130-C-300	EA	1
CAL300LB-10	300	61/2.52	23.5	10	153	45	7.8	50	90	26	4	HT130-C-300	EA	1
CAL300LB-12	300	61/2.52	23.5	12	153	45	7.8	50	90	26	4	HT130-C-300	EA	1
CAL400LB	400	61/2.85	26.8	-	170	50	7.7	52	100	28.1	3	ECW-H3D-400	EA	1
CAL500LB	500	61/3.20	30	-	181	56	8.5	56	105	31	3	ECW-H3D-500	EA	1
CAL630LB	630	127/2.52	34	-	193	65	10.9	56	115	37	4	ECW-H3D-630	EA	1

In support of our policy of continuous product improvement we reserve the right to change materials and specifications without notice. Drawings, where used, are not to scale. All dimensions are in millimetres and sizes given are approximate. Where possible, technical MSDS data sheets are made available on the website. All products should be installed and used in accordance with manufacturer's instructions provided. Warning: products may be the subject of registered designs and patents. Refer to website for terms and conditions on warranty.