

## COPPER SLEEVES AND SLEEVES KITS

The CABAC copper sleeve (links) range is made from 99.9%+ cu IACS high conductivity copper which provides the best electrical properties possible.

Because the copper is oxygen free, CABAC copper links are capable of withstanding a continuous operating temperature of 155°C, which is well above normal capabilities of copper links. They should be crimped with standard Australian tooling.

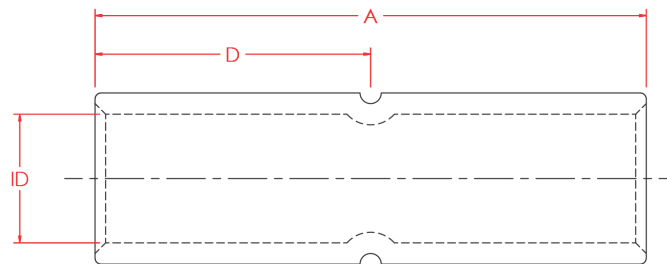


### COMPLIANCE AND SAFETY

- AS4325 Part 1 Australia; DIN/VDE, Germany; JIS Japan; BS United Kingdom; UL/NEMA USA
- Accepting Authorities: Electricity Services Victoria, Energy Australia, Rail Services Australia, Energex, Western Power - and many other recognised authorities

### TECHNICAL INFORMATION

|                                      | DESCRIPTION   |
|--------------------------------------|---|
| <b>Conductive Material</b>           | Copper 99.95% pure<br>Oxygen content 30 p.p.m. Max.<br>Tensile strength 200 MPa<br>Ductile rating 40%<br>Final metal state - fully annealed |
| <b>Electroplating Material</b>       | Tin 99.9% pure<br>Other metals - lead & antimony<br>Thickness 4 microns   |
| <b>Operating Temperature</b>         | -55°C to 155°C Due to oxygen free copper  |
| <b>General Electrical Properties</b> | Total conductivity 99.7% IACS<br>Total resistivity 1.738 micro-ohm cm   |
| <b>Dimensional Specification</b>     | Tooling is interchangeable between Cable Accessories, Utilux and Burndy   |



In support of our policy of continuous product improvement we reserve the right to change materials and specifications without notice. Drawings, where used, are not to scale. All dimensions are in millimetres and sizes given are approximate. Where possible, technical MSDS data sheets are made available on the website. All products should be installed and used in accordance with manufacturer's instructions provided. Warning: products may be the subject of registered designs and patents. Refer to website for terms and conditions on warranty.

## COPPER SLEEVES AND SLEEVES KITS

### SPECIFICATIONS AND ORDERING INFORMATION

| Part No. | Nominal Conductor (mm <sup>2</sup> ) | Stranding No. | ID Size (mm) | A (mm) | D (mm) | A/F Hex Die (mm) | No. Crimps                 | Crimp Die   | Unit | Qty |
|----------|--------------------------------------|---------------|--------------|--------|--------|------------------|----------------------------|-------------|------|-----|
| CAS1.5   | 1.5                                  | 7/0.50        | 1.8          | 22     | 11     | -                | 1                          | K26         | BOX  | 100 |
| CAS2.5   | 2.5                                  | 7/0.67        | 2.4          | 22     | 11     | -                | 1                          | K26         | BOX  | 100 |
| CAS4     | 4                                    | 7/0.85        | 3.1          | 22     | 11     | -                | 1                          | K26         | BOX  | 100 |
| CAS6     | 6                                    | 7/1.04        | 3.8          | 22     | 11     | 4.4              | 1                          | K06         | BOX  | 100 |
| CAS10    | 10                                   | 7/1.35        | 4.7          | 22     | 11     | 5.7              | 1                          | K06         | BOX  | 100 |
| CAS16    | 16                                   | 7/1.70        | 5.5          | 44     | 22     | 6.3              | 1                          | HT130-C-16  | BOX  | 100 |
| CAS25    | 25                                   | 19/1.35       | 7.1          | 48     | 24     | 7.7              | 1                          | HT130-C-25  | BOX  | 50  |
| CAS35    | 35                                   | 19/1.53       | 8.2          | 48     | 24     | 9.2              | 1                          | HT130-C-35  | BOX  | 50  |
| CAS50    | 50                                   | 19/1.78       | 9.5          | 48     | 24     | 10.4             | 1                          | HT130-C-50  | BOX  | 50  |
| CAS70    | 70                                   | 19/2.14       | 11.2         | 52     | 26     | 11.5             | 1                          | HT130-C-70  | BOX  | 25  |
| CAS95    | 95                                   | 37/1.78       | 13.4         | 54     | 27     | 14.2             | 1                          | HT130-C-95  | EA   | 1   |
| CAS120   | 120                                  | 37/2.03       | 15.6         | 66     | 33     | 16.5             | 1 FOR ROUND, 2 FOR COMPACT | HT130-C-120 | EA   | 1   |
| CAS150   | 150                                  | 37/2.25       | 16.7         | 66     | 33     | 18.3             | 1 FOR ROUND, 2 FOR COMPACT | HT130-C-150 | EA   | 1   |
| CAS185   | 185                                  | 37/2.52       | 18.4         | 66     | 33     | 20               | 1 FOR ROUND, 2 FOR COMPACT | HT130-C-185 | EA   | 1   |
| CAS240   | 240                                  | 61/2.25       | 21.2         | 91     | 45     | 23.1             | 3                          | HT130-C-240 | EA   | 1   |
| CAS300   | 300                                  | 61/2.52       | 23.5         | 91     | 45     | 26               | 3                          | HT130-C-300 | EA   | 1   |
| CAS400   | 400                                  | 61/2.85       | 26.8         | 91     | 45     | 28.1             | 3                          | ECW-H3D-400 | EA   | 1   |
| CAS500   | 500                                  | 61/3.20       | 30           | 112    | 56     | 31               | 3                          | ECW-H3D-500 | EA   | 1   |
| CAS630   | 630                                  | 127/2.52      | 34           | 112    | 56     | 37               | 4                          | ECW-H3D-630 | EA   | 1   |

### LUG KITS

| Part No. | Description                    | Unit | Qty |
|----------|--------------------------------|------|-----|
| CAS2.5/K | COPPER SLEEVE CAS2.5 KIT OF 10 | KIT  | 1   |
| CAS4/K   | COPPER SLEEVE CAS4 KIT OF 10   | KIT  | 1   |
| CAS6/K   | COPPER SLEEVE CAS6 KIT OF 10   | KIT  | 1   |
| CAS10/K  | COPPER SLEEVE CAS10 KIT OF 7   | KIT  | 1   |
| CAS16/K  | COPPER SLEEVE CAS16 KIT OF 5   | KIT  | 1   |
| CAS25/K  | COPPER SLEEVE CAS25 KIT OF 3   | KIT  | 1   |
| CAS35/K  | COPPER SLEEVE CAS35 KIT OF 3   | KIT  | 1   |
| CAS50/K  | COPPER SLEEVE CAS50 KIT OF 2   | KIT  | 1   |
| CAS70/K  | COPPER SLEEVE CAS70 KIT OF 2   | KIT  | 1   |

In support of our policy of continuous product improvement we reserve the right to change materials and specifications without notice. Drawings, where used, are not to scale. All dimensions are in millimetres and sizes given are approximate. Where possible, technical MSDS data sheets are made available on the website. All products should be installed and used in accordance with manufacturer's instructions provided. Warning: products may be the subject of registered designs and patents. Refer to website for terms and conditions on warranty.