



Wiser Iconic Connected Socket

3025CSG
PDL395CSG

Iconic

Life Is On

CLIPSAL
by Schneider Electric



by Schneider Electric

- 1 Follow these installation instructions
- 2 Download the Wiser Room App for your smartphone
- 3 Connect your smartphone to the socket
- 4 Configure the socket and save settings



Download

Wiser Room App



Connected technology for smart homes

For your safety

⚠️ DANGER

HAZARD OF ELECTRIC SHOCK, EXPLOSION, OR ARC FLASH

- This product must be installed and serviced by appropriately qualified and/or licenced electrical personnel.
- Isolate the electrical supply before doing any work on the product.
- Ensure that the product has been correctly installed and tested for safe operation before reconnecting the electrical supply.

Failure to follow these instructions will result in death or serious injury.



GDE15058

⚠️ CAUTION

EQUIPMENT DAMAGE HAZARD

- Install the device according to instructions in this document.
- Do not use this product for any other purpose than specified in this instruction.
- Dropping the device may damage the socket. Check device operates after being dropped or if physical damage is shown.

Failure to follow these instructions can result in injury or equipment damage.

Technical Data

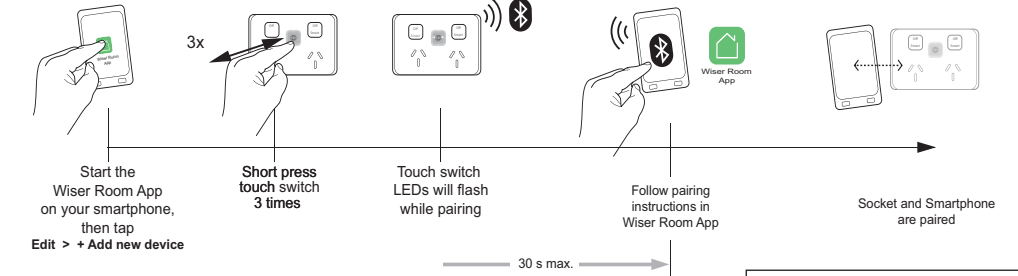
Note: See product datasheet for full specifications. Specifications typical at 25 °C

Operating voltage	220–240 V a.c., 50 Hz
Max load rating	10 A
Over current/thermal fuse protection	No
Short circuit protection	No
Safety compliance	AS/NZS 3112 AS/NZS 60669.2.1
EMC emission compliance	AS/NZS 4268
Power failure data retention	Internal date/time retained for at least 6 hrs. Settings preserved indefinitely.
Environmental rating	IP20 (designed for indoor use only)
Operating humidity	5%–90% RH, non-condensing
Wall box/ bracket range compatibility	155 155NA 157 157PRM 157/1PRMD 157/1F PDL144

No user serviceable parts inside

Using the Wiser Room app

Pairing



Configuration with the Wiser Room App

Use the Wiser Room App to configure the socket:

- Controlling the left and right sockets.
- Setting/adjusting the timer.
- Setting a time schedule.
- Create an 'Installer restore point' to save settings in case a future restore is needed (**highly recommended**).
- 'Copy and paste' settings from another Wiser Iconic device to save time when configuring multiple sockets, such as when installing in an apartment block.

If desired, use the Wiser Room App to set and adjust the timer, and set up to 16 time schedules.

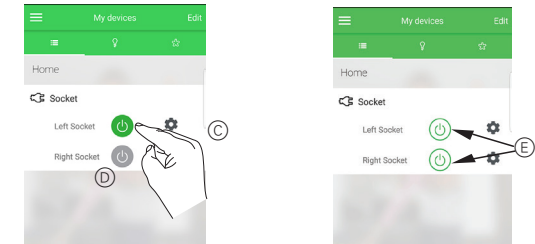
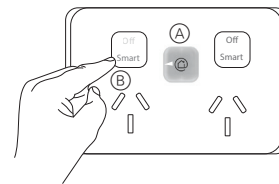
NOTE: When controlling with the Wiser Room App be in the same room and within a range of 8-10 m of the switch. Range can be affected by walls and other structures.

Note:
Physical access to the device will allow anyone to pair with their Mobile App.

Controlling the left and right sockets

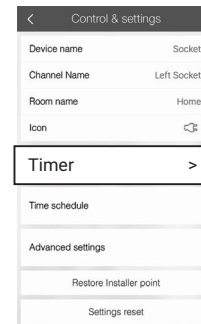
Note: When the touch switch is pressed an illuminated arrow will indicate which sockets are active (A).

- Push the rocker switch down to the Smart (B) position.
- In the Wiser Room App press the desired Socket to make active. Indicator will display green (C). If Rocker is in Off position, the socket will display grey (D) and cannot be used.

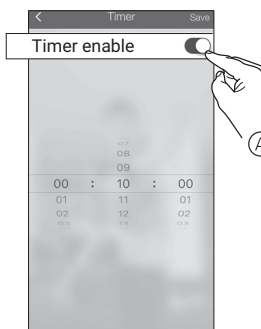


Note: In the Wiser Room App the sockets will display white with green outline (E) when the rocker is in the smart position but the socket is not active.

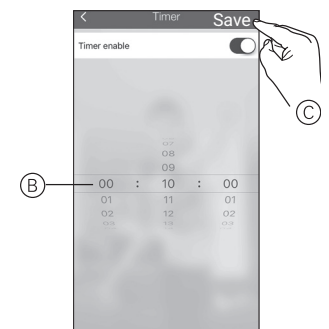
Setting/Adjusting the timer



Timer >



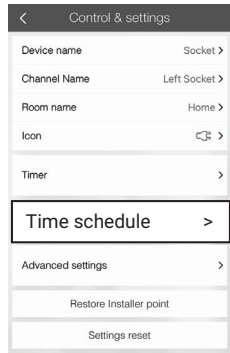
Enable the timer (A)



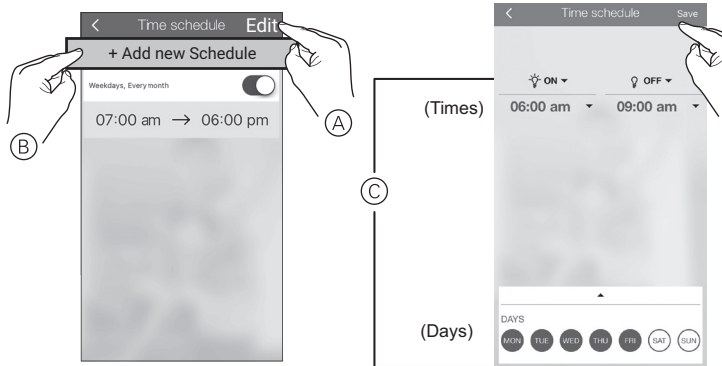
Set time interval (B), then save (C)



Setting a time schedule



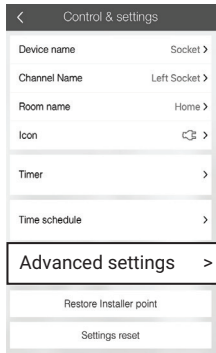
Time schedule >



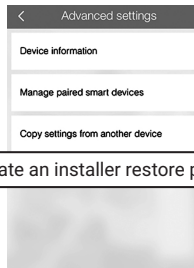
Edit (A), + Add new schedule (B)

Make selection (C), then save (D)

Creating an Installer restore point



Advanced settings >



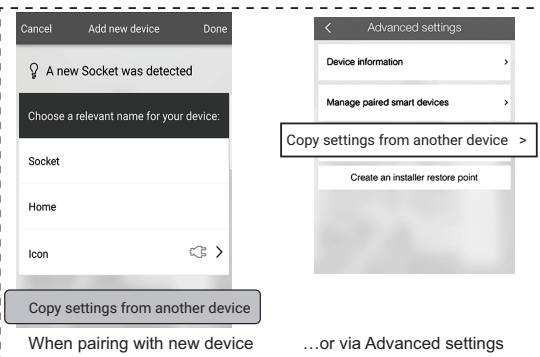
Create an installer restore point



Enter password (A), then Continue (B)
(Note: Password cannot be changed)

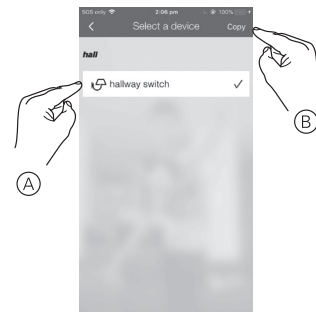
'Copy and paste' settings from another Wiser Iconic device

Note: Settings can only be copied from a socket of the exact same model.



When pairing with new device

...or via Advanced settings



Select switch to copy from (A), then copy (B)

Customer care



by Schneider Electric



by Schneider Electric

Australia

We warrant this product for 2 years, for details visit:
<https://www.schneider-electric.com.au/en/about-us/legal/terms-and-conditions.jsp>

Schneider Electric (Australia) Pty Ltd

33-37 Port Wakefield Road, Gepps Cross SA 5094

Call Customer Care: 13 73 28

Email: customercare.au@se.com

www.schneider-electric.com.au

New Zealand

We warrant this product for 2 years, for details visit:
<https://www.schneider-electric.co.nz/en/about-us/legal/terms-and-conditions.jsp>

Schneider Electric (NZ) Ltd

Building 6, 60 Highbrook Drive, Auckland 2013

Call Customer Care: 0800 652 999

Email: sales@nz.se.com

www.schneider-electric.co.nz

Schneider Electric reserves the right to change specifications, modify designs and discontinue items without incurring obligation and whilst every effort is made to ensure that descriptions, specifications and other information in this catalogue are correct, no warranty is given in respect thereof and the company shall not be liable for any error therein.

© Schneider Electric 2020

This material is copyright under Australian and international laws. Except as permitted under the relevant law, no part of this work may be reproduced by any process without prior written permission of and acknowledgment to Schneider Electric.