



# Smart Push-Button Remote Mechanism with ControlLink and LED

41EPBCLM-VW

## Iconic



1 Follow the installation instructions

2 Configure the mechanism if required



## Prerequisites and accessories

- Any Iconic push button primary mechanism with ControlLink capability.
- Iconic grid, skin and dolly for mounting.  
**Note:** Parts packs are available separately in various colours to complement the installation decor. See [clipsal.com/Iconic](http://clipsal.com/Iconic) for more information.
- Standard wiring for ControlLink connections.

## Getting to know the Smart Remote Mechanism

- Push button (tactile) control
- ControlLink remote multi-way dimming and switching
- Load state indicator
- Works 'out of the box' with the Wiser Iconic Push-Button Dimmer.



## For your safety

### ⚠ ⚠ DANGER

#### HAZARD OF ELECTRIC SHOCK, EXPLOSION, OR ARC FLASH

- It is illegal for persons other than an appropriately licensed electrical contractors or other persons authorised by legislation to work on the fixed wiring of any electrical installation.
- To comply with all safety standards, the product must be used only for the purpose described in this instruction and must be installed in accordance with the wiring rules and regulation in the location where it is installed.
- There are no user serviceable parts inside the product.

**Failure to follow these instructions will result in death or serious injury.**

### ⚠ ⚠ DANGER

#### HAZARD OF ELECTRIC SHOCK

- Hazardous voltage and electrical current may be present at the wire leads and outputs of this product even when the device is switched off or the dimmer controls set to zero brightness level.
- Lock out and tag the input circuit before accessing the wiring connections.
- The Locking Bar on Iconic grids must be set to the Closed position to ensure that the mechanism cannot be removed during normal operation.

**Failure to follow these instructions will result in death or serious injury.**

### ⚠ CAUTION

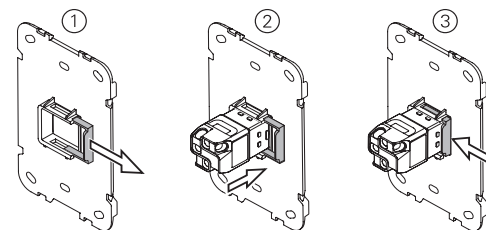
#### EQUIPMENT DAMAGE HAZARD

- Install the device according to instructions in this document.
- Pay attention to the specifications and wiring diagrams related to the installation.
- Do not use this product for any other purpose than specified in this instruction.

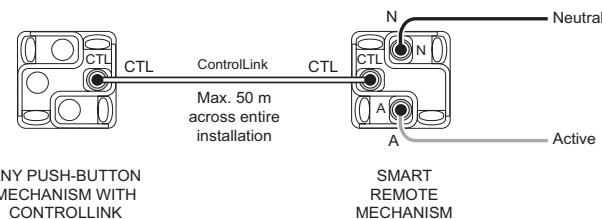
**Failure to follow these instructions can result in injury or equipment damage.**



## Fitting the mechanism to the grid



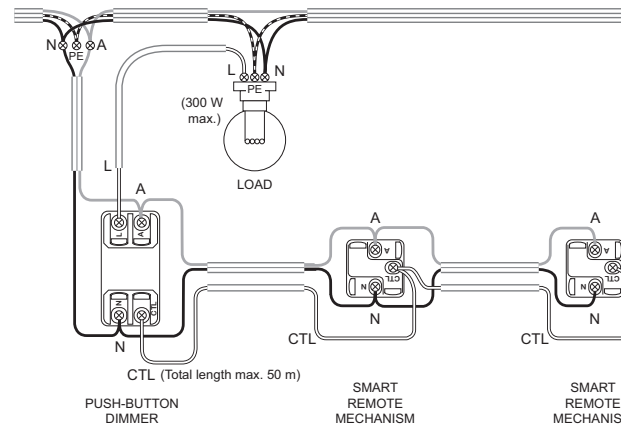
## Cabling and connections



### Notes:

- All Active connections must be on the same phase.
- Total length of ControlLink cable in an installation must not exceed 50 m.

## Example: Typical 3-way dimmer installation using Wiser Iconic Push-Button Dimmer + 2 Smart Remote Mechanisms



### Note:

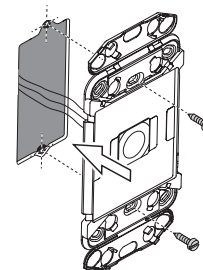
All Active connections must be on the same phase.

A	Active
N	Neutral
L	Load
CTL	ControlLink
PE	Protective Earth

### Notes:

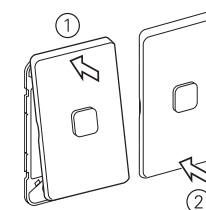
- Up to 5-way dimming is possible with a maximum of 4 Smart Remote Mechanisms.
- Multiple dimmers cannot share the same load(s).
- Total length of ControlLink cable in an installation must not exceed 50 m.

## Mounting the grid

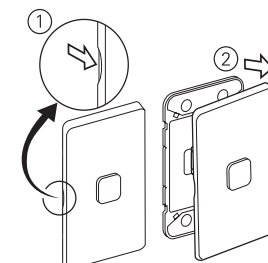


Wall box depth:  
min. 35 mm

## Installing the skin



## Removing the skin





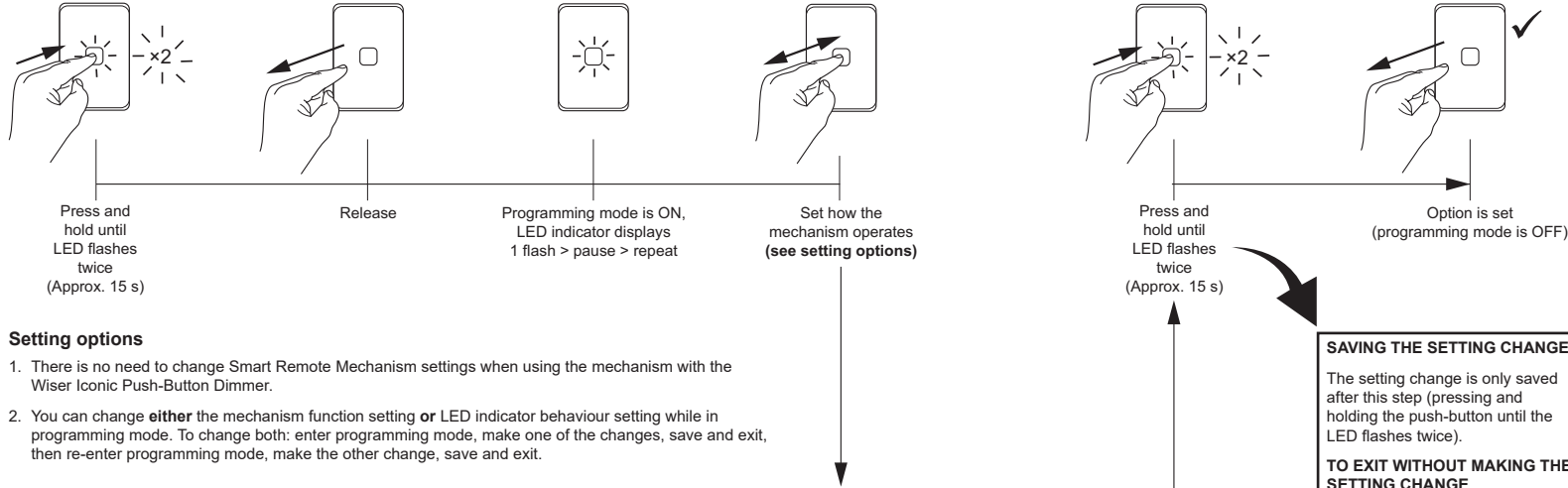
### Smart Remote Mechanism and Iconic Push-Button Dimmers—default settings

The Smart Remote Mechanism works 'out of the box' with the Wisier Iconic Push-Button Dimmer and the Iconic Push-Button Universal Dimmer with ControlLink. The mechanism LED indicator automatically follows the LED setting of the Wisier Iconic Push-Button Dimmer.

### Configuring the Smart Remote Mechanism for other Iconic primary mechanisms

The Smart Remote Mechanism is compatible with other Iconic push-button primary mechanisms. If the primary mechanism is not a dimmer, you must set the Smart Remote Mechanism to operate as a switch (see below).

### Changing how the Smart Remote Mechanism operates



### Setting options

- There is no need to change Smart Remote Mechanism settings when using the mechanism with the Wisier Iconic Push-Button Dimmer.
- You can change **either** the mechanism function setting **or** LED indicator behaviour setting while in programming mode. To change both: enter programming mode, make one of the changes, save and exit, then re-enter programming mode, make the other change, save and exit.

### Setting the mechanism function

Option	Setting	Use mechanism with:	Action to set option	LED indication
1	Operate as a switch (toggle On/Off)	<ul style="list-style-type: none"> <li>Iconic push-button electronic switches, timers and time clocks</li> <li>Other Iconic push-button devices with ControlLink that require a toggle switch</li> </ul>	No action (Option 1 is selected automatically when programming mode starts)	1 flash > pause > repeat
2	Operate as a bell press (momentary switch)	Iconic push-button devices with ControlLink that require a bell press switch	Short press once	2 flashes > pause > repeat
<b>3</b>	Operate as a dimmer (On/Off, ramp Up/Down) <b>DEFAULT SETTING</b>	Iconic push-button dimmers with ControlLink	Short press twice	3 flashes > pause > repeat

### Setting the LED Indicator behaviour

To manually change the LED indicator setting to match the settings of the primary mechanism, choose one of these options.

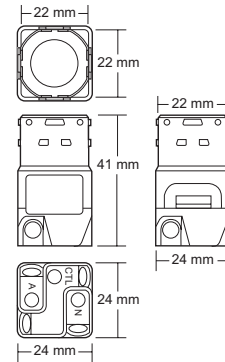
Option	Setting	Use these settings with:	Action to set option	LED indication
4	LED indicator OFF when load is ON; 10% illumination when load is OFF.	Iconic push-button devices with ControlLink that do not support automatic sync of LED indication setting with connected Smart Remote Mech.	Short press three times	4 flashes > pause > repeat
5	LED indicator ON when load is ON; OFF when load is OFF.		Short press four times	5 flashes > pause > repeat
6	LED indicator OFF at all times.		Short press five times	6 flashes > pause > repeat
<b>7</b>	LED indicator ON when load is ON; 10% illumination when load is OFF <b>DEFAULT SETTING</b>		Short press six times	7 flashes > pause > repeat

### Technical data

Note: See product data sheet for full specifications.

Operating voltage	220–240 V a.c., 50 Hz
Load rating	Max. 50 mA
Multi-way dimming limits	Max. 5-way dimming with up to 4 Smart Remote Mechanisms
Multi-way interface	ControlLink
ControlLink cable limit	Max. 50 m for entire installation
Environmental rating	IP20 (designed for indoor use only)
Operating humidity	5%–90% RH, non-condensing
Compliance	AS/NZS 60669.2.1, AS/NZS CISPR-15

Specifications typical at 25 °C.



### SAVING THE SETTING CHANGE

The setting change is only saved after this step (pressing and holding the push-button until the LED flashes twice).

### TO EXIT WITHOUT MAKING THE SETTING CHANGE

Wait 30 seconds without taking any action and the mechanism will exit programming mode.

### Customer care

### Warranty information

We warrant this product for 2 years—visit <https://www.schneider-electric.com.au/en/about-us/legal/terms-and-conditions.jsp> for details.

Our goods also come with guarantees that cannot be excluded under the Australian Consumer Law. You are entitled to a replacement or refund for a major failure and compensation for any other reasonably foreseeable loss or damage. You are also entitled to have the goods repaired or replaced if the goods fail to be of acceptable quality and the failure does not amount to a major failure.

Life Is On

**CLIPSAL**  
by Schneider Electric

Schneider Electric (Australia) Pty Ltd

Customer Care: 1300 369 233

Email: [customercare.au@schneider-electric.com](mailto:customercare.au@schneider-electric.com)

[www.schneider-electric.com.au](http://www.schneider-electric.com.au)

Schneider Electric reserves the right to change specifications, modify designs and discontinue items without incurring obligation and whilst every effort is made to ensure that descriptions, specifications and other information in this catalogue are correct, no warranty is given in respect thereof and the company shall not be liable for any error therein.

© Schneider Electric 2018

This material is copyright under Australian and international laws. Except as permitted under the relevant law, no part of this work may be reproduced by any process without prior written permission of and acknowledgement to Schneider Electric.