



Connected Dimmer
with ControlLink

41EPBDWCLM-VW
P41EPBDWCLM-XW

40 Series Module

Life Is On

CLIPSAL
by Schneider Electric

1 Follow the installation instructions

2 Download the Wisier Room App for your smartphone

3 Connect your smartphone to the dimmer

4 Configure the dimmer and save settings



Wisier Room App



Download the Wisier Room App to connect your smart phone or tablet to Clipsal modules

Load compatibility

	Dimmable LED	300 W
	Non-dimmable LED	Not compatible
	240 V Incandescent/Halogen	300 W
	LV halogen with electronic transformer	300 W
	LV halogen with iron-core transformer	300 W
	Dimmable compact fluorescent	300 W
	Non-dimmable compact fluorescent	Not compatible

Derating

For applications in which multiple switches are installed within the same switch plate, derate the maximum load rating of each switch as shown.

Dimmers	Max load
1	300 W
2	225 W
3	150 W



GDE46673

For your safety

⚠️ DANGER

HAZARD OF ELECTRIC SHOCK, EXPLOSION, OR ARC FLASH

- This product must be installed and serviced by appropriately qualified and/or licenced electrical personnel.
- Isolate the electrical supply before doing any work on the product.
- Ensure that the product has been correctly installed and tested for safe operation before reconnecting the electrical supply.
- The Locking Bar on grids must be set to the closed position to ensure that the mechanism cannot be removed during normal operation.

Failure to follow these instructions will result in death or serious injury.

⚠️ CAUTION

EQUIPMENT DAMAGE HAZARD

- Install the device according to instructions in this document.
- Pay attention to the specifications and wiring diagrams related to the installation.
- Do not use this product for any other purpose than specified in this instruction.
- Dropping the device may damage the mech. Check device operates after being dropped or if physical damage is shown.

Failure to follow these instructions can result in injury or equipment damage.

NOTICE

EQUIPMENT DAMAGE HAZARD (LOAD AND OPERATION)

- Operation of units at elevated temperatures or voltages outside of specification (240 V a.c. and 25 °C) may cause the over-temperature protection circuitry to operate. Operating with significant overload may activate thermal shut-down.
- Reduce the size of the connected load or use a different brand of lamp to prevent recurrence.
- Do not operate the product for prolonged periods in extreme conditions.

Failure to follow these instructions can result in equipment damage.

NOTICE

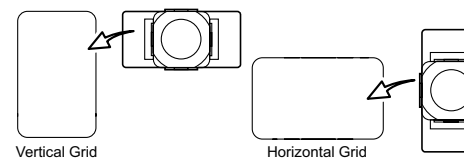
MAXIMUM LOAD RATINGS APPLY

Ensure that the number of low voltage lighting transformers connected to a single LED Push-Button Dimmer does not exceed the maximum load rating of the unit.

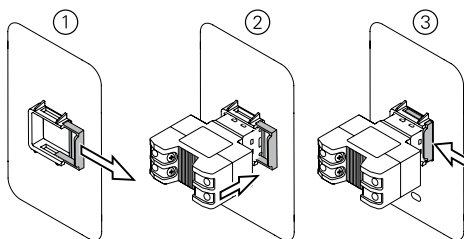
Failure to follow these instructions can result in equipment damage.

Installation

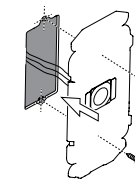
Multi-gang orientation



Fitting the module to the grid



Mounting the grid

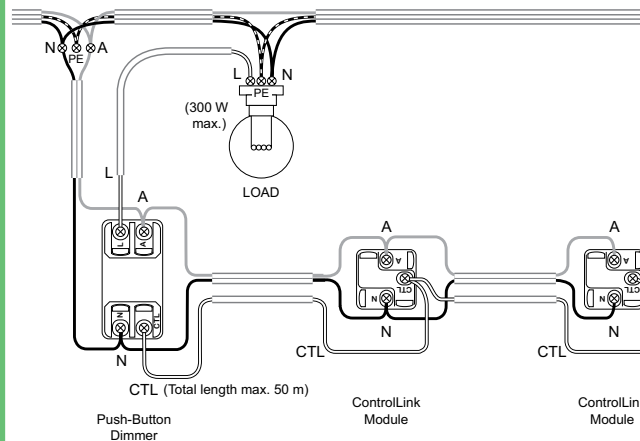


Wall box depth
min. 70 mm



Cabling and connections

(Typical 3-way dimmer installation using 1 Connected Dimmer + 2 ControlLink Modules)



Note:
All Active connections must be on the same phase.

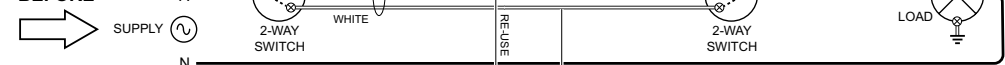
A Active
N Neutral
L Load
CTL ControlLink
PE Protective Earth

Notes:

- Up to 5 way dimming (e.g. 1 dimmer plus up to 4 ControlLink Modules, or up to 3 dimmers plus 2 ControlLink Modules). In case of multiple dimmers being installed, each dimmer must be connected to a separate load.
- Total length of ControlLink cable in a circuit must not exceed 50 m.
- Control and load cables must not be coupled.

Retrofit (2-way illustration shown)

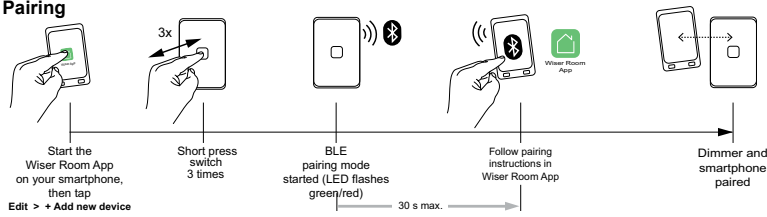
BEFORE



AFTER



Pairing



Dimmer default settings

The dimmer can be installed and operated 'out of the box' as a dimmer mechanism with no configuration. The dimmer incorporates a **Memory** function, so after switching **OFF** the load will return to the previous brightness level when switched **ON** again. **Note:** At low dim levels a **kick-start** may occur.

Customising with the Wisier Room App

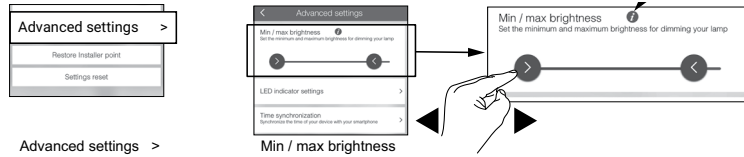
Use the Wisier Room App to customise the dimmer:

- Adjust the minimum brightness level based on the load requirements.
- Change the status LED indicator behaviour.
- Create an Installer restore point to save the settings in case a future restore is needed (**highly recommended**).
- 'Copy and paste' settings from another Wisier Iconic dimmer to save time when configuring multiple dimmers, such as when installing in an apartment block.

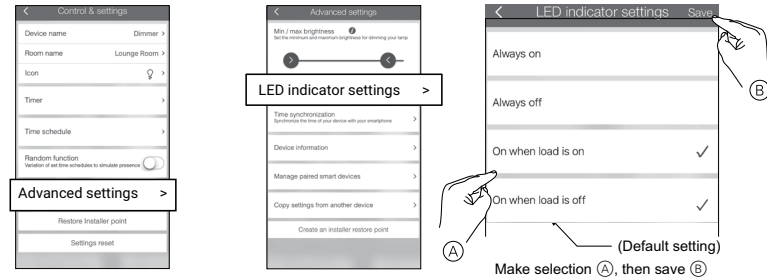
You can use the Wisier Room App to set and adjust the timer, and set up to 16 time schedules with configurable dimming levels.

Note: When controlling with the Wisier Room App be in the same room and within a range of 8-10 m of the dimmer. Range can be affected by walls and other structures.

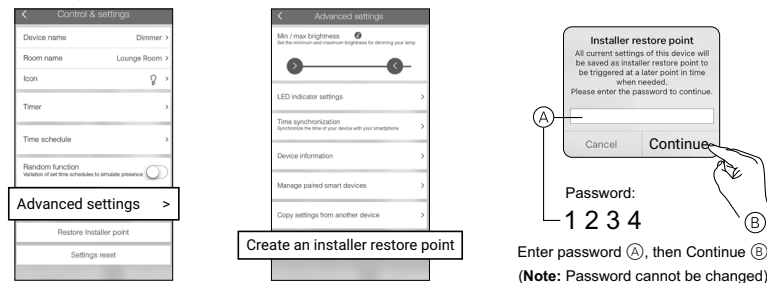
Adjusting the minimum brightness level



Changing the LED indicator behaviour

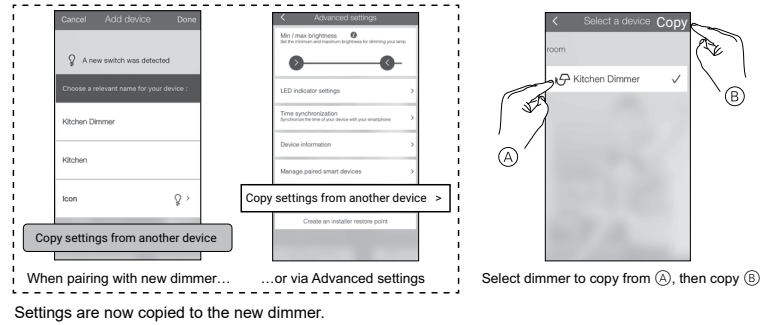


Creating an Installer restore point



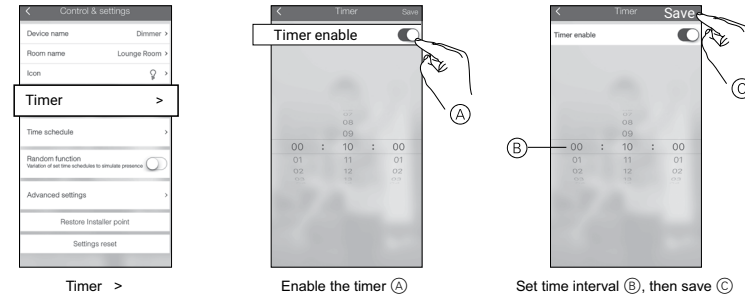
'Copy and paste' settings from another dimmer

Note: Settings can only be copied from a dimmer of the exact same model.

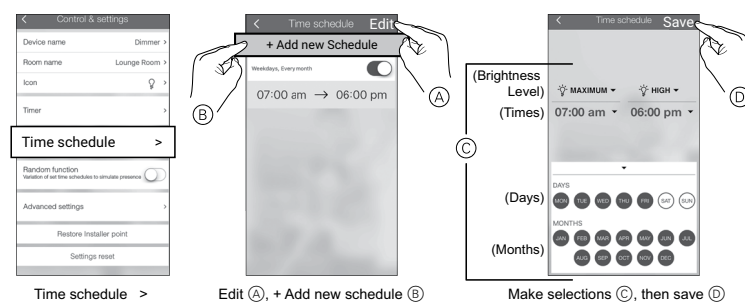


Setting/Adjusting the timer

Note: When the timer is operating, time schedules are suspended.

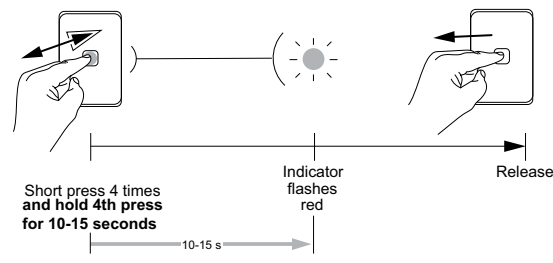


Setting a time schedule



Restoring the dimmer to factory defaults

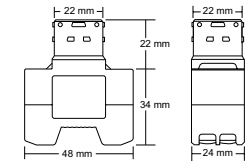
Note: All customised dimmer settings and bluetooth pairing information will be lost.



Technical data

Note: See product data sheet for full specifications. Specifications typical at 25 °C.

Operating voltage	220–240 V a.c., 50 Hz
Load rating	Minimum 10 W > Max. 300 W
Design	3-wire
Load connection	LED indicator flashes in the event of load disconnection or failure.
Multi-way limits	Max. 5-way dimming (Max. 3 Push-Button Dimmers + remainder ControlLink Modules.)
Multi-way interface	ControlLink
Compatible plate ranges	Iconic, Iconic Styl, Iconic Essence, Pro Series
Colour	VW: Vivid White XW: Extra White
ControlLink cable limit	Max. 50 m for entire circuit
Dimming range	Min. 0%, Max. 100% (depending on load)
Power failure data retention	Internal date/time retained for up to 6 hrs. Settings preserved indefinitely.
Environmental rating	IP20 (designed for indoor use only)
Operating humidity	5%–90% RH, non-condensing
Compliance	AS/NZS 60669.2.1, AS/NZS CISPR-15
There are no user serviceable parts inside	



Customer care

Warranty information

We warrant this product for 2 years—for details visit: www.schneider-electric.com.au/en/about-us/legal/terms-and-conditions.jsp



Schneider Electric (Australia) Pty Ltd

33-37 Port Wakefield Road, Gepps Cross SA 5094

Customer Care: 13 73 28

Email: customercare.au@se.com

www.schneider-electric.com.au

Schneider Electric reserves the right to change specifications, modify designs and discontinue items without incurring obligation and whilst every effort is made to ensure that descriptions, specifications and other information in these instructions are correct, no warranty is given in respect thereof and the company shall not be liable for any error therein.

© Schneider Electric 2019

This material is copyright under Australian and international laws. Except as permitted under the relevant law, no part of this work may be reproduced by any process without prior written permission of and acknowledgment to Schneider Electric.