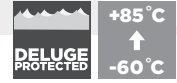
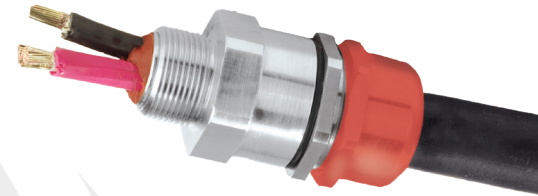


PXSS2K

PXSS2K DOUBLE SEAL, GLOBALLY APPROVED, EXPLOSIVE ATMOSPHERE BARRIER CABLE GLAND

FOR ALL TYPES OF UNARMoured & BRAIDED CABLES

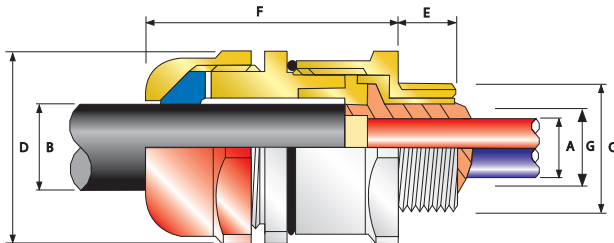
- Direct and remote installation
- Superior levels of cable retention
- Displacement type environmental seal
- Compound barrier type flameproof seal
- Deluge protected
- -60°C to +85°C
- Globally marked, UL, cCSAus, IECEx, ATEX and UKEX
- Compound barrier seals around internal cable cores after removing any inner cable sheath/bedding; completely eliminating any risk of coldflow



TECHNICAL CLASSIFICATION	
DESIGN SPECIFICATION	BS 6121:Part 1:1989, IEC 62444, EN 62444
MECHANICAL CLASSIFICATION*	Impact = Level 8, Cable Anchorage = Type B
ENCLOSURE PROTECTION	IK10 to IEC 62262 (20 joules) Brass and Stainless Steel only
INGRESS PROTECTION RATING**	IP66, IP67 and IP68****
NEMA RATING**	Type 4X
DELUGE PROTECTION COMPLIANCE	DTS01 : 91
CABLE TYPE	Unarmoured***
SEAL MATERIAL	CMP SOLO LSF Halogen Free Thermoset Elastomer / Epoxy Barrier Compound
SEALING TECHNIQUE	CMP Displacement Seal
SEALING AREA(S)	Inner Compound Barrier and Outer Sheath
CABLE GLAND MATERIAL	Brass, Electroless Nickel Plated Brass, Stainless Steel, Aluminium

GLOBAL PRODUCT CERTIFICATION			
ATEX CERTIFICATE	CML18ATEX1325X, CML18ATEX4317X	IECEx CERTIFICATE	IECEx CML 18.0182X
UKEX CERTIFICATE	CML 21UKEX1214X, CML 21UKEX4215X		
CODE OF PROTECTION	⊗ II 2G TD, Ex db IIC Gb, Ex eb IIC Gb, Ex ta IIC Da ⊗ II 3G, Ex nR IIC Gc, ⊗ I M2 Ex db I Mb*, Ex eb I Mb*	CODE OF PROTECTION	Ex db IIC Gb, Ex eb IIC Gb, Ex nR IIC Gc, Ex ta IIC Da, Ex db I Mb*, Ex eb I Mb*
COMPLIANCE STANDARDS	EN 60079-0, 1, 7, 15, 31	COMPLIANCE STANDARDS	IEC 60079-0, 1, 7, 15, 31
cCSAus CERTIFICATE	2288626		
CSAus CODE OF PROTECTION***	Class I, Div 1 and 2, Groups A, B, C, and D; Class II, Div 1 and 2, Groups E, F, and G; Class III, Div 1 and 2, Type 4X; Oil Resistance II, Class I, Zone 1, AEx d IIC Gb, AEx e IIC Gb; Class I, Zone 2, AEx nR IIC Gc; Class I, Zone 20, AEx ta IIC Da		
cCSA CODE OF PROTECTION***	Class I, Div 1 and 2, Groups A, B, C, and D; Class II, Div 1 and 2, Groups E, F, and G; Class III, Div 1 and 2, Type 4X; Oil Resistance II; Ex d IIC Gb, Ex e IIC Gb, Ex nR IIC Gc, Ex ta IIC Da		
COMPLIANCE STANDARDS	CAN/CSA-C22.2 No. 0, 18, 25, 30, 174, 94; CAN/CSA-60079-0, 1, 7, 15, 31; CAN/CSA-E61241-1-1; ANSI/UL 514B, ANSI/UL 50, ANSI/UL 2225, UL 60079-0, 1, 7, 15		
cULus CERTIFICATE (20S-90)	E201187, E161256		
CODE OF PROTECTION**	Class I, Div 1 and 2, Groups A, B, C, and D; Class II, Div 1 and 2, Groups F and G		
UL CERTIFICATE (20S-90)	E253914		
CODE OF PROTECTION**	Class I, Zone 1, AEx d IIC, AEx e II		
COMPLIANCE STANDARDS	UL 2225, UL 514B, UL 60079-0, UL 60079-7, CSA C22.2 No. 174		
KCS KOSHA CERTIFICATE	14-GA4B0-0252X	ECAS CERTIFICATE	20-02-05624
EAC CERTIFICATE	EAC3RUJ-CGBA007B04595/22	UK:SEPRO CERTIFICATE	CL19.0371X
RETE APPROVAL NUMBER	03866	CCOE / PESO (INDIA) CERTIFICATE	P533772, P548696, P548695
CCC CERTIFICATE	2020322313003190	INMETRO APPROVAL	TUV 12.2073X
SANS	MS-XPL/21.0305 X		
MARINE APPROVALS	LRS: LR22320739TA, DNV: TAE000000Y, ABS: 20-LD1948801-PDA, BV: 43180		

* Mechanical and Electrical Classifications applied as per IEC 62444 and EN 62444 ** When CMP installation accessories are used. Refer to www.cmp-products.com for further information. ***Where the cable is permitted by code (NEC and/or CEC) **** IP68 tested to a minimum depth of 30 metres for 12 hours, alternative depths / durations can be provided upon request.



*Aluminium alloys are not permitted in Group I mining applications
**Where the cable is permitted by code (NEC and/or CEC)



COMBINED ORDERING REFERENCE			AVAILABLE ENTRY THREADS 'C' (ALTERNATIVE METRIC THREAD LENGTHS AVAILABLE)					NUMBER OF CORES	DIAMETER OVER CONDUCTORS 'A'	CABLE BEDDING DIAMETER 'G'	OVERALL CABLE DIAMETER 'B'		ACROSS FLATS 'D'	ACROSS CORNERS 'D'	PROTRUSION LENGTH 'F'	SHROUD	CABLE GLAND WEIGHT (kg)
			STANDARD			OPTION					MIN	MAX					
SIZE	TYPE	ORDERING SUFFIX	METRIC	MIN THREAD LENGTH (METRIC) 'E'	NPT	THREAD LENGTH (NPT) 'E'	NPT	MAX	MAX	MAX	MIN	MAX	MAX	MAX			
20S16	PXSS2K	1RA	M20	15.0	1/2"	19.9	3/4"	21	8.6	8.6	3.1	8.6	30.0	33.0	53.1	PVC06	0.20
20S	PXSS2K	1RA	M20	15.0	1/2"	19.9	3/4"	21	11.7	11.7	6.1	11.7	30.0	33.0	53.1	PVC06	0.20
20	PXSS2K	1RA	M20	15.0	1/2"	19.9	3/4"	21	12.6	12.9	6.5	14.0	30.0	33.0	54.2	PVC06	0.20
20L	PXSS2K	1RA	M20	15.0	1/2"	19.9	3/4"	21	12.6	12.9	10.5	15.9	30.0	33.0	54.2	PVC06	0.20
25	PXSS2K	1RA	M25	15.0	3/4"	20.2	1"	30	17.5	17.9	11.1	20.0	36.0	39.6	60.0	PVC09	0.33
32	PXSS2K	1RA	M32	15.0	1"	25.0	1 1/4"	38	23.6	23.9	17.0	26.3	41.0	45.1	61.1	PVC10	0.59
32L	PXSS2K	1RA	M32	15.0	1"	25.0	1 1/4"	38	23.6	23.9	20.0	27.4	41.0	45.1	61.1	PVC10	0.59
40	PXSS2K	1RA	M40	15.0	1 1/4"	25.6	1 1/2"	59	30.0	30.3	22.0	32.1	50.0	55.0	62.4	PVC13	0.56
50S	PXSS2K	1RA	M50	15.0	1 1/2"	26.1	2"	89	36.6	36.9	29.5	38.2	55.0	60.5	65.2	PVC15	0.66
50	PXSS2K	1RA	M50	15.0	2"	26.9	2 1/2"	115	41.0	41.3	35.6	44.0	60.0	66.0	67.6	PVC18	0.73
63S	PXSS2K	1RA	M63	15.0	2"	26.9	2 1/2"	115	47.9	48.4	40.1	49.9	70.0	77.0	71.1	PVC21	1.07
63	PXSS2K	1RA	M63	15.0	2 1/2"	39.9	3"	115	53.7	54.0	47.2	55.9	75.0	82.5	70.4	PVC23	1.06
75S	PXSS2K	1RA	M75	15.0	2 1/2"	39.9	3"	140	59.9	60.2	52.8	61.9	80.0	88.0	75.3	PVC25	1.30
75	PXSS2K	1RA	M75	15.0	3"	41.5	3 1/2"	140	64.3	64.2	59.1	67.9	85.0	93.5	74.9	PVC27	1.30
90	PXSS2K	1RA	M90	20.0	3 1/2"	42.8	4"	140	75.3	75.6	66.6	79.4	108.0	118.8	94.8	PVC31	3.02
100	PXSS2K	1RA	M100	20.0	3 1/2"	42.8	4"	200	83.6	85.9	76.0	90.9	123.0	135.3	86.3	LSF33	4.00

*For material options add the following suffix to the ordering reference; Brass (no suffix required); Nickel Plated Brass 'S'; 316 Grade Stainless Steel '4'; Copper Free Aluminium '1'
For NPT options add the following digits to the material suffix; 1/2" = 31; 3/4" = 32; 1" = 33; 1 1/4" = 34; 1 1/2" = 35; 2" = 36; 2 1/2" = 37; 3" = 38; 3 1/2" = 39; 4" = 310 (Brass requires prefix '0')

Examples: 32PXSS2K1RA534 = Nickel Plated Brass 1 1/4" NPT, 50SPXSS2K1RA035 = Brass 1 1/2" NPT, 25PXSS2K1RA432 = Stainless Steel 3/4" NPT, 20PXSS2K1RA5 = Nickel Plated Brass M20
Dimensions are displayed in millimetres unless otherwise stated

Dimensions listed are for metric cable glands only. Dimensions for alternative threads may vary.