

- Environmentally sealed – IP68, IP6K9K, when installed to manufacturer's specifications.
- 2, 3, 4, 6, 8 and 12 cavity arrangements.
- Latched mating.
- Wedgelocks ensure contact alignment and retention.
- Accepts size 16 contacts, each with 13A continuous capacity.
- Available in kits with Solid Green Band, Solid – Gold plated, and F-Crimp contact options.
- CAT-Spec kit option.
- Kits available containing all components required to make one (half kits), or both sides of a connection.
- The PO12 enhanced seal is now standard for the DT Series 2 & 3 cavity plugs.

Housing :	Thermoplastic
Seal :	Silicon Rubber
Wedglock :	Thermoplastic
Contact Size :	16
Contact Rating :	13A @ 125°C
Shock :	50G
Vibration :	20G rms 10 – 2000Hz
Approvals :	20mm Flame Test per Standard UL-94
Ingress Protection :	IP68, IP6K9K
Operating Temperature :	-55°C to 125°C

Part Numbering System

DT 04 – 08 P A – L012

Series Prefix :
DT Series – **DT**

Connector Style :



Receptacle – **04**



Plug – **06**

Number of Cavities :

- 2
- 3
- 4
- 6
- 08
- 12

Popular Special Modifications :

- blank* – No modification.
- C015** – Reduced diameter seal (E Seal).
- E004** – Black connector body.
- E005** – Protective end cap. Black.
- E008** – Heat shrink adaptor.
- EP06** – Enhanced front seal (PO12) and end cap.
- EP08** – Enhanced front seal (PO12) and end cap. Black.
- L012** – Flange Mount receptacle.
- P012** – Enhanced front seal.

For a complete list of special modifications contact your nearest reseller.

Keying Options :

- blank* – no keying
- A** – Grey housing
- B** – Black housing
- C** – Green housing
- D** – Brown housing

Keying Option is only available with 08 and 12 cavity housings.

P – Pins
S – Sockets Contact Type

2 & 3 Cavity Plugs & Wedgelocks



The PO12 enhanced seal is now standard for the DT Series 2 & 3 cavity plugs.
The orange 2 & 3 cavity wedgelocks are no longer used, replaced with the green PO12 wedgelocks.

DT0X-2X



2 x size 16

DT0X-3X



3 x size 16

DT0X-4X



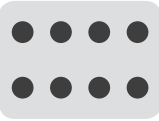
4 x size 16

DT0X-6X



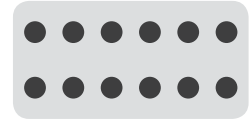
6 x size 16

DT0X-08XX



8 x size 16
A, B, C, D

DT0X-12 XX



12 x size 16
A, B, C, D

DT Series – Popular Components

Circuits	Receptacle Components			Circuits	Plug Components		
	Housing	Wedgelock	Size 16 Pin – Nickel		Housing	Wedgelock	Size 16 Socket – Nickel
2	DT04-2P	W2P	0460-202-16141 AWG16-20 / 0.5-1.0mm ²	2	DT06-2S	W2S-PO12	0462-201-16141 AWG16-20 / 0.5-1.0mm ²
3	DT04-3P	W3P		3	DT06-3S	W3S-PO12	
4	DT04-4P	W4P	Green Band	4	DT06-4S	W4S	Green Band
6	DT04-6P	W6P	0460-215-16141 AWG14 / 1.0-2.0mm ²	6	DT06-6S	W6S	0462-209-16141 AWG14 / 1.0-2.0mm ²
8	DT04-08PA	W8P		8	DT06-08SA	W8S	
12	DT04-12-PA	W12P	114017 Sealing Plug	12	DT06-12SA	W12S	114017 Sealing Plug

For complete details on contacts & further options see page 63.

'CAT-Spec' Modifications



DT04-3P-E005

DT06-6S-EPO6

DT06-12SA-EPO8

Black.
Rear end cap.
Improved seal retention (plugs).

The DT Series connector housings with suffix E005, EPO6 & EPO8 are typically referred to as 'CAT-Spec', short for CATERPILLAR Specification.

These modified housings are used on most CATERPILLAR mining machinery as an OEM standard connector.

At a glance, they are black and feature a cap on the rear to retain the connectors' rear wire seal. The plugs include improved seal retention by using the PO12 wedgelock.

E005 – Receptacles only. Black.

EPO6 – Plugs only. 2, 3, 4 & 6 cavity are black. 8 & 12 cavity are grey – this makes them exempt from being 'CAT-Spec'.

EPO8 – Plugs only. 8 & 12 cavities only. Black.

Popular Special Modifications

E008

Heat shrink adaptor.

DT04-2P-E008



C015

Reduced diameter seal (E Seal) cavity for use with thin wall cable.

DT04-4P-C015



L012

Flange mount receptacle.



DT04-2P-L012

Shown with W6S-PO12 wedgelock



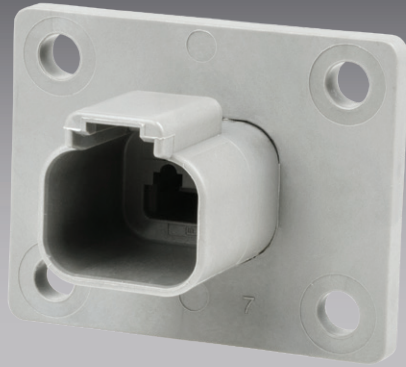
DT06-6S-PO12

PO12

Enhanced front seal. Provides an ultra tight environmental seal. Used in conjunction with PO12 wedgelocks to enhance seal retention during mating and unmating.

Black housing excluding 8 and 12 cavity, where the colour is based on keying.

All 2 & 3 cavity DT Series connectors now feature the PO12 seal as standard. All 2 & 3 cavity wedgelocks are PO12 (green) as standard.

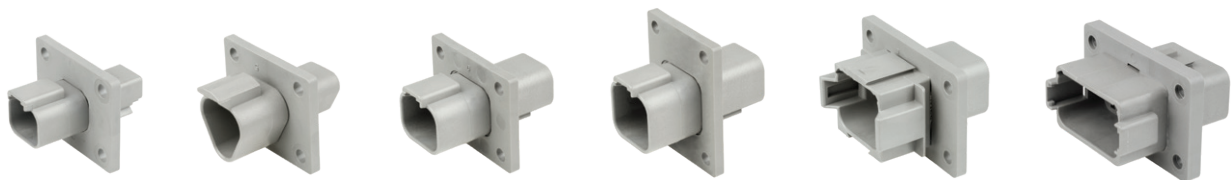


DT04-2P-LO12

- Environmentally sealed – IP68, IP6K9K, when installed to manufacturer's specifications.
- 2, 3, 4, 6, 8 and 12 cavity arrangements.
- Latched mating.
- Accepts size 16 contacts, each with 13A continuous capacity.



Housing : Thermoplastic
Seal : Silicon Rubber
Wedglock : Thermoplastic
Contact Size : 16
Contact Rating : 13A @ 125°C
Shock : 50G
Vibration : 20G rms 10 – 2000Hz
Approvals : 20mm Flame Test per Standard UL-94
Ingress Protection : IP68, IP6K9K
Operating Temperature : -55°C to 125°C



DT Series – Flange Mount (LO12)

		No. of Cavities					
		2	3	4	6	8	12
		DT04-2P-LO12	DT04-3P-LO12	DT04-4P-LO12	DT04-6P-LO12	DT04-08PA-LO12	DT04-12PA-LO12



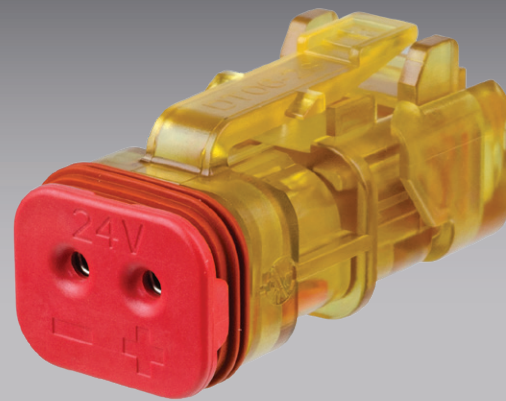
DT Series – Flange Mount – Gaskets NEW

		No. of Cavities					
		2	3	4	6	8	12
		—	DT3P-LO12-GKT	DT4P-LO12-GKT	—	DT8P-LO12-GKT	DT12P-LO12-GKT

NEW

DT Detector Half Kits

- Transparent housing with integrated LED on wedgelock for quick circuit diagnosis.
- Colour coded wedgelocks for operating voltages, 12V (yellow) and 24V (red).
- Joint retention fingers allow both contacts to be removed at the same time.
- Compatible with Pulse Width Modulated control.
- Sold as complete kit including nickel plated or green band contacts.
- Environmentally sealed – IP68, IP6K9K, when installed to manufacturer's specifications.
- Industry proven DT Series.
- Latched mating.



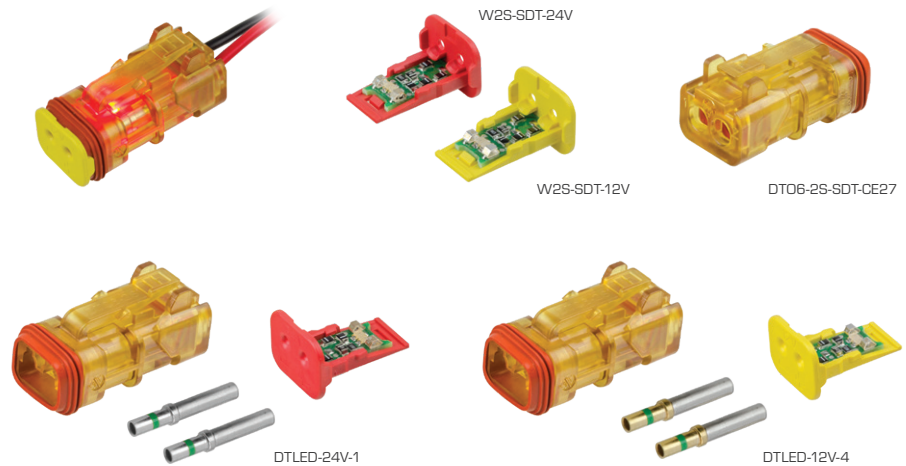
Housing : Ultem
Seal : Silicon Rubber
Wedgelock : Thermoplastic
Contact Size : 16
Contact Rating : 13A @ 125°C
Shock : 50G
Vibration : 20G rms 10 – 2000Hz
Approvals : 20mm Flame Test per Standard UL-94
Ingress Protection : IP68, IP6K9K
Operating Temperature : -55°C to 125°C



Half Kits

Half Kits contain all components to make one half of a connection.

Each kit contains 2 x contacts and a DT Detector receptacle with a DT Detector Wedgelock.



DT Detector Half Kits NEW

Part No.	Voltage	Wedgelock Colour	Socket Type	Wire Size	
				AWG	mm ²
DTLED-12V-1	12	Yellow	0462-209-16141 – Green Band, Nickel Plating	14	1.0 – 2.0
DTLED-24V-1	24	Red	0462-209-16141 – Green Band, Nickel Plating	14	1.0 – 2.0
DTLED-12V-3	12	Yellow	0462-201-16141 – Nickel Plating	16 – 20	0.5 – 1.0
DTLED-24V-3	24	Red	0462-201-16141 – Nickel Plating	16 – 20	0.5 – 1.0
DTLED-12V-4	12	Yellow	0462-209-1631 – Green Band, Gold Plating	14	1.0 – 2.0
DTLED-24V-4	24	Red	0462-209-1631 – Green Band, Gold Plating	14	1.0 – 2.0

Kits Contain:
 1 x DT Detector Receptacle (DT06-2S-SDT-CE27)
 1 x DT Detector Wedgelock (W2S-SDT-12V or W2S-SDT-24V)
 2 x Solid Socket



DEUTSCH



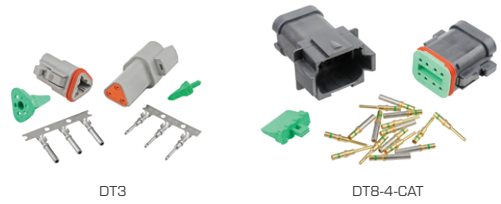
DT Series – Pack Quantities – Housings NEW

Receptacles						Plugs						
Cavities	Part No.	10	50	100	Bulk Box	Cavities	Part No.	10	50	100	Bulk Box	
2	DT04-2P	●	●	●	1000	2	DT06-2S	●	●	●	1800	
	DT04-2P-C015	●	—	—	1000		DT06-2S-C015	●	●	—	1800	
	DT04-2P-E005	●	●	●	950		DT06-2S-E008	●	●	●	1200	
	DT04-2P-E008	●	●	●	800		DT06-2S-EP06	●	●	●	1600	
	DT04-2P-L012	●	●	—	400							
3	DT04-3P	●	●	●	850	3	DT06-3S	●	●	●	1400	
	DT04-3P-C015	●	—	—	850		DT06-3S-C015	●	●	—	1400	
	DT04-3P-E005	●	●	●	800		DT06-3S-E008	●	●	●	900	
	DT04-3P-E008	●	●	●	600		DT06-3S-EP06	●	●	●	1200	
	DT04-3P-L012	●	●	—	450		DT06-3S-EP09	●	—	●	1100	
	DT04-3P-P006	●	●	●	750		DT06-3S-EP11	●	—	—	900	
	DT04-3P-P007	●	●	—	200		DT06-3S-P006	●	—	—	1000	
					DT06-3S-PP01	●	—	—	1000			
4	DT04-4P	●	●	●	700	4	DT06-4S	●	●	●	1200	
	DT04-4P-C015	●	●	—	700		DT06-4S-E008	●	—	●	800	
	DT04-4P-E005	●	●	●	700		DT06-4S-EP06	●	●	●	1000	
	DT04-4P-E008	●	●	●	500							
	DT04-4P-EP13	●	—	●	700							
	DT04-4P-L012	●	●	—	350							
6	DT04-6P	●	●	●	600	6	DT06-6S	●	●	●	900	
	DT04-6P-C015	●	—	—	600		DT06-6S-C015	●	—	—	900	
	DT04-6P-E005	●	●	●	500		DT06-6S-E008	●	●	●	550	
	DT04-6P-E008	●	●	—	450		DT06-6S-EP06	●	●	●	800	
	DT04-6P-EP13	●	—	—	500							
	DT04-6P-EP14	●	—	—	500							
	DT04-6P-L012	●	●	—	400							
8	DT04-08PA	●	●	●	350	8	DT06-08SA	●	●	●	550	
	DT04-08PA-C015	●	—	—	350		DT06-08SA-C015	●	—	—	550	
	DT04-08PA-E005	●	●	—	300		DT06-08SA-E008	●	●	—	400	
	DT04-08PA-E008	●	—	—	250		DT06-08SA-EP06	●	—	—	500	
	DT04-08PA-L012	●	—	—	200		DT06-08SA-EP08	●	●	—	500	
12	DT04-12PA	●	●	—	300	12	DT06-12SA	●	●	—	500	
	DT04-12PA-C015	●	—	—	300		DT06-12SA-C015	●	—	—	500	
	DT04-12PA-E005	●	●	—	250		DT06-12SA-E008	●	●	—	350	
	DT04-12PA-E008	●	—	—	250		DT06-12SA-EP06	●	—	—	450	
	DT04-12PA-L012	●	—	—	200		DT06-12SA-EP08	●	●	—	450	
	DT04-12PB	●	—	—	300		DT06-12SB	●	—	—	500	
							DT06-12SB-EP06	●	—	—	450	
					DT06-12SC	●	—	—	500			
					DT06-12SD	●	—	—	500			

Bulk Boxes are available for the complete range of DEUTSCH upon request, lead times may apply.

Size 16 Green Band Contacts

Size 16 solid contacts are available to suit 2 wire sizes.
 Contacts with the **Green Band** marking accept the larger wire size of AWG14 / 1.0 – 2.0mm².



DT3

DT8-4-CAT

DT Series – Pack Quantities – Kits NEW

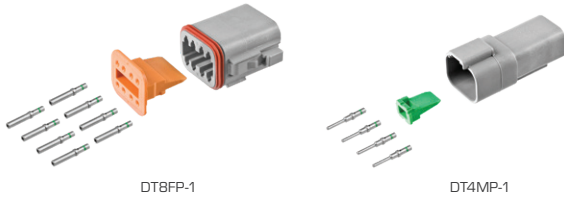
Cavities	Connector Type	Contact Type (Size 16)	Part No.	10	100	500	1000
2	Standard	F-Crimp	DT2	—	—	—	—
		Solid – Green Band	DT2-1	●	●	●	●
		Solid	DT2-3	—	—	—	—
		Solid – Green Band Gold Plated	DT2-4	—	—	—	—
	Standard – A Keying	Solid – Green Band	DT2A-1	—	—	—	—
	Heat Shrink Adaptor	Solid – Green Band	DT2-1-E008	—	—	—	—
	Black	Solid – Green Band	DT2-1B	—	—	—	—
	Black – A Keying	Solid – Green Band	DT2A-1B	—	—	—	—
	CAT-Spec	Solid – Green Band	DT2-1-CAT	—	—	—	—
		Solid – Green Band Gold Plated	DT2-4-CAT	—	—	—	—
3	Standard	F-Crimp	DT3	—	—	—	—
		Solid – Green Band	DT3-1	●	●	●	—
		Solid	DT3-3	—	—	—	—
	CAT-Spec	Solid – Green Band Gold Plated	DT3-4	—	—	—	—
		Solid – Green Band	DT3-1-CAT	—	—	—	—
		Solid – Green Band Gold Plated	DT3-4-CAT	—	—	—	—
4	Standard	F-Crimp	DT4	—	—	—	—
		Solid – Green Band	DT4-1	●	●	●	—
		Solid	DT4-3	—	—	—	—
	CAT-Spec	Solid – Green Band Gold Plated	DT4-4	—	—	—	—
		Solid – Green Band	DT4-1-CAT	—	—	—	—
		Solid – Green Band Gold Plated	DT4-4-CAT	—	—	—	—
6	Standard	F-Crimp	DT6	—	—	—	—
		Solid – Green Band	DT6-1	●	●	—	—
		Solid	DT6-3	—	—	—	—
	CAT-Spec	Solid – Green Band Gold Plated	DT6-4	—	—	—	—
		Solid – Green Band	DT6-1-CAT	—	—	—	—
		Solid – Green Band Gold Plated	DT6-4-CAT	—	—	—	—
8	Standard	F-Crimp	DT8	—	—	—	—
		Solid – Green Band	DT8-1	●	●	—	—
		Solid	DT8-3	—	—	—	—
	CAT-Spec	Solid – Green Band Gold Plated	DT8-4	—	—	—	—
		Solid – Green Band	DT8-1-CAT	—	—	—	—
		Solid – Green Band Gold Plated	DT8-4-CAT	—	—	—	—
12	Standard	F-Crimp	DT12	—	—	—	—
		Solid – Green Band	DT12-1	●	●	—	—
		Solid	DT12-3	—	—	—	—
	CAT-Spec	Solid – Green Band Gold Plated	DT12-4	—	—	—	—
		Solid – Green Band	DT12-1-CAT	—	—	—	—
		Solid – Green Band Gold Plated	DT12-4-CAT	—	—	—	—

Kit Contents:

- Receptacle & Wedgelock
- Plug & Wedgelock
- Contacts – Pin
- Contacts – Socket



DEUTSCH

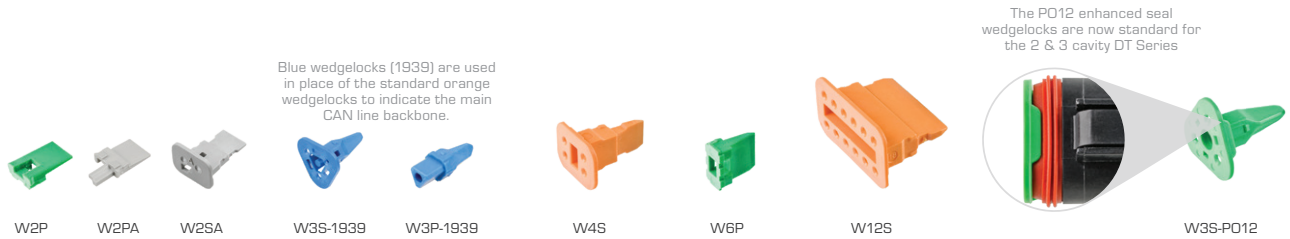


Half Kits
 Half Kits contain all components to make one half of a connection.
 Each kit contains **Green Band** contacts and a standard DT Series housing with appropriate wedgelock.

DT Series – Half Kits NEW

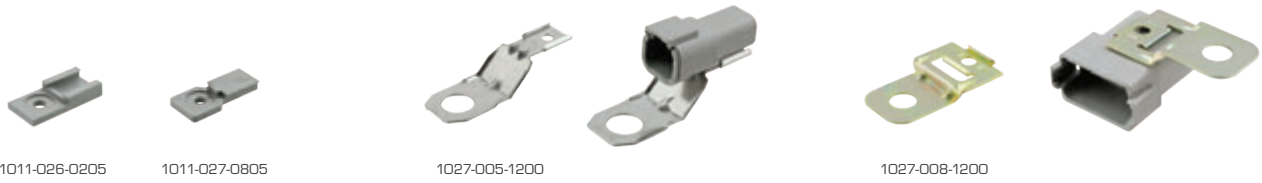
Style	Contact Type (Size 16)	No. of Cavities					
		2	3	4	6	8	12
Receptacle	Solid – Green Band	DT2MP-1	DT3MP-1	DT4MP-1	DT6MP-1	DT8MP-1	DT12MP-1
Plug	Solid – Green Band	DT2FP-1	DT3FP-1	DT4FP-1	DT6FP-1	DT8FP-1	DT12FP-1

- Kit Contents:
- Receptacle or Plug
 - Wedgelock
 - Contacts – Pin or Socket



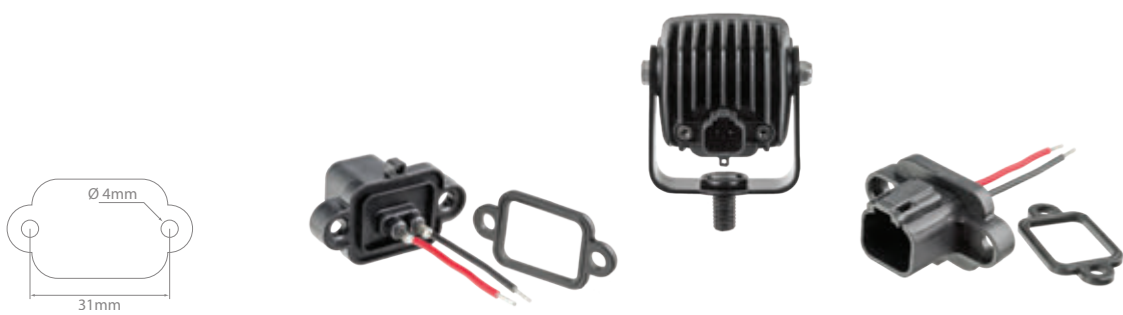
DT Series – Pack Quantities – Wedgelocks NEW

Cavities	Type	Suits	Part No.	10	50	100	1000	Bulk Box
2	Standard	Receptacles	W2P	•	•	•	•	22,000
	Enhanced Seal	Plugs	W2S-PO12	•	•	•	•	8000
	A Keying	Receptacles	W2PA	—	—	—	—	—
	A Keying	Plugs	W2SA	—	—	—	—	—
3	Standard	Receptacles	W3P	•	•	•	•	20,000
	Enhanced Seal	Plugs	W3S-PO12	•	•	•	•	6000
	J1939	Plugs	W3S-1939	•	•	•	—	—
	J1939	Receptacles	W3P-1939	•	•	•	—	—
4	Standard	Receptacles	W4P	•	•	•	—	15,000
	Standard	Plugs	W4S	•	•	•	—	5000
	Enhanced Seal	Plugs	W4S-PO12	•	•	•	—	—
6	Standard	Receptacles	W6P	•	•	•	—	10,000
	Standard	Plugs	W6S	•	•	•	—	3500
	Enhanced Seal	Plugs	W6S-PO12	•	•	•	—	—
8	Standard	Receptacles	W8P	•	•	•	—	5000
	Standard	Plugs	W8S	•	•	•	—	2500
	Enhanced Seal	Plugs	W8S-PO12	•	•	•	—	—
12	Standard	Receptacles	W12P	•	•	•	—	5000
	Standard	Plugs	W12S	•	•	•	—	2000
	Enhanced Seal	Plugs	W12S-PO12	•	•	•	—	—



DT Series – Mounting Clips

Part No.	Suits	Mounting Direction	Colour / Material	Mounting Hole Ø (mm)
1011-026-0205	All except 8 cavity	Straight	Grey plastic	5
1011-027-0805	8 cavity connectors only	Straight	Grey plastic	5
1027-001-0800	8 cavity connectors only	Straight	Stainless steel	11
1027-003-1200	All except 8 cavity	Straight	Stainless steel	11
1027-005-1200	All except 8 cavity	Straight	Stainless steel	13
1027-008-1200	All except 8 cavity	Side	Zinc plated steel	11



DT Series – Special – Flange Mount Receptacle

Part No.	Description	Wire Length	Mating Plug
DT2-PM	2 pin flange mount receptacle with soldered wires and rubber sealing gasket	40mm	DT06-2S





DT Series – Accessories – Insulators/Boots

	Colour	No. of Cavities					
		2	3	4	6	8	12
Receptacles – 120mm	Black	DTB2P	DTB3P	DTB4P	DTB6P	DTB8P	DTB12P
Plugs – 120mm	Black	DTB2S	DTB3S	DTB4S	DTB6S	DTB8S	DTB12S
Receptacles – 65mm	Grey	DT2P-BT	DT3P-BT	DT4P-BT	DT6P-BT	DT8P-BT	DT12P-BT
Plugs – 65mm	Grey	DT2S-BT	DT3S-BT	DT4S-BT	DT6S-BT	DT8S-BT	DT12S-BT
Receptacles – 65mm	Black		DT3P-BT-BK				

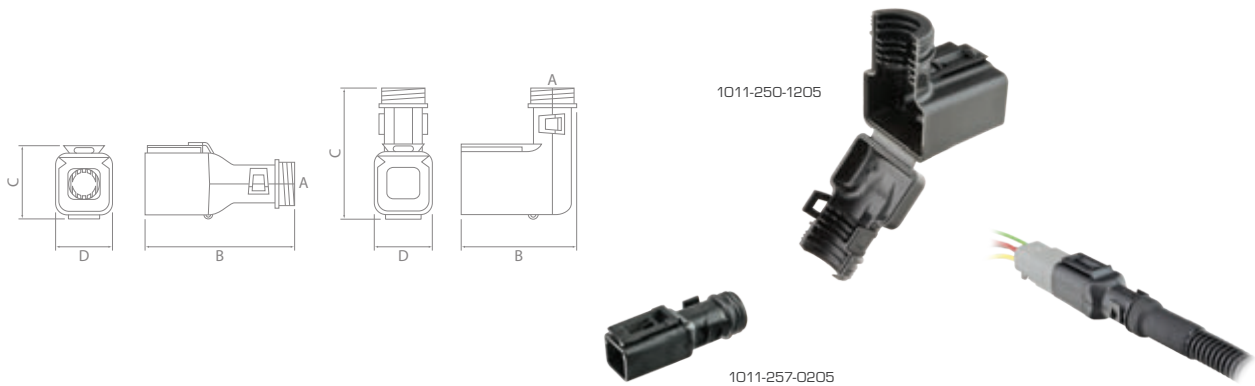


DT06-6S



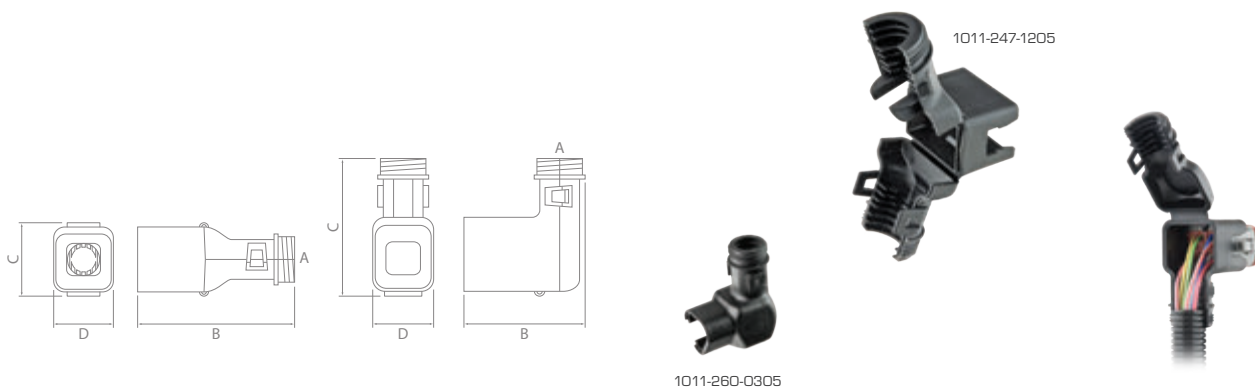
DT Series – Dust Caps

Part No.	No. of Cavities					
	2	3	4	6	8	12
Suits	DT06-2S	DT06-3S	DT06-4S	DT06-6S	DT06-8S	DT06-12S



DT Series – Backshells – Receptacles

Straight	90°	Suits	A (NW)	A (NC)	B (mm)	C (mm)	D (mm)
1011-257-0205	1011-258-0205	DT04-2P	7.5, 8.5, 10	8, 10, 12	55	20	45
1011-261-0305	1011-262-0305	DT04-3P	7.5, 8.5, 10	8, 10, 12	65	27	56
1011-265-0405	1011-266-0405	DT04-4P	7.5, 8.5, 10	8, 10, 12	59	24	53
1011-269-0605	1011-270-0605	DT04-6P	8.5, 10, 13	10, 12, 16	65	28	55
1011-245-0805	1011-246-0805	DT04-08P	8.5, 10, 13	10, 12, 16	62	30	57
1011-249-1205	1011-250-1205	DT04-12P	12, 13, 17	14, 16, 20	64	29	59

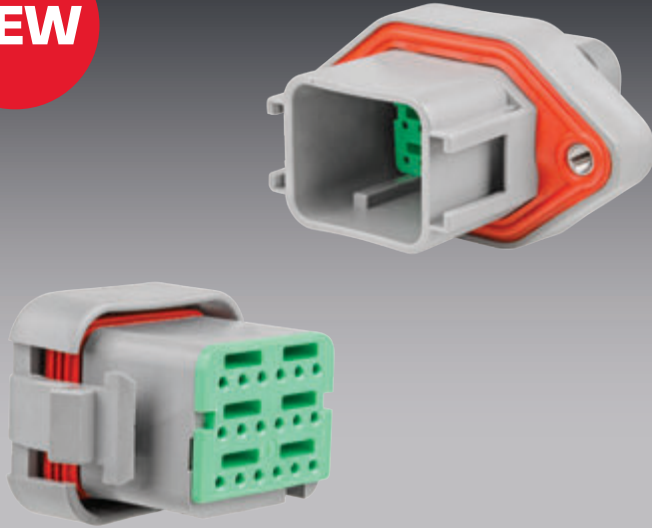


DT Series – Backshells – Plugs

Straight	90°	Suits	A (NW)	A (NC)	B (mm)	C (mm)	D (mm)
1011-255-0205	1011-256-0205	DT06-2S	7.5, 8.5, 10	8, 10, 12	42	37	32
1011-259-0305	1011-260-0305	DT06-3S	7.5, 8.5, 10	8, 10, 12	46	48	37
1011-263-0405	1011-264-0405	DT06-4S	7.5, 8.5, 10	8, 10, 12	44	45	35
1011-267-0605	1011-268-0605	DT06-6S	8.5, 10, 13	10, 12, 16	45	50	39
1011-243-0805	1011-244-0805	DT06-08S	8.5, 10, 13	10, 12, 16	49	51	41
1011-247-1205	1011-248-1205	DT06-12S	12, 13, 17	14, 16, 20	55	51	45



NEW

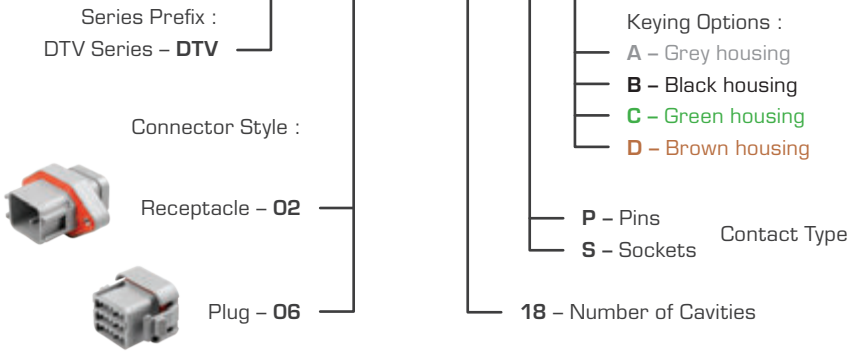


- 18 cavity arrangement.
- Protective end cap as standard.
- Environmentally sealed – IP68, IP6K9K, when installed to manufacturer's specifications.
- Accepts size 16 contacts, each with 13A continuous capacity.
- Flange mount receptacle.
- Rectangular, thermoplastic housing.
- Latched mating.
- Wedgelocks ensure contact alignment and retention.

Housing :	Thermoplastic
Seal :	Silicon Rubber
Wedglock :	Thermoplastic
Contact Size :	16
Contact Rating :	13A @ 125°C
Shock :	50G
Vibration :	20G rms 10 – 2000Hz
Approvals :	20mm Flame Test per Standard UL-94
Ingress Protection :	IP68, IP6K9K
Operating Temperature :	-55°C to 125°C

Part Numbering System

DTV 02 - 18 S A



For complete details on contacts & further options see page 63.



DTV02-18PA



DTV06-18SA



WV-18P

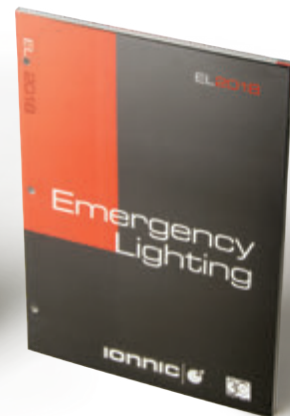


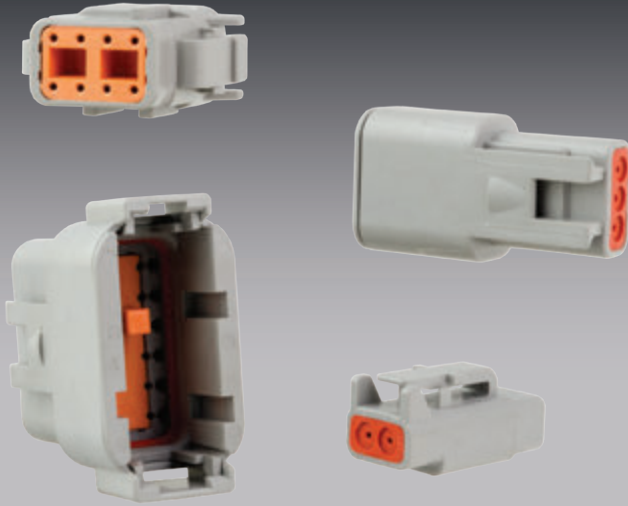
WV-18S

DTV Series **NEW**

A Keying	B Keying (Black housing)	Style	Wedglock
DTV02-18PA	DTV02-18PB	Receptacle	WV-18P
DTV06-18SA	DTV06-18SB	Plug	WV-18S

Catalogue Catalogues



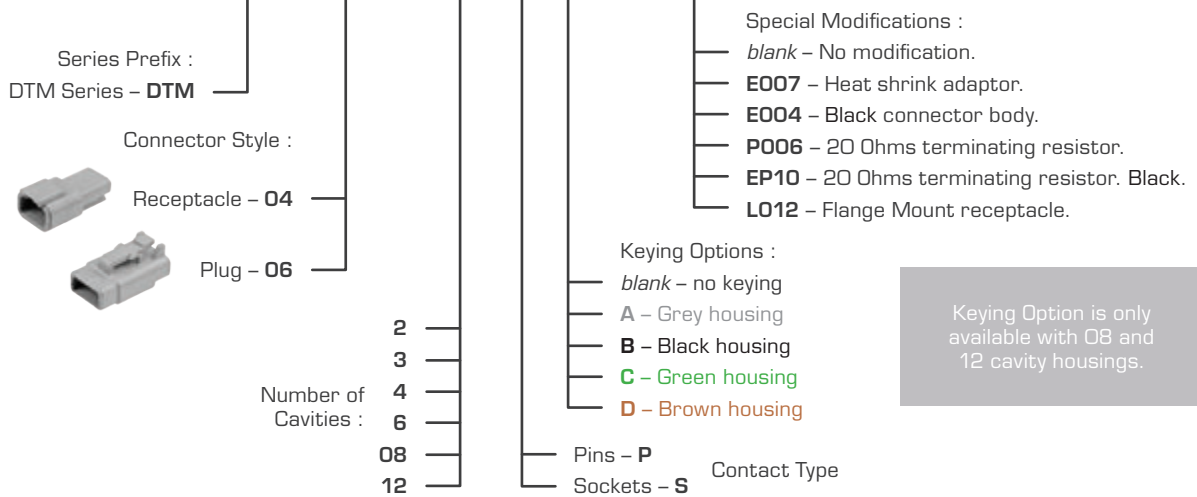


- Environmentally sealed – IP68, IP6K9K, when installed to manufacturer's specifications.
- 2, 3, 4, 6, 8 and 12 cavity arrangements.
- Latched mating.
- Wedgelocks ensure contact alignment and retention.
- Accepts size 20 contacts, each with 7.5A continuous capacity.
- Available in Kits with Solid, or Solid – Gold plated contact options.
- Each Kit contains all components required to make both sides of a connection.

Housing :	Thermoplastic
Seal :	Silicon Rubber
Wedglock :	Thermoplastic
Contact Size :	20
Contact Rating :	7.5A @ 125°C
Shock :	50G
Vibration :	20G rms 10 – 2000Hz
Approvals :	20mm Flame Test per Standard UL-94
Ingress Protection :	IP68, IP6K9K
Operating Temperature :	-55°C to 125°C

Part Numbering System

DTM 06 – 12 S A – E007



Special Modifications

E007

Heat shrink adaptor.

DTM04-2P-E007



E004

Black connector body.

DTM04-4P-E004



L012

Flange Mount receptacle.

P006

20 Ohms terminating resistor.

DTM04-2P-P006



EP10

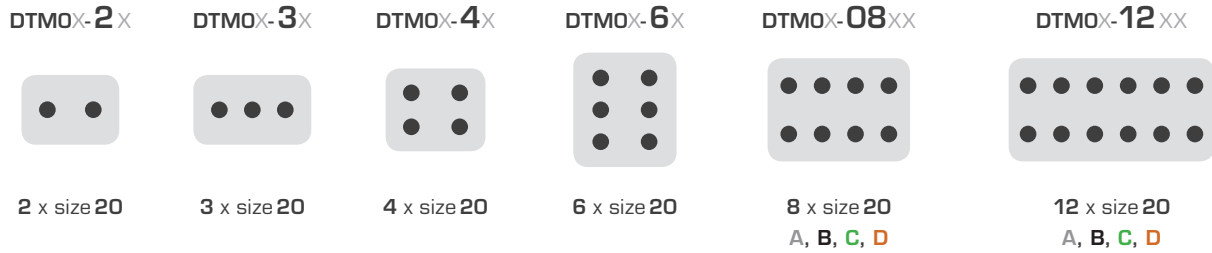
20 Ohms terminating resistor. Black.

DTM06-2S-EP10



DTM04-12PA-L012





DTM Series – Popular Components

Circuits	Receptacle Components			Plug Components		
	Housing	Wedglock	Size 20 Pin – Nickel	Housing	Wedglock	Size 20 Socket – Nickel
2	DTM04-2P	WM-2P	0460-202-20141 AWG20 / 0.2-0.5mm ²	DTM06-2S	WM-2S	0462-201-20141 AWG20 / 0.2-0.5mm ²
3	DTM04-3P	WM-3P		DTM06-3S	WM-3S	
4	DTM04-4P	WM-4P		DTM06-4S	WM-4S	
6	DTM04-6P	WM-6P		DTM06-6S	WM-6S	
8	DTM04-08PA	WM-8P	0413-204-2005 Sealing Plug	DTM06-08SA	WM-8S	0413-204-2005 Sealing Plug
12	DTM04-12PA	WM-12P		DTM06-12SA	WM-12S	

For complete details on contacts & further options see page 63.



DTM Series – Pack Quantities – Housings NEW

Cavities	Part No.	Receptacles				Cavities	Part No.	Plugs				
		10	50	100	Bulk Box			10	50	100	Bulk Box	
2	DTM04-2P	•	—	•	1200	2	DTM06-2S	•	•	•	3000	
	DTM04-2P-E007	•	—	—	1000		DTM06-2S-E007	•	•	—	2000	
	DTM04-2P-P006	•	—	—	1000							
	DTM04-2P-P007	•	—	—	200							
3	DTM04-3P	•	•	•	1000	3	DTM06-3S	•	•	•	2000	
4	DTM04-4P	•	•	•	800	4	DTM06-3S-E007	•	•	—	1400	
						4	DTM06-4S	•	•	—	1600	
							DTM06-4S-E004	•	—	—	1600	
6	DTM04-6P	•	•	•	650	6	DTM06-4S-E007	•	—	—	1200	
							6	DTM06-6S	•	•	—	1300
8	DTM04-08PA	•	—	—	500	8	DTM06-6S-E007	•	•	—	1000	
							8	DTM06-08SA	•	•	—	900
12	DTM04-12PA	•	—	—	350	12	DTM06-08SA-E007	•	—	—	600	
							12	DTM06-12SA	•	•	•	600
							DTM06-12SA-E007	•	—	—	500	
							DTM06-12SB	•	•	—	600	
							DTM06-12SC	•	—	—	600	
	DTM06-12SD	—	—	—	600							

Bulk Boxes are available for the complete range of DEUTSCH upon request, lead times may apply.





DTM Series – Kits

Contact Type	Size	Pack Quantity	No. of Cavities					
			2	3	4	6	8	12
Solid	20	1	DTM2-1	DTM3-1	DTM4-1	DTM6-1	DTM8-1	DTM12-1
		10	DTM2-1/10	DTM3-1/10	DTM4-1/10	DTM6-1/10	DTM8-1/10	DTM12-1/10
Solid – Gold Plated	20	1	DTM2	DTM3	DTM4	DTM6	DTM8	DTM12

- Kit Contents:
- Receptacle & Wedgelock
 - Plug & Wedgelock
 - Contacts – Pin
 - Contacts – Socket



DTM Series – Pack Quantities – Wedgelocks NEW

Cavities	Type	Suits	Part No.	10	50	100
2	Standard	Receptacles	WM-2P	•	•	•
	"A" Keyed	Receptacles	WM-2PA	—	—	—
	"B" Keyed	Receptacles	WM-2PB	—	—	—
	Standard	Plugs	WM-2S	•	•	•
	"A" Keyed	Plugs	WM-2SA	—	—	—
	"B" Keyed	Plugs	WM-2SB	—	—	—
3	Standard	Receptacles	WM-3P	•	•	•
	Standard	Plugs	WM-3S	•	•	•
4	Standard	Receptacles	WM-4P	•	•	•
	Standard	Plugs	WM-4S	•	•	•
6	Standard	Receptacles	WM-6P	•	•	•
	Standard	Plugs	WM-6S	•	•	•
8	Standard	Receptacles	WM-8P	•	•	•
	Standard	Plugs	WM-8S	•	•	•
12	Standard	Receptacles	WM-12P	•	•	•
	Standard	Plugs	WM-12S	•	•	•



DTM3S-BT

DTM Series – Accessories – Insulators/Boots

	Colour	No. of Cavities					
		2	3	4	6	8	12
Receptacles	Grey	DTM2P-BT	DTM3P-BT	DTM4P-BT	DTM6P-BT	DTM8P-BT	DTM12P-BT
Plugs	Grey	DTM2S-BT	DTM3S-BT	DTM4S-BT	DTM6S-BT	DTM8S-BT	DTM12S-BT



1011-026-0205



1011-027-0805



1027-005-1200



1027-008-1200



DTM Series – Mounting Clips

Part No.	Suits	Mounting Direction	Colour / Material	Mounting Hole Ø (mm)
1011-026-0205	All except 8 cavity	Straight	Grey plastic	5
1011-027-0805	8 cavity connectors only	Straight	Grey plastic	5
1027-001-0800	8 cavity connectors only	Straight	Stainless steel	11
1027-003-1200	All except 8 cavity	Straight	Stainless steel	11
1027-005-1200	All except 8 cavity	Straight	Stainless steel	13
1027-008-1200	All except 8 cavity	Side	Zinc plated steel	11



- Convenient on-site service kits containing assortments of DT, DTM Series connectors, contacts and Backshells.
- DTKIT-2 includes crimp tool and multi-use removal tool.
- Solid and Stamped & Formed (F-Crimp) contact kits available.
- Contents clearly listed.

Housing : Thermoplastic
Seal : Silicon Rubber
Wedgeloock : Thermoplastic
Contact : Copper Alloy
Contact Plating : Nickel
Shock : 50G
Vibration : 20G rms 10 – 2000Hz
Approvals : 20mm Flame Test per Standard UL-94
Ingress Protection : IP68, IP6K9K
Operating Temperature : -55°C to 125°C



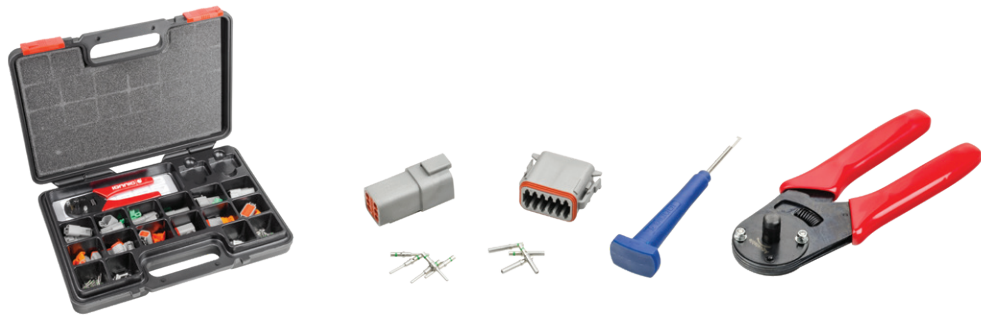
DTKIT



DTKIT-1

Assortment Kits – DT Series

Part No.	Description	Kit Contents		
DTKIT	F-Crimp contacts. Standard DT Series connectors.	Receptacles & Wedgelocks:	Plugs & Wedgelocks:	Contacts & Sealing Plugs:
		3 x DT04-2P 3 x DT04-3P 2 x DT04-4P 1 x DT04-6P 1 x DT04-08PA 1 x DT04-12PA	3 x DT06-2S 3 x DT06-3S 2 x DT06-4S 1 x DT06-6S 1 x DT06-08SA 1 x DT06-12SA	12 x 114017 Sealing Plugs 40 x 1060-16-0122L F-Crimp Pin 40 x 1062-16-0122L F-Crimp Socket
DTKIT-1	Solid contacts. Standard DT Series connectors.	Receptacles & Wedgelocks:	Plugs & Wedgelocks:	Contacts & Sealing Plugs:
		3 x DT04-2P 3 x DT04-3P 2 x DT04-4P 1 x DT04-6P 1 x DT04-08PA 1 x DT04-12PA	3 x DT06-2S 3 x DT06-3S 2 x DT06-4S 1 x DT06-6S 1 x DT06-08SA 1 x DT06-12SA	12 x 114017 Sealing Plugs 40 x 0460-215-16141 Solid Pin – Green Band 40 x 0462-209-16141 Solid Socket – Green Band



Assortment Kits – DT Series including Tools

Part No.	Description	Kit Contents		
DTKIT-2	Solid contacts.	Receptacles & Wedgelocks:	Plugs & Wedgelocks:	Contacts & Sealing Plugs:
	Standard DT Series connectors. Crimp and Multi-Use tool.	3 x DT04-2P 3 x DT04-3P 2 x DT04-4P 1 x DT04-6P 1 x DT04-08PA 1 x DT04-12PA	3 x DT06-2S 3 x DT06-3S 2 x DT06-4S 1 x DT06-6S 1 x DT06-08SA 1 x DT06-12SA	12 x 114017 Sealing Plug 40 x 0460-215-16141 Solid Pin – Green Band 40 x 0462-209-16141 Solid Socket – Green Band Tools: 1 x DET-RT Removal Tool 1 x DET16 Crimp Tool



Assortment Kits – DT Series ‘CAT-Spec’

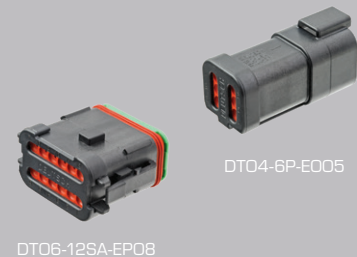
Part No.	Description	Kit Contents		
DTKIT-1-CAT	Solid contacts.	Receptacles & Wedgelocks:	Plugs & Wedgelocks:	Contacts & Sealing Plugs:
	‘CAT-Spec’ DT Series Connectors.	3 x DT04-2P-E005 3 x DT04-3P-E005 2 x DT04-4P-E005 1 x DT04-6P-E005 1 x DT04-08PA-E005 1 x DT04-12PA-E005	3 x DT06-2S-EPO6 3 x DT06-3S-EPO6 2 x DT06-4S-EPO6 1 x DT06-6S-EPO6 1 x DT06-08SA-EPO8 1 x DT06-12SA-EPO8	12 x 114017 Sealing Plug 40 x 0460-215-16141 Solid Pin – Green Band 40 x 0462-209-16141 Solid Socket – Green Band

‘CAT-Spec’

The 3 modified DT Series connector housings with suffix E005, EPO6 & EPO8 are typically referred to as ‘CAT-Spec’, short for CATERPILLAR Specification.

These modified DT Series connector housings are used on most CATERPILLAR mining machinery as an OEM standard connector.

At a glance, they are black, include improved seal retention on the plug (DT06 side, by using the PO12 wedgelock), and a cap on the rear of the housing to retain the connectors rear wire seal.



DT06-12SA-EPO8

DT04-6P-E005





DTBS



DTBS-1

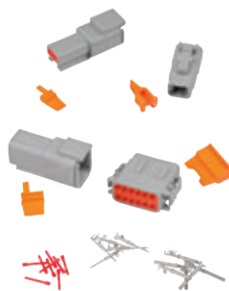


Assortment Kits – Backshells for DT Series

Part No.	Style	Kit Contents	
DTBS	Straight	Backshells Straight – Receptacles: 8 x 1011-257-0205 – Suits DT04-2P 5 x 1011-261-0305 – Suits DT04-3P 4 x 1011-265-0405 – Suits DT04-4P 3 x 1011-269-0605 – Suits DT04-6P 1 x 1011-245-0805 – Suits DT04-8P 1 x 1011-249-1205 – Suits DT04-12P	Backshells Straight – Plugs: 8 x 1011-255-0205 – Suits DT06-2S 5 x 1011-259-0305 – Suits DT06-3S 4 x 1011-263-0405 – Suits DT06-4S 3 x 1011-267-0605 – Suits DT06-6S 1 x 1011-243-0805 – Suits DT06-8S 1 x 1011-247-1205 – Suits DT06-12S
		Backshells 90° – Receptacles: 8 x 1011-258-0205 – Suits DT04-2P 6 x 1011-262-0305 – Suits DT04-3P 3 x 1011-266-0405 – Suits DT04-4P 3 x 1011-270-0605 – Suits DT04-6P 1 x 1011-246-0805 – Suits DT04-8P 1 x 1011-250-1205 – Suits DT04-12P	Backshells 90° – Plugs: 8 x 1011-256-0205 – Suits DT06-2S 6 x 1011-260-0305 – Suits DT06-3S 3 x 1011-264-0405 – Suits DT06-4S 3 x 1011-268-0605 – Suits DT06-6S 1 x 1011-244-0805 – Suits DT06-8S 1 x 1011-248-1205 – Suits DT06-12S



DTMKIT



DTMKIT-1



Assortment Kits – DTM Series

Part No.	Description	Kit Contents		
DTMKIT	F-Crimp contacts. Standard DTM Series connectors.	Receptacles & Wedgelocks: 4 x DTM04-2P 4 x DTM04-3P 4 x DTM04-4P 2 x DTM04-6P 2 x DTM04-08PA 2 x DTM04-12PA	Plugs & Wedgelocks: 4 x DTM06-2S 4 x DTM06-3S 4 x DTM06-4S 2 x DTM06-6S 2 x DTM06-08SA 2 x DTM06-12SA	Contacts & Sealing Plugs: 20 x 0413-204-2005 Sealing Plug 50 x 1060-20-0122L F-Crimp Pin 50 x 1062-20-0122L F-Crimp Socket
		Receptacles & Wedgelocks: 4 x DTM04-2P 4 x DTM04-3P 4 x DTM04-4P 2 x DTM04-6P 2 x DTM04-08PA 2 x DTM04-12PA	Plugs & Wedgelocks: 4 x DTM06-2S 4 x DTM06-3S 4 x DTM06-4S 2 x DTM06-6S 2 x DTM06-08SA 2 x DTM06-12SA	Contacts & Sealing Plugs: 20 x 0413-204-2005 Sealing Plug 50 x 0460-202-20141 Solid Pin 50 x 0462-201-20141 Solid Socket

- Environmentally sealed – IP68, IP6K9K, when installed to manufacturer's specifications.
- Available in 2 and 4 cavity arrangements.
- Rectangular, thermoplastic housing.
- Latched mating.
- Wedgelocks ensure contact alignment and retention.
- Accepts size 12 contacts, each with 25A continuous capacity.
- Available in Kits with Solid, or Solid – Gold plated contact options.
- Each Kit contains all components required to make both sides of a connection.

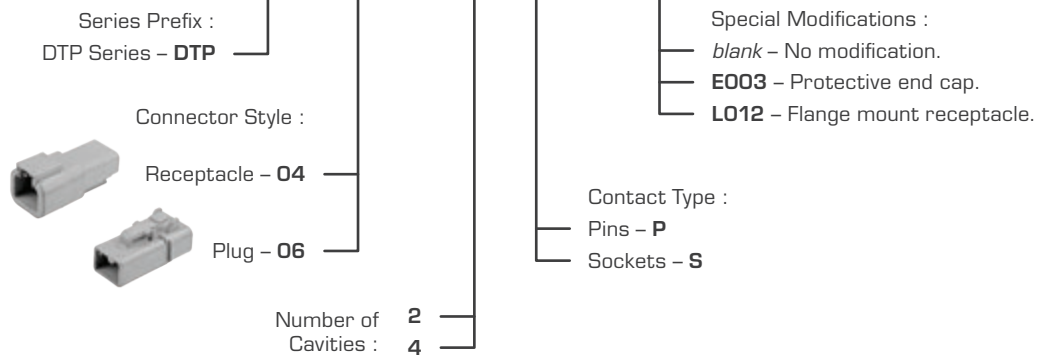


Housing :	Thermoplastic
Seal :	Silicon Rubber
Wedgeloock :	Thermoplastic
Contact Size :	12
Contact Rating :	25A @ 125°C
Shock :	50G
Vibration :	20G rms 10 – 2000Hz
Approvals :	20mm Flame Test per Standard UL-94
Ingress Protection :	IP68, IP6K9K
Operating Temperature :	-55°C to 125°C



Part Numbering System

DTP 04 – 02 P – E003



Special Modifications



DTP04-2P-E003

E003

Protective end cap attached to the rear of the connector.



DTP06-4S-E003

DTP04-4P-L012

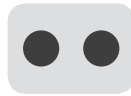


L012

Flange mount receptacle.

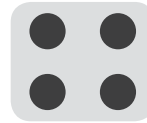


DTP0X-2X



2 x size 12

DTP0X-4X



4 x size 12

DTP Series – Popular Components

Circuits	Housing	Receptacle Components		Housing	Plug Components	
		Wedglock	Size 12 Pin – Nickel		Wedglock	Size 12 Socket – Nickel
2	DTP04-2P	WP-2P	0460-204-12141 AWG12-14 / 2.0-3.0mm ²	DTP06-2S	WP-2S	0462-203-12141 AWG12-14 / 2.0-3.0mm ²
4	DTP04-4P	WP-4P	114017 Sealing Plug	DTP06-4S	WP-4S	114017 Sealing Plug

For complete details on contacts & further options see page 63.



DTP Series – Pack Quantities – Housings NEW

Cavities	Part No.	Receptacles			Cavities	Part No.	Plugs		
		10	50	Bulk Box			10	50	Bulk Box
2	DTP04-2P	●	●	550	2	DTP06-2S	●	●	1200
	DTP04-2P-E003	●	—	—		DTP06-2S-E003	●	—	—
	DTP04-4P	●	●	350		DTP06-4S	●	●	800
4	DTP04-4P-E003	●	—	—	4	DTP06-4S-E003	●	—	—
	DTP04-4P-L012	●	—	—					



DTP4-1



DTP Series – Kits

Contact Type	Size	No. of Cavities		Kit Contents:
		2	4	
Solid	12	DTP2-1	DTP4-1	<ul style="list-style-type: none"> • Receptacle & Wedglock • Plug & Wedglock • Contacts – Pin • Contacts – Socket
Solid – Gold Plated	12	DTP2-4	DTP4-4	



WP-2P



WP-4P



WP-2S



WP-4S

DTP Series – Pack Quantities – Wedgelocks NEW

Cavities	Part No.	Receptacles		Cavities	Part No.	Plugs	
		10	50			10	50
2	WP-2P	•	•	2	WP-2S	•	•
4	WP-4P	•	•	4	WP-4S	•	•



1011-026-0205



1027-003-1200



1027-005-1200



1027-008-1200



DTP4P-LO12-GKT

DTP Series – Accessories

Part No.	Description	Mounting Direction	Colour / Material	Mounting Hole Ø (mm)
1011-026-0205	Mounting Clip	Straight	Grey plastic	5
1027-003-1200	Mounting Clip	Straight	Stainless steel	11
1027-005-1200	Mounting Clip	Straight	Stainless steel	13
1027-008-1200	Mounting Clip	Side	Zinc Plated steel	11
DTP4P-LO12-GKT	Mounting gasket suiting 4 circuit flange mount LO12 receptacle (DTPO4-4P-LO12)			



DTHD04-1-4P



DTHD06-1-8S



DTHD04-1-8P



DTHD06-1-12S



- Cylindrical thermoplastic design.
- Latched mating.
- Accepts contact sizes 4, 8, 12.
- 6–14 AWG.
- 1 cavity arrangement.
- Each Kit contains all components required to make both sides of a connection.

Housing :

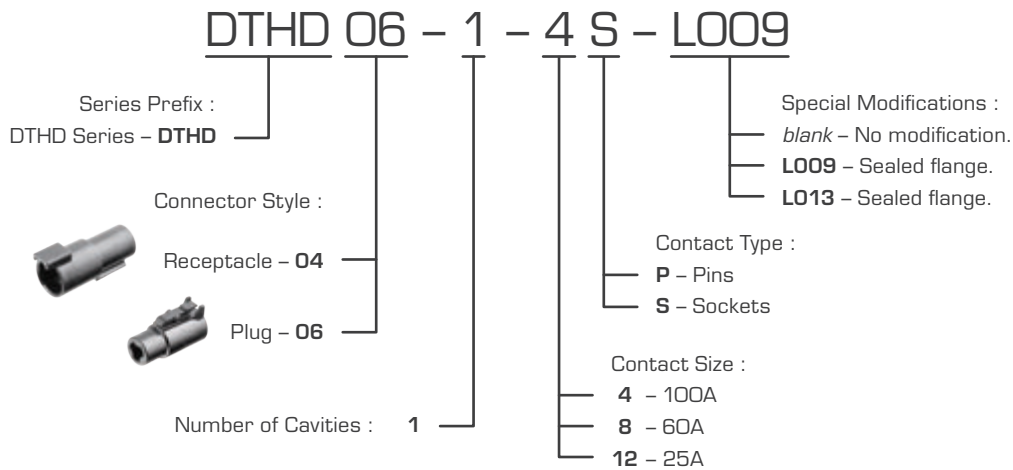
Seal :

Vibration :

Operating Temperature :

Thermoplastic
Silicon Rubber
20G rms 10 – 2000Hz
-55°C to 125°C

Part Numbering System



Special Modifications

DTHD04-1-4P-L009



L009

Sealed flange. Through panel mount.
DTHD04-1-4P only.

DTHD04-1-4P-L013



L013

Sealed flange. Surface mount.
DTHD04-1-4P only.



DTHD04-1-4P

DTHD04-1-8P

DTHD04-1-12P



DTHD06-1-4S



DTHD06-1-8S



DTHD06-1-12S

DTHD Series – Pack Quantities – Housings

Receptacles				Plugs			
Contact Size	Rating (A) @ 125°C	Part No.	10	Contact Size	Rating (A) @ 125°C	Part No.	10
4	100	DTHD04-1-4P	•	4	100	DTHD06-1-4S	•
8	60	DTHD04-1-8P	•	8	60	DTHD06-1-8S	•
12	25	DTHD04-1-12P	•	12	25	DTHD06-1-12S	•

For complete details on contacts & further options see page 63.



DTHD4-1

DTHD Series – Kits

Contact Type	4	8	12	Kit Contents: 1 x Receptacle 1 x Plug 1 x Contact – Pin 1 x Contact – Socket
Solid	DTHD4-1	DTHD8-1	DTHD12-1	



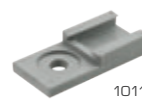
1027-003-1200



1027-005-1200



1011-026-0205



DTHD Series – Mounting Clips

Part No.	Mounting Direction	Colour / Material	Mounting Hole (mm)
1027-003-1200	Straight	Stainless steel	11
1027-005-1200	Straight	Stainless steel	13
1011-026-0205	Straight	Grey plastic	5

