

Popular Products



JUNE 2023

TABLE OF CONTENTS

CABLE

110 Degree Flexible SDI Cable	3
BUS System Cable	7
Control Cable	6
Fire Rated Cable	3
Flexible Building Wire	4
Flexible XLPE Cable	3
High Temperature Cable	8
Instrumentation Cable	8
Mining Cable	8
Orange Circular	6
Rubber Cable	5
Screened Control Cable	7
Screened Power Cable	7

CABLE ACCESSORIES

Flexible IP68 Conduit	14
Conduit Accessories	14
Cable Entry Systems	18
Cable Grommets	18

CONSUMER UNITS

IP65 Plastic Consumer Units	12
-----------------------------	----

CONNECTORS

IP67 Industrial Plugs & Sockets	14
Multipole Connectors	15-16

CONTROL & INTEGRATION

AC Circuit Breaker	13
Power Supplies	18
Terminals	17
Terminal Accessories	17

RENEWABLE ENERGY

DC Solar Cable	9
Genuine MC4 Connectors	10-11
DC Circuit Breakers	12
Fusing	12
Cable Clips	9
Cable Ties	9
Cable Assemblies	10
In-Line Fuse Assembly	9

DKSH AUSTRALIA

DKSH Australia is a leading supplier of industrial services and technologies. For over 40 years we have been serving all types of manufacturers, electrical contractors, system integrators and electrical wholesale clients with premium products from leading brands.

Comprising a national network of local State-based sales, customer service and warehouse operations, DKSH offers exceptional availability and one-stop shop convenience across a comprehensive range of cables, electrical accessories and complete solutions for all applications.

DKSH are your packaged solution provider of quality electrical products and services to the electrical industry.

Our new, fully owned and operated 6,823 square metre national distribution centre in Braeside, southeast of Melbourne is the hub for DKSH Cables & Electrical, offering enhanced customer and client service capabilities through efficient, accurate and on-time product distribution.

The warehouse includes 800 square metres of electrical harnessing facilities manufacturing custom-made assemblies, solar leads and connectors. Our warehouse management system connected to DKSH's global SAP platform provides efficient, accurate and on-time order fulfillment.

Industries served include:

- Automation
- Automotive
- Construction
- Cranes, conveyors and lifts
- Defence
- Electrical contractors
- Food and beverage
- Generator and plant hire
- HVAC
- Mass transit
- Materials handling
- Mining, oil and gas
- OEM's
- Solar
- Stage, theatre and film
- Switchboard builders
- Utilities
- Water and waste water
- Wholesale

FLEXIBLE XLPE CABLE

RALOS

RALOS FLEXIBLE XLPE 90 DEGREE CABLE

0.6/1kV electric cables use for main power and control systems applications



Part No.	Description
XLPE1X16	16mm ² Flexible CU XLPE/PVC 0.6/1kV
XLPE1X25	25mm ² Flexible CU XLPE/PVC 0.6/1kV
XLPE1X35	35mm ² Flexible CU XLPE/PVC 0.6/1kV
XLPE1X50	50mm ² Flexible CU XLPE/PVC 0.6/1kV
XLPE1X70	70mm ² Flexible CU XLPE/PVC 0.6/1kV
XLPE1X95	95mm ² Flexible CU XLPE/PVC 0.6/1kV
XLPE1X120	120mm ² Flexible CU XLPE/PVC 0.6/1kV

Part No.	Description
XLPE1X150	150mm ² Flexible CU XLPE/PVC 0.6/1kV
XLPE1X185	185mm ² Flexible CU XLPE/PVC 0.6/1kV
XLPE1X240	240mm ² Flexible CU XLPE/PVC 0.6/1kV
XLPE1X300	300mm ² Flexible CU XLPE/PVC 0.6/1kV
XLPE1X400	400mm ² Flexible CU XLPE/PVC 0.6/1kV
XLPE1X500	500mm ² Flexible CU XLPE/PVC 0.6/1kV
XLPE1X630	630mm ² Flexible CU XLPE/PVC 0.6/1kV

110 DEGREE FLEXIBLE SDI CABLE

HALOGEN FREE 110 DEGREE FLEXIBLE SDI

Highly flexible single conductor low smoke halogen-free power cable



Part No.	Description
HF1X10SDI	10mm ² HFS 110deg SDI 0.6/1kV Org
HF1X16SDI	16mm ² HFS 110deg SDI 0.6/1kV Org
HF1X25SDI	25mm ² HFS 110deg SDI 0.6/1kV Org
HF1X35SDI	35mm ² HFS 110deg SDI 0.6/1kV Org
HF1X50SDI	50mm ² HFS 110deg SDI 0.6/1kV Org
HF1X70SDI	70mm ² HFS 110deg SDI 0.6/1kV Org
HF1X95SDI	95mm ² HFS 110deg SDI 0.6/1kV Org

Part No.	Description
HF1X120SDI	120mm ² HFS 110deg SDI 0.6/1kV Org
HF1X150SDI	150mm ² HFS 110deg SDI 0.6/1kV Org
HF1X185SDI	185mm ² HFS 110deg SDI 0.6/1kV Org
HF1X240SDI	240mm ² HFS 110deg SDI 0.6/1kV Org
HF1X300SDI	300mm ² HFS 110deg SDI 0.6/1kV Org
HF1X400SDI	400mm ² HFS 110deg SDI 0.6/1kV Org
HF1X500SDI	500mm ² HFS 110deg SDI 0.6/1kV Org
HF1X630SDI	630mm ² HFS 110deg SDI 0.6/1kV Org

FIRE RATED CABLE

FR3013 FLEXIBLE FIRE RATED POWER CABLE

Single Core



Part No.	Description
FR1X16R	16mm S/C Flex Fire Rated Cable Red
FR1X25R	25mm S/C Flex Fire Rated Cable Red
FR1X35R	35mm S/C Flex Fire Rated Cable Red
FR1X50R	50mm S/C Flex Fire Rated Cable Red
FR1X70R	70mm S/C Flex Fire Rated Cable Red
FR1X95R	95mm S/C Flex Fire Rated Cable Red
FR1X120R	120mm S/C Flex Fire Rated Cable Red

FR3013 FLEXIBLE FIRE RATED POWER CABLE

Multicore



Part No.	Description
FR1X150R	150mm S/C Flex Fire Rated Cable Red
FR1X185R	185mm S/C Flex Fire Rated Cable Red
FR1X240R	240mm S/C Flex Fire Rated Cable Red
FR1X300R	300mm S/C Flex Fire Rated Cable Red
FR1X400R	400mm S/C Flex Fire Rated Cable Red

Part No.	Description
FR3G2.5R	2.5mm 2C+E Flex Fire Rated Cable Red
FR5G2.5R	2.5mm 4C+E Flex Fire Rated Cable Red
FR5G4R	4mm 4C+E Flex Fire Rated Cable Red
FR5G6R	6mm 4C+E Flex Fire Rated Cable Red
FR5G10R	10mm 4C+E Flex Fire Rated Cable Red
FR5G16R	16mm 4C+E Flex Fire Rated Cable Red
FR5G25R	25mm 4C+E Flex Fire Rated Cable Red

FLEXIBLE BUILDING WIRE

RALOS

110°C FLEXIBLE HALOGEN-FREE BUILDING WIRE

AS/NZS standard 110°C halogen free, low smoke, high temperature, flame-retardant, UV-resistant flexible cable



Part No.	Description
HF1X0.5BK	0.5mm Flexible Black
HF1X0.5BE	0.5mm Flexible Blue
HF1X0.5BN	0.5mm Flexible Brown
HF1X0.5RD	0.5mm Flexible Red
HF1X0.5WE	0.5mm Flexible White
HF1X0.5GY	0.5mm Flexible Grey
HF1X0.5VT	0.5mm Flexible Violet
HF1X0.5PK	0.5mm Flexible Pink
HF1X0.5OE	0.5mm Flexible Orange
HF1X0.5GN/YW	0.5mm Flexible Green/Yellow

HF1X0.75BK	0.75mm Flexible Black
HF1X0.75BE	0.75mm Flexible Blue
HF1X0.75BN	0.75mm Flexible Brown
HF1X0.75RD	0.75mm Flexible Red
HF1X0.75WE	0.75mm Flexible White
HF1X0.75GY	0.75mm Flexible Grey
HF1X0.75VT	0.75mm Flexible Violet
HF1X0.75PK	0.75mm Flexible Pink
HF1X0.75OE	0.75mm Flexible Orange
HF1X0.75GN/YW	0.75mm Flexible Green/Yellow

HF1X1BK	1mm Flexible Black
HF1X1BE	1mm Flexible Blue
HF1X1BN	1mm Flexible Brown
HF1X1RD	1mm Flexible Red
HF1X1WE	1mm Flexible White
HF1X1GY	1mm Flexible Grey
HF1X1VT	1mm Flexible Violet
HF1X1PK	1mm Flexible Pink
HF1X1OE	1mm Flexible Orange
HF1X1GN/YW	1mm Flexible Green/Yellow

Part No.	Description
HF1X1.5BK	1.5mm Flexible Black
HF1X1.5BE	1.5mm Flexible Blue
HF1X1.5BN	1.5mm Flexible Brown
HF1X1.5RD	1.5mm Flexible Red
HF1X1.5WE	1.5mm Flexible White
HF1X1.5GY	1.5mm Flexible Grey
HF1X1.5VT	1.5mm Flexible Violet
HF1X1.5PK	1.5mm Flexible Pink
HF1X1.5OE	1.5mm Flexible Orange
HF1X1.5GN/YW	1.5mm Flexible Green/Yellow

HF1X2.5BK	2.5mm Flexible Black
HF1X2.5BE	2.5mm Flexible Blue
HF1X2.5BN	2.5mm Flexible Brown
HF1X2.5RD	2.5mm Flexible Red
HF1X2.5WE	2.5mm Flexible White
HF1X2.5GY	2.5mm Flexible Grey
HF1X2.5VT	2.5mm Flexible Violet
HF1X2.5PK	2.5mm Flexible Pink
HF1X2.5OE	2.5mm Flexible Orange
HF1X2.5GN/YW	2.5mm Flexible Green/Yellow

HF1X4BK	4mm Flexible Black
HF1X4BE	4mm Flexible Blue
HF1X4RD	4mm Flexible Red
HF1X4WE	4mm Flexible White
HF1X4GN/YW	4mm Flexible Green/Yellow

Part No.	Description
HF1X6BK	6mm Flexible Black
HF1X6BE	6mm Flexible Blue
HF1X6RD	6mm Flexible Red
HF1X6WE	6mm Flexible White
HF1X6GN/YW	6mm Flexible Green/Yellow

HF1X10BK	10mm Flexible Black
HF1X10BE	10mm Flexible Blue
HF1X10RD	10mm Flexible Red
HF1X10WE	10mm Flexible White
HF1X10GN/YW	10mm Flexible Green/Yellow

HF1X16BK	16mm Flexible Black
HF1X16BE	16mm Flexible Blue
HF1X16RD	16mm Flexible Red
HF1X16WE	16mm Flexible White
HF1X16GN/YW	16mm Flexible Green/Yellow

HF1X25GN/YW	25mm Flexible Green/Yellow
HF1X35GN/YW	35mm Flexible Green/Yellow
HF1X50GN/YW	50mm Flexible Green/Yellow
HF1X70GN/YW	70mm Flexible Green/Yellow
HF1X95GN/YW	95mm Flexible Green/Yellow
HF1X120GN/YW	120mm Flexible Green/Yellow

COLOUR CODING

BK = Black	BE = Blue	BN = Brown	RD = Red	GY = Grey
OE = Orange	PK = Pink	VT = Violet	WE = White	GN/YW = Green/Yellow

RUBBER CABLE

RALOS

H07RN-F MULTICORE RUBBER POWER AND CONTROL CABLE



Part No.	Description
RB2X1	2X1 H07RN-F
RB2X1.5	2X1.5 H07RN-F
RB2X2.5	2X2.5 H07RN-F
RB3G1	3G1 H07RN-F (2C+E 1mm)
RB3G1.5	3G1.5 H07RN-F (2C+E 1.5mm)
RB3G2.5	3G2.5 H07RN-F (2C+E 2.5mm)
RB3G4	3G4 H07RN-F (2C+E 4mm)
RB3G6	3G6 H07RN-F (2C+E 6mm)
RB3G10	3G10 H07RN-F (2C+E 10mm)
RB3G16	3G16 H07RN-F (2C+E 16mm)
RB4G1	4G1 H07RN-F (3C+E 1mm)
RB4G1.5	4G1.5 H07RN-F (3C+E 1.5mm)
RB4G2.5	4G2.5 H07RN-F (3C+E 2.5mm)
RB4G4	4G4 H07RN-F (3C+E 4mm)

Part No.	Description
RB4G6	4G6 H07RN-F (3C+E 6mm)
RB4G10	4G10 H07RN-F (3C+E 10mm)
RB4G16	4G16 H07RN-F (3C+E 16mm)
RB4G25	4G25 H07RN-F (3C+E 25mm)
RB4G35	4G35 H07RN-F (3C+E 35mm)
RB4G50	4G50 H07RN-F (3C+E 50mm)
RB4G70	4G70 H07RN-F (3C+E 70mm)
RB4G95	4G95 H07RN-F (3C+E 95mm)
RB4G120	4G120 H07RN-F (3C+E 120mm)
RB4G185	4G185 H07RN-F (3C+E 185mm)
RB5G1.5	5G1.5 H07RN-F (4C+E 1.5mm)
RB5G2.5	5G2.5 H07RN-F (4C+E 2.5mm)
RB5G4	5G4 H07RN-F (4C+E 4mm)
RB5G6	5G6 H07RN-F (4C+E 6mm)

Part No.	Description
RB5G10	5G10 H07RN-F (4C+E 10mm)
RB5G16	5G16 H07RN-F (4C+E 16mm)
RB5G25	5G25 H07RN-F (4C+E 25mm)
RB5G35	5G35 H07RN-F (4C+E 35mm)
RB5G50	5G50 H07RN-F (4C+E 50mm)
RB5G70	5G70 H07RN-F (4C+E 70mm)
RB5G95	5G95 H07RN-F (4C+E 95mm)
RB5G120	5G120 H07RN-F (4C+E 120mm)
RB7G1.5	7G1.5 H07RN-F (6C+E 1.5mm)
RB7G2.5	7G2.5 H07RN-F (6C+E 2.5mm)
RB12G1.5	12G1.5 H07RN-F (11C+E 1.5mm)
RB12G2.5	12G2.5 H07RN-F (11C+E 2.5mm)
RB18G1.5	18G1.5 H07RN-F (17C+E 1.5mm)

RALOS

H07RN-F SINGLE CORE

Rubber power cable

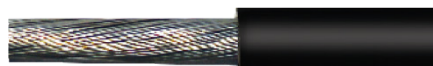


Part No.	Description
RB1X16	1X16 H07RN-F Single Core
RB1X25	1X25 H07RN-F Single Core
RB1X35	1X35 H07RN-F Single Core
RB1X50	1X50 H07RN-F Single Core
RB1X70	1X70 H07RN-F Single Core
RB1X95	1X95 H07RN-F Single Core
RB1X120	1X120 H07RN-F Single Core
RB1X150	1X150 H07RN-F Single Core
RB1X185	1X185 H07RN-F Single Core
RB1X240	1X240 H07RN-F Single Core

RALOS

3.3KV 110° SINGLE CORE SDI

Highly flexible single core, SDI, 3.3kV rubber cable



Part No.	Description
3.3KV1X6	6mm ² NSGAFOU 3.3kV 110°C
3.3KV1X10	10mm ² NSGAFOU 3.3kV 110°C
3.3KV1X16	16mm ² NSGAFOU 3.3kV 110°C
3.3KV1X25	25mm ² NSGAFOU 3.3kV 110°C
3.3KV1X35	35mm ² NSGAFOU 3.3kV 110°C
3.3KV1X50	50mm ² NSGAFOU 3.3kV 110°C
3.3KV1X70	70mm ² NSGAFOU 3.3kV 110°C
3.3KV1X95	95mm ² NSGAFOU 3.3kV 110°C
3.3KV1X120	120mm ² NSGAFOU 3.3kV 110°C
3.3KV1X150	150mm ² NSGAFOU 3.3kV 110°C

RALOS

H07RN-F

Screened rubber cable with pilots



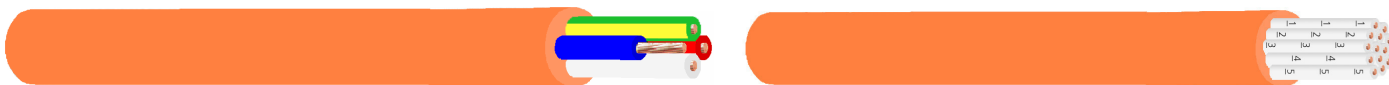
Part No.	Description
RB4G16+4X1.5SCR	16mm 3C+E plus 4x1.5mm Screened Rubber Cable
RB4G25+4X1.5SCR	25mm 3C+E plus 4x1.5mm Screened Rubber Cable
RB4G35+4X2.5SCR	35mm 3C+E plus 4x2.5mm Screened Rubber Cable
RB4G50+4X2.5SCR	50mm 3C+E plus 4x2.5mm Screened Rubber Cable
RB4G70+4X2.5SCR	70mm 3C+E plus 4x2.5mm Screened Rubber Cable

ORANGE CIRCULAR

RALOS

POWER CABLE

Australian standard power distribution cable



Part No. Description

OC3G1.5	1.5mm 2 Core + Earth Orange CIRC 0.6/1Kv
OC3G2.5	2.5mm 2 Core + Earth Orange CIRC 0.6/1Kv
OC3G4	4mm 2 Core + Earth Orange CIRC 0.6/1Kv
OC3G6	6mm 2 Core + Earth Orange CIRC 0.6/1Kv
OC3G10	10mm 2 Core + Earth Orange CIRC 0.6/1Kv
OC3G16	16mm 2 Core + Earth Orange CIRC 0.6/1Kv
OC4G1.5	1.5mm 3 Core + Earth Orange CIRC 0.6/1Kv
OC4G2.5	2.5mm 3 Core + Earth Orange CIRC 0.6/1Kv
OC4G4	4mm 3 Core + Earth Orange CIRC 0.6/1Kv

Part No. Description

OC4G6	6mm 3 Core + Earth Orange CIRC 0.6/1Kv
OC4G10	10mm 3 Core + Earth Orange CIRC 0.6/1Kv
OC4G16	16mm 3 Core + Earth Orange CIRC 0.6/1Kv
OC5G1.5	1.5mm 4 Core + Earth Orange CIRC 0.6/1Kv
OC5G2.5	2.5mm 4 Core + Earth Orange CIRC 0.6/1Kv
OC5G4	4mm 4 Core + Earth Orange CIRC 0.6/1Kv
OC5G6	6mm 4 Core + Earth Orange CIRC 0.6/1Kv
OC5G10	10mm 4 Core + Earth Orange CIRC 0.6/1Kv
OC5G16	16mm 4 Core + Earth Orange CIRC 0.6/1Kv

Part No. Description

OC5G25	25mm 4 Core + Earth Orange CIRC 0.6/1Kv
OC5G35	35mm 4 Core + Earth Orange CIRC 0.6/1Kv
OC7G1.5	1.5mm 6 Core + Earth Orange CIRC 0.6/1Kv
OC11G1.5	1.5mm 10 Core + Earth Orange CIRC 0.6/1Kv
OC16G1.5	1.5mm 15 Core + Earth Orange CIRC 0.6/1Kv
OC21G1.5	1.5mm 20 Core + Earth Orange CIRC 0.6/1Kv
OC7G2.5	2.5mm 6 Core + Earth Orange CIRC 0.6/1Kv
OC11G2.5	2.5mm 10 Core + Earth Orange CIRC 0.6/1Kv
OC16G2.5	2.5mm 15 Core + Earth Orange CIRC 0.6/1Kv

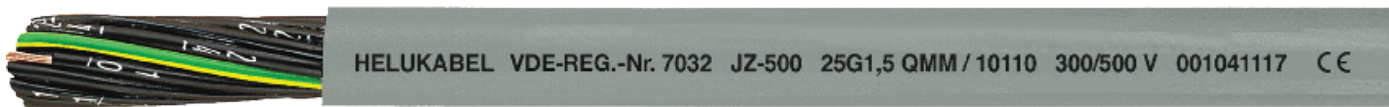
CONTROL CABLE



HELUKABEL®

JZ-500

Industrial standard PVC control cable



Part No. Description

CC5G0.5	0.5mm 4C+E Flexible Control Cable Grey
CC7G0.5	0.5mm 6C+E Flexible Control Cable Grey
CC10G0.5	0.5mm 9C+E Flexible Control Cable Grey
CC12G0.5	0.5mm 11C+E Flexible Control Cable Grey
CC18G0.5	0.5mm 17C+E Flexible Control Cable Grey
CC25G0.5	0.5mm 24C+E Flexible Control Cable Grey
CC3G0.75	0.75mm 2C+E Flexible Control Cable Grey
CC4G0.75	0.75mm 3C+E Flexible Control Cable Grey
CC5G0.75	0.75mm 4C+E Flexible Control Cable Grey
CC7G0.75	0.75mm 6C+E Flexible Control Cable Grey
CC10G0.75	0.75mm 9C+E Flexible Control Cable Grey
CC12G0.75	0.75mm 11C+E Flexible Control Cable Grey
CC18G0.75	0.75mm 17C+E Flexible Control Cable Grey
CC25G0.75	0.75mm 24C+E Flexible Control Cable Grey
CC34G0.75	0.75mm 33C+E Flexible Control Cable Grey
CC50G0.75	0.75mm 49C+E Flexible Control Cable Grey

Part No. Description

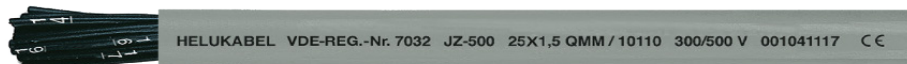
CC3G1	1mm 2C+E Flexible Control Cable Grey
CC4G1	1mm 3C+E Flexible Control Cable Grey
CC5G1	1mm 4C+E Flexible Control Cable Grey
CC7G1	1mm 6C+E Flexible Control Cable Grey
CC9G1	1mm 8C+E Flexible Control Cable Grey
CC12G1	1mm 11C+E Flexible Control Cable Grey
CC18G1	1mm 17C+E Flexible Control Cable Grey
CC20G1	1mm 19C+E Flexible Control Cable Grey
CC25G1	1mm 24C+E Flexible Control Cable Grey
CC36G1	1mm 35C+E Flexible Control Cable Grey
CC41G1	1mm 40C+E Flexible Control Cable Grey
CC50G1	1mm 49C+E Flexible Control Cable Grey
CC3G1.5	1.5mm 2C+E Flexible Control Cable Grey
CC4G1.5	1.5mm 3C+E Flexible Control Cable Grey
CC5G1.5	1.5mm 4C+E Flexible Control Cable Grey
CC7G1.5	1.5mm 6C+E Flexible Control Cable Grey

Part No. Description

CC9G1.5	1.5mm 8C+E Flexible Control Cable Grey
CC12G1.5	1.5mm 11C+E Flexible Control Cable Grey
CC18G1.5	1.5mm 17C+E Flexible Control Cable Grey
CC21G1.5	1.5mm 20C+E Flexible Control Cable Grey
CC25G1.5	1.5mm 24C+E Flexible Control Cable Grey
CC34G1.5	1.5mm 33C+E Flexible Control Cable Grey
CC50G1.5	1.5mm 49C+E Flexible Control Cable Grey
CC3G2.5	2.5mm 2C+E Flexible Control Cable Grey
CC4G2.5	2.5mm 3C+E Flexible Control Cable Grey
CC5G2.5	2.5mm 4C+E Flexible Control Cable Grey
CC7G2.5	2.5mm 6C+E Flexible Control Cable Grey
CC12G2.5	2.5mm 11C+E Flexible Control Cable Grey
CC18G2.5	2.5mm 17C+E Flexible Control Cable Grey
CC25G2.5	2.5mm 24C+E Flexible Control Cable Grey
CC4G4	4mm 3C+E Flexible Control Cable Grey
CC5G6	6mm 4C+E Flexible Control Cable Grey

JZ-500 (NO EARTH)

Industrial standard PVC control cable



Part No. Description

CC2X0.75	0.75mm 2C Flexible Control Cable Grey
CC3X0.75	0.75mm 3C Flexible Control Cable Grey
CC2X1	1mm 2C Flexible Control Cable Grey

Part No. Description

CC2X1.5	1.5mm 2C Flexible Control Cable Grey
CC3X1.5	1.5mm 3C Flexible Control Cable Grey

SCREENED POWER CABLE



Y-CY-JB - VSD EMC COMPLIANT SCREENED POWER CABLE



Part No.	Description
PC3G1.5CY	1.5mm 2C+E EMC Power Cable Screened
PC3G2.5CY	2.5mm 2C+E EMC Power Cable Screened
PC4G1CY	1mm 3C+E EMC Power Cable Screened
PC4G1.5CY	1.5mm 3C+E EMC Power Cable Screened
PC4G2.5CY	2.5mm 3C+E EMC Power Cable Screened
PC4G4CY	4mm 3C+E EMC Power Cable Screened

Part No.	Description
PC4G6CY	6mm 3C+E EMC Power Cable Screened
PC4G10CY	10mm 3C+E EMC Power Cable Screened
PC4G16CY	16mm 3C+E EMC Power Cable Screened
PC4G25CY	25mm 3C+E EMC Power Cable Screened
PC4G35CY	35mm 3C+E EMC Power Cable Screened
PC4G50CY	50mm 3C+E EMC Power Cable Screened

Part No.	Description
PC4G70CY	70mm 3C+E EMC Power Cable Screened
PC4G95CY	95mm 3C+E EMC Power Cable Screened
PC5G4CY	4mm 4C+E EMC Power Cable Screened
PC5G6CY	6mm 4C+E EMC Power Cable Screened

SCREENED CONTROL CABLE

Y-CY-JZ

EMC compliant screened control cable



Part No.	Description
CC12G0.5CY	0.5mm 11C+E Screened Control Cable
CC2X0.75CY	0.75mm 2C Screened Control Cable
CC4G1CY	1mm 3C+E Screened Control Cable
CC12G1CY	1mm 11C+E Screened Control Cable
CC25G1CY	1mm 24C+E Screened Control Cable

Part No.	Description
CC7G1.5CY	1.5mm 6C+E Screened Control Cable
CC18G1.5CY	1.5mm 17C+E Screened Control Cable
CC25G1.5CY	1.5mm 24C+E Screened Control Cable
CC3G2.5CY	2.5mm 2C+E Screened Control Cable
CC7G2.5CY	2.5mm 6C+E Screened Control Cable

BUS SYSTEM CABLE

PROFIBUS

Cables for bus systems, Profibus - DP / FMS/ FIP



Part No.	Description
81448	1X2X0.64mm Profibus L2



Part No.	Description
80267	1X2X0.64mm Profibus L2 Drag Chain Cable

INDUSTRIAL ETHERNET HELUKAT 250S

Industrial ethernet Helukat 250S 4-pairs high flexible CAT. 6 for drag chain



Part No.	Description
803387	4pr Cat.6 Drag Chain PUR HELUKAT 250S

INDUSTRIAL ETHERNET

Industrial standard Cat. 5e for fixed, flexible, highly flexible & drag chain applications



Characteristic Impedance:
100 Ohms @ 1-100 MHz

Part No.	Description
82839	4pr Cat5E Drag Chain PUR HELUKAT 100S

DEVICENET BUS

DeviceNet (highly flexible and drag chain applications)



Part No.	Description
81909	1X2X18AWG+1X2X15AWG Drag Chain Thicknet

Part No.	Description
81909	1X2X18AWG+1X2X15AWG Drag Chain Thicknet

DEVICENET BUS

DeviceNet (fixed applications)



Part No.	Description
800684	DeviceNet Thin (Drop) PVC Grey

HIGH TEMPERATURE CABLE



THERMFLEX® 180 EWKF

Silicone flexible power & control cable for harsh environmental applications



Part No.	Description
75009	3G2.5mm Heat EWKF

SIHF

180°C flexible silicon control cable



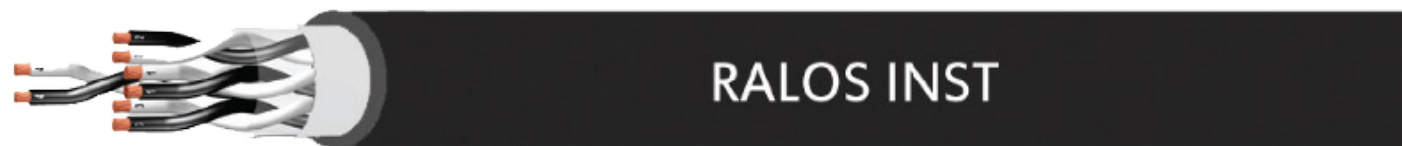
Part No.	Description
23028	3G2.5mm Heat SiHF

INSTRUMENTATION CABLE

RALOS

RALOS INST TO AS/NZS 3808

High temperature PVC V90HT overall screened



Part No.	Description
INS1P0.5CSBK	1pr 0.5mm Overall Screened Instrumentation Cable Black
INS2P0.5CSBK	2pr 0.5mm Overall Screened Instrumentation Cable Black
INS3P0.5CSBK	3pr 0.5mm Overall Screened Instrumentation Cable Black
INS4P0.5CSBK	4pr 0.5mm Overall Screened Instrumentation Cable Black
INS6P0.5CSBK	6pr 0.5mm Overall Screened Instrumentation Cable Black
INS8P0.5CSBK	8pr 0.5mm Overall Screened Instrumentation Cable Black
INS12P0.5CSBK	12pr 0.5mm Overall Screened Instrumentation Cable Black

Part No.	Description
INS1P1CSBK	1pr 1mm Overall Screened Instrumentation Cable Black
INS1P1.5CSBK	1pr 1.5mm Overall Screened Instrumentation Cable Black
INS2P1.5CSBK	2pr 1.5mm Overall Screened Instrumentation Cable Black
INS4P1.5CSBK	4pr 1.5mm Overall Screened Instrumentation Cable Black
INS6P1.5CSBK	6pr 1.5mm Overall Screened Instrumentation Cable Black
INS12P1.5CSBK	12pr 1.5mm Overall Screened Instrumentation Cable Black

RALOS INST TO AS/NZS 3808

High temperature PVC V90HT overall and individually screened



Part No.	Description
INS2P0.5ESCSBK	2pr 0.5mm Individually & Overall Screened Instrum. Cable
INS4P0.5ESCSBK	4pr 0.5mm Individually & Overall Screened Instrum. Cable
INS6P0.5ESCSBK	6pr 0.5mm Individually & Overall Screened Instrum. Cable
INS12P0.5ESCSBK	12pr 0.5mm Individually & Overall Screened Instrum. Cable
INS2P1.5ESCSBK	2pr 1.5mm Individually & Overall Screened Instrum. Cable
INS4P1.5ESCSBK	4pr 1.5mm Individually & Overall Screened Instrum. Cable
INS6P1.5ESCSBK	6pr 1.5mm Individually & Overall Screened Instrum. Cable

RALOS INST TO AS/NZS 3808

High temperature PVC V90HT overall screened



Part No.	Description
INS1TR0.5CSBK	1 Triad 0.5mm Overall Screened Instrumentation Cable

MINING CABLE

TYPE 241.1 REELING AND TRAILING CABLES

Suitable for underground coal mining

Part No.	Description
G-020250	3x6 Type 241.1
G-004834	3x35 Type 241.1
G-023336	3x50 Type 241.1



DC SOLAR CABLE 1500V DC IEC 62930

RALOS

ELECTRON BEAM CROSS-LINKED

PV DC string cable - single core

Part No.	Description
RC1C4-1000	1X4mm SDI Solar IEC 62930 (1000m)
RC1C6-500	1X6mm SDI Solar IEC 62930 (100m)
RC1C6-1000	1X6mm SDI Solar IEC 62930 (1000m)
RC1C10-500	1X10mm SDI Solar IEC 62930 (500m)



RALOS

ELECTRON BEAM CROSS-LINKED

PV DC string cable - single core

Part No.	Description
RC1C16-1000	1x16mm SDI Solar IEC 62930 (1000m)
RC1C25-500	1x25mm SDI Solar IEC 62930 (500m)
RC1C35-500	1x35mm SDI Solar IEC 62930 (500m)

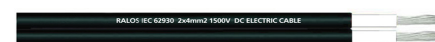


RALOS

ELECTRON BEAM CROSS-LINKED

PV DC string cable - twin core

Part No.	Description
RC2C4-100	2x4mm TWIN Solar IEC 62930 (100m)
RC2C4-500	2x4mm TWIN Solar IEC 62930 (500m)
RC2C6-100	2x6mm TWIN Solar IEC 62930 (100m)
RC2C6-500	2x6mm TWIN Solar IEC 62930 (500m)
RC2C10-100	2x10mm TWIN Solar IEC 62930 (100m)
RC2C10-500	2x10mm TWIN Solar IEC 62930 (500m)



SOLAR ACCESSORIES



CABLE CLIPS

Stainless steel 304, long-lasting, wire management clips



Part No.	Description	Part No.	Description	Part No.	Description	Part No.	Description
ACC	Stainless Steel Cable Clip (PK=100)	ACCPV	Stainless Steel Cable Clip (PK=100)	ACC-R4	ACC-R4 Cable Clip (PK=100)	ACC-F90-1	1 Wire 90 Degree Management Clip (PK=100)

BLACK POLYESTER COATED STAINLESS STEEL CABLE TIES

316 grade stainless steel



Part No.	Length (mm)	Width (mm)	Part No.	Length (mm)	Width (mm)
TS1-4-46200-316C	200	4.6	TS1-4-46200-316C	200	4.6
TS1-4-46360-316C	360	4.6	TS1-4-46360-316C	360	4.6
TS1-4-79200-316C	200	7.9	TS1-4-79200-316C	200	7.9
TS1-4-79360-316C	360	7.9	TS1-4-79360-316C	360	7.9



Part No.	Description
HT-338	Cable Tie Gun

IN-LINE FUSE ASSEMBLY

Multi-Contact



STÄUBLI GROUP

STÄUBLI

PV-K/ILF IN-LINE FUSE ASSEMBLY 1500V DC

Part No.	Description
1500ILF15	IN-LINE FUSE 1500V DC 15A MC4 lead length 55cm
1500ILF20	IN-LINE FUSE 1500V DC 20A MC4 lead length 55cm

More options available on request.



SOLAR CONNECTORS

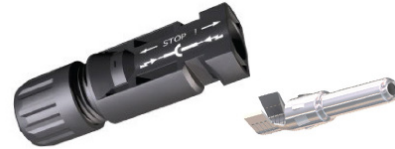
Multi-Contact

MC

STÄUBLI GROUP

STÄUBLI

GENUINE MC4 CONNECTOR SYSTEM



PV-KBT4 Range

Female (socket) Cable Coupler	Conductor size (mm ²)	Cable OD clamping range (mm)	Current rating (A)
32.0010P0001	2.5	5.0 - 6.0	22.5
32.0014P0100	4 - 6	5.0 - 6.0	39
32.0016P0001	4 - 6	5.9 - 8.8	39
32.0034P0001	10	5.9 - 8.8	45

PV-KST4 Range

Male (plug) Cable Coupler	Conductor size (mm ²)	Cable OD clamping range (mm)	Current rating (A)
32.0011P0001	2.5	5.0 - 6.0	22.5
32.0015P0100	4 - 6	5.0 - 6.0	39
32.0017P0001	4 - 6	5.9 - 8.8	39
32.0035P0001	10	5.9 - 8.8	45

MC4 BRANCH PLUGS



PV-AZB4 Branch socket

32.0018	2 x Female - 1 x Male
---------	-----------------------

PV-AZS4 Branch plug

32.0019	2 x Male - 1 x Female
---------	-----------------------

PV-ADBP4 Range Female panel receptacle

32.0076P0001	2.5mm ² conductor
32.0078P0001	4-6mm ² conductor

PV-ADSP4 Range Male panel receptacle

32.0077P0001	2.5mm ² conductor
32.0079P0001	4-6mm ² conductor

32.0107P0001	Socket Pin
--------------	------------

32.0507P0001	Plug pin
--------------	----------

CABLE EXTENSIONS, WHIPS AND JUMPERS

Genuine MC4 Connectors, IEC 62930 DC Solar Cable

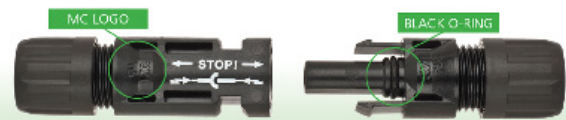


Pre-assembled leads	4mm ² leads	6mm ² leads
2 metre	XPMC4-4/2M	XPMC4-6/2M
5 metre	XPMC4-4/5M	XPMC4-6/5M
8 metre	XPMC4-4/8M	XPMC4-6/8M
10 metre	XPMC4-4/10M	XPMC4-6/10M
12 metre	XPMC4-4/12M	XPMC4-6/12M
15 metre	XPMC4-4/15M	XPMC4-6/15M

Custom lengths also available.

ORIGINAL MC4

MADE IN SWITZERLAND



✓ GENUINE MC ✓ PROVEN QUALITY ✓ FULLY TESTED ✓ RELIABLE

COPY

MADE WHERE?



✗ INFERIOR COPY ✗ INFERIOR QUALITY ✗ CAN BE DISASTROUS ✗ RISK TO WARRANTIES

A growing number of suspect copies of Staübli's MC4 Solar components have recently appeared on the market. Stringent testing* has revealed substantial deficiencies in quality resulting in compromised safety and impaired system performance.

*A temperature increase test by the TÜV Rheinland with copied PV connectors from various manufacturers showed significant differences in higher temperature. This was in stark contrast to the excellent results of the MC4-PV connectors.



SOLAR CONNECTORS



GENUINE MC4-EVO 2 CONNECTOR SYSTEM

IEC 62852 Approved, 1500V DC



PV-KBT4-EVO 2 Range

Female (socket) Cable Coupler	Conductor size (mm ²)	Cable OD clamping range (mm)	Current rating (A)
32.0086P0001	4 - 6	4.7 - 6.4	45 - 53
32.0088P0001	4 - 6	6.4 - 8.4	45 - 53
32.0092P0001	10	6.4 - 8.4	69



PV-KST4-EVO 2 Range

Male (plug) Cable Coupler	Conductor size (mm ²)	Cable OD clamping range (mm)	Current rating (A)
32.0087P0001	4 - 6	4.7 - 6.4	45 - 53
32.0089P0001	4 - 6	6.4 - 8.4	45 - 53
32.0093P0001	10	6.4 - 8.4	69



PV-ADB4-EVO 2

Female (socket) Cable Coupler	Conductor size (mm ²)	Current rating (A)
32.0346P0001	4 - 6	42A 4.0mm ² 47A 6.0mm ²
32.0121P0001	Socket pin	



PV-ADS4-EVO 2

Male (plug) Cable Coupler	Conductor size (mm ²)	Current rating (A)
32.0347P0001	4 - 6	42A 4.0mm ² 47A 6.0mm ²
32.0521.P0001	Plug pin	



PV-AZB-EVO 2

Branch socket	Part No.	Description
	32.0196	2 x Female - 1 x Male



PV-AZS-EVO 2

Branch plug	Part No.	Description
	32.0197	2 x Male - 1 x Female

SAFETY LOCK CLIP MC4



Part No.	Description
32.5280	PV-SSH4 Lock Clip

MC4 SEALING CAPS



Part No.	Description
32.0716	Suits female
32.0717	Suits male

OPEN END SPANNER (PAIR)



Part No.	Description
32.6024	MC4 PV-MS Spanner
32.6058	MC4 EVO 2 PV-MS Spanner
32.6066	MC4 EVO 2 Unlocking Tool

TOOLING



Part No.	Description
32.6027	PV-AZM Stripping Pliers



Part No.	Description
32.6020.19100	2.5, 4, 6mm ² Crimp Tool



Part No.	Description
32.6025	2.5, 4, 6mm ² crimp tool

CONSUMER UNITS

NOARK

IP65 PLASTIC CONSUMER UNITS

Part No.	Description
N4D	4 Pole IP65 Consumer Unit / Enclosure 1 Row
N12D	12 Pole IP65 Consumer Unit / Enclosure 1 Row
N24D	24 Pole IP65 Consumer Unit / Enclosure 2 Rows
103547	Earth Neutral Bar to suit N12D and N24D



FUSING

Gawe SOLARtec

NOARK

GPV SERIES FUSES

1000V DC, 10 x 38mm fuse

DIN RAIL MOUNT FUSE CARRIERS

1000V DC, 10 x 38mm fuse carrier

NH FUSE SWITCH DISCONNECTORS

For use on stand alone systems incorporating battery banks

NOARK FUSE CARRIERS

1000V DC



Includes LED Indicator

Part No.	Description
30F15PV	15A 1000VDC gPV Fuse 10x38mm
30F20PV	20A 1000VDC gPV Fuse 10x38mm

Part No.	Description
212PV	2 Pole PV Fuse Carrier 10x38mm 1000V DC

Part No.	Description
713	Fuse disconnecter 3 pole NH00 160A

Part No.	Description
101766	Ex9FP single pole PV Fuse Holder 1000VDC
101767	Ex9FP Double Pole PV Fuse Holder 1000VDC

DC CIRCUIT BREAKERS

NOARK

360V AND 720V DC CIRCUIT BREAKERS - NON-POLARISED

Part No.	Description	Part No.	Description
84449	Ex9BP 2P DC360V K10 IEC	84454	Ex9BP 2P DC360V K40 IEC
84450	Ex9BP 2P DC360V K16 IEC	84455	Ex9BP 2P DC360V K50 IEC
84451	Ex9BP 2P DC360V K20 IEC	84456	Ex9BP 2P DC360V K63 IEC
84452	Ex9BP 2P DC360V K25 IEC	84476	Ex9BP 4P DC720V K16 IEC
84453	Ex9BP 2P DC360V K32 IEC	84479	Ex9BP 4P DC720V K32 IEC

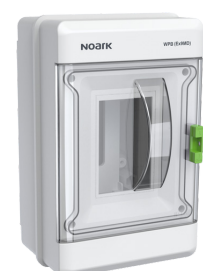
HIGH CURRENT, NON-POLARISED

Part No.	Description
852901	9MD2B TM DC200 2P DC MCCB
852724	9MD2B TM DC400 3P DC MCCB
852899	9MD2B TM DC160 2P DC MCCB
852902	9MD2B TM DC250 2P DC MCCB
852895	9MD1B TM DC100 2P DC MCCB
852896	9MD1B TM DC125 2P DC MCCB



MCCB Enclosure

Part No.	Description
WPB-1	Suitable for 80A - 125A
WPB-2	Suitable for 160A - 250A



AC CIRCUIT BREAKER

NOARK

MCB

MCB Ex9BN - 1P C Curve 6kA

Part No.	Range	Description	Rated Current in A
100100	Ex9B	Ex9BN 1P C25A	25A
100101	Ex9B	Ex9BN 1P C32A	32A
100102	Ex9B	Ex9BN 1P C40A	40A
100103	Ex9B	Ex9BN 1P C50A	50A
100104	Ex9B	Ex9BN 1P C63A	63A

MCB Ex9BN - 2P C Curve 6kA

Part No.	Range	Description	Rated Current in A
100130	Ex9B	Ex9BN 2P C25A	25A
100131	Ex9B	Ex9BN 2P C32A	32A
100132	Ex9B	Ex9BN 2P C40A	40A
100133	Ex9B	Ex9BN 2P C50A	50A
100134	Ex9B	Ex9BN 2P C63A	63A

MCB Ex9BN - 3P C Curve 6kA

Part No.	Range	Description	Rated Current in A
100145	Ex9B	Ex9BN 3P C25A	25A
100146	Ex9B	Ex9BN 3P C32A	32A
100147	Ex9B	Ex9BN 3P C40A	40A
100148	Ex9B	Ex9BN 3P C50A	50A
100149	Ex9B	Ex9BN 3P C63A	63A



RCBO

RCBO 1P C Curve

Part No.	Range	Description	Rated Current in A
90514	Ex9NLE	Ex9NLE EL 1PN C6 30mA A IEC	6A
90515	Ex9NLE	Ex9NLE EL 1PN C10 30mA A IEC	10A
90516	Ex9NLE	Ex9NLE EL 1PN C16 30mA A IEC	16A
90517	Ex9NLE	Ex9NLE EL 1PN C20 30mA A IEC	20A
90518	Ex9NLE	Ex9NLE EL 1PN C25 30mA A IEC	25A
90519	Ex9NLE	Ex9NLE EL 1PN C32 30mA A IEC	32A
90520	Ex9NLE	Ex9NLE EL 1PN C40 30mA A IEC	40A

RCBO 1P + N C Curve

Part No.	Range	Description	Rated Current in A
107643	Ex9BL-N	Ex9BL-N 1P+N C6 A 30mA IEC	6A
107644	Ex9BL-N	Ex9BL-N 1P+N C10 A 30mA IEC	10A
107646	Ex9BL-N	Ex9BL-N 1P+N C16 A 30mA IEC	16A
107647	Ex9BL-N	Ex9BL-N 1P+N C20 A 30mA IEC	20A
107648	Ex9BL-N	Ex9BL-N 1P+N C25 A 30mA IEC	25A
107649	Ex9BL-N	Ex9BL-N 1P+N C32 A 30mA IEC	32A
107650	Ex9BL-N	Ex9BL-N 1P+N C40 A 30mA IEC	40A



MAIN SWITCH / ISOLATORS



Part No.	Range	Description	Rated Current in A
100864	Ex9I	Ex9I125 1P 63A	63A
100865	Ex9I	Ex9I125 1P 80A	80A
100866	Ex9I	Ex9I125 1P 100A	100A
100867	Ex9I	Ex9I125 1P 125A	125A
100876	Ex9I	Ex9I125 3P 63A	63A
100877	Ex9I	Ex9I125 3P 80A	80A
100878	Ex9I	Ex9I125 3P 100A	100A
100879	Ex9I	Ex9I125 3P 125A	125A

BUSBARS

Shortened fork type busbars

- 1 and 3 -phase versions
- 10 mm² for 63A or 16 mm² for 80A rated current
- Step between connection points 18mm
- Fork type connection points
- Delivered without end caps



Part No.	No. of phases	Length MU	Cross section	Description
103799	1	2	10 mm ²	BBUE 1L 10 M2
103800	1	6	10 mm ²	BBUE 1L 10 M6
103801	1	9	10 mm ²	BBUE 1L 10 M9
103802	1	12	10 mm ²	BBUE 1L 10 M12
103805	1	12	16 mm ²	BBUE 1L 16 M12
103803	1	18	10 mm ²	BBUE 1L 10 M18
103806	1	18	16 mm ²	BBUE 1L 16 M18

IP 67 INDUSTRIAL PLUGS & SOCKETS



IEC60309-1, IEC60309-2



Part No.	Description
M2177A	32A 4P 3H 400V IP67 Reeper Container Inline Female Socket



Part No.	Description
M2123A	32A 4P 3H 400V IP67 Reeper Container Panel Mount Socket



Part No.	Description
M2175B	32A 4P 3H 400V IP67 Reeper Container Inline Male Plug



Part No.	Description
M562	32A 5P 6H 400V Inline Female Socket IP67



Part No.	Description
M13212	63A 5P 6H 400V Inline Male Plug IP67
M13225	125A 5P 6H 400V PowerTop Xtra Inline Male Plug IP67



Part No.	Description
M14212	63A 5P 6H 400V Inline Female Socket IP67
M14225	125A 5P 6H 400V PowerTop Xtra Inline Female Socket IP67



Part No.	Description
M5792A	32A 4P 3H 400V IP67 Reeper Container Wall Mount Receptacle



Part No.	Description
M5113A	63A 5P 6H 400V Wall Mount Receptacle IP67

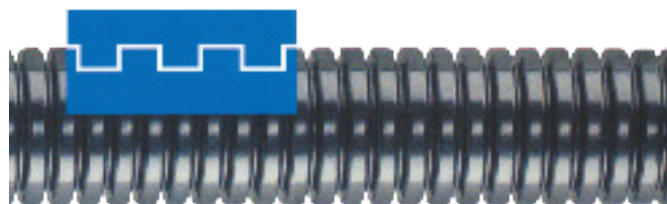
FLEXIBLE IP68 CONDUIT / ACCESSORIES



PA6-VO POLYAMIDE (NYLON) CONDUIT

Industrial standard conduit

Part No.	Description
WY-PA6-V0-AD13.0B	PA Conduit VO ID10XOD13.0 IP68 100m/Roll
WY-PA6-V0-AD15.8B	PA Conduit VO ID12XOD15.8 IP68 100m/Roll
WY-PA6-V0-AD21.2B	PA Conduit VO ID17XOD21.2 IP68 50m/Roll
WY-PA6-V0-AD28.5B	PA Conduit VO ID23XOD28.5 IP68 50m/Roll
WY-PA6-V0-AD34.5B	PA Conduit VO ID29XOD34.5 IP68 25m/Roll
WY-PA6-V0-AD42.5B	PA Conduit VO ID36XOD42.5 IP68 25m/Roll



QUICK SCREW CONNECTOR

Part No.	For conduit size	Outer Ø (mm)	Thread Dimension	Thread length (mm)	Pack Qty
WQG-M12B/AD13.0	AD13.0	13.0	M12×1.5	11.5	50
WQG-M16B/AD15.8	AD15.8	15.8	M16×1.5	12.0	50
WQG-M20B/AD21.2	AD21.2	21.2	M20×1.5	13	50
WQG-M25B/AD28.5	AD28.5	28.5	M25×1.5	13	25
WQG-M32B/AD34.5	AD34.5	34.5	M32×1.5	15	25
WQG-M40B/AD42.5	AD42.5	42.5	M40×1.5	15	10



MULTIPOLE CONNECTORS



REVOS BASIC METRIC GLANDS

Double lock levers, IP54 (IP65 with appropriate IP68 cable glands)



	Socket Insert	Plug Insert	Narrow Entry Hood		Top Entry Hood		Narrow Entry Hood with Locking Levers		Top Entry Hood with Locking Levers	
Description	Part No.	Part No.	Part No.	Gland	Part No.	Gland	Part No.	Gland	Part No.	Gland
10 Pole + earth	70.300.1040.0	70.310.1040.0	70.350.1035.0	M20	70.352.1035.0	M20	70.355.1035.0	M20	70.357.1035.0	M20
10 Pole + earth	70.300.1040.0	70.310.1040.0	-	-	70.354.1035.0	M25	-	-	-	-
16 Pole + earth	70.300.1640.0	70.310.1640.0	70.350.1635.0	M25	70.352.1635.0	M25	70.355.1635.0	M25	70.357.1635.0	M25
24 Pole + earth	70.300.2440.0	70.310.2440.0	70.350.2435.0	M25	70.354.2435.0	M25	70.355.2435.0	M25	70.357.2435.0	M25
24 Pole + earth	70.300.2440.0	70.310.2440.0	70.350.2435.0	M25	70.354.2435.0	M32	70.355.2435.0	M25	70.357.2435.0	M25
32 Pole + earth	70.300.3253.0	70.310.3253.0	70.350.3235.0	M32	70.352.3235.0	M32	-	-	-	-



	Socket Insert	Plug Insert	Open Entry Base		Double Entry Base		Open Entry Base with Protective Cover		Double Entry Base with Protective Cover	
Description	Part No.	Part No.	Part No.	Gland	Part No.	Gland	Part No.	Gland	Part No.	Gland
10 Pole + earth	70.300.1040.0	70.310.1040.0	70.320.1028.0	-	70.330.1035.0	M20	70.325.1028.0	-	70.340.1035.0	M20
16 Pole + earth	70.300.1640.0	70.310.1640.0	70.320.1628.0	-	70.330.1635.0	M25	70.325.1628.0	-	70.340.1635.0	M25
24 Pole + earth	70.300.2440.0	70.310.2440.0	70.320.2428.0	-	70.330.2435.0	M25	70.325.2428.0	-	70.340.2435.0	M25
32 Pole + earth	70.300.3253.0	70.310.3253.0	*70.320.3228.0	-	-	-	-	-	-	-

SINGLE LOCK LEVERS, IP54 (IP65 WITH APPROPRIATE IP68 CABLE GLANDS)



	Socket Insert	Plug Insert	Narrow Entry Hood		Top Entry Hood		Single Entry Base		Single Entry Base with Protective Cover	
Description	Part No.	Part No.	Part No.	Gland	Part No.	Gland	Part No.	Gland	Part No.	Gland
6 Pole + earth	70.300.0640.0	70.310.0640.0	70.350.0635.0	M20	70.352.0635.0	M20	-	-	-	-
48 Pole + earth	70.300.4840.0	70.310.4840.0	70.350.4835.0	M32	70.352.4835.0	M32	70.331.4835.0	M32	70.344.4835.1	M40



	Socket Insert	Plug Insert	Open Entry Base		Double Entry Base		Open Entry Base with Protective Cover		Double Entry Base with Protective Cover	
Description	Part No.	Part No.	Part No.	Gland	Part No.	Gland	Part No.	Gland	Part No.	Gland
6 Pole + earth	70.300.0640.0	70.310.0640.0	70.320.0628.0	-	70.330.0635.0	M20	70.325.0628.0	-	70.340.0635.0	M20
48 Pole + earth	70.300.4840.0	70.310.4840.0	*70.320.4828.0	-	-	-	*70.325.4828.0	-	-	-

* These items have metal levers.

MULTIPOLE CONNECTORS



REVOS MINI

Screw connect 600V, 10A



Socket insert screw clamp

Plug insert screw clamp

Basic single lever

Basic double lever

Size	Part No.	Part No.	Part No.	Gland	Part No.	Gland
3 Pole + earth	73.300.0353.0	73.310.0353.0	76.350.0736.0	M20	76.352.0736.0	M20
4 Pole + earth	73.300.0453.0	73.310.0453.0	76.350.0736.0	M20	76.352.0736.0	M20



Closed bottom base

Open entry base

Open entry angled base

Coupling hood

Size	Part No.	Gland	Part No.	Part No.	Part No.	Gland
3 Pole + earth	76.322.0736.0	M20	76.320.0729.0	76.321.0729.0	76.372.0736.0	M20
4 Pole + earth	76.322.0736.0	M20	76.320.0729.0	76.321.0729.0	76.372.0736.0	M20

GESIS® RST® 2013

3 Pole, 20A, IP66/68 (3m;2h)/IP69 rated connector system



INLINE SOCKET (FEMALE)
6-10 mm clamping range

PANEL SOCKET (FEMALE)
M25 thread

INLINE PLUG (MALE)
6-10 mm clamping range

PANEL PLUG (MALE)
M25 thread

Part No.	Connection type	Part No.	Connection type	Part No.	Connection type	Part No.	Connection type
96.031.4053.1	Screw clamp	96.031.5053.1	Screw clamp	96.032.4053.1	Screw clamp	96.032.5053.1	Screw clamp

GESIS® RST 2015

5 Pole, 20A, IP66/68 (3m;2h)/IP69 rated connector system



Part No.	Description	Part No.	Description	Part No.	Description	Part No.	Description
96.052.4153.1	RST2015 Inline Male Screw connect 10-14mm	96.051.4153.1	RST2015 Inline Female Screw connect 10-14mm	96.052.4553.1	RST2015 Inline Male Screw connect 14-18mm	96.051.4553.1	RST2015 Inline Female Screw connect 14-18mm

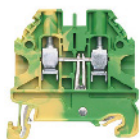
TERMINALS



wieland

SELOS WT

Earth terminals with screw connection

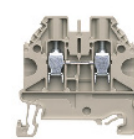
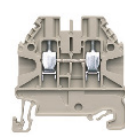


Part No.	Description
58.504.9055.0	4mm Earth Terminal
07.313.2555.0	2.5-10 End Plate AP
07.313.2655.0	2.5-10 End Plate TW

Part No.	Description
58.506.9055.0	6mm Earth Terminal
07.313.2555.0	2.5-10 End Plate AP
07.313.2655.0	2.5-10 End Plate TW

SELOS WT

Terminals with screw connection

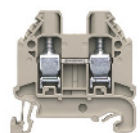


Part No.	Description
58.503.0055.0	2.5mm Grey Terminal
07.313.2555.0	2.5-10 End Plate AP
07.313.2655.0	2.5-10 End Plate TW

Part No.	Description
58.504.0055.0	4mm Grey Terminal
07.313.2555.0	2.5-10 End Plate AP
07.313.2655.0	2.5-10 End Plate TW

SELOS WT

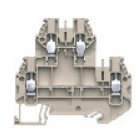
Terminals with screw connection



Part No.	Description
58.506.0055.0	6mm Grey Terminal
07.313.2555.0	2.5-10 End Plate AP
07.313.2655.0	2.5-10 End Plate TW

SELOS WK/WKN/WT

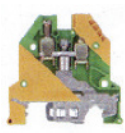
Multi-tier terminals with screw connection



Part No.	Description
58.504.7055.0	4 E D/Deck
07.313.3355.0	4 E D/Deck End Plate

SELOS WKN

Terminals with screw connection



Part No.	Description
57.504.9055.0	WK4SL Earth Terminal V0

SELOS WKN

Terminals with screw connection



Part No.	Description
57.904.5355.0	WK4/THSI5U Terminal 5X20 V0

TERMINAL ACCESSORIES

DIN RAIL

Din rail & end brackets



Part No.	Description
Z5.523.9353.0	WEF 1 / 35 End Bracket Nylon



Part No.	Description
Z5.522.7453.0	9708/S35 End Bracket Plastic Foot



Part No.	Description
Z5.522.8553.0	9708/2S35 End Bracket TS35 Metal Foot

WT2.5MM TERMINAL JUMPER BARS

Part No.	Description
Z7.280.6227.0	Insulated Jumper 2 pole
Z7.280.6327.0	Insulated Jumper 3 pole
Z7.280.6527.0	Insulated Jumper 5 pole
Z7.280.7027.0	Insulated Jumper 10 pole

WT4.0MM TERMINAL JUMPER BARS

Part No.	Description
Z7.261.1227.0	Insulated Jumper 2 pole
Z7.261.1327.0	Insulated Jumper 3 pole
Z7.261.1527.0	Insulated Jumper 5 pole
Z7.261.2027.0	Insulated Jumper 10 pole



POWER SUPPLIES



wieland

SWITCHED-MODE POWER SUPPLY

Wipos PS1 switched-mode power supply

Part No.	Description
81.000.6510.0	Power Supply PS1-24V-1.25A Din Mount
81.000.6520.0	Power Supply PS1-24V-2.5A Din Mount
81.000.6530.0	Power Supply PS1-24V-5A Din Mount
81.000.6540.0	Power Supply PS1-24V-10A Din Mount
81.000.6550.0	Power Supply PS1-24V-20A Din Mount



CABLE ENTRY SYSTEMS

For entering pre-terminated cables

CABLE ENTRY FRAMES

For cables with connectors



KEL-ER

Part No.	Description
K48244	KEL-ER 24 4
K48247	KEL-ER 24 7
K48241	KEL-ER 24 10

CABLE ENTRY PLATES

For cables without connectors



KEL-DPZ

Part No.	Description
K50705	KEL-DPZ 24 17 Bk
K43703	KEL-DPZ 24 17 Gy
K50725	KEL-DPZ 24 16 Bk
K43725	KEL-DPZ 24 16 Gy

CABLE GLANDS

For cables with connectors



KVT

Part No.	Description
K45024	KVT 20 Bk
K45025	KVT 25 Bk
K45026	KVT 32 Bk
K45115	KVT 63 4 Bk

icotek®

SPLIT CABLE GLANDS

For cables with connectors



KVT-EV

Part No.	Description
K45450	KVT-ER 25 Bk
K45452	KVT-ER 32 Bk
K45454	KVT-ER 50/2
K45456	KVT-ER 63/4

* To see the full product range, please ask our friendly sales team for more information.

CABLE GROMMETS

For cable entry systems

KT CABLE GROMMETS



Part No.	Description
K41251	KT Blank
K41202	KT 2 Grey
K41204	KT 4 Grey
K41206	KT 6 Grey
K41208	KT 8 Grey
K41210	KT 10 Grey
K41212	KT 12 Grey
K41214	KT 14 Grey

QT CABLE GROMMETS



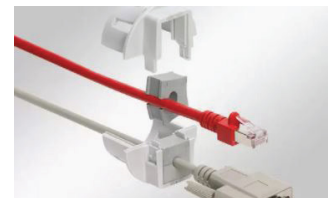
Part No.	Description
K42502	QT 2 Grey
K42504	QT 4 Grey
K42506	QT 6 Grey
K42508	QT 8 Grey
K42510	QT 10 Grey
K42512	QT 12 Grey
K42514	QT 14 Grey

KT MULTI-HOLED GROMMETS



Part No.	Description
K39935	KT 2 5 Grey
K39906	KT 2 4 Grey
K41201	KT 2 6 Grey
K39917	KT 2 8 Grey
K39937	KT 4 2 Grey
K39909	KT 4 4 Grey
K39912	KT 4 6 Grey

KT MULTI-HOLED GROMMETS



Part No.	Description
K99459	EMC KT 2 Black
K99461	EMC KT 4 Black
K99463	EMC KT 6 Black
K99465	EMC KT 8 Black
K99467	EMC KT 10 Black
K99469	EMC KT 12 Black
K99471	EMC KT 14 Black

* Also available in black.

OUR PARTNERS



PVC Control Cables
 Polyurethane Control Cables
 Servo Cables
 Highly Flexible Drag Chain Cables
 EMC & Servo Cables
 Silicone Cables
 Instrumentation Cables
 Data Cables
 Bus Cables
 DeviceNet
 Ethernet Cable
 AS Interface Cable
 Profibus Cables
 Flat Cables



DC Solar Cable
 110 Degree Flexible SDI Cable
 BUS System Cable
 Control Cable
 Fire Rated Cable
 Flexible Building Wire
 Flexible XLPE Cable
 High Temperature Cable
 Instrumentation Cable
 Mining Cable
 Orange Circular
 Rubber Cable
 Screened Control Cable
 Screened Power Cable



Miniature Circuit Breakers - AC & DC
 RCBO
 Moulded Case Circuit Breakers
 Air Circuit Breakers
 Contactors
 Enclosures



CEE Form Connectors
 Powertops
 High Current Connectors



Din Rail
 Din Rail Mounted Terminals
 Terminal/Connector Strips
 Electronic Modules
 Multi-pole Connectors
 Relays
 Building Installation
 Cabling Technology
 Modular Connectors
 PCB Terminals
 Terminal Strips
 Fieldbus Components
 Switchboard Accessories
 Lighting Connectors



Mining Cable



Cable Clips



Nylon Conduits
 Liquid Tight Conduits
 Metal Conduits
 Conduit Accessories



Metal Enclosures
 Terminal Box



MC4 Connectors and Leads
 High Current Plugs & Sockets (up to 6000 Amp)
 Laboratory Test leads
 Banana Plugs & Sockets
 Quick Bus Bar Connectors
 Medical Connectors
 Earthing Connectors
 Robotic Docking Connectors
 Robotic Welding Connectors
 Electric Vehicle Connectors
 Fine Strand Cable
 Highly Flexible Cables
 HF Test Probes
 CombiTac modular connection system
 Multilams
 PCB Mini Connectors



Cable Entry Systems
 EMC Solutions
 Tooling



Isolators
 Fuses
 Cam Switches



Cable Assemblies
 Harnessing Solution

Contact Us

NEW SALES ENQUIRIES

Phone: 1800 010 113
Email: sales.quotes@dksh.com
Web: <https://direct.dksh.com.au/electrical>

EXISTING SALES ENQUIRIES

Phone: 1800 010 113
Email: customercare_au@dksh.com
Web: <https://direct.dksh.com.au/electrical>

Victoria

1 Beyer Road
Braeside VIC 3195
Phone 1800 010 113

NSW South Wales

7B Sepia Road
Kemps Creek NSW 2178
Phone 1800 010 113

Western Australia

9-11 Coulson Way
Canning Vale WA 6155
Phone 1800 010 113

South Australia

Phone 1800 010 113

Queensland

Phone 1800 010 113

Tasmania

Phone 1800 010 113