

## HOW TO ORDER ALUMINIUM CABLE LADDER



Example

# N1 L 900 A

### Select Ladder Size

- N1** Nema 1
- N2** Nema 2
- N3** Nema 3
- N20C** Nema 20C

### Specify Ladder

- L** Ladder

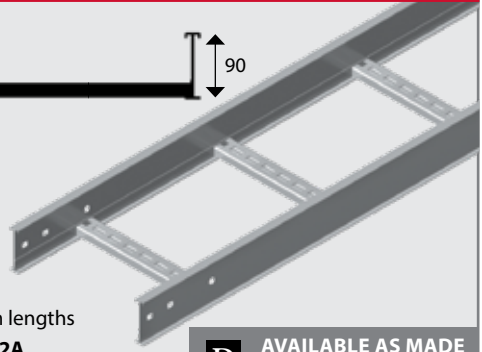
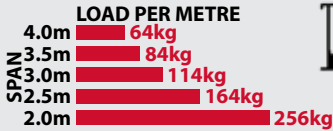
### Select Width (mm)

- 150**
- 300**
- 450**
- 600**
- 900**

### Apply Finish

- A** Aluminium

## N1 NEMA 1 CABLE LADDER

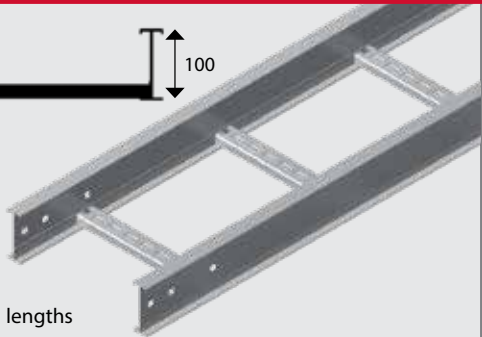
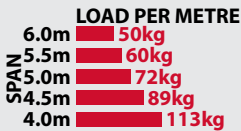


Width (mm)	Weight (kg)	Aluminium
150	9.9/6m	<b>N1L150A</b> <b>D</b>
300	11/6m	<b>N1L300A</b> <b>D</b>
450	12/6m	<b>N1L450A</b> <b>D</b>
600	13.1/6m	<b>N1L600A</b> <b>D</b>
900	15.2/6m	<b>N1L900A</b> <b>D</b>

Supplied in 6m lengths  
Meets **Nema 12A** loading requirements

**D** AVAILABLE AS MADE TO ORDER (MTO).

## N2 NEMA 2 CABLE LADDER

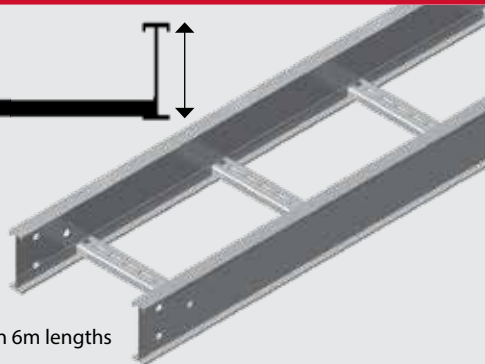


Width (mm)	Weight (kg)	Aluminium
150	12.2/6m	<b>N2L150A</b> <b>C</b>
300	13.2/6m	<b>N2L300A</b> <b>C</b>
450	14.3/6m	<b>N2L450A</b> <b>C</b>
600	15.3/6m	<b>N2L600A</b> <b>C</b>
900	17.4/6m	<b>N2L900A</b> <b>D</b>

Supplied in 6m lengths  
Meets **Nema 16A** loading requirements

## N3 NEMA 3 CABLE LADDER

LOAD PER METRE	
6.0m	74kg
5.5m	88kg
5.0m	106kg
4.5m	131kg
4.0m	167kg



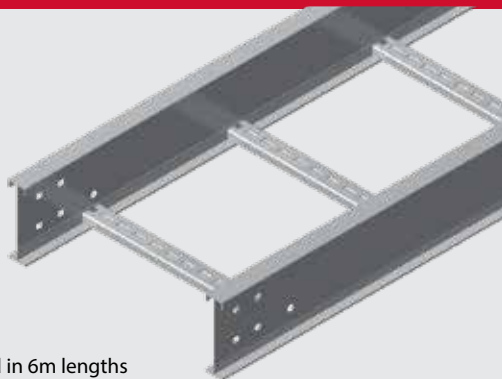
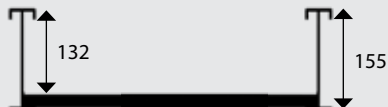
Width (mm)	Weight (kg)	Aluminium
150	11.8/6m	N3L150A <span style="color: red;">C</span>
300	12.6/6m	N3L300A <span style="color: red;">C</span>
450	13.4/6m	N3L450A <span style="color: red;">C</span>
600	14.2/6m	N3L600A <span style="color: red;">C</span>
900	15.9/6m	N3L900A <span style="color: red;">D</span>

Supplied in 6m lengths

Meets **Nema 20A** loading requirements

## N20C NEMA 20C CABLE LADDER

LOAD PER METRE	
6.0m	150kg
5.5m	178kg
5.0m	215kg
4.5m	266kg
4.0m	336kg



Width (mm)	Weight (kg)	Aluminium
150	24.2/6m	N20CL150A <span style="color: red;">C</span>
300	25.3/6m	N20CL300A <span style="color: red;">C</span>
450	26.3/6m	N20CL450A <span style="color: red;">C</span>
600	27.4/6m	N20CL600A <span style="color: red;">C</span>
900	29.5/6m	N20CL900A <span style="color: red;">C</span>

Supplied in 6m lengths

Meets **Nema 20C** loading requirements

### D ALSO AVAILABLE AS C-RAIL SYSTEM OR PARALLEL RAILS

C-Rail System



Parallel Rails



FASTENERS

STRUT SYSTEMS

CABLE SUPPORTS

FIRERATED

PIPE SUPPORTS

## HOW TO ORDER ALUMINIUM CABLE LADDER FITTINGS — Bends, Internal/External Risers, Tees & Crosses

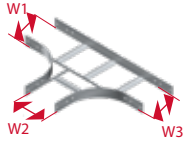
Example

# N3 C 300 3 A



Select Ladder Size	Specify Fitting	Select Width (mm)	Select Radius (mm)	Apply Finish
<b>N1</b> Nema 1	<b>B</b> Bend	<b>150</b>	<b>3</b> 300	<b>A</b> Aluminium
<b>N2</b> Nema 2	<b>ER</b> Ext. Riser	<b>300</b>	<b>4</b> 450	
<b>N3</b> Nema 3	<b>IR</b> Int. Riser	<b>450</b>	<b>6</b> 600	
<b>N20C</b> Nema 20C	<b>T</b> Tee	<b>600</b>		
	<b>C</b> Cross	<b>900</b>		

**D**  
**CUSTOM  
TEE  
ORDERING**

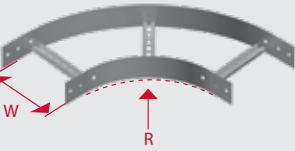


For different width entries, when ordering specify width in order of W1, W2, W3.

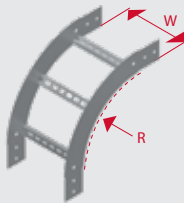
Example:  
**N2T6003006004A**  
W1 = 600  
W2 = 300  
W3 = 600

## BENDS, RISERS, TEES & CROSSES FOR ALUMINIUM

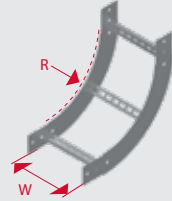
**B BEND**



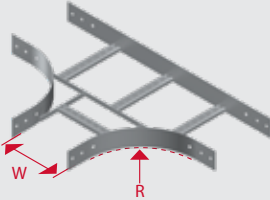
**ER EXTERNAL RISER**



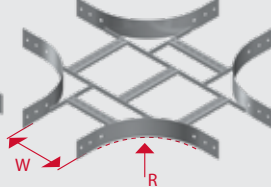
**IR INTERNAL RISER**



**T TEE**



**C CROSS**



**D** AVAILABLE AS MADE TO ORDER (MTO).

Nema 2 Fittings shown for illustration purposes.

### SERVICE GUIDE

for Aluminium Nema 1, 2, 3 and 20C Cable Ladder Fittings are

**D**

Check with your local representative at time of enquiry.

**D** CUSTOM FITTINGS ARE AVAILABLE AS MADE TO ORDER (MTO).

**Service Guide Key:** **A** Usually in stock at all branches

**C** Normal lead time

**B** Usually in stock at head office

**D** Made to Order (lead time on enquiry)

## HOW TO ORDER ALUMINIUM CABLE LADDER FITTINGS -Straight & Left Hand/Right Hand Reducers

Example

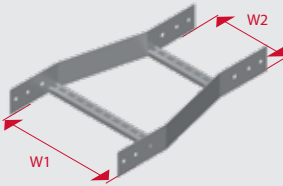
# N3 LHR 900 300 A



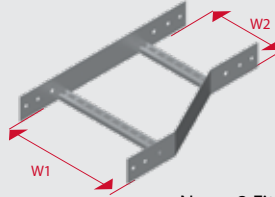
Select Ladder Size	Specify Fitting	Select Width 1 (mm)	Select Width 2 (mm)	Apply Finish
N1	Nema 1 SR St. Reducer	150	150	A Aluminium
N2	Nema 2 LHR Lh. Reducer	300	300	
N3	Nema 3 RHR Rh. Reducer	450	450	
N20C	Nema 20C	600	600	
		900		

### REDUCERS FOR ALUMINIUM CABLE LADDER

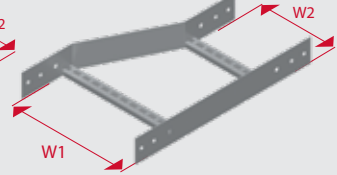
SR STRAIGHT REDUCER



LHR LEFT HAND REDUCER



RHR RIGHT HAND REDUCER



Nema 2 Fittings shown for illustration purposes.

### SERVICE GUIDE

for Aluminium Nema 1, 2, 3 and 20C Cable Ladder Fittings are

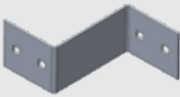
**D**

Check with your local representative at time of enquiry.

**D CUSTOM FITTINGS ARE AVAILABLE AS MADE TO ORDER (MTO).**

### ECONOMY REDUCER FOR ALUMINIUM CABLE LADDER

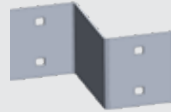
NEMA 1



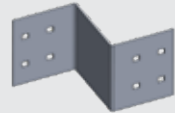
NEMA 2



NEMA 3



NEMA 20C



Width (mm)	Nema1	Nema 2	Nema 3	Nema 20C
150	N1ECR150A	N2ECR150A	N3ECR150A	N20CECR150A
300	N1ECR300A	N2ECR300A	N3ECR300A	N20CECR300A
450	N1ECR450A	N2ECR450A	N3ECR450A	N20CECR450A
600	N1ECR600A	N2ECR600A	N3ECR600A	N20CECR600A

FASTENERS

STRUT SYSTEMS

CABLE SUPPORTS

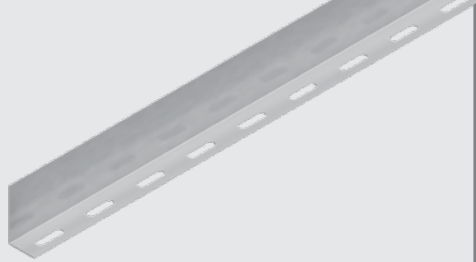
FIRERATED

PIPE SUPPORTS

## DS DIVIDER STRIPS

2 x **HS620** Hex Screws and **E3016** Channel Nuts required for installation.

3m Standard Length

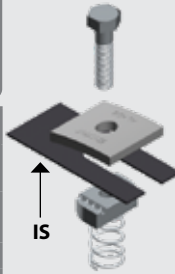


Nema	Aluminium	
	Part No.	Service Guide
N1	<b>N1DSA</b>	<b>B</b>
N2	<b>N2DSA</b>	<b>B</b>
N3	<b>N3DSA</b>	<b>B</b>
N20C	<b>N20CDSA</b>	<b>C</b>

## NHDB HOLD DOWN BRACKET

Supplied complete with hold down plate, spring nut and screw.

Bolt diameter: **M10**



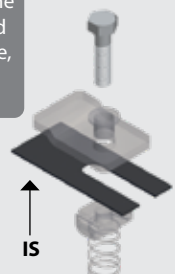
Nema	Aluminium	
	Part No.	Service Guide
N1	<b>NHDBA</b>	<b>D</b>
N2		
N3		
N20C		

\***Interface Spacers (IS)** are supplied separately and should be used when the aluminium is in contact with dissimilar metals.

## HDGA HOLD DOWN GUIDE

Allows thermal expansion of the cable support system. Supplied complete with hold down plate, spring nut and screw.

Bolt diameter: **M10**



Nema	Aluminium	
	Part No.	Service Guide
N1	<b>HDGA</b>	<b>D</b>
N2		
N3		
N20C		

\***Interface Spacers (IS)** are supplied separately and should be used when the aluminium is in contact with dissimilar metals.

## EARTH STRAPS



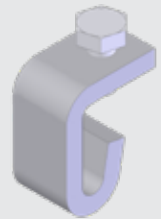
**35mm<sup>2</sup>, 50mm<sup>2</sup> or 70mm<sup>2</sup> Type**

Type (mm <sup>2</sup> )	Size (mm)	Part No.	Service Guide
35	350	<b>ES35-350</b>	<b>B</b>
	400	<b>ES35-400</b>	<b>D</b>
	450	<b>ES35-450</b>	<b>C</b>
	500	<b>ES35-500</b>	<b>C</b>
50	450	<b>ES50-450</b>	<b>D</b>
70	450	<b>ES70-450</b>	<b>B</b>
	600	<b>ES70-600</b>	<b>C</b>

**C** STAINLESS STEEL LUG AVAILABLE

## RLCC RETURN LIP COVER CLAMP

Suitable for N2/ N3/ N20C



Nema	Aluminium	
	Part No.	Service Guide
N2	<b>RLCCA</b>	<b>B</b>
N3		
N20C		

**Service Guide Key:** **A** Usually in stock at all branches

**C** Normal lead time

**B** Usually in stock at head office

**D** Made to Order (lead time on enquiry)

## S SPLICE



**NEMA 1**

4 x **SB** Splice Bolts and **CN** Splice Nuts required per Splice Plate.



**NEMA 2**

4 x **SB** Splice Bolts and **CN** Splice Nuts required per Splice Plate.



**NEMA 3**

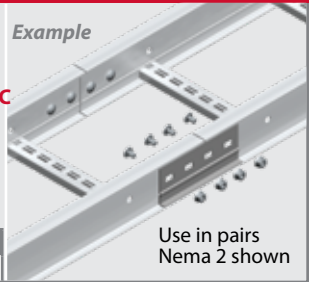
4 x **SB** Splice Bolts and **CN** Splice Nuts required per Splice Plate.



**NEMA 20C**

8 x **SB** Splice Bolts and **CN** Splice Nuts required per Splice Plate.

*Example*



Use in pairs  
Nema 2 shown

Nema 1

**N1SA**

**B**

Nema 2

**N2SA**

**B**

Nema 3

**N3SA**

**C**

Nema 20C

**N20CSA**

**C**

## VS VERTICAL SPLICE



**NEMA 1**

4 x **SB** Splice Bolts and **CN** Splice Nuts required per Splice Plate.



**NEMA 2**

4 x **SB** Splice Bolts and **CN** Splice Nuts required per Splice Plate.



**NEMA 3**

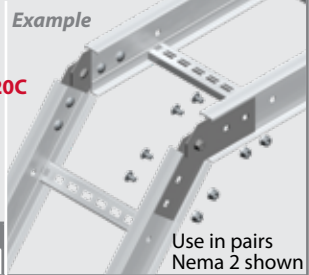
4 x **SB** Splice Bolts and **CN** Splice Nuts required per Splice Plate.



**NEMA 20C**

8 x **SB** Splice Bolts and **CN** Splice Nuts required per Splice Plate.

*Example*



Use in pairs  
Nema 2 shown

Nema 1

**N1VSA**

**B**

Nema 2

**N2VSA**

**B**

Nema 3

**N3VSA**

**C**

Nema 20C

**N20CVSA**

**C**

## HS HORIZONTAL SPLICE



**NEMA 1**

4 x **SB** Splice Bolts and **CN** Splice Nuts required per Splice Plate.



**NEMA 2**

4 x **SB** Splice Bolts and **CN** Splice Nuts required per Splice Plate.



**NEMA 3**

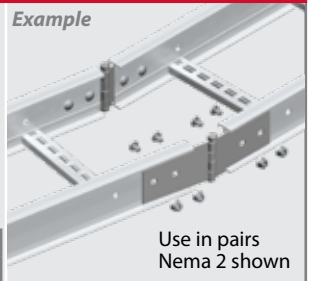
4 x **SB** Splice Bolts and **CN** Splice Nuts required per Splice Plate.



**NEMA 20C**

8 x **SB** Splice Bolts and **CN** Splice Nuts required per Splice Plate.

*Example*



Use in pairs  
Nema 2 shown

Nema 1

**N1HSA**

**B**

Nema 2

**N2HSA**

**B**

Nema 3

**N3HSA**

**C**

Nema 20C

**N20CHSA**

**C**

FASTENERS

STRUT SYSTEMS

CABLE SUPPORTS

FIRERATED

PIPE SUPPORTS