

### HEX SCREWS



Box Qty:  
**50-200** varies depending on screw size.

Size = thread size x length (mm)

Size	Zinc Plated	Hot Dip Galvanised	Stainless Steel
M6x20	HS620Z <span style="color: green;">A</span>	HS620H <span style="color: red;">C</span>	HS620S <span style="color: red;">C</span>
M6x25	HS625Z <span style="color: green;">A</span>	HS625H <span style="color: green;">A</span>	HS625S <span style="color: red;">C</span>
M6x30	HS630Z <span style="color: green;">A</span>	HS630H <span style="color: green;">A</span>	HS630S <span style="color: red;">C</span>
M6x40	HS640Z <span style="color: green;">A</span>	-	HS640S <span style="color: red;">C</span>
M8x20	HS820Z <span style="color: green;">A</span>	HS820H <span style="color: green;">A</span>	HS820S <span style="color: green;">A</span>
M8x25	HS825Z <span style="color: green;">A</span>	HS825H <span style="color: green;">A</span>	HS825S <span style="color: green;">A</span>
M8x30	HS830Z <span style="color: green;">A</span>	HS830H <span style="color: green;">A</span>	HS830S <span style="color: green;">A</span>
M8x40	HS840Z <span style="color: green;">A</span>	HS840H <span style="color: green;">A</span>	HS840S <span style="color: green;">A</span>
M10x20	HS1020Z <span style="color: green;">A</span>	HS1020H <span style="color: green;">A</span>	HS1020S <span style="color: green;">A</span>
M10x25	HS1025Z <span style="color: green;">A</span>	HS1025H <span style="color: green;">A</span>	HS1025S <span style="color: green;">A</span>
M10x30	HS1030Z <span style="color: green;">A</span>	HS1030H <span style="color: green;">A</span>	HS1030S <span style="color: green;">A</span>
M10x40	HS1040Z <span style="color: green;">A</span>	HS1040H <span style="color: green;">A</span>	HS1040S <span style="color: green;">A</span>
M12x25	HS1225Z <span style="color: green;">A</span>	HS1225H <span style="color: green;">A</span>	HS1225S <span style="color: green;">A</span>
M12x30	HS1230Z <span style="color: green;">A</span>	HS1230H <span style="color: green;">A</span>	HS1230S <span style="color: green;">A</span>
M12x40	HS1240Z <span style="color: green;">A</span>	HS1240H <span style="color: green;">A</span>	HS1240S <span style="color: green;">A</span>
M12x50	HS1250Z <span style="color: green;">A</span>	HS1250H <span style="color: green;">A</span>	HS1250S <span style="color: red;">C</span>

### HEX NUTS



Box Qty:  
**50-2000** varies depending on nut size.

Threaded Size	Zinc Plated	Hot Dip Galvanised	Stainless Steel
M6	HN6Z <span style="color: green;">A</span>	HN6H <span style="color: green;">A</span>	HN6S <span style="color: green;">A</span>
M8	HN8Z <span style="color: green;">A</span>	HN8H <span style="color: green;">A</span>	HN8S <span style="color: red;">C</span>
M10	HN10Z <span style="color: green;">A</span>	HN10H <span style="color: green;">A</span>	HN10S <span style="color: green;">A</span>
M12	HN12Z <span style="color: green;">A</span>	HN12H <span style="color: green;">A</span>	HN12S <span style="color: green;">A</span>
M16	HN16Z <span style="color: red;">C</span>	HN16H <span style="color: red;">C</span>	HN16S <span style="color: red;">C</span>

### WEDGE NUTS



Box Qty:  
**100**

Thread Size	Zinc Plated	Stainless Steel
M6	WN6Z <span style="color: red;">C</span>	-
M8	WN8Z <span style="color: red;">C</span>	-
M10	WN10Z <span style="color: red;">C</span>	WN10S <span style="color: red;">C</span>

### FLAT WASHERS



Box Qty:  
**100-500** varies depending on thread size.

Threaded Size	Zinc Plated	Hot Dip Galvanised	Stainless Steel
M6	FW6Z <span style="color: green;">A</span>	FW6H <span style="color: green;">A</span>	FW6S <span style="color: green;">A</span>
M8	FW8Z <span style="color: green;">A</span>	FW8H <span style="color: green;">A</span>	FW8S <span style="color: green;">A</span>
M10	FW10Z <span style="color: green;">A</span>	FW10H <span style="color: green;">A</span>	FW10S <span style="color: green;">A</span>
M12	FW12Z <span style="color: green;">A</span>	FW12H <span style="color: green;">A</span>	FW12S <span style="color: green;">A</span>
M16	FW16Z <span style="color: red;">C</span>	FW16H <span style="color: red;">C</span>	FW16S <span style="color: red;">C</span>

### EZYSTRUT SPLICE COUNTERBORE NUT

Pack Qty:  
**100**



Thread Size	Zinc Plated	Hot Dip Galvanised	Stainless Steel
M10	CNZ <span style="color: red;">C</span>	CNH <span style="color: green;">A</span>	CNS <span style="color: green;">A</span>

### SPRING WASHERS



Box Qty:  
**100-200** varies depending on thread size.

Threaded Size	Zinc Plated	Hot Dip Galvanised	Stainless Steel
M6	SW6Z <span style="color: green;">A</span>	SW6H <span style="color: green;">A</span>	SW6S <span style="color: green;">A</span>
M8	SW8Z <span style="color: green;">A</span>	SW8H <span style="color: green;">A</span>	SW8S <span style="color: green;">A</span>
M10	SW10Z <span style="color: green;">A</span>	SW10H <span style="color: green;">A</span>	SW10S <span style="color: green;">A</span>
M12	SW12Z <span style="color: green;">A</span>	SW12H <span style="color: green;">A</span>	SW12S <span style="color: green;">A</span>
M16	SW16Z <span style="color: red;">C</span>	SW16H <span style="color: red;">C</span>	SW16S <span style="color: red;">C</span>

### EZYSTRUT SPLICE BOLT

Pack Qty:  
**100**



Thread Size	Zinc Plated	Hot Dip Galvanised	Stainless Steel
M10	SBZ <span style="color: red;">C</span>	SBH <span style="color: green;">A</span>	SBS <span style="color: green;">A</span>

**Service Guide Key:** A Usually in stock at all branches

C Normal lead time

B Usually in stock at head office

D Made to Order (lead time on enquiry)

**THREADED ROD**

■ Ask us about  
Rod Cutters



Supplied in 3m lengths

Threaded Size	Zinc Plated	Hot Dip Galvanised	Stainless Steel
M6	TR6Z <span style="color: green;">A</span>	-	-
M8	TR8Z <span style="color: green;">A</span>	TR8H <span style="color: green;">A</span>	TR8S <span style="color: orange;">C</span>
M10	TR10Z <span style="color: green;">A</span>	TR10H <span style="color: green;">A</span>	TR10S <span style="color: green;">A</span>
M12	TR12Z <span style="color: green;">A</span>	TR12H <span style="color: green;">A</span>	TR12S <span style="color: green;">A</span>
M16	TR16Z <span style="color: orange;">C</span>	TR16H <span style="color: orange;">C</span>	TR16S <span style="color: orange;">C</span>

**CHANNEL NUT, LONG SPRING**

Box Qty: **100**

Suits 41 mm high channel.  
Suits all 41 mm wide channel.



Threaded Size	Zinc Plated	Hot Dip Galvanised	Stainless Steel
M6	E1006Z <span style="color: green;">A</span>	E1006H <span style="color: green;">A</span>	E1006S <span style="color: green;">A</span>
M8	E1007Z <span style="color: green;">A</span>	E1007H <span style="color: green;">A</span>	E1007S <span style="color: green;">A</span>
M10	E1008Z <span style="color: green;">A</span>	E1008H <span style="color: green;">A</span>	E1008S <span style="color: green;">A</span>
M12	E1010Z <span style="color: green;">A</span>	E1010H <span style="color: green;">A</span>	E1010S <span style="color: green;">A</span>

**MUD GUARD WASHERS**



Box Qty:  
**100-200** varies depending on thread size.

Outside diameter 31mm

Threaded Size	Zinc Plated	Hot Dip Galvanised	Stainless Steel
M6	MW6Z <span style="color: green;">A</span>	MW6H <span style="color: green;">A</span>	MW6S <span style="color: orange;">C</span>
M8	MW8Z <span style="color: green;">A</span>	MW8H <span style="color: green;">A</span>	MW8S <span style="color: orange;">C</span>
M10	MW10Z <span style="color: green;">A</span>	MW10H <span style="color: green;">A</span>	MW10S <span style="color: orange;">C</span>
M12	MW12Z <span style="color: green;">A</span>	MW12H <span style="color: green;">A</span>	MW12S <span style="color: orange;">C</span>

**CHANNEL NUT, SHORT SPRING**

Box Qty: **100**

Suits 21mm high channel.  
Suits all 41mm wide channel.



Thread Size	Zinc Plated	Hot Dip Galvanised
M6	E4006Z <span style="color: green;">A</span>	E4006H <span style="color: green;">A</span>
M8	E4007Z <span style="color: green;">A</span>	E4007H <span style="color: green;">A</span>
M10	E4008Z <span style="color: green;">A</span>	E4008H <span style="color: green;">A</span>
M12	E4010Z <span style="color: green;">A</span>	E4010H <span style="color: green;">A</span>

Note: M12 Channel Nuts not suitable for 21mm high channel. An alternative is available on request.

**PAN HEAD SCREWS**



Box Qty:  
**100-200** varies depending on screw size.

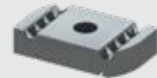
Size = thread size x length (mm)

Size	Zinc Plated	Stainless Steel
M6x16	PS616Z <span style="color: green;">A</span>	PS616S <span style="color: orange;">C</span>
M6x20	PS620Z <span style="color: green;">A</span>	PS620S <span style="color: orange;">C</span>
M6x25	PS625Z <span style="color: green;">A</span>	PS625S <span style="color: green;">A</span>
M8x25	PS825Z <span style="color: green;">A</span>	-

**CHANNEL NUT, NO SPRING**

Box Qty: **100**

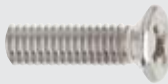
Suits all 41 mm wide channel



Thread Size	Zinc Plated	Hot Dip Galvanised
M6	E3006Z <span style="color: green;">A</span>	E3006H <span style="color: green;">A</span>
M8	E3007Z <span style="color: green;">A</span>	E3007H <span style="color: green;">A</span>
M10	E3008Z <span style="color: green;">A</span>	E3008H <span style="color: green;">A</span>
M12	E3010Z <span style="color: green;">A</span>	E3010H <span style="color: green;">A</span>

Note: M12 Channel Nuts not suitable for 21mm high channel. An alternative is available on request.

**COUNTERSUNK PHILLIPS SCREW**



Box Qty:  
**100-200** varies depending on screw size.

Size = thread size x length (mm)

Size	Zinc Plated	Stainless Steel
M6x16	CS616Z <span style="color: green;">A</span>	CS616S <span style="color: orange;">C</span>
M6x20	CS620Z <span style="color: green;">A</span>	CS620S <span style="color: orange;">C</span>
M6x25	CS625Z <span style="color: green;">A</span>	CS625S <span style="color: orange;">C</span>
M8x20	CS820Z <span style="color: orange;">C</span>	CS820S <span style="color: orange;">C</span>
M8x25	CS825Z <span style="color: orange;">C</span>	CS825S <span style="color: orange;">C</span>

**E3016 CHANNEL NUT, NO SPRING**

Box Qty: **100**

Suits all channel



Thread Size	Zinc Plated	Hot Dip Galvanised	Stainless Steel
M6	E3016Z <span style="color: green;">A</span>	E3016H <span style="color: green;">A</span>	E3016S <span style="color: green;">A</span>

FASTENERS

STRUT SYSTEMS

CABLE SUPPORTS

FIRERATED

PIPE SUPPORTS