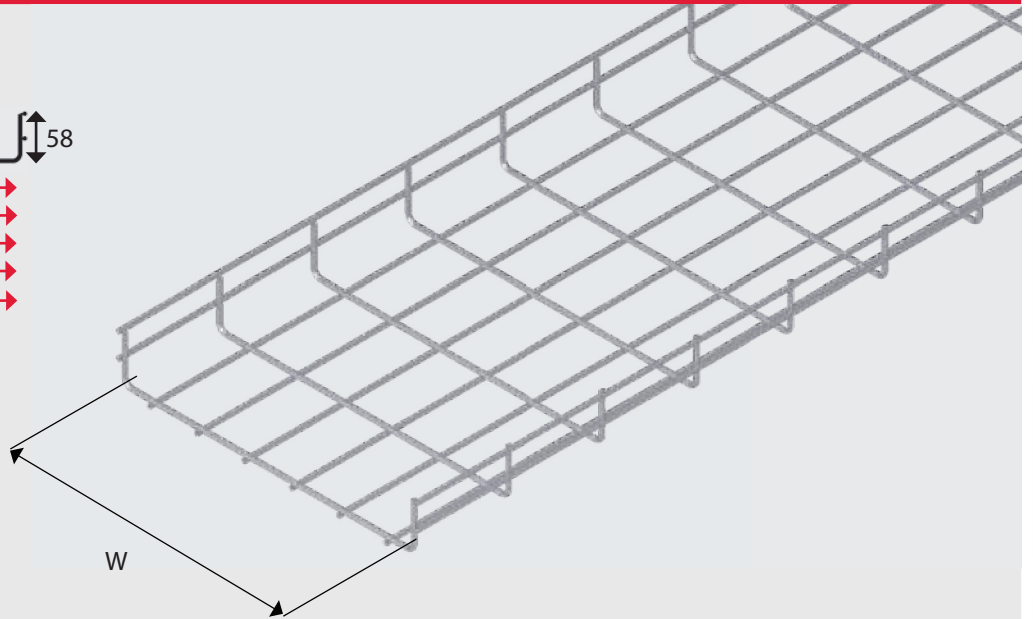
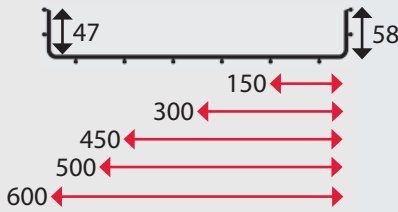


EZYMESH



PRODUCT DETAILS

EzyStrut EzyMesh provides premium performance in commercial and light industrial applications. Strong, versatile and easy to install EzyMesh is complemented with all the accessories you need. Your EzyMesh lengths can be created into bends, tees, risers and crosses to suit the application.

Tested to NEMA Standard VE1-2002.

STANDARD LENGTH

- 3 Metres

ORDERING DETAILS

Supplied per length

AVAILABLE FINISH	ORDERING CODE
Pre-Galvanised	EM...G
Zinc Plated	EM...Z
Hot Dip Galvanised	EM...H
Stainless Steel	EM...S

EzyMesh is available in stainless steel against firm orders only.

Ordering Code	Cable Laying Width - W (mm)	Cable Laying Depth (mm)	Overall Width (mm)	Side Rail Height (mm)
EM150	150	47	170	58
EM300	300	47	320	58
EM450	450	47	470	58
EM500	500	47	520	58
EM600	600	47	620	58

LOAD RATING AND DEFLECTION

SPAN METRE	LOAD PER METRE	DEFLECTION
3.0	27kg	Deflection 21mm
2.5	39kg	Deflection 16mm
2.0	61kg	Deflection 13mm
1.5	109kg	Deflection 9mm

EzyMesh Cable Mesh has been tested in accordance with NEMA standards. Loading applies to 600mm wide section and loading may vary for other widths.

A guide to deflection for continuous runs has been included for easy reference, however it should be noted that the positioning of splice joints and loading techniques can significantly impact upon the actual deflection.

PRODUCT DETAILS

A full range of EzyMesh accessories is available to complement the system and provide easy on site installation.

EzyMesh accessories are common for all mesh widths and can be used to make tees, bends, risers, and crosses.

ORDERING DETAILS

Supplied per length/individually

AVAILABLE FINISH

Hot Dip Galvanised
Zinc Plated

ORDERING CODE

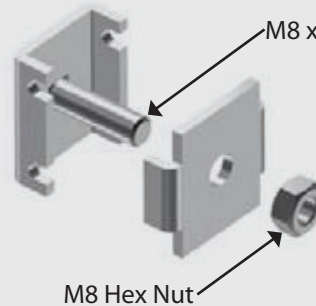
EM...H
EM...Z

EMBC EZYMESH CUTTER



EMSB EZYMESH BOLT JOINER KIT

Wt: 0.10kg



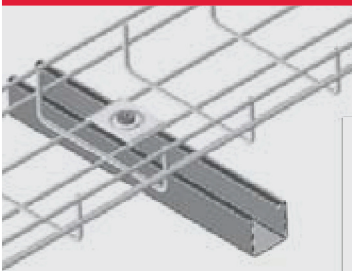
Manufactured from pressed steel, and supplied with Grade 4.6 fasteners for assembly.

Supplied individually

Available Finish: Z

EMHD EZYMESH HOLD DOWN BRACKET

Wt: 0.10kg



Manufactured from pressed steel.

Thickness: **2.0mm**
Screw Diameter: **M8**
Working Load: **350kg**
Safety Factor: **3:1**
Slipping Force: **100kg**
Supplied individually

Available Finish: Z, H

EMWB EZYMESH WALL MOUNT

Wt: 0.049kg



To be used on mesh up to 150mm in width. Fasteners required: **1 x M8**

Manufactured from pressed steel to AS1594.

Supplied individually

Available Finish: Z

EMS EZYMESH SIDE JOINER

Wt: 0.17kg



Manufactured from pressed steel to AS1594.

See assembly method, page 6.4 for required quantities to be used with side joiners.

Span (m)	Max. Allowable Load (kg/mtr)
3.0	27
2.5	39
2.0	61
1.5	109

Supplied individually

Available Finish: Z

Available Finish: Z

Available Finish: Z

EMSC EZYMESH BOTTOM JOINER

Wt: 0.017kg



Manufactured from pressed steel to AS1594.

See assembly method, page 6.4 for required quantities to be used with side joiners. To be used for straight joints only in conjunction with side joiners.

Span (m)	Max. Allowable Load (kg/mtr)
3.0	27
2.5	39
2.0	61
1.5	109

Supplied individually

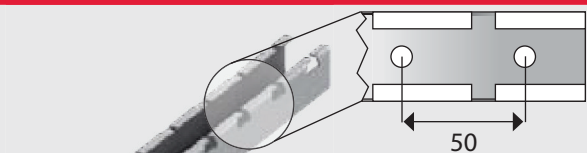
Available Finish: Z

Available Finish: Z

Available Finish: Z

EMT

EZYMESH TRAPEZE BRACKET



Manufactured from pressed steel to AS1594.

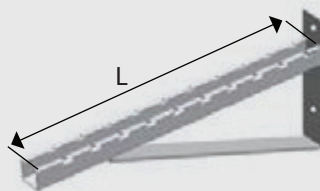
Supplied individually

Available Finish: **Z**

Ordering Code	Width (mm)	Load Capacity (kg)
EMT150	250	90
EMT300	400	90
EMT450	550	90
EMT500	650	90
EMT600	700	90
EMT3000	3000	90

EMC

EZYMESH CANTILEVER BRACKET



Manufactured from steel to AS1594.

Thickness: **2.0mm**
Hole Diameter: **11mm**
Hole Spacing: **50mm**
Working Load: **350kg**
Safety Factor: **3:1**

Supplied individually

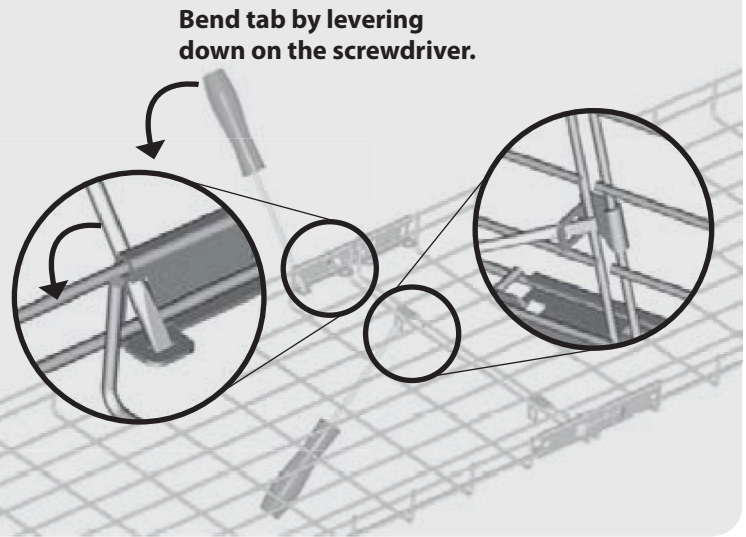
Available Finish: **Z, H**

Ordering Code	Length - L (mm)	Weight (kg)
EMC150	200	1.3
EMC300	350	1.8
EMC450	450	2.2
EMC500	550	2.3
EMC600	600	2.4

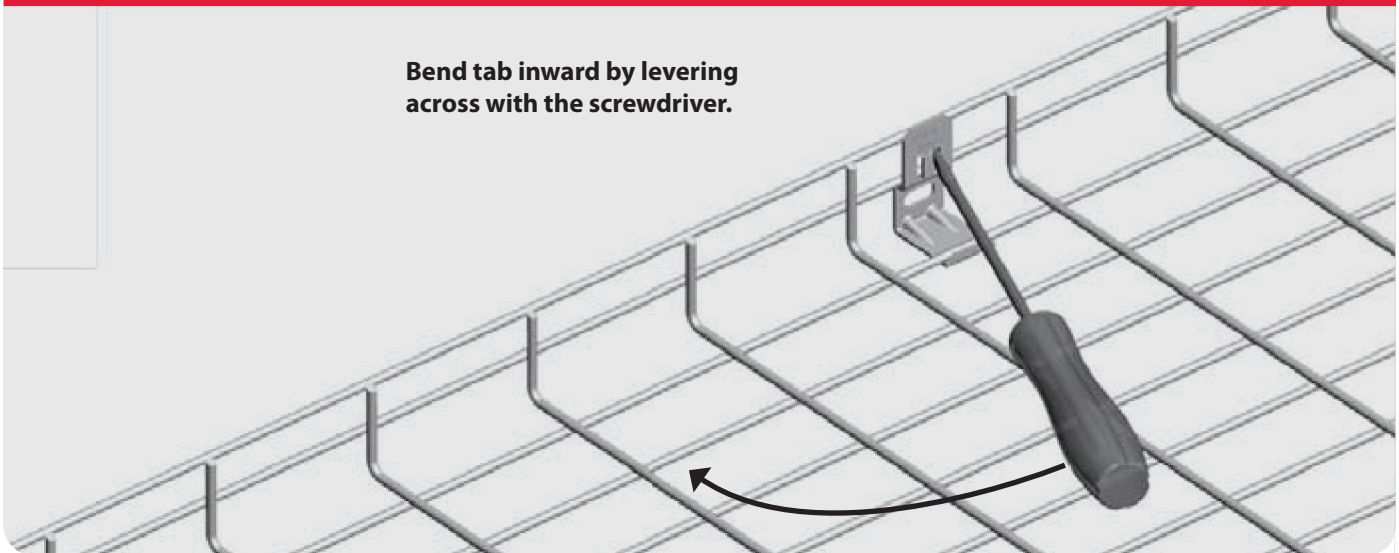
JOINING A STRAIGHT LENGTH

EzyMesh	Number of Side Joiners Required	Number of Bottom Joiners Required
EM150	2 x EMS	1 x EMSC
EM300	2 x EMS	2 x EMSC
EM450	2 x EMS	2 x EMSC
EM500	2 x EMS	2 x EMSC
EM600	2 x EMS	3 x EMSC

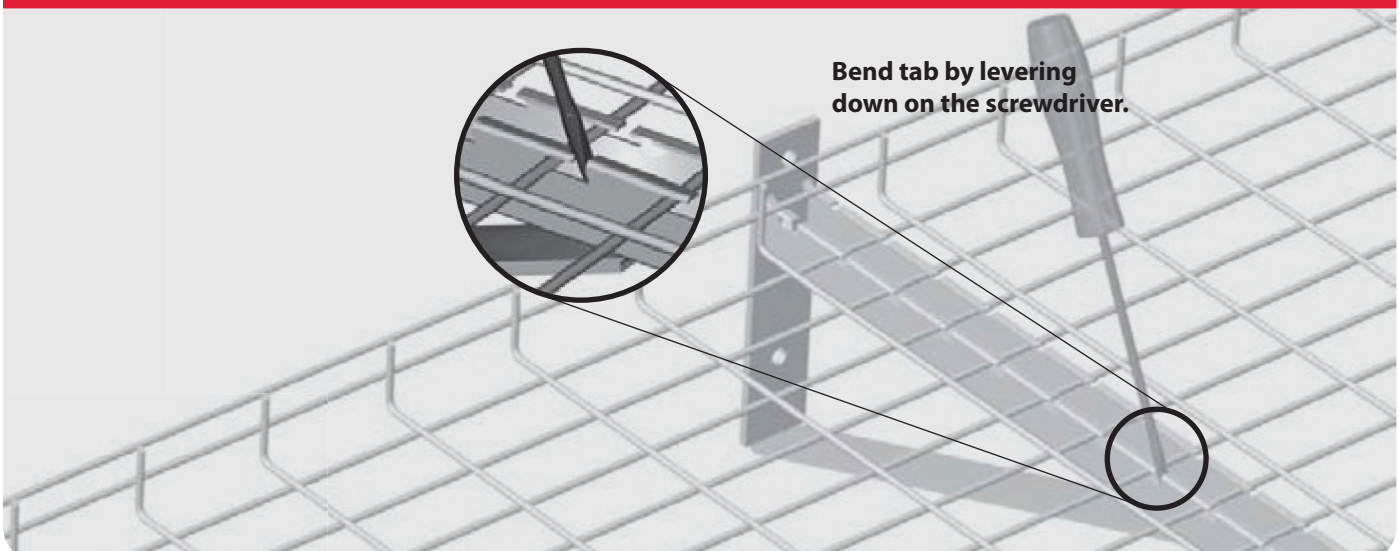
Order joiners separately for joining Cable Mesh lengths



ASSEMBLING A WALL MOUNT (EM150 ONLY)



ASSEMBLING A TRAPEZE AND CANTILEVER



EzyMesh	Number of Cut Outs Required	Number of Bolt Joiner Kits Required
EM150	3	3
EM300	6	6
EM450	4	4
EM500	5	5
EM600	6	6

BENDS

- 1 — Remove Mesh
- 2 — Bend to Shape
- 3 — Attach Bolt Joiners

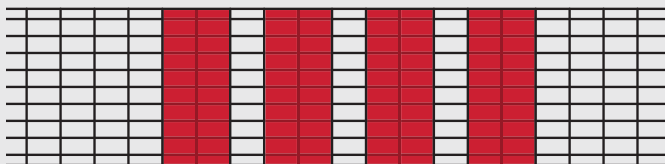
EM150 90° BEND



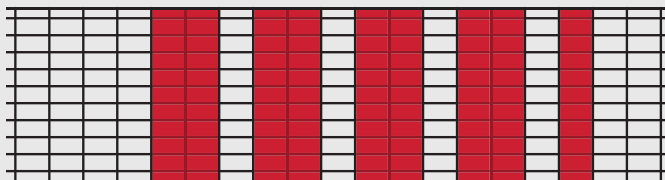
EM300 90° BEND



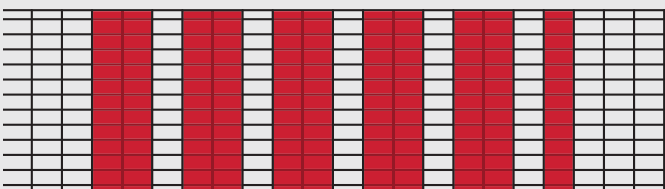
EM450 90° BEND



EM500 90° BEND



EM600 90° BEND



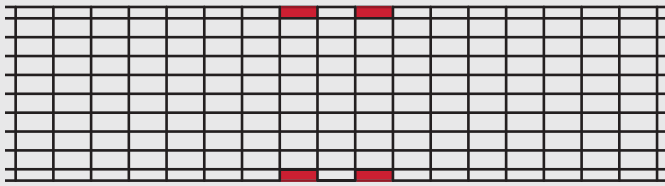
Radius	Number of Cut Outs Required
150	4
300	6
450	8
600	10

Note: Illustrations below show an EM450 as typical.

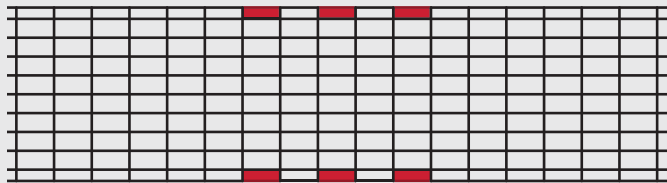
EXT. RISERS

- 1 — Remove Mesh
- 2 — Bend to Shape

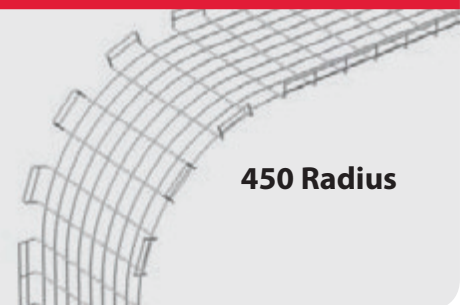
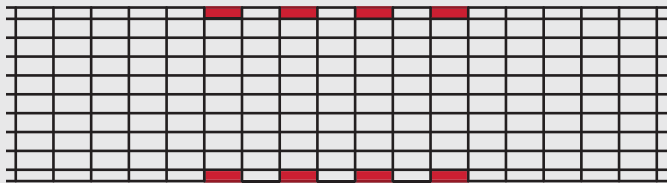
EXTERNAL RISER 150 RADIUS



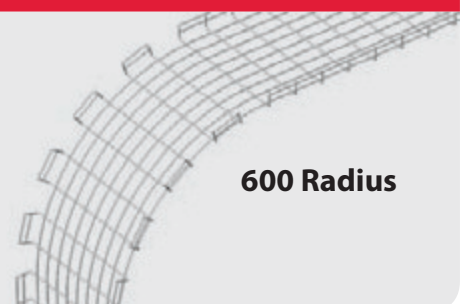
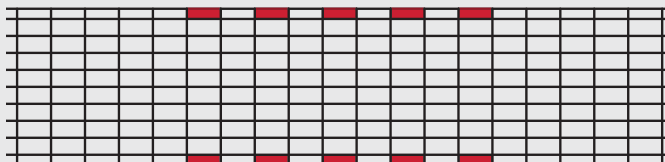
EXTERNAL RISER 300 RADIUS



EXTERNAL RISER 450 RADIUS



EXTERNAL RISER 600 RADIUS



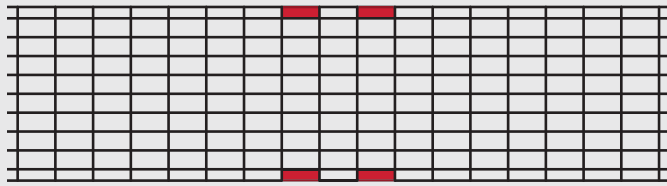
Radius	Number of Cut Outs Required
150	4
300	6
450	8
600	10

Note: Illustrations below show an EM450 as typical

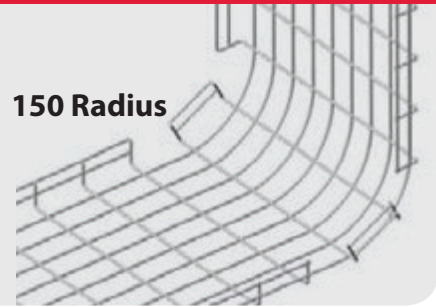
INT. RISERS

- 1 — Remove Mesh
- 2 — Bend to Shape

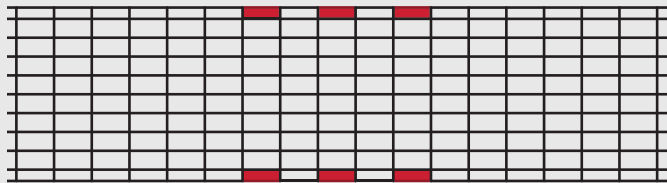
INTERNAL RISER 150 RADIUS



150 Radius



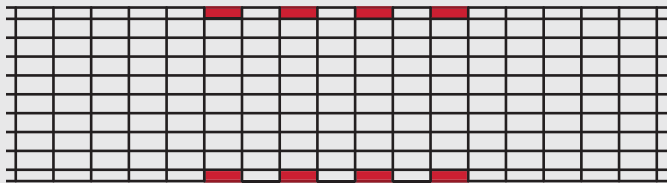
INTERNAL RISER 300 RADIUS



300 Radius



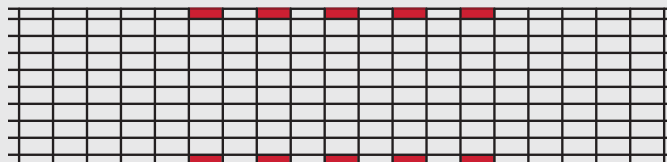
INTERNAL RISER 450 RADIUS



450 Radius



INTERNAL RISER 600 RADIUS



600 Radius



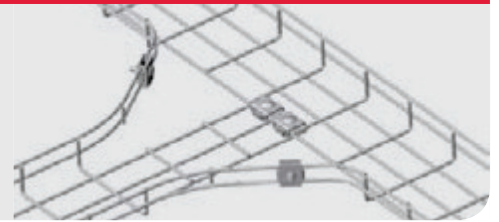
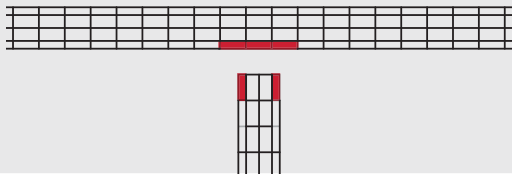
- 1 Channel/Strut
- 2 Fasteners
- 3 Cantilever Brackets
- 4 Fittings
- 5 Cable Tray
- 6 Cable Mesh
- 7 Steel Cable Ladder
- 8 Aluminium Cable Ladder
- 9 FRP Cable Ladder
- 10 Cable Ladder Covers

EzyMesh	Number of Bolt Joiner Kits Required
EM150	4
EM300	4
EM450	6
EM500	6
EM600	7

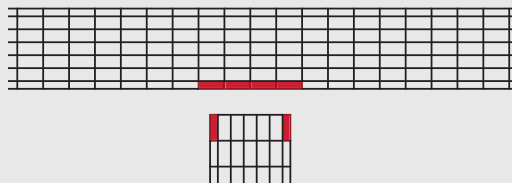
TEES

- 1 — Remove Mesh
- 2 — Bend to Shape
- 3 — Attach Bolt Joiners

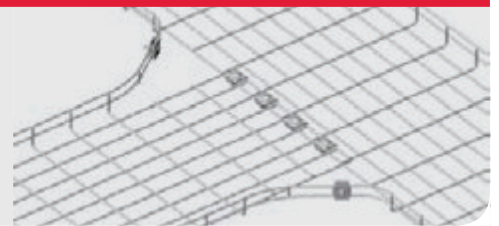
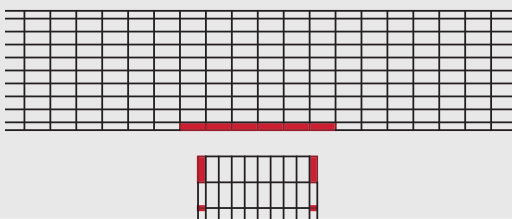
EM150 TEE



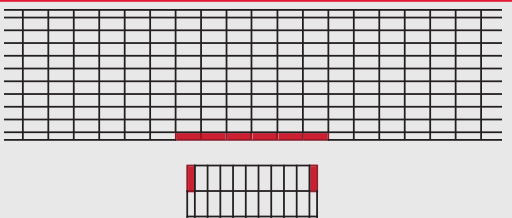
EM300 TEE



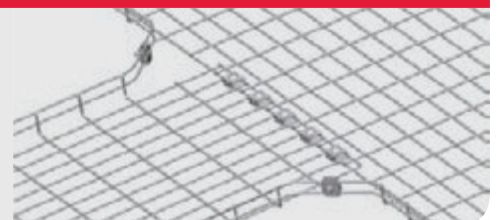
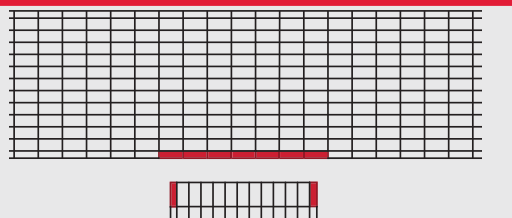
EM450 TEE



EM500 TEE



EM600 TEE

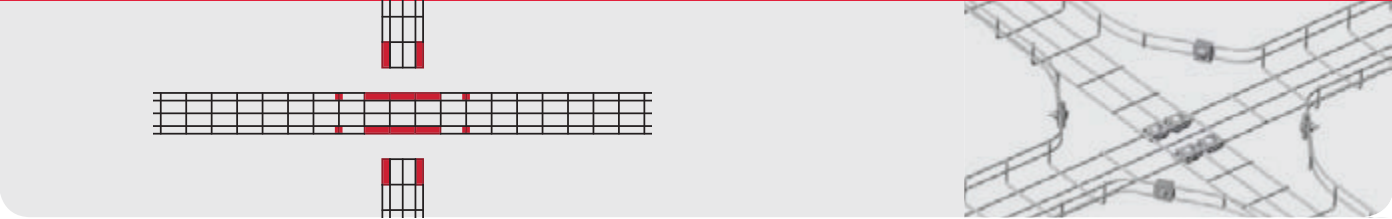


EzyMesh	Number of Bolt Joiner Kits Required
EM150	8
EM300	8
EM450	12
EM500	12
EM600	14

CROSSES

- 1 — Remove Mesh
- 2 — Bend to Shape
- 3 — Attach Bolt Joiners

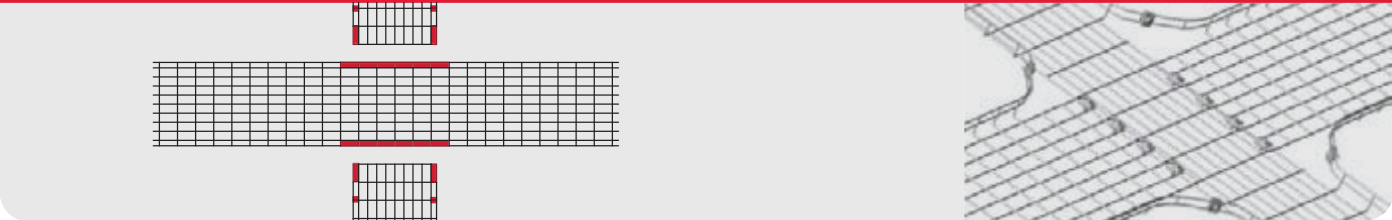
EM150 CROSS



EM300 CROSS



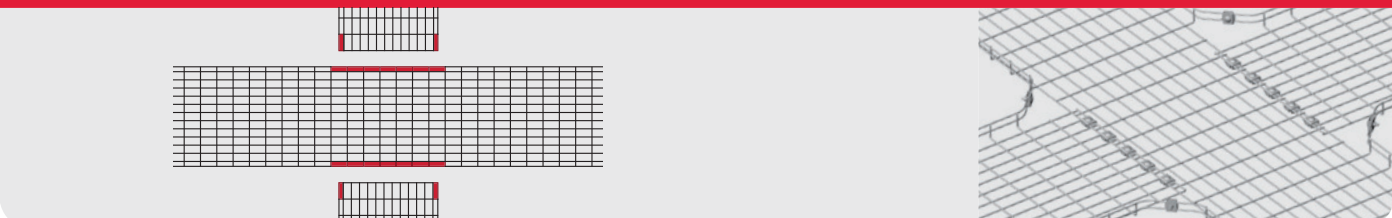
EM450 CROSS



EM500 CROSS



EM600 CROSS



- 1 Channel/Strut
- 2 Fasteners
- 3 Cantilever Brackets
- 4 Fittings
- 5 Cable Tray
- 6 Cable Mesh
- 7 Steel Cable Ladder
- 8 Aluminium Cable Ladder
- 9 FRP Cable Ladder
- 10 Cable Ladder Covers