



Side



Top



Front



Angle

MINITUBE

IN-LINE DUCT MOUNTED FAN

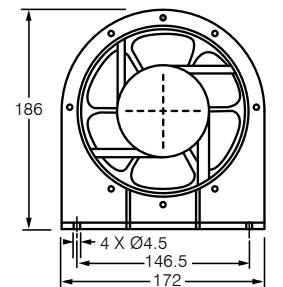
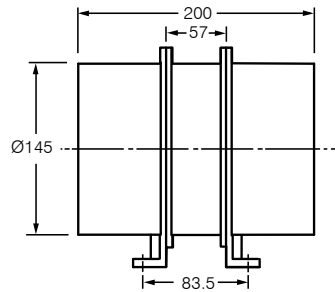


The Minitube Series of duct mounted axial fans is suitable for exhausting or supplying air in domestic and commercial applications such as bathrooms, toilets, ensuites and apartments.

- Includes robust mounting feet.
- Light-weight but robust aluminium fan housing with plastic spigots.
- Axial impellers made from plastic.
- Matches 150mm standard duct size.
- Can be speed controlled.
- Can be mounted in any position.
- Comes with plug and lead.

ACCESSORIES

- VA2.0 Speed Controller.
- Flexible Duct - Fire Rated AS/NZS 4254.
- Backdraft Dampers.
- Internal and external grilles.



All dimensions in mm

MODEL NO.	AIR FLOW M ³ /HR [†]	L/ SEC [†]	POWER SUPPLY	INPUT POWER	AVG. dB(A) @ 3M	DUCT SIZE
MTP132	361	100	50-60Hz	28W	45	150

[†] Air flow without duct and fittings

See page 110 for performance curves.