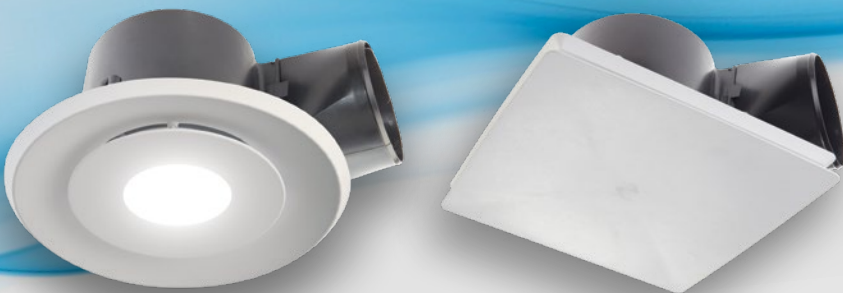


RAPID RESPONSE

Header Box Exhaust Fan



Powerful Performance
Quiet Operation



The stylish **Rapid Response** header box exhaust fan is the quietest and most powerful in its class. Its aerodynamic and fully optimised design minimises resistance and produces strong, efficient air flow performance.



FANTECH
Intelligent Ventilation

The quietest and most powerful in its class

The Rapid Response ceiling mounted header box fan features a fully optimised inlet cone and centrifugal impeller that maximises air pressure and ensures rooms are quickly cleared of steam and unpleasant odours. Its clever design includes a unique swing clip and removable spigot that makes it very easy to install.



Rapid Response fan body available in 8 inch and 10 inch models.



IPX4



Low noise



Powerful air flow



Easy to install



Rapid Response Standard Grilles

The stylish and modern Rapid Response grille is available in round and square designs with white or black finish (black finish only available with 10" model).

- Innovative design allows grilles to be easily removed for cleaning
- Available in 2 sizes to suit 8" and 10" Rapid Response header box fan
- Quick and easy to install to fan body
- Can be retrofitted to a previously installed Rapid Response fan



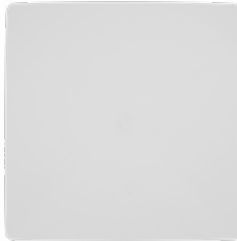
Round grille with black finish



Square grille with black finish



Round grille with white finish



Square grille with white finish

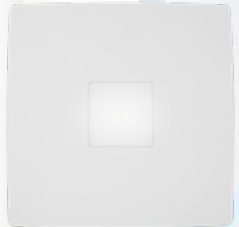
Rapid Response Grilles with LED

The Rapid Response grille with LED light will brighten up any bathroom, ensuite or toilet. They are quick and easy to install, and feature a stylish, modern design to suit any setting. For added convenience the LED light can be controlled separately to the fan.

- Available in round and square designs with white finish
- Available in 2 sizes to suit 8" and 10" Rapid Response fan
- 8" LED model is ideal for toilets and powder rooms, as it combines both a fan and light in-one
- Can be retrofitted to a previously installed Rapid Response fan
- Innovative design allows grilles to be easily removed for cleaning
- Complies to: AS/NZS 60598.2.2:2001 and AS/NZS 60598.1:2013 Certificate No.: SAA152082



Round grille with LED light



Square grille with LED light

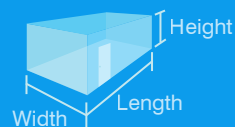


Rapid Response Selection Guide

Step 1

Select fan body size

Calculate room volume in m³
(Length X Width X Height)



Select suitable fan body by matching it with your application and room volume (m³) in the table below

Application	8" fan body (RESPF8/T)	10" fan body (RESPF150/T)
Toilets Powder rooms Walk in wardrobes Laundries	Up to 30m ³	Up to 40m ³
Bathrooms Ensuites	Up to 10m ³	Up to 30m ³

Step 2

Select grille type

To suit 8" fan body (RESPF8/T)

To suit 10" fan body (RESPF150/T)

To suit 8" fan body (RESPF8/T)		To suit 10" fan body (RESPF150/T)	
	Square grille white finish (RESPG8-SQWH)		Square grille white finish (RESPG150SQWH)
	Square grille white finish with LED light (RESPG8-SQWH-LED)		Square grille white finish with LED light (RESPG150SQWH-LED)
	Round grille white finish (RESPG8-RNWH)		Square grille black finish (RESPG150SQBK)
	Round grille white finish with LED light (RESPG8-RNWH-LED)		Round grille white finish (RESPG150RNWH)
			Round grille white finish with LED light (RESPG150RNWH-LED)
			Round grille black finish (RESPG150RNBK)

Easy to install



Long clip-in spigot makes installation and duct connection easier.



Rotate swing clips to hold fan body in place.



Tighten screws so clips clamp onto ceiling board.

**RAPID
RESPONSE**
Header Box Exhaust Fan

Suitable for residential and light commercial applications

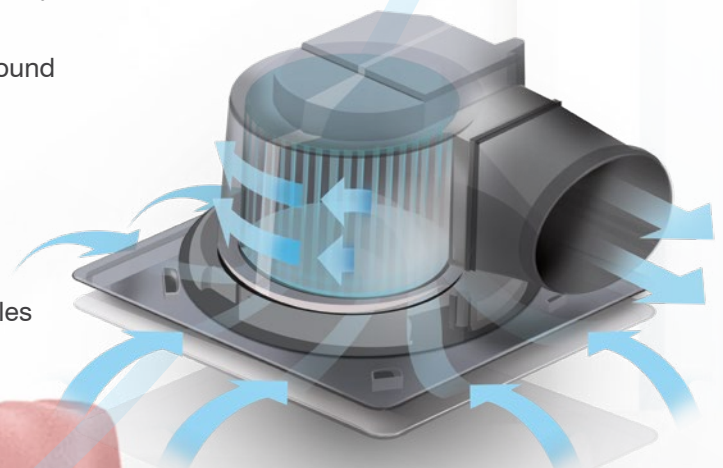
The modern and stylish Rapid Response header box fan is suitable for residential and light commercial buildings in applications such as toilets, bathrooms, laundries and ensuites. Its low profile, compact design and side exhaust outlet makes it suitable for mounting between floors and applications with limited ceiling space such as those with cathedral ceilings.

The Rapid Response housing is made from quality injected moulded, fire retardant, ABS plastic giving it a robust construction and reliable operation.

There are two sizes available; an 8 inch model and a 10 inch model, that are available with a 3 to 15 minute run-on timer. Both sizes are also available with modern looking round and square grilles that can include a high quality LED light (white finish models only).

Features and benefits

- The ultra quiet 8" model is ideal for odour and dampness removal from areas such as powder rooms, toilets, ensuites and walk in wardrobes
- 10" model provides stronger air flow performance to ensure steam is cleared from rooms such as bathrooms and ensuites
- Advanced impeller and housing design provides powerful air flow and minimises noise
- Can be retrofitted into an existing standard 8" and 10" round fan cutout
- Low resistance non-return backdraft damper maximises air flow performance
- Includes sealed for life ball bearings
- High strength swing clips make installation easy
- Available with stylish and modern square and round grilles
- Square grille can be easily rotated to align with walls



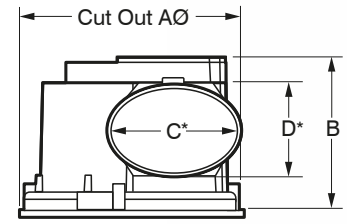
Optimised inlet cone and impeller blade design maximises air pressure.



Fan Body

Dimensional Data

Model Number	Dimensions, mm				App Weight (kg)
	Cut Out AØ	B	C*	D*	
RESPF8	250	195	94 (100mm spigot)	105 (100mm spigot)	2
RESPF8-T			170 (150mm spigot)	120 (150mm spigot)	
RESPF150	290	197	170	120	3
RESPF150T					



*RESPF8 comes with spigot to suit both 100mm and 150mm duct.

RESPF150 comes with spigot to suit 150mm duct only.

Technical Data

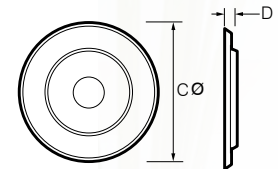
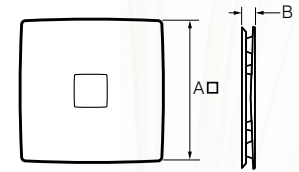
Model Number	Run-on timer	Air flow [#]		Fan Speed rev/sec	Average Sound Level dB(A) @ 3m	Watts	Volts
		m ³ /hr	L/sec				
RESPF8	No	216	60	18	29	30	240
RESPF8-T	Yes						
RESPF150	No	349	97	18	37	60	240
RESPF150T	Yes						

[#] Air flow without duct and fittings

Grilles

Dimensional Data

	Model Number	Description	Dimensions, mm			
			A□	B	CØ	D
8" Grille	RESPG8-SQWH	8" Square Grille White Finish	300	28	-	-
	RESPG8-SQWH-LED	8" Square Grille White Finish with LED Light	300	28	-	-
	RESPG8-RNWH	8" Round Grille White Finish	-	-	294	19
	RESPG8-RNWH-LED	8" Round Grille White Finish with LED Light	-	-	294	19
10" Grille	RESPG150SQWH	10" Square Grille White Finish	353	30	-	-
	RESPG150SQBK	10" Square Grille Black Finish	353	30	-	-
	RESPG150SQWH-LED	10" Square Grille White Finish with LED Light	353	30	-	-
	RESPG150RNWH	10" Round Grille White Finish	-	-	332	24
	RESPG150RNBK	10" Round Grille Black Finish	-	-	332	24
	RESPG150RNWH-LED	10" Round Grille White Finish with LED Light	-	-	332	24



LED Grilles Specifications

Model Number	Lumens (LM)	Input power (W)	Colour Temp (K)	Beam Angle (°C)
RESPG8-SQWH-LED	1000	12	4200	180
RESPG8-RNWH-LED	800	9	4200	180
RESPG150SQWH-LED	1000	12	4200	180
RESPG150RNWH-LED	800	9	4200	180



Scan the QR Code for more information

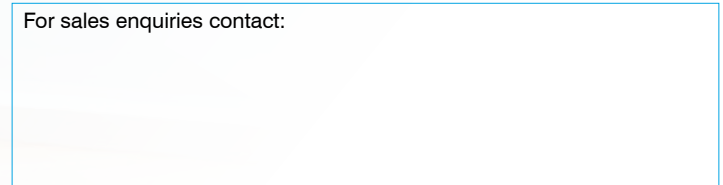


Fantech Pty. Ltd.

Victoria: (+61 3) 9554 7845
 New South Wales: (02) 8811 0400
 South Australia: (08) 8294 0530
 Northern Territory: (08) 8947 0447
 Queensland: (07) 3299 9888
 Western Australia: (08) 9209 4999
 A.C.T.: (02) 6280 5511
 New Zealand: (09) 444 6266

www.fantech.com.au |

For sales enquiries contact:



Specifications and design subject to change without notice.