

The NEW
BB

LED Bare Batten
MULTI

MATES
RATES

Offering more benefits and improved features at an even better price.

FAST FIT BASE
with pre-cut conduit points
for instant mounting

EXTRA-LARGE TERMINAL BLOCK

DUAL
POWER MODE
SINGLE OR TWIN OUTPUT



3 MULTI+
OUTPUT
technology



Now
with full diffuser

WORLD'S FASTEST FIT OFF!

WW 3000K
NW 4000K
W 6000K

120°
BEAM

80+
CRI

MELEC 4
3Y
WARRANTY

MELEC
ILLUMINATED BY DESIGN

melec.com.au

BB60 MULTI



BB60 Multi LED Bare Batten

ML-BB60-MULTI

Technical Information

Total power consumed: 10 / 20W*

Lumen output:

10W: WW 950lm | NW 1064lm | W 1020lm

20W: WW 1670lm | NW 2010lm | W 1860lm

Colour temperature:

WW 3000K | NW 4400K | W 6350K

CRI: 80+

Efficacy: 83-106lm/W

IP rating: IP20

Beam angle: 120 degrees

Dimmable: No

Power supply: Inbuilt

Average life: 36,000 hrs**

Warranty: 3 years (4 years for PLI)

Length: 614 mm | Width: 74 mm | Height: 67 mm

Upgrades: X-joiner (ML-BB-JN), suspension kit (ML-BB-SUS), microwave sensor (ML-BB-SN), emergency evacuation luminaire (ML-BB-EM)

* Total power consumed including driver

** Average life is calculated on expected average lifespan

BB120 MULTI



BB120 Multi LED Bare Batten

ML-BB120-MULTI

Technical Information

Total power consumed: 20 / 38W*

Lumen output:

20W: WW 2055lm | NW 2220lm | W 2130lm

38W: WW 3350lm | NW 4100lm | W 3750lm

Colour temperature:

WW 3000K | NW 4400K | W 6300K

CRI: 80+

Efficacy: 85.5-117lm/W

IP rating: IP20

Beam angle: 120 degrees

Dimmable: No

Power supply: Inbuilt

Average life: 36,000 hrs**

Warranty: 3 years (4 years for PLI)

Length: 1214 mm | Width: 74 mm | Height: 67 mm

Upgrades: X-joiner (ML-BB-JN), suspension kit (ML-BB-SUS), microwave sensor (ML-BB-SN), emergency evacuation luminaire (ML-BB-EM)

* Total power consumed including driver

** Average life is calculated on expected average lifespan

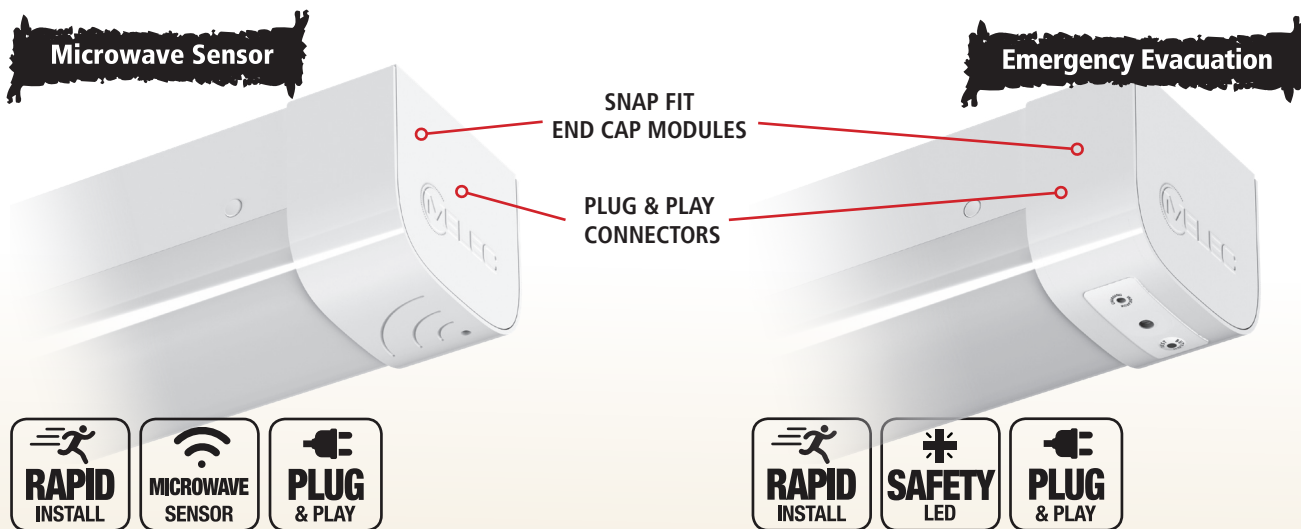
The **NEW**
BB

LED Bare Batten
MULTI

MATES RATES!

Accessories

The new BB range includes rapid install accessories that have been specifically designed to help make your install faster, easier and suitable for a range of applications.



BB Microwave Sensor

ML-BB-SN

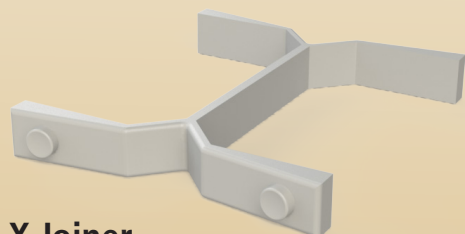
Operating voltage: 220-240VAC 50/60Hz
Switched power:
Max. 1400W (incandescent) | Max 800W (LED)
Stand-by power: <1W
Hold-time: 10s/30s/90s/6min/20min/30min
Daylight threshold: 5~50Lux
Sensor type: Microwave motion
Microwave frequency: 5.8GHz +/- 75MHz
Microwave power: <0.2mW
Detection range: Max. (WxH): 12m x 6m
Detection area: 10/25/50/75/100% of max range
Detection angle: 30 degrees~150 degrees
Mounting height: Max. 6m
Operating temperature: -35 ~ +70 degrees Celsius
Dimensions: 80L x 48W x 27.5H

BB Emergency Evacuation Luminaire

ML-BB-EM

Operating voltage: 90-265VAC 50/60Hz
Output voltage: DC3-18V
Output power (LED): 2W
Power factor: >0.93
Battery Voltage: 3.7V
Temperature range:
Ta: 40 degrees Celsius | Tc: 70 degrees Celsius
LIR Battery: 3.7V 2500mAH
Discharge duration: > 3 hours
Charge time: >24 hours
Lumen output: 140lm
Inverter size: 150*40*30mm
Warranty: 2 Year (1 year for battery)

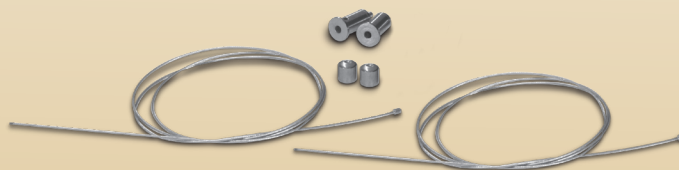
Note: One end cap can only be installed with the BB60-Multi. Two end caps can be installed simultaneously with the BB120-Multi.



X Joiner

ML-BB-JN

The infinity X joiner allows you to join the BB Multi series together to create a seamless row of light.



Suspension Kit

ML-BB-SUSKIT

The suspension kit adds further diversity to the range and its applications allowing the BB Multi to be installed as a suspended unit.



DESIGN // FUNCTION // TRUST
phone: 07 5438 8535 | www.melec.com.au