

MR BUNX mini

10W Oval Bunker Light



IP65
RATED



SMALL
PROFILE



SENSOR
AVAILABLE



EASY
INSTALL



SWAPPABLE
TRIMS



Available in black or white

Mini BUNX Weather Protected Bunker

Sparkys all around Australia love the BUNX range of IK10 rated bunker lights and now the range is extended thanks to the BUNX-MINI range. Available with or without a PIR sensor the BUNX-MINI range is available with swappable trims and grills and built in 3CCT's.



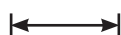
TECHNICAL INFORMATION

| | ML-MRBX-O-10-M | ML-MRBX-O-10-M-SN | ML-MRBX-OW-10-M | ML-MRBX-OW-10-M-SN |
|----------------------------|---|---------------------------------------|---------------------------------------|---------------------------------------|
| Total Power | 10W* | | | |
| Lumen Output: | WW 920LM NW 1000LM W 1000LM | WW 880LM NW 1000LM W 950LM | WW 930LM NW 1020LM W 1020LM | WW 920LM NW 970LM W 1000LM |
| Colour Temp: | 3000K (WW) 4000K (NW) 6000K (W) | | | |
| IP Rating: | IP65 | | | |
| IK Rating: | IK10 | | | |
| CRI: | 80 | | | |
| Efficacy: | WW 103LM/W NW 115LM/W W 115LM/W | WW 100LM/W NW 105LM/W W 105LM/W | WW 107LM/W NW 117LM/W W 110LM/W | WW 100LM/W NW 110LM/W W 110LM/W |
| Beam Angle: | 120° | | | |
| Input Current | 0.13A | | | |
| Inrush Current | 1.6A@240VAC | | | |
| Dimmable: | No | | | |
| Power Supply: | AC220 - 240V , built-in non-isolated driver | | | |
| Power Factor | 0.9 | | | |
| Frequency | 50/60Hz | | | |
| Average Life: | 56,000hrs** | | | |
| Dimensions : Base : | 220x120x66 | | | |
| Weight : | 0.4KG | | | |
| Operating Temp | -20°C to 45°C | | | |
| Compliance | SAA | | | |
| Connection | PA10 Terminal block | | | |
| LED Chip Brand | 2835 SMD | | | |
| Materials: | Polycarbonate body , diffuser and trim | | | |
| Warranty : | 5 YEARS | | | |

*Total power consumed including driver
** Average life is calculated on expected average lifespan

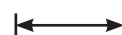
ADDITIONAL BEZEL ACCESSORIES

ML-MRBX-O-10-GRILL



220x120x66mm

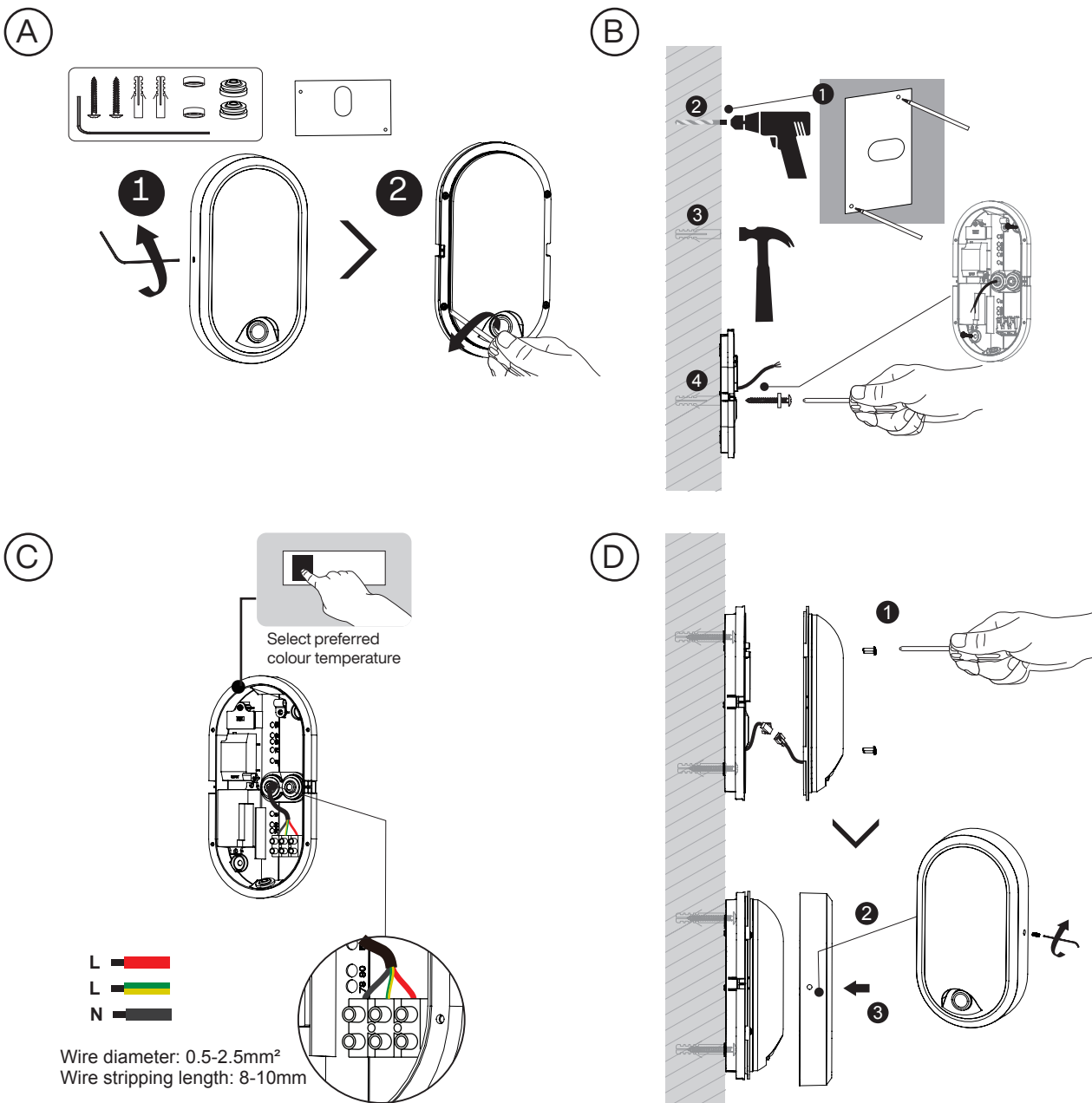
ML-MRBX-OW-10-GRILL



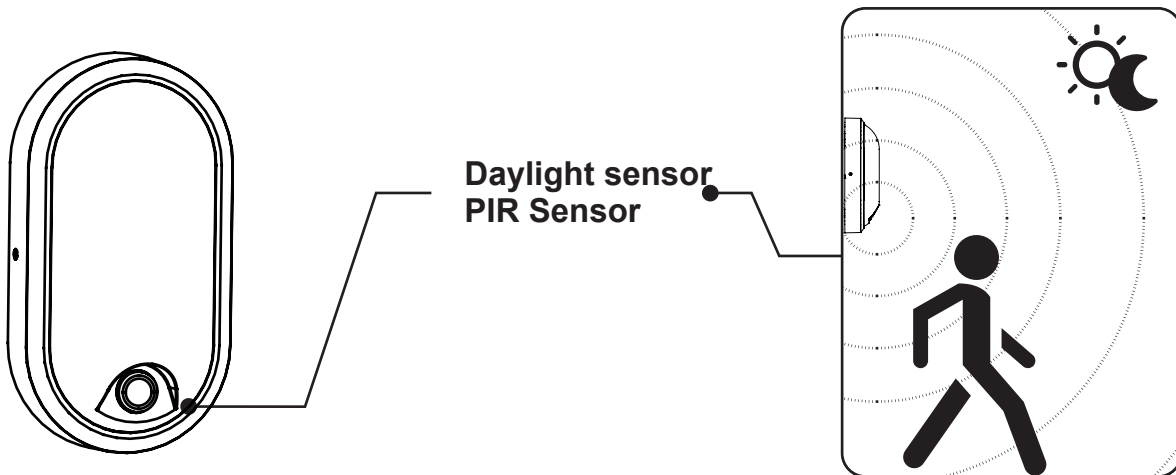
220x120x66mm

INSTALLATION GUIDE

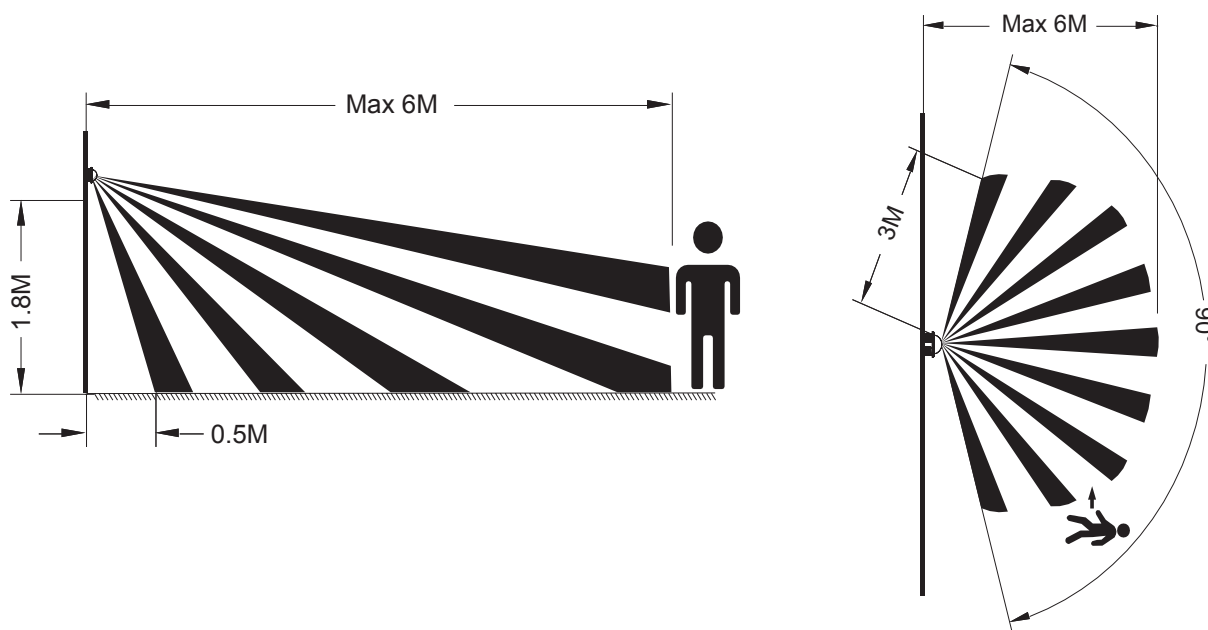
1. Ensure all power is off before beginning installation.
2. Remove the trim by unscrewing the hex head screw securing the trim. (A - 1)
3. Remove the cover by disassembling the screws securing the diffuser to access the base. (A - 2)
4. Place the included foam gasket onto the wall/area of installation and mark the mounting holes. (B - 1)
5. Place the base against the wall/ceiling (on top of the gasket) and fix securely using suitable screws/fixing methods. (B - 2, 3, 4) If you are running conduit to the base or splicing, remove the knockouts on the sides of the base and trim with a drill. (B)
6. Wire up the PA12 terminal block according to the L/E/N marks. (C)
7. Select correct output colour on the colour selection switch. (C)
8. Seal any holes to maintain ingress protection.
9. Reinstall the diffuser and LED board by reconnecting the wires and placing it onto the base and securing it with its screws, ensuring that the gasket is properly mated with the diffuser. (D - 1)
10. Reinstall the trim by reassembling the hex head screw to secure the trim. (D - 2, 3)
11. Test the safety and operation in accordance with all standards.



INSTALLATION GUIDE

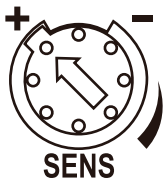
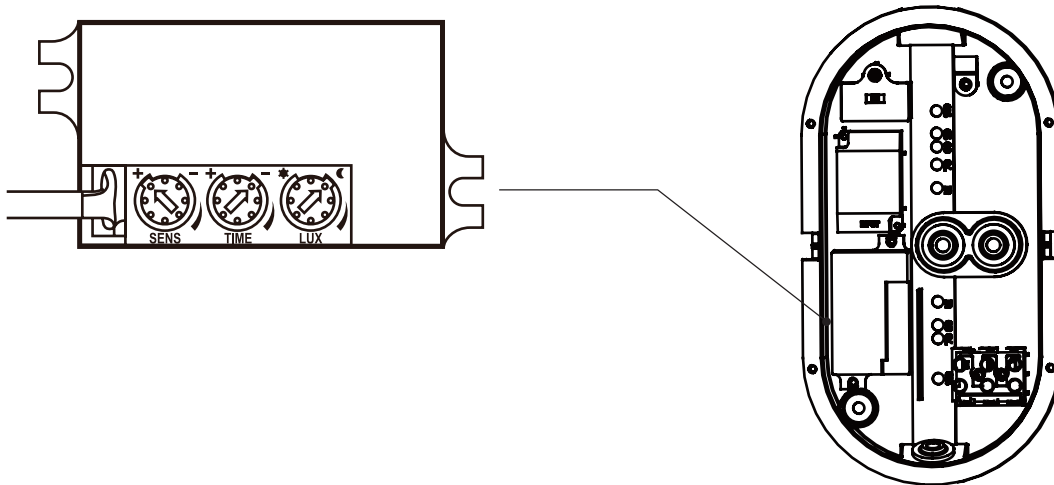


Detection diagram :



| | |
|---------------------------|--|
| Operating Voltage | AC220-240V |
| Power consumption | 1W Max |
| Microwave frequency | - |
| Transmission power | - |
| Detection angle | 90° |
| Detection area | 2 - 6M knob adjustable |
| Hold time | 10S - 7min knob adjustable |
| Daylight sensor | 10 - 2000LUX knob adjustable |
| Stand - by DIM level | - |
| Stand - by period | - |
| Dimming range | - |
| Microwave on/off function | - |
| Installation height | 1 . 8m (recommended wall mount height) |
| Minimum mounting distance | 2 - 6m |
| Operating temperature | -20°C to 40°C |

INSTALLATION GUIDE

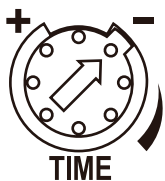


Detection area:

The detection area can be adjusted by the knob, clockwise adjustment increases the sensitivity, counterclockwise adjustment reduces the sensitivity, the maximum detection distance is 6 meters, the minimum detection distance is 2 meters.

Notice 1: The distance test is carried out under $T_a 25^\circ\text{C}$, 1.8 meters wall mounting installation height. The test result is based on the movement along the tangential direction of the sensor, and the detect distance can be adjusted by the dial switch.

Notice 2: Infrared sensor will be affected by temperature. Too high or too low temperature may affect the detect distance or even cause failure to sensor.



Hold time:

The hold time can be adjusted by the knob. Clockwise adjustment increases the hold time, counterclockwise adjustment reduces the hold time, the maximum hold time is 7min, and the minimum hold time is 10s.

Notice 1: The hold time counting should be started after the sensor is powered on and initialized.



Daylight sensor:

The light threshold can be selected through the Knob. Clockwise adjustment increases the light threshold, counterclockwise adjustment reduces the light threshold, the maximum light threshold is 2000lux, and the minimum light threshold is 10lux.

Notice 1: The light threshold may cause a large deviation in different lamps.

PLEASE NOTE

MUST BE INSTALLED BY A LICENSED ELECTRICIAN

- Read instructions carefully before attempting to install the fitting. Retain this guide for future reference
- Disconnect power before installing or servicing
- This fitting is for outdoor use and should not be used in areas with limited ventilation or high ambient temperatures
- Do not extend low voltage cables from the output of power supply
- All components must not be mechanically stressed
- Be careful not to damage or destroy conductive paths on the circuit board
- Follow all relevant electrical and safety standards (including AS3000)
- Correct electrical polarity must be observed as the wrong polarity may destroy the product and is not covered under warranty
- Damage by corrosion will not be honoured as a material defect claim. It is the user's responsibility to provide suitable protection against corrosive agents such as moisture, condensation and other harmful elements

FREE
ONSITE WARRANTY

EXCLUSIVE TO
MEMBERS ONLY



FREE ONSITE WARRANTY FOR 3 YEARS
INCLUDES PARTS & LABOUR

In conjunction with your standard product warranty