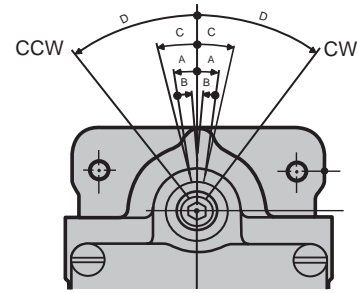




With mechanical travel of less than 6½° required to trip, this heavy duty limit switch operates with one normally open and one normally closed circuit.

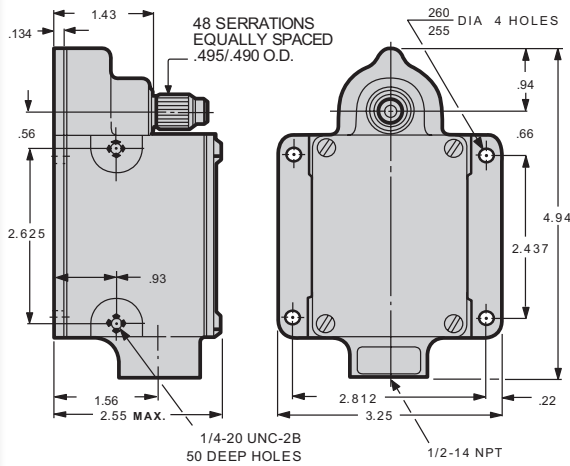
Can be furnished with standard and style 1 mountings.



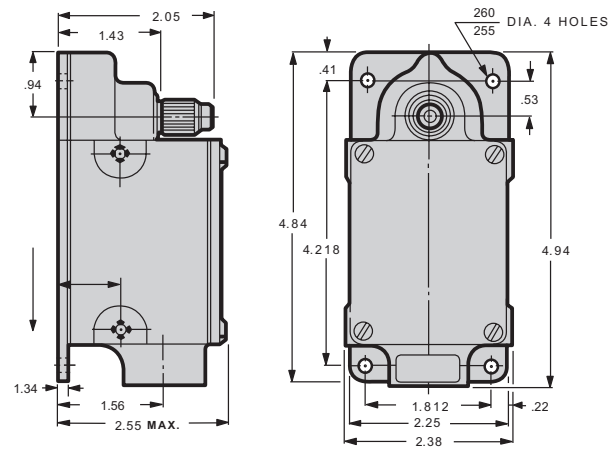
Direction of Rotation

- A. Pre-Travel 6°30'
- B. Differential Travel 4°
- C. Recommended Travel 7°
- D. Total Travel 35°
- E. Max. Torque During Pre-Travel 24 Lb-In
- F. Max. Torque at Total Travel 45 Lb-In
- G. Weight: Approx. 2.3 Lbs.

Dimensions and Mounting



Wide Mounting Plate



Long Mounting Plate

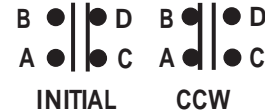
ORDERING INFO		ORDERING NUMBERS	
TYPE MOUNTING	ROTATION CW	ROTATION CCW	MAINTAINED (WITHOUT RETURN SPRING)
LONG MOUNTING	EA060-11100	EA060-12100	EA060-13100
WIDE MOUNTING	EA060-21100	EA060-22100	EA060-23100

Contact Configurations

FOR CW SWITCH



FOR CCW SWITCH



Specifications

Heavy Duty, Machine Tool Type, Single Pole, Double Throw, Quick Make, Quick Break, Butt Type, NEMA Form "Z" Contacts.

Enclosure is Water, Oil and Dust Tight. Meets (NEMA) 1, 4, & 13 Requirements.

Torque Necessary for Operation of Switch 24 in. lb. (Without Return Spring, Item 25, 12 in. lb.)

Ambient Temperature: -20°C to + 90°C

For Hazardous Location Requirements, see EA880 Series.

Continuous Current Rating - Amperes

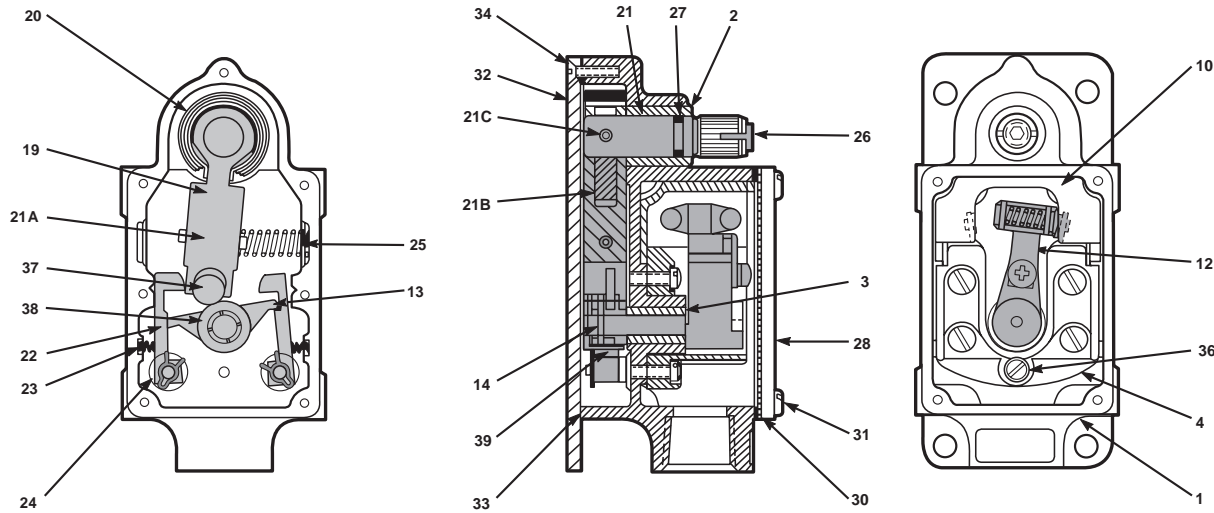
Volts	AC	DC
125	20	5
250	15	1.5
480	10	
600	5	

75-100% Power Factor

External Lever is Adjustable by 7°30' Increments thru 167°

FORM Z - A Form Z contact arrangement is one which has single-pole double-throw contacts with four terminals - two for normally open and two for normally closed. The function of this arrangement is to open one circuit and close the other. (NEMA Standard 11-12-1970).

Parts List



ITEM NO.	DESCRIPTION	QTY.	ITEM NO.	DESCRIPTION	QTY.
1	HOUSING ASSY.	1	24	LATCH RETAINING RING	2
2	BUSHING	1	25	RETURN SPRING	1
3	BUSHING	1	26	PIPE PLUG	1
4	CONTACT BLOCK	1	27	"O"-RING	1
10	END INSULATOR	1	28	TOP COVER	1
12	CONTACT LEVE ASSY.	1	30	TOP COVER GASKET	1
13	ROCKER ASSY.	1	31	TOP COVER SCREW	4
14	TAPER PIN	1	32	BOTTOM COVER	1
19	LEVER SHAFT ASSY. (INCLUDES ITEMS 20, 21, 21A, 21B & 21C)	1	33	BOTTOM COVER GASKET	1
20	TORSION SPRING	1	34	BOTTOM COVER SCREW	7
21	LEVER SHAFT	1	36	SCREW	2
21A	LEVER	1	37	FLOATING LEVER	1
21B	SPRING LEVER	1	38	WASHER	1
21C	ROLL PIN	1	39	TORSION SPRING	1
22	LATCH	2			
23	LATCH SPRING	2			