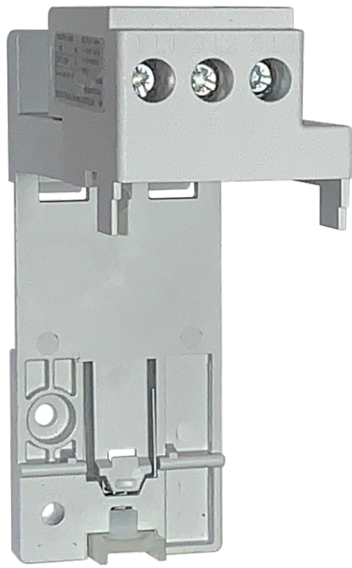


Catalogue No: **CEP7-1EPB**

SEPARATE MOUNTING ADAPTER CEP7-1 FRAME B

Motor Control and Drives > Motor Starting and Protection > Motor Protection > Sprecher + Schuh Overloads > CEP7
Gen 3 Electronic Overloads



Din rail / panel adapter

- CEP7-1EE: Trip Class 10 and 20, manual reset only
- CEP7-1EF: Trip Class 10, 15, 20, 30, manual or automatic reset
- 5:1 wide current adjustment range to cover a variety of motor applications
- Supports both single and three-phase operation in a single component
- A variety of accessories available for enhanced protection
- Current measurement-based protection
- Electronic design and thermal memory
- Phase loss protection
- Self-powered and direct-mount design with CA7 contactors

Representative Photo Only
(actual product may vary based on configuration selections)

SPECIFICATIONS

Product Series CEP7-1

REFERENCES

IECEX Certificate -

Supplier Declaration of Conformity: -

Installation Guide: -

User Manual: -

Manufacturer Datasheet: -

Manufacturer Catalogue & Product Selection: -