

Catalogue No: **SSFDN633P**

FUSE SWITCH SSF DN EXTERNAL HANDLE KIT 3P 63A

Power Distribution and Protection > Fuse Isolators and Fuse Gear > Fuse Switches > Socomec Fuse Switches (SSF and PSF Series) > SSF Standard Switch Fuses (20 to 1250A) > Din Fuse Types



Fuse Switch SSF DN 3 Pole 63A External Handle Kit

- 90-degree rotatory open-close. Supplied with handle and shaft for external operation
- Handles and switch fuse bodies both include a padlock facility to lock OFF the switch for lockout tagout (LOTO) insulation
- Suits DIN-NH fuse links 20 to 1250 A
- 100 kA fault rating
- 690 V AC rated
- Double breaking per pole (top and bottom) for isolated fuse removal
- Positive break indication
- TEST position for testing control circuits without energising the power poles using U-type auxiliary contacts
- Option: Fuse Monitoring Device for remote blown fuse indication
- Front Operated, Base mount
- Supplied with external handle and 320 mm shaft
- IP30
- Base Mounting

Representative Photo Only
(actual product may vary based on configuration selections)

SPECIFICATIONS

| | |
|--|---------------|
| Product Series | SSF |
| Component Type Fuse-gear | Fuse Switches |
| Fuse Cartridge Size | 00 size |
| Fuse Current Rating | 63 A |
| Un, Nominal Operational Voltage, AC | 690 V AC |
| Ue, Rated Operational Voltage, AC, min | 400 V AC |
| Ue, Rated Operational Voltage, AC, max | 690 V AC |
| Ue, Rated Operational Voltage, DC, min | 220 V DC |
| Ue, Rated Operational Voltage, DC, max | 440 V DC |
| Ie, Rated Operational Current, AC-21a, 400V | 63 A@400V |
| Ie, Rated Operational Current, AC-21a, 690V | 63 A@690V |
| Ie, Rated Operational Current, AC-22a, 400V | 63 A@400V |
| Ie, Rated Operational Current, AC-22a, 690V | 63 A@690V |
| Ie, Rated Operational Current, AC-23a, 400V | 63 A@400V |
| Ie, Rated Operational Current, AC-23a, 690V | 63 A@690V |
| Ie, Rated Operational Current, DC-21a, 220V | 63 A@220V |
| Ie, Rated Operational Current, DC-22a, 220V | 63 A@220V |
| Ie, Rated Operational Current, DC-23a, 220V | 40 A@220V |
| Current, Fuse-Protected Short-Circuit Capacity, 400V | 10.6 kA |
| Icw, short time withstand current, 1s (rms) | 80 kA for 1s |
| kW Rating, AC-23a, 400V, 3ph | 30 kW @400V |
| kW Rating, AC-23a, 690V, 3ph | 55 kW @690V |
| Poles | 3P |
| IP Rating | IP30 |
| Uimp, Impulse Withstand Voltage | 8 kV |
| Ui, Rated Insulation Voltage | 750 V (rms) |

Catalogue No: SSFDN633P

FUSE SWITCH SSF DN EXTERNAL HANDLE KIT 3P 63A

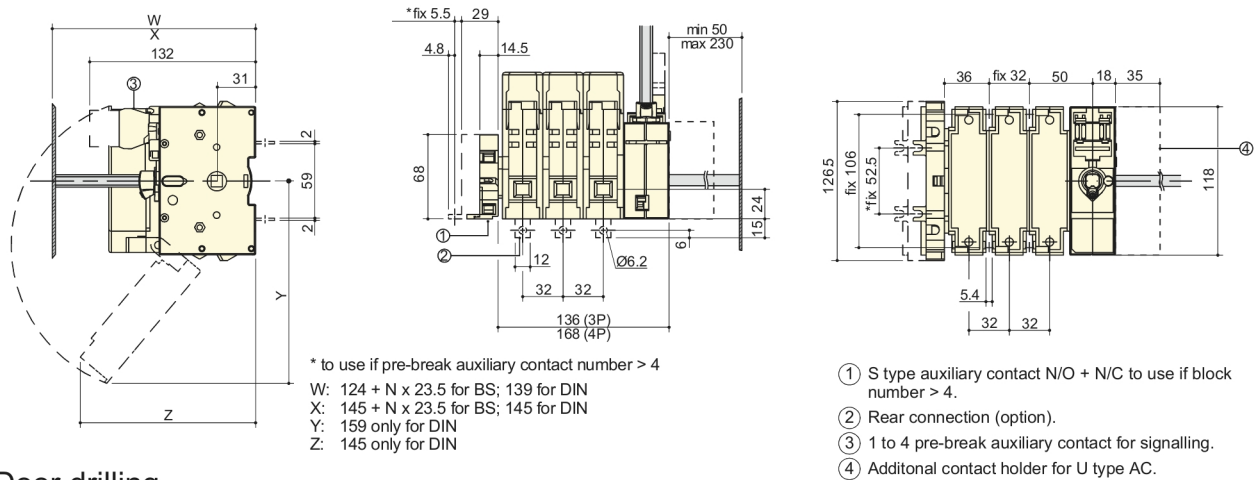
Power Distribution and Protection > Fuse Isolators and Fuse Gear > Fuse Switches > Socomec Fuse Switches (SSF and PSF Series) > SSF Standard Switch Fuses (20 to 1250A) > Din Fuse Types



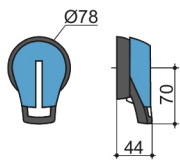
| | |
|--|---|
| Wire / Conductor Size, Flex Cable, Min | 10 mm ² min |
| Wire / Conductor Size, Flex Cable, Max | 25 mm ² max |
| Mechanical Service Life | 10000 cycles |
| Operating Temperature, Max | 70 °C max |
| Height | 118 mm |
| Width | 136 mm |
| Depth | 116 mm |
| Weight | 1 kg |
| Standards Compliance | AS 60269.2.1 AS/NZS 60947-3 DIN 43620-3 IEC 60269-2-1 IEC 60947-3 |
| Certifications | CCC KEMA |

REFERENCES

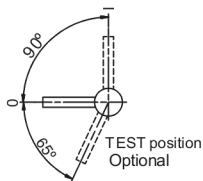
| | |
|---|---|
| IECEx Certificate | - |
| Supplier Declaration of Conformity: | - |
| Installation Guide: | - |
| User Manual: | - |
| Manufacturer Datasheet: | - |
| Manufacturer Catalogue & Product Selection: | - |



Door drilling

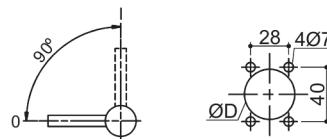


S1 handle



S type handle – front operation

Conventional fixing (from rear): D = 31 to 37 mm
Fast fixing (external, door closed): D = 37 mm



S type handle – side operation

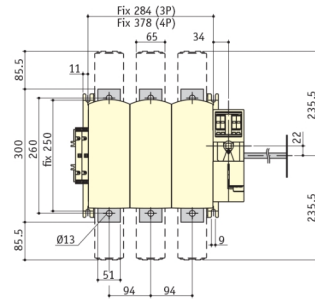
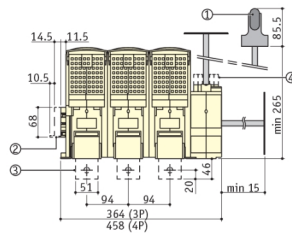
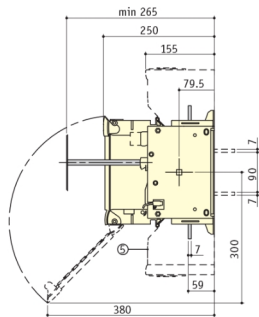
Conventional fixing (from rear): D = 31 to 37 mm
Fast fixing (external, door closed): D = 37 mm

Dimension Diagram

Catalogue No: **SSFDN633P**

FUSE SWITCH SSF DN EXTERNAL HANDLE KIT 3P 63A

Power Distribution and Protection > Fuse Isolators and Fuse Gear > Fuse Switches > Socomec Fuse Switches (SSF and PSF Series) > SSF Standard Switch Fuses (20 to 1250A) > Din Fuse Types



- ① Direct operation.
- ① S type auxiliary contact N/0 + N/C.
- ② Rear connection (option).

- ④ 1 to 8 pre-break auxiliary contact for signalling.
- ⑤ Terminal shrouds.

Technical Diagram