

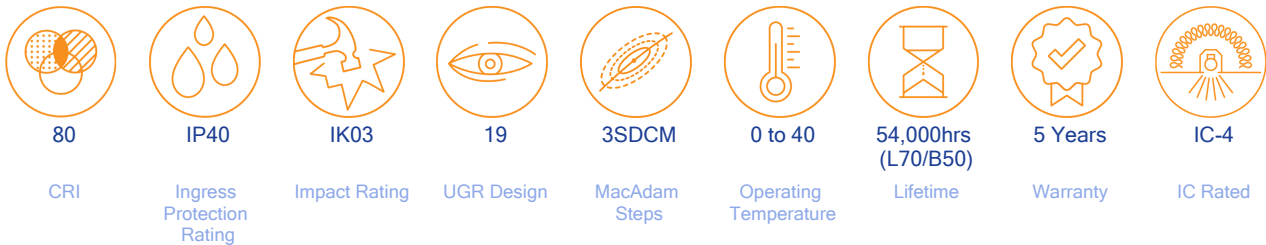
ECO Panel Gen3

The ECO PANEL GEN3 is a lightweight, energy efficient diffused panel designed with industry leading components and performance characteristics for the office and workplace of today. This latest upgrade comes with long life LEDs on a micro prismatic diffuser for UGR19 low glare applications. A family of slimline modern panels with long lumen maintenance with uniform distribution for the best in general lighting solutions.



- Slim, energy efficient backlit LED panel with a sleek and modern appeal.
- 3 in 1 Colour Select and Lumen Select allowing you to choose the right colour temperature and light level adjustment for the application.
- Comes with a microprismatic diffuser for comfortable and low glare lighting.

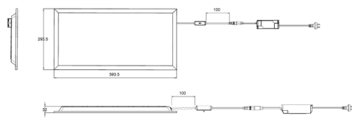
LUMEN SELECT[™] | COLOUR SELECT[™]



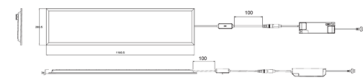
CODE	SYSTEM POWER	EXIT LUMEN	EFFICACY	CCT	DIMENSIONS	WEIGHT	INRUSH CURRENT	INRUSH CURRENT DURATION
ECOPL063CSEG3	13W	1347lm	100lm/W	4000K	L593.50 x W293.50 x H32 mm	1kg	2.9A	125µs
		1375lm		5000K				
		1286lm		6500K				
ECOPL123CSLSEG3	25W	2887lm	110lm/W	4000K	L1193.50 x W293.50 x H32 mm	1.9kg	17.5A	520µs
		34W		3724lm				
		3877lm		5000K				
		3552lm		6500K				
		2962lm		5000K				
ECOPL126CSLSEG3	36W	4262lm	110lm/W	4000K	L1193.50 x W593.50 x H37 mm	4kg	18.8A	688µs
		4426lm		5000K				
		4177lm		6500K				
		46W		5275lm				
		5536lm		5000K				
		5178lm	6500K					

ACCESSORY CODE	DESCRIPTION
FRM/PM18W	Plaster frame to mount in plaster ceiling - White, 600x300mm (sold separately)
FRM/PM18WIDE	Plaster frame to mount in plaster ceiling - White, 600x600mm (sold separately)
FRM/PM36W	Plaster frame to mount in plaster ceiling - White, 1200x300mm (sold separately)
FRM/PM36WIDE	Plaster frame to mount in plaster ceiling - White, 1200x600mm (sold separately)
UDFRM/6-3	Universal Deep Surface Mount Frame 600X300X70 (sold separately)
UDFRM/6-6	Universal Deep Surface Mount Frame 600X600X70 (sold separately)
UDFRM/12-3	Universal Deep Surface Mount Frame 1200X300X70 (sold separately)
UDFRM/12-6	Universal Deep Surface Mount Frame 1200X600X70 (sold separately)
WIRESUSP/ECOPL	Suspension Kit - Includes 2 sets for 1 panel (sold separately)

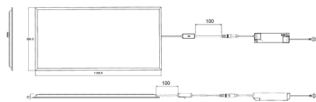
Line Drawings



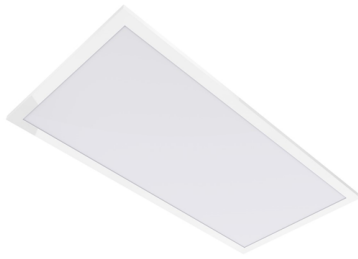
ECOPL063CSEG3



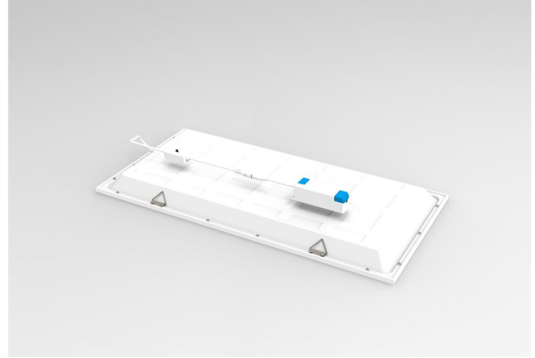
ECOPL123CSLSEG3



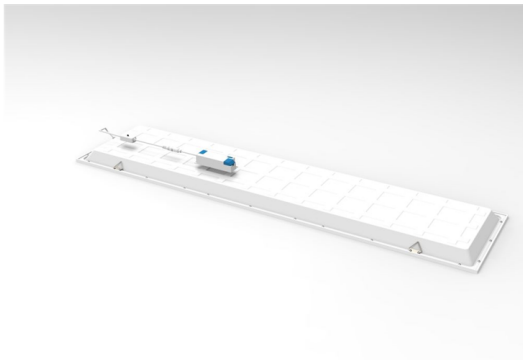
ECOPL126CSLSEG3



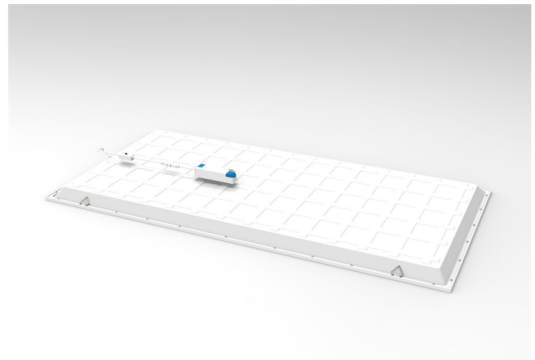
ECOPL063CSEG3



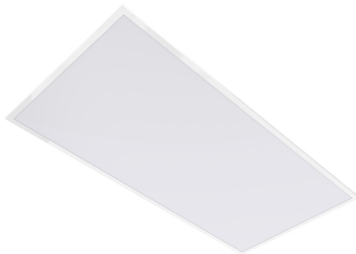
ECOPL063CSEG3



ECOPL123CSLSEG3



ECOPL126CSLSEG3



ECOPL126CSLSEG3