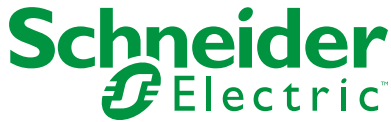


en



This service guide must be kept for future use.

**PLEASE NOTE**

- The installation, use, repair and maintenance of this electrical equipment must only be performed by a qualified electrician.
- All pertinent local, regional and state regulations must be observed during the installation and the use of this equipment.
- This equipment must not be installed if found to be damaged when unpacking.
- Schneider Electric cannot be held responsible for failure to follow the instructions contained in this document and the documents it refers to.
- These instructions must be followed throughout the lifetime of the product.

**⚠ ⚠ DANGER**

**HAZARD OF ELECTRIC SHOCK, EXPLOSION OR ARC FLASH**

Disconnect all power supply before installing and uninstalling.

Failure to follow these instructions will result in death or serious injury.

# 1 Installing

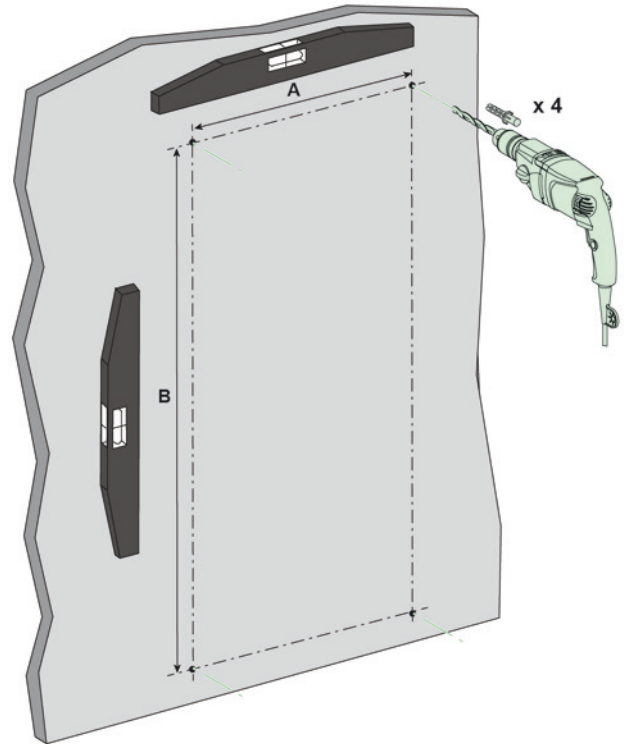
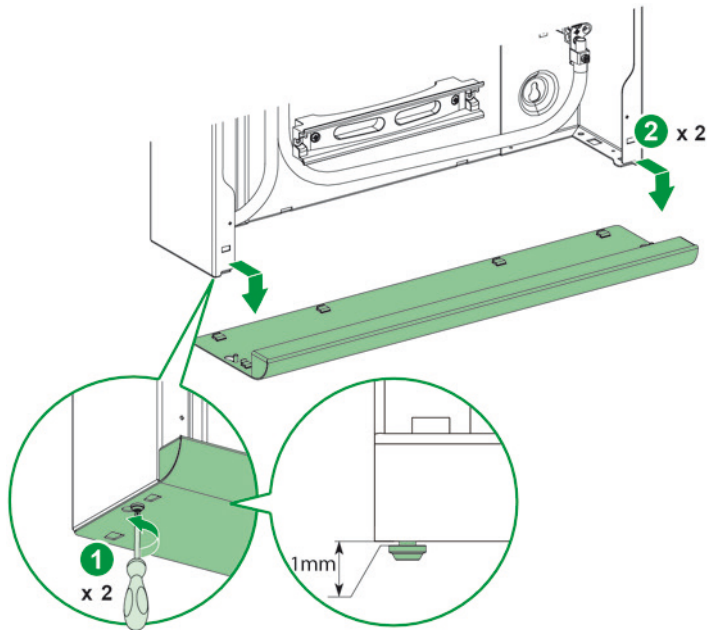
**⚠ ⚠ DANGER**

**HAZARD OF ELECTRIC SHOCK, EXPLOSION OR ARC FLASH**

- Install this product in accordance with National Wiring Regulation.
  - iC60H RCBO is only compatible with MC.
- Failure to follow these instructions will result in death or serious injury.

## 1.1 Install MC onto wall

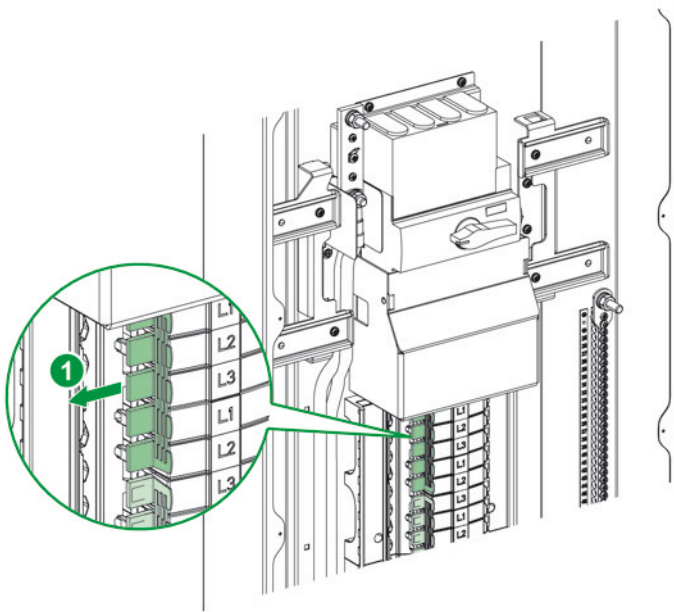
Note: It is recommended that the gland plate is removed prior to drilling



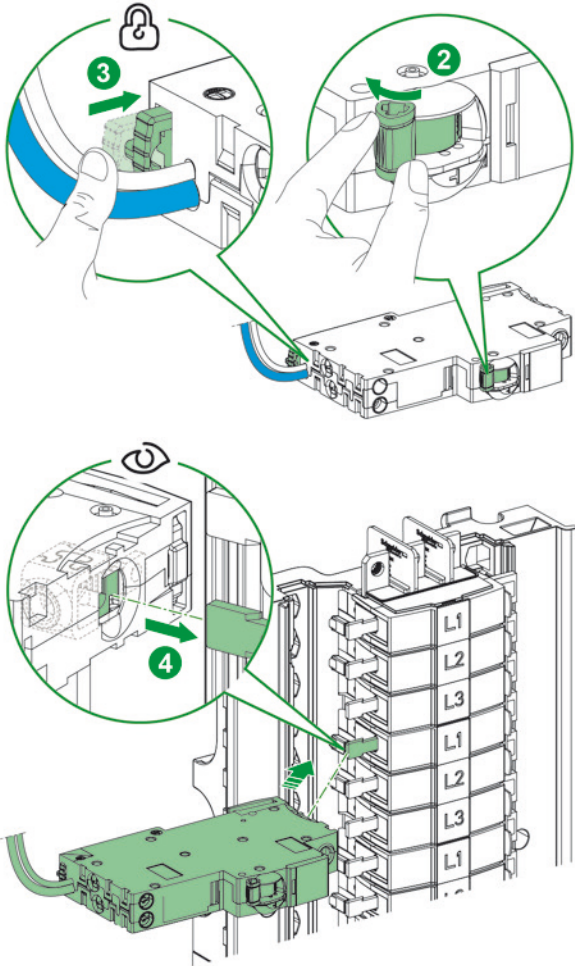
	DIMA (mm)	DIM B (mm)
A9HC24S160	380	710
A9HC36S160	380	818
A9HC48S160	380	926
A9HC54S160	380	980

# 1 Installing

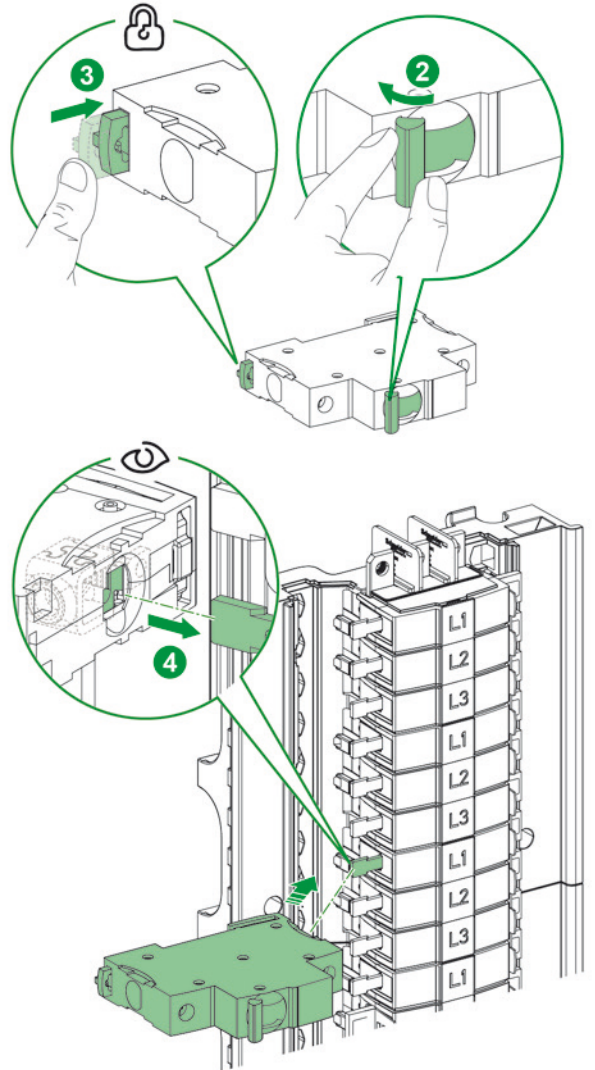
## 1.2 Install iC60H RCBO or MCB into MC



## 1.2 Install iC60H RCBO into MC

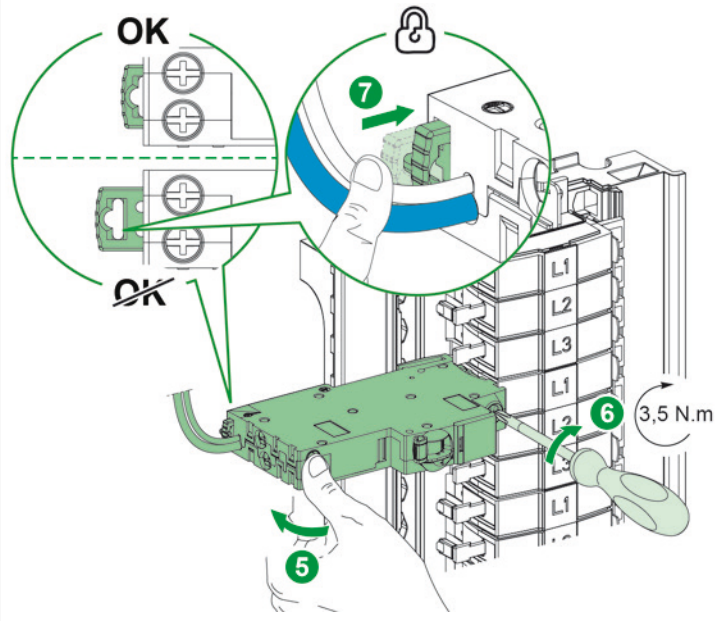


## 1.2 Install MCB into MC

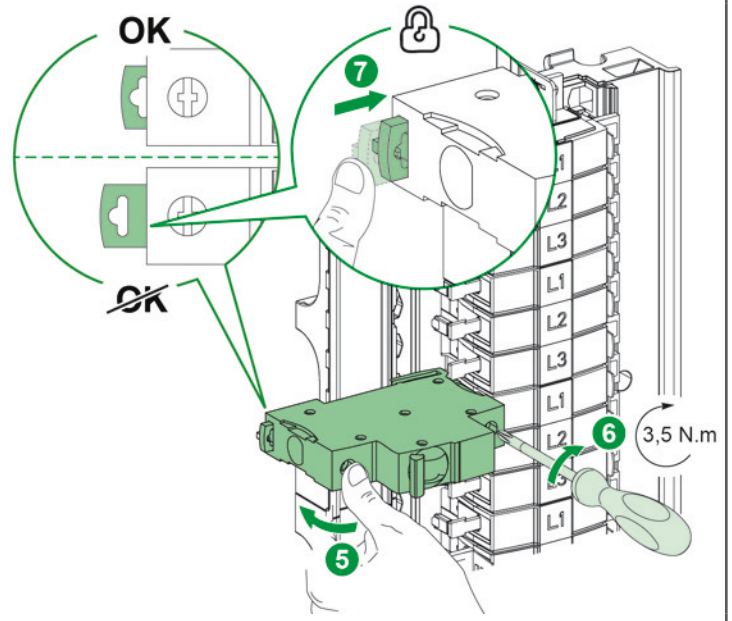


# 1 Installing

## 1.2 Install iC60H RCBO into MC

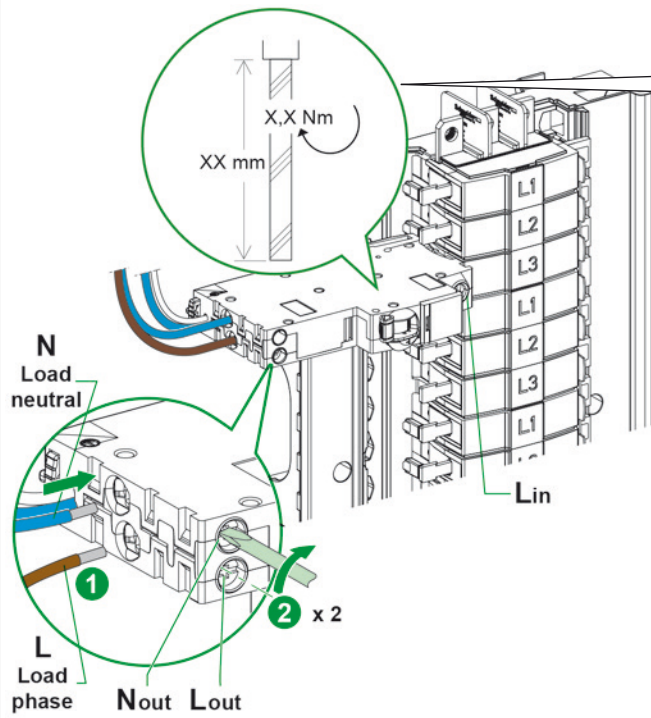


## 1.2 Install MCB into MC



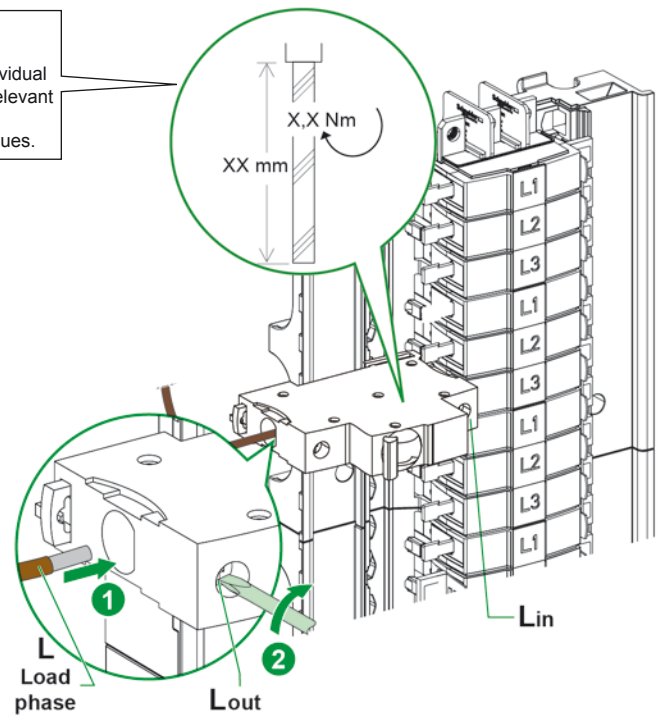
# 2 Connecting

## 2.1 Connect iC60H RCBO into MC



**i** Consult individual device for relevant torque and stripping values.

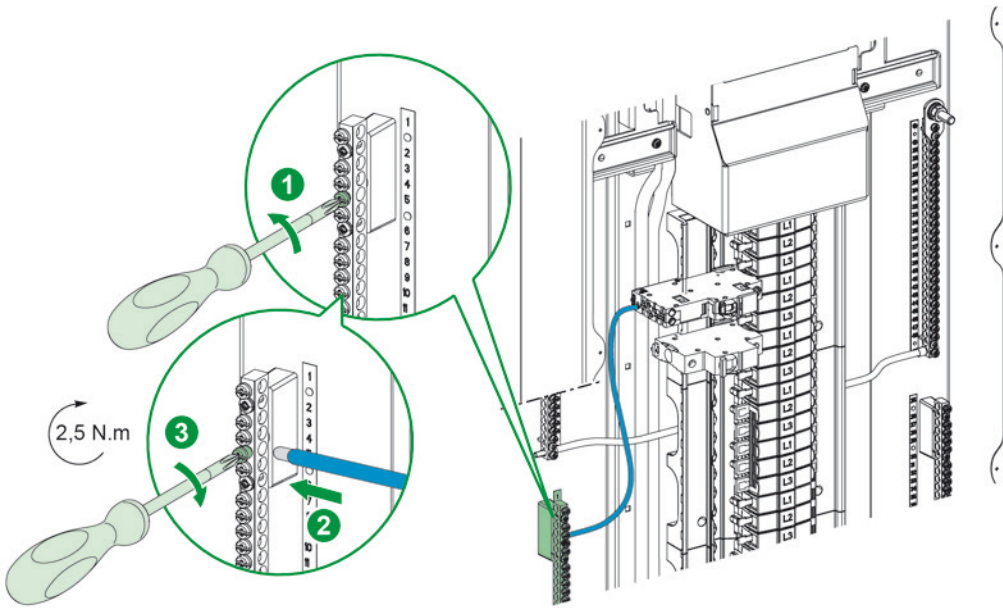
## 2.1 Connect MCB into MC





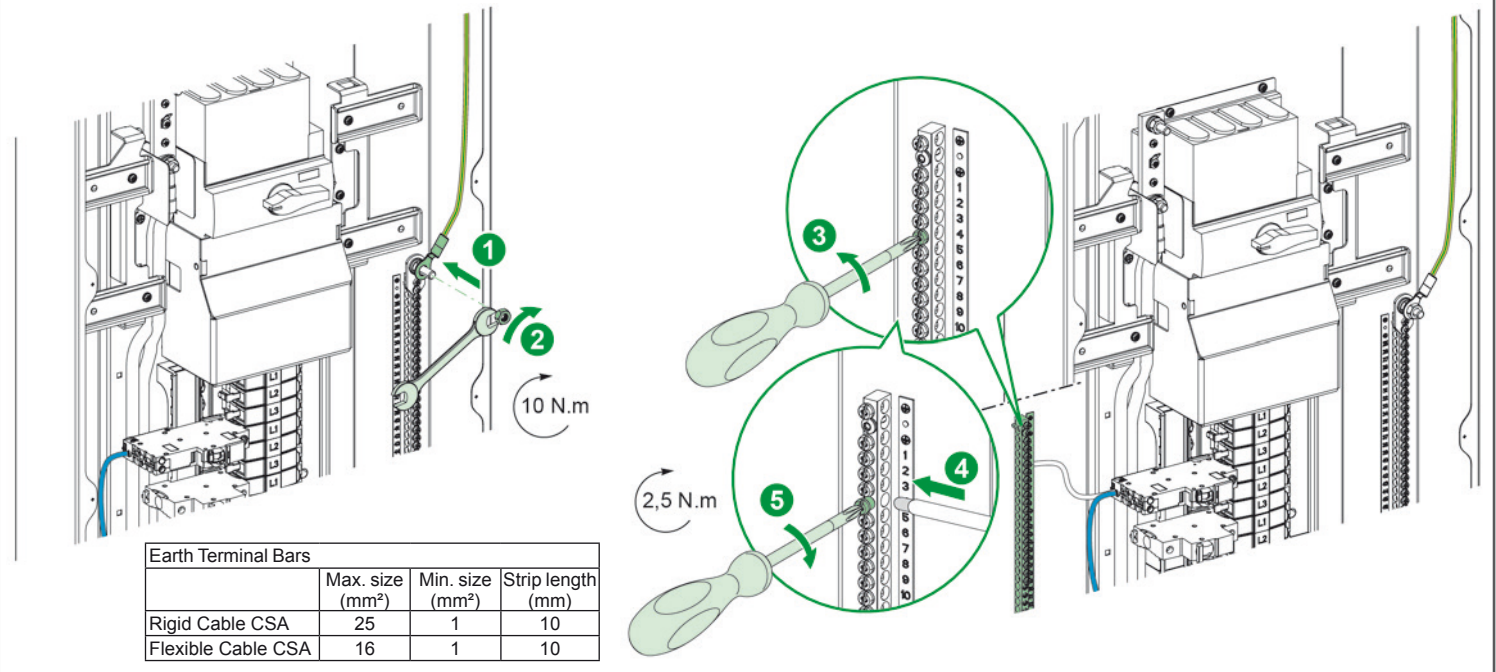
# 2 Connecting

## 2.2 Connect Neutral into MC



Neutral Terminal Bars			
	Max. size (mm <sup>2</sup> )	Min. size (mm <sup>2</sup> )	Strip length (mm)
Rigid Cable CSA	25	1	10
Flexible Cable CSA	16	1	10

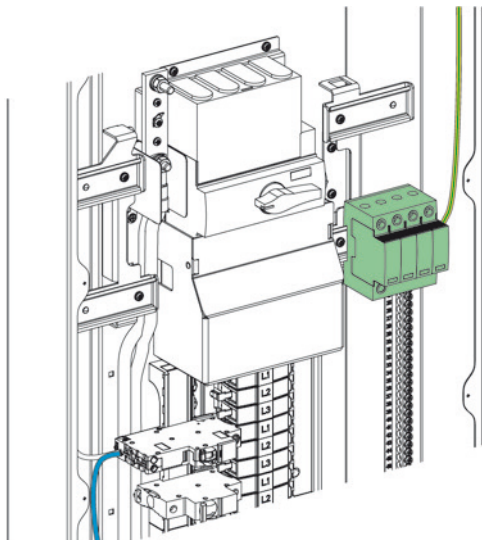
## 2.3 Connect Functional Earth into MC



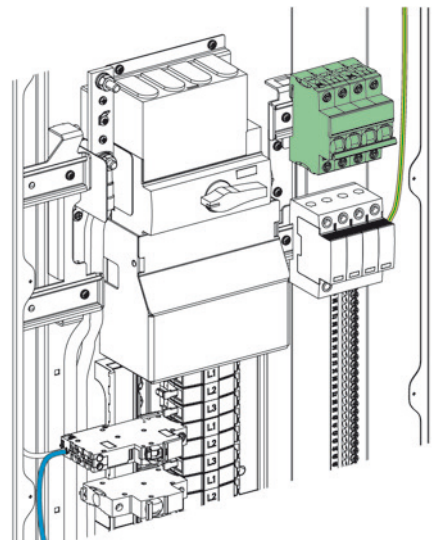
Earth Terminal Bars			
	Max. size (mm <sup>2</sup> )	Min. size (mm <sup>2</sup> )	Strip length (mm)
Rigid Cable CSA	25	1	10
Flexible Cable CSA	16	1	10

# 3 Installing

## 3.1 Install Surge Protection Device into MC

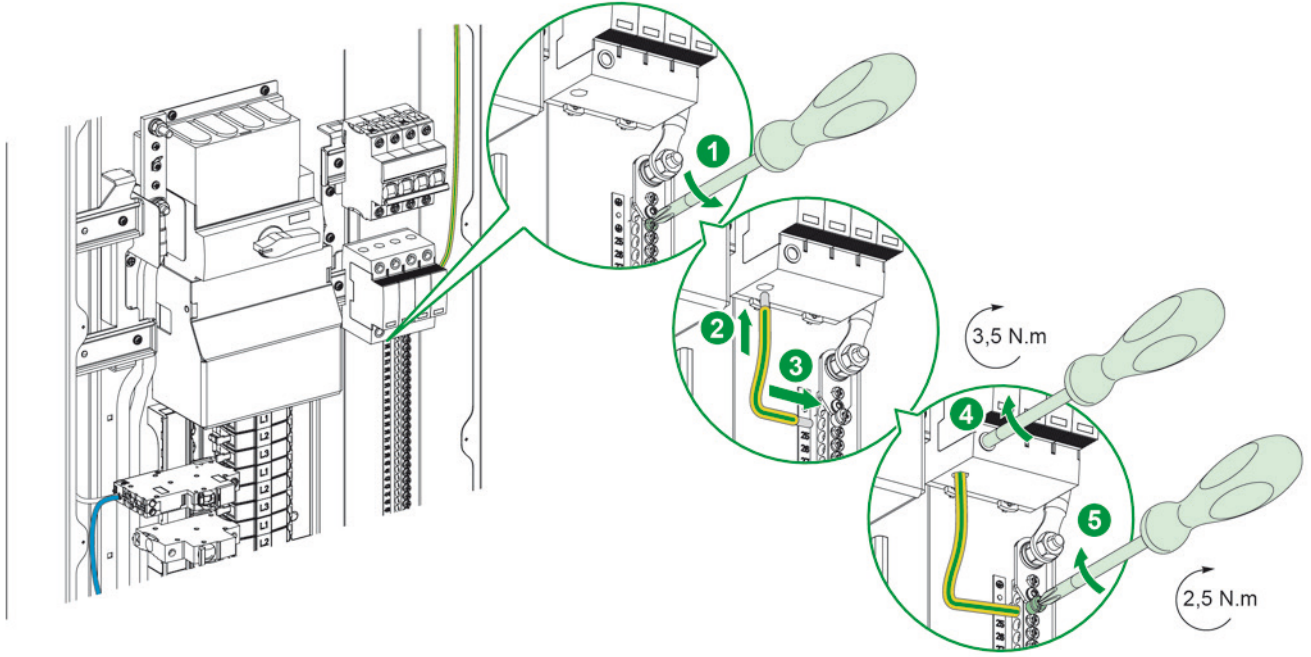


## 3.2 Install Surge Protection Device's iC60 Protective Device into MC



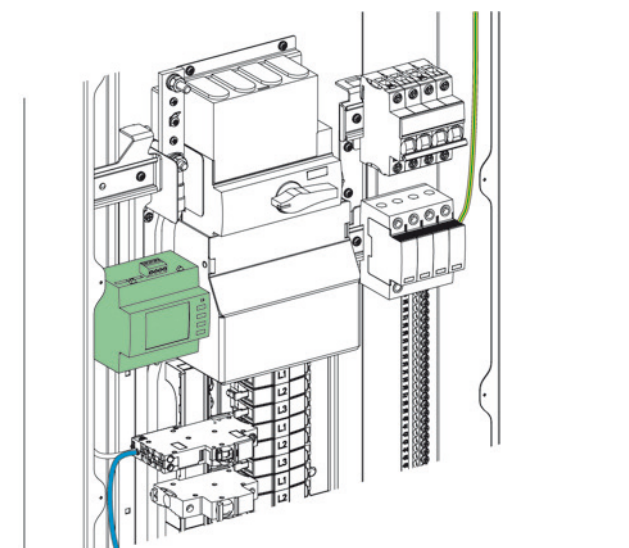
# 4 Connecting

## 4.1 Connect Surge Protective Device's Functional Earth into MC

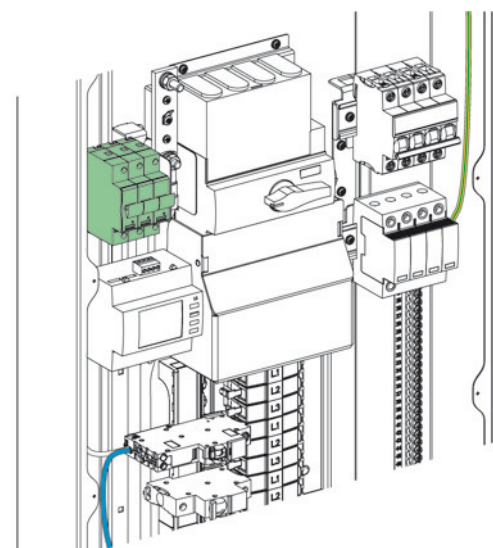


# 5 Installing

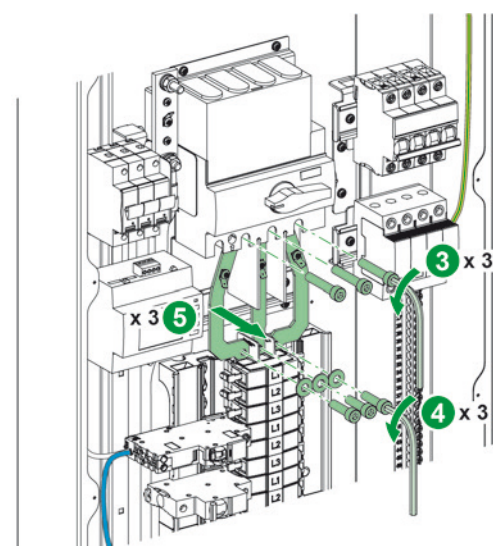
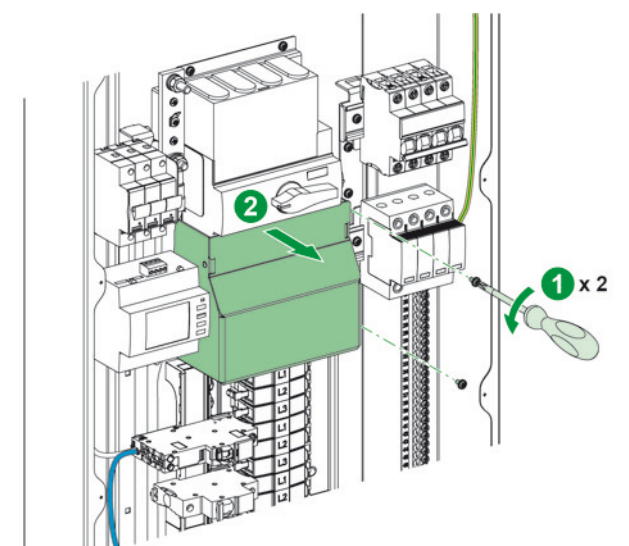
## 5.1 Install Powermeter into MC



## 5.2 Install Powermeter's STI Protective Device into MC

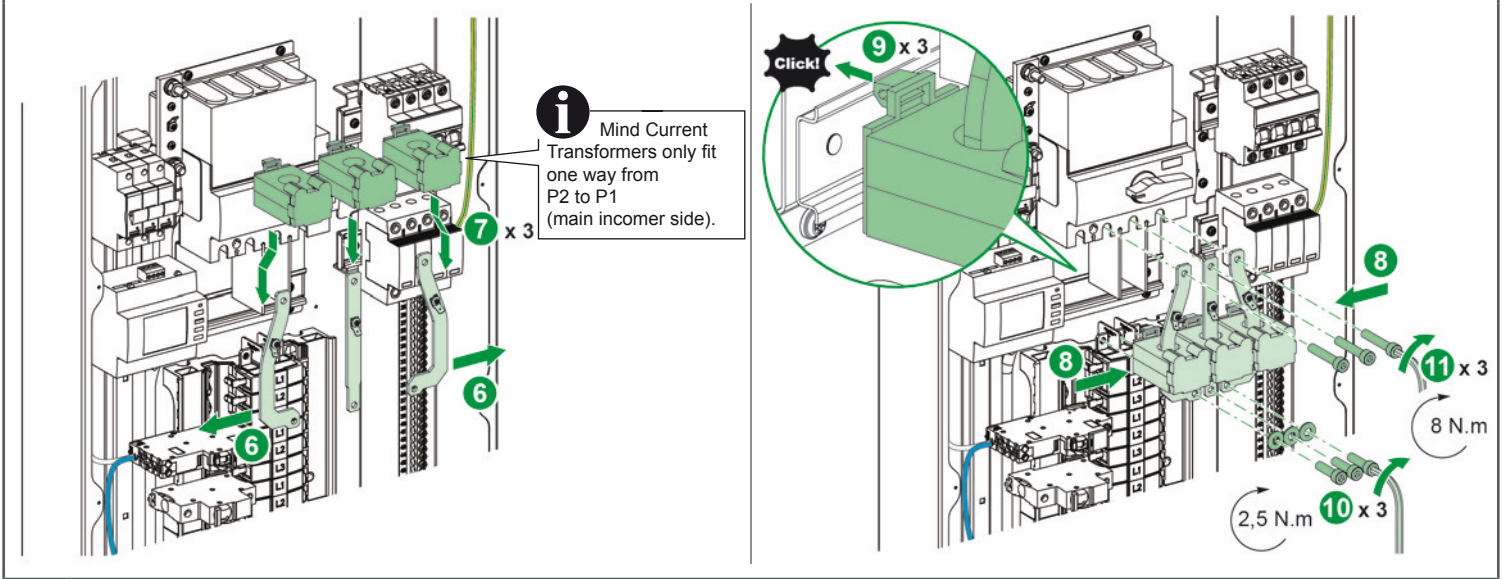


## 5.3 Install Current Transformers into MC



# 5 Installing

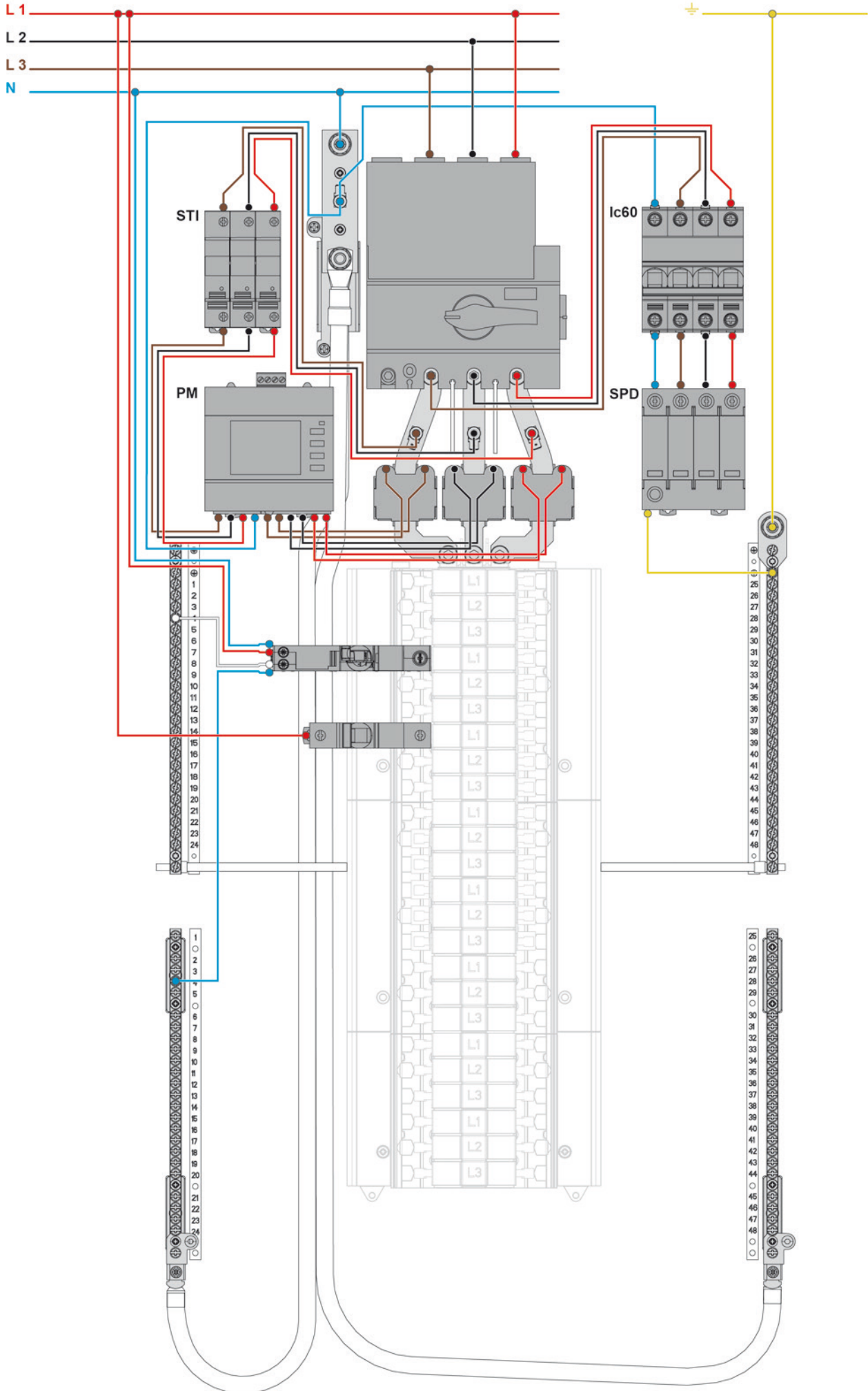
## 5.3 Install Current Transformers into MC





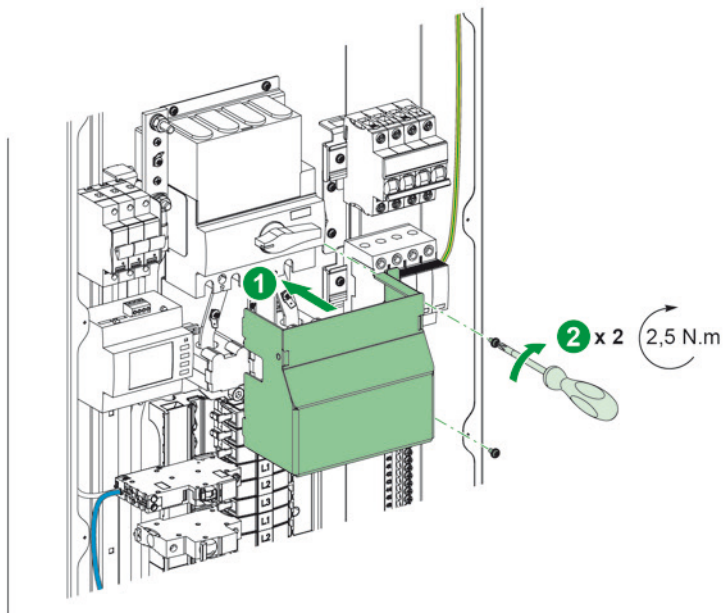
# 6

## Connecting



# 7 Installing

## 7.1 Install Shroud back into MC



## 7.2 Install Auxiliary Device into MC

