



Termination and Suspension Clamps

■ PA Series - Strain Clamps

Application

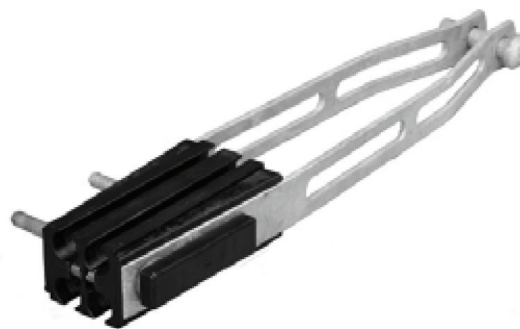
For termination of insulated overhead bundled cables. Broad cable range from 4 x 25 to 4 x 150. Spring loaded wedges for easier cable insertion.

Installation Note

Use fillers if only 2 or 3 cores are utilised.

Features

- Bolted full tension clamp
- Meets requirements of AS 3766
- Removable pin for easy installation
- Range taking



PA122A



PA10/1



PA2535

Product Number	Description	Cable Size & Configuration (mm ²)	Max Failing Load (kN)	Pack Size
PA2535	Strain clamp with aluminium arm - to suit 2 x 25, 4 x 35. For long span of service cable over dams, roads and other applications where additional holding capacity is required	2, 3 or 4 core XLPE insulated 25 to 35	11	1
PA10/1	Strain clamp with aluminium arm - to suit 4 x 25, 4 x 50 with humpback splitpin	2, 3 & 4 core XLPE insulated 25 to 50	35.75	6
PA10/1S	Strain clamp with aluminium arm - to suit 4 x 25, 4 x 50 with S/S hardware + humpback splitpin	2, 3 & 4 core XLPE insulated 25 to 50	35.75	6
PA11/1	Strain clamp with aluminium arm - to suit 4 x 50, 4 x 95 with humpback splitpin	2, 3 & 4 core XLPE insulated 50 to 95	44	6
PA11/1S	Strain clamp with aluminium arm - to suit 4 x 50, 4 x 95 with S/S hardware + humpback splitpin	2, 3 & 4 core XLPE insulated 50 to 95	44	6
PA11/1SR	Strain clamp with aluminium arm - to suit 4 x 50, 4 x 95 with S/S hardware bolts enter from opposing sides with SS "R" clip	2, 3 & 4 core XLPE insulated 50 to 95	44	6
PA11/1SRER	Strain clamp with aluminium arm - to suit 4 x 50, 4 x 95 with S/S hardware bolts enter from opposing sides with SS "R" clip	2, 3 or 4 core XLPE insulated 50 to 95	44	6
PA122A	Strain clamp with galvanised steel arm - to suit 4 x 95 to 150 sqmm with S/S hardware bolts	2, 3 or 4 core XLPE insulated 95 to 150	54	4