

Leonie Vario Flex

LED Floodlight



3D view



Small yet extremely powerful, Leonie Vario Flex lights up dark outdoor areas

- FLEX Feature (Lumen switch): Decide on your lumen package per lumen switch directly on site for two sizes (16 W and 40 W)
- VARIO Feature (Colour temperature switch): 3000 K (warm white), 4000 K or 5700 K (neutral white or daylight)
- Very light-weight, compact and streamline design
- Tilted universal mounting bracket allows easy surface mounting
- Compatible with the "LEONIE VARIO FLEX PLUG&PLAY MWS" presence sensor (available as accessory)



CCT switch
(3000 K, 4000 K
and 5700 K)



Lumen switch
(2 sizes with
switchable
lumen
packages)



50000 h lifetime
before luminous
flux is reduced
to 80% of the
initial value



IP65 splash
resistant
and IK08
rated impact
resistance



Optional
presence sensor

Ideal for ...



Building
facades



Car parks



Footpaths



Gardens

Installation/Mounting

- Suitable for wall or ceiling mounting
- Pre-wired with a 55 cm long mains cable and open cable ends
- Wall bracket available as accessory

Material/Finish

- Body: Aluminium, powder coated, RAL 7016 (anthracite grey)
- Bracket: Carbon steel, RAL 7016 (anthracite grey)
- Front cover: glass

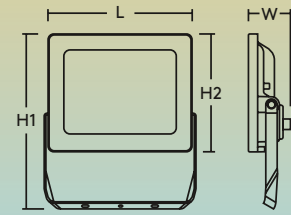
Light source information

- Flex @ 4000K:
16 W 1000lm 1500lm 2000lm
40 W 3300lm 4000lm 5000lm
- Vario: 3000 K, 4000 K & 5700 K
- Efficiency up to 143lm/W
- 50000 hours rated life (@L80, Ta 25 °C)
- MacAdam (initial): 5
Beam angle: 100±5°
- CRI 80



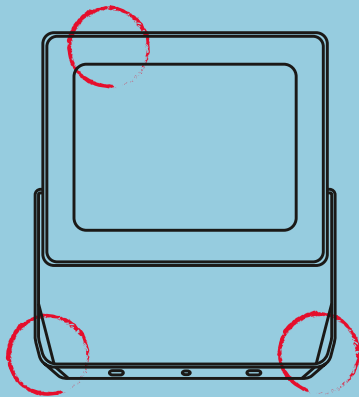
LEONIE VARIOFLEX IP65 16W 830/40/57
LEONIE VARIOFLEX IP65 40W 830/40/57

L	W	H1	H2
164	48	199	134
177	56	214	148

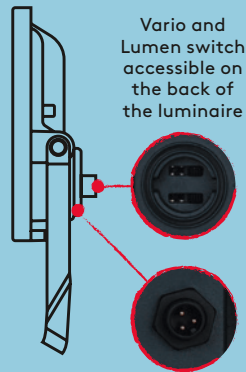


Facilitating life

RAL 7016 (anthracite grey)
for a better architectural
integration



Tilted Bracket
for easy
mounting



Vario and
Lumen switch
accessible on
the back of
the luminaire

Tilted Bracket
for easy
mounting

Ready to be
connected

Ordering guide

Description	SAP Code
LEONIE VARIOFLEX IP65 16W 830/40/57	96652074
LEONIE VARIOFLEX IP65 40W 830/40/57	96652075
Accessories	
LEONIE VARIOFLEX PLUG&PLAY MWS	96635648
LEONIE VARIOFLEX WALL BRACKET	96635746

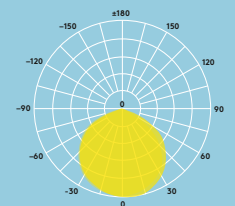
MWS: microwave presence sensor

Presence sensor

The optional sensor will ensure that light is only delivered when needed. The motion detection range and time duration is fully adjustable, with the additional benefit of a daylight sensor for illuminance levels between 2 and 50 lux.

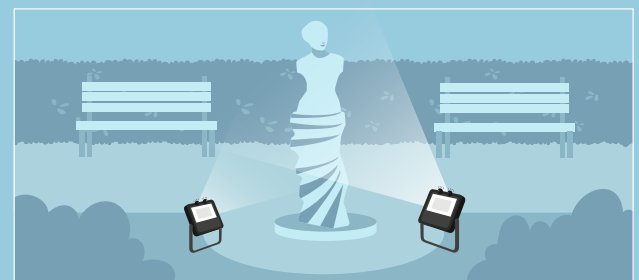
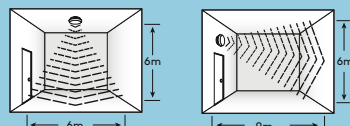


Portfolio overview



MWS Sensor range

at 100% sensitivity



Leonie Vario Flex
16 W

Leonie Vario Flex
40 W

Controllability (default) Specification

<ul style="list-style-type: none"> Sensitivity: 10%, 50%, 75%, 100% Time: 5s, 90s, 5min, 15min lux: 2lux, 10lux, 50lux, disable 	<ul style="list-style-type: none"> Class I electrical IP65 IK08 (IK07 for sensor) Ambient operating temperature: -30 to +40°C
--	---

